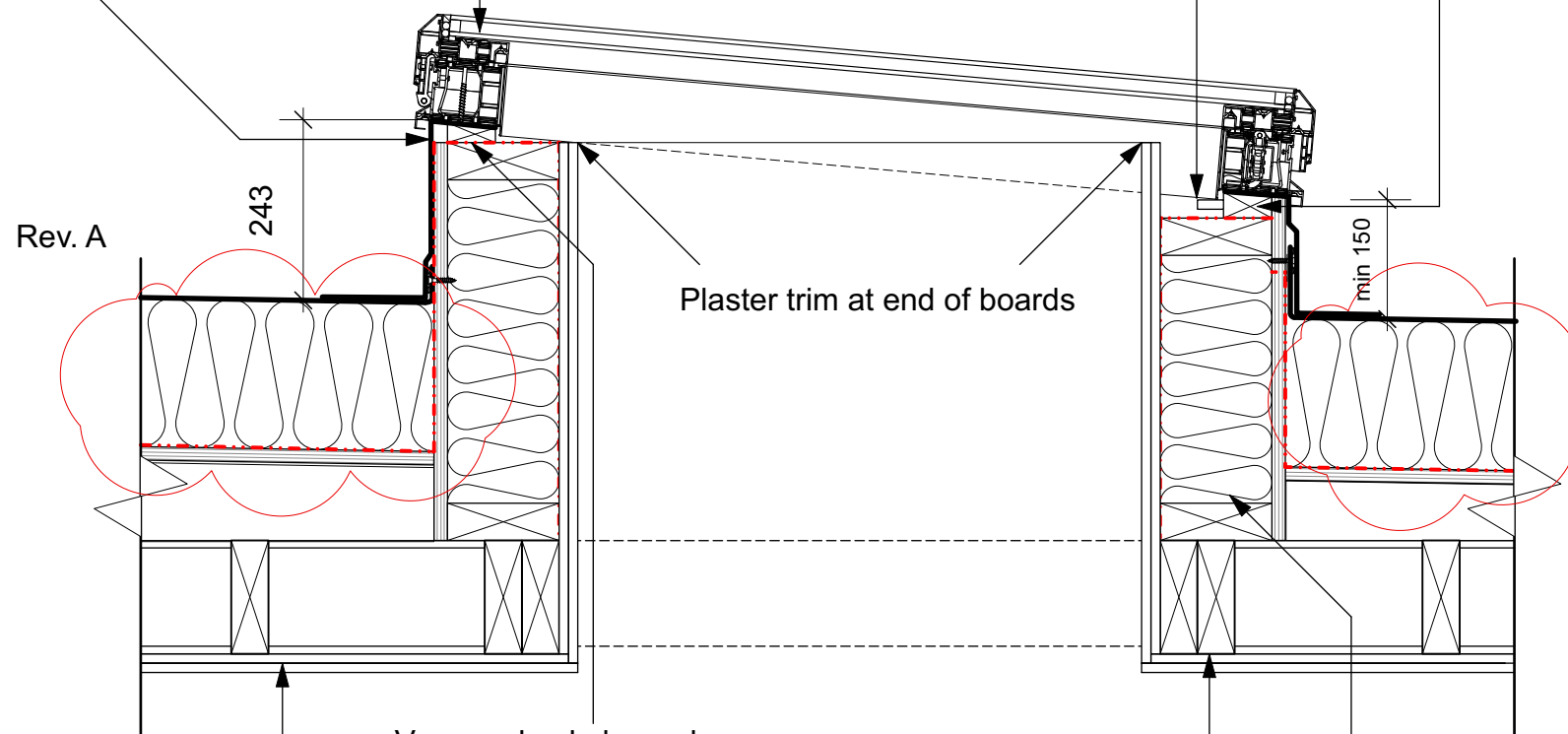


Soprema single ply membrane to lap over the top of the fixing batten, fitted to manufacturer's specification.

Sunsquare Aero Electric opening skylights, with solar control glazing as per spec.

18mm WBP ply flush to outer edge of fixing battens.

Chamfered 65x35-45mm tanalised timber fixing batten to accommodate rooflight fall.



Two layers of 12.5mm Gyproc Wallboard Duplex + taped joints & End stop beads at each end.

Vapour check, lapped up over top of parapet.

150x50mm tanalised timber upstand, full fill insulation to spec.

150x50mm tanalised double trimmers to support rooflight upstands to SE spec.

SCALE
0 100mm 200mm 500mm 1000mm

These particulars do not constitute, nor constitute any part of, an offer or a contract. All statements contained in these particulars as to this property are made without the responsibility on the part of Norton Ellis Architects Ltd. or the Vendors or Lessors. None of the statements contained in these particulars as to this property are to be relied on as statements or representations of fact. All measurements are approximate and no responsibility is taken for any error, omission, or mis-statement and any intending purchaser or tenants must satisfy themselves by inspection or otherwise as to the correctness of each of the statements contained in these particulars/ plans.
All dimensions to be checked on site and any discrepancy to be reported to the Architect prior to construction.
This drawing to be read in conjunction with all other drawings including those of other consultants.
Samples of all materials to be provided for comment/ approval prior to fabrication/construction © 2022 Norton Ellis Architects Ltd

Drawn by:
LC

Checked by:
RE

Revision:
Rev. A: 22/ 11/ 22 AI.01
Insulation updated

317-391

Rev: A
Date: 18.11.16
Scale: 1:10 @ A3

PURPOSE OF ISSUE
Preliminary
Planning
Tender
Construction

Typical rooflight detail
61-63 Rochester Place,
London NW1 9JU

norton ellis architects
Greenside House
50 Station Road
London N22 7DE
Tel: 07375 636 560
www.nortonellis.co.uk

nea