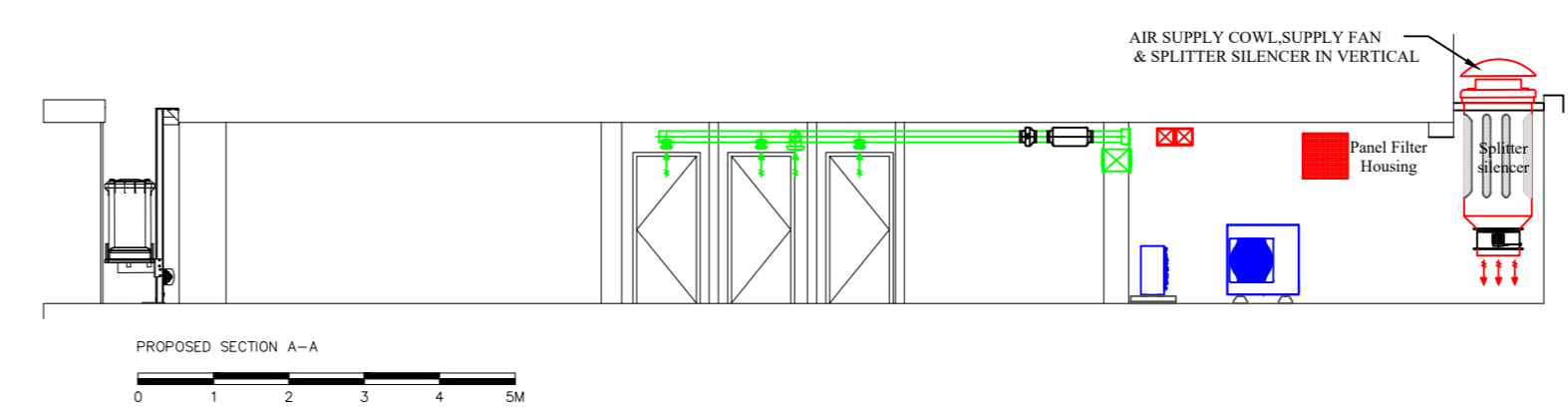
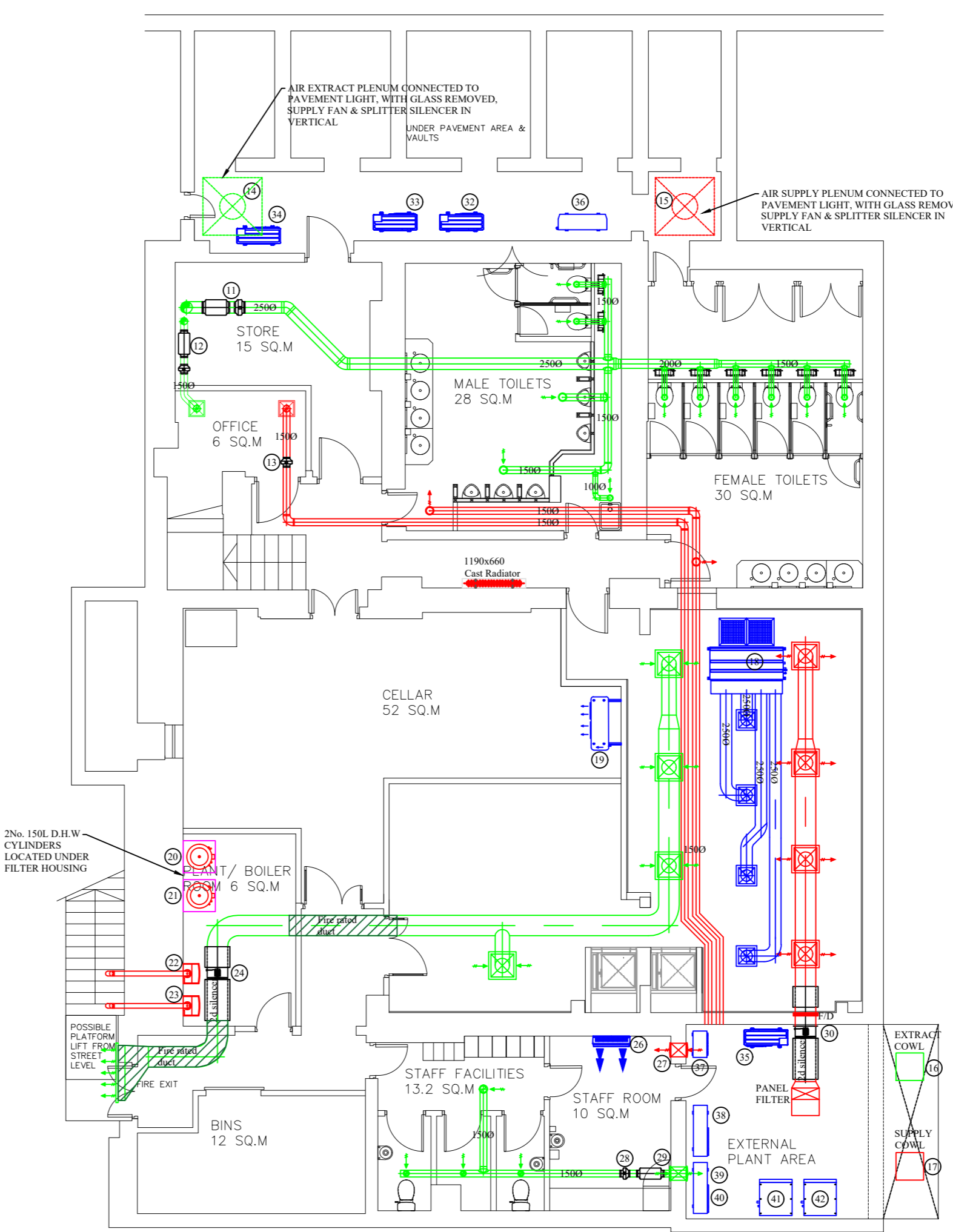
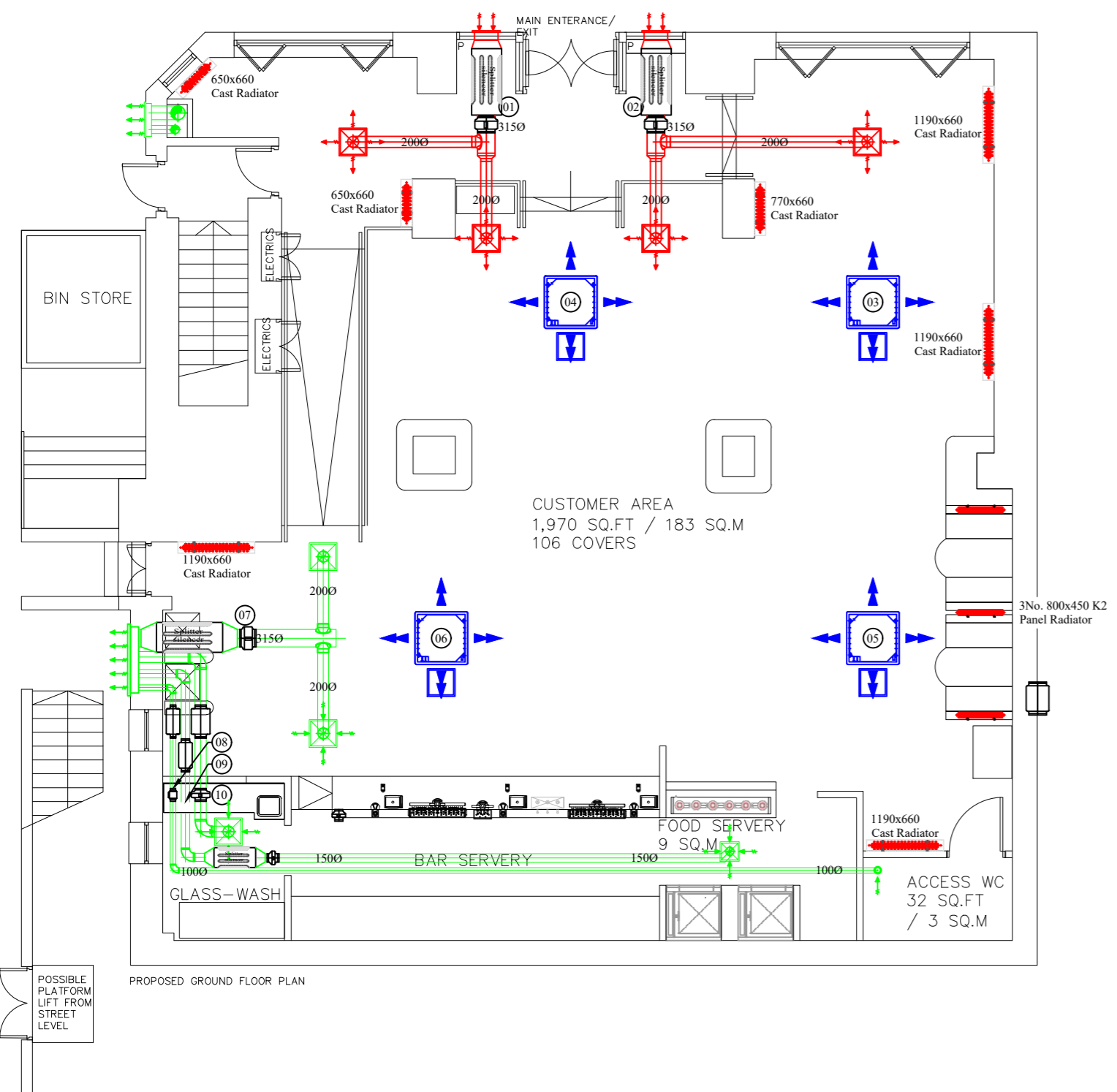


#REF	System	Manufacturer	Model	Electrical supply	Phase	Fuse Rating (amp)	No. of Power Cable Cores	Input Power (Watt)	FLC (amp)	Start Current (amp)	Sound Pressure level dB(A)	Weight (Kg)	No. Interconnecting Cable Cores	CONTROLLER POSITION	COMMENTS	
01	TRADE AREA SUPPLY AIR FAN	ELTA SELECT	HIT315	220 - 240v, 50Hz	Single	-	5	-	1.02	3.6	58@3m	8.8	3	GLASS WASH	POWER TO CONTROLLER	
02	TRADE AREA SUPPLY AIR FAN	ELTA SELECT	HIT315	220 - 240v, 50Hz	Single	-	5	-	1.02	3.6	58@3m	8.8	3	GLASS WASH	POWER TO CONTROLLER	
03	TRADE AREA CASSETTE UNIT (AC1a) MASTER	DAIKIN ELECTRIC	PLA-M71EA	220 - 240v, 50Hz	Single	-	-	-	-	-	40@3m	29	3+E (1.5mm)	G/F GLASS WASH	POWER VIA OUTDOOR	
04	TRADE AREA CASSETTE UNIT (AC1a) SLAVE	DAIKIN ELECTRIC	PLA-M71EA	220 - 240v, 50Hz	Single	-	-	-	-	-	40@3m	29	3+E (1.5mm)	G/F GLASS WASH	POWER VIA MASTER UNIT	
05	TRADE AREA CASSETTE UNIT (AC2a) MASTER	DAIKIN ELECTRIC	PLA-M71EA	220 - 240v, 50Hz	Single	-	-	-	-	-	40@3m	29	3+E (1.5mm)	G/F GLASS WASH	POWER VIA OUTDOOR	
06	TRADE AREA CASSETTE UNIT (AC2a) SLAVE	DAIKIN ELECTRIC	PLA-M71EA	220 - 240v, 50Hz	Single	-	-	-	-	-	40@3m	29	3+E (1.5mm)	G/F GLASS WASH	POWER VIA MASTER UNIT	
07	TRADE AREA EXTRACT AIR FAN	ELTA SELECT	HIT315	220 - 240v, 50Hz	Single	-	5	-	1.02	3.6	58@3m	8.8	3	GLASS WASH	POWER TO CONTROLLER	
08	DISABLED WC EXTRACT AIR FAN	ENVIROVENT	SILENT MV160/100T	220 - 240v, 50Hz	Single	-	3	25	16	-	24@3m	-	-	ON VIA LIGHTS	POWER TO FAN	
09	FOOD HOIST / PICKUP EXTRACT AIR FAN	ELTA SELECT	HIT150	220 - 240v, 50Hz	Single	-	3	-	28	-	47	3.6	-	ON VIA LIGHTS	POWER TO FAN	
10	GLASS WASH EXTRACT AIR FAN	ELTA SELECT	HIT200	220 - 240v, 50Hz	Single	-	3	84	-	-	53	5.5	3	STAFF ROOM	POWER TO CONTROLLER	
11	MALE / FEMALE WC EXTRACT FAN	ELTA SELECT	HIT250	220 - 240v, 50Hz	Single	-	3	71	-	-	53	5.5	-	VIA THE LIGHTS	POWER TO FAN	
12	OFFICE EXTRACT AIR FAN	ELTA SELECT	HIT150	220 - 240v, 50Hz	Single	-	3	-	28	-	47	3.6	3	OFFICE	POWER TO CONTROLLER	
13	OFFICE SUPPLY AIR FAN	ELTA SELECT	HIT150	220 - 240v, 50Hz	Single	-	3	-	28	-	47	3.6	3	OFFICE	POWER TO CONTROLLER	
14	UNDERCROFT EXTRACT FAN	SYSTEMAIR	AR500 DV	380 - 415v, 50Hz	3ph	-	-	700	1,700	67@1m	18,600	3	N/A	THERMOSTAT TO FAN	-	
15	UNDERCROFT EXTRACT FAN	SYSTEMAIR	AR500 DV	380 - 415v, 50Hz	3ph	-	-	700	1,700	67@1m	18,600	3	N/A	THERMOSTAT TO FAN	-	
16	UNDERCROFT EXTRACT FAN	SYSTEMAIR	AR500 DV	380 - 415v, 50Hz	3ph	-	-	700	1,700	67@1m	18,600	3	N/A	THERMOSTAT TO FAN	-	
17	UNDERCROFT EXTRACT FAN	SYSTEMAIR	AR500 DV	380 - 415v, 50Hz	3ph	-	-	700	1,700	67@1m	18,600	3	N/A	THERMOSTAT TO FAN	-	
18	KITCHEN DUCTED AC	MITSUBISHI ELECTRIC	PEAD-M140JA	220 - 240v, 50Hz	Single	-	-	-	-	-	43@3m	44	3+E (1.5mm)	KITCHEN	POWER VIA OUTDOOR	
19	CELLAR COOLING UNIT	J&E HALL	JCC2 80E	220 - 240v, 50Hz	Single	-	10	3	1.9	-	50@10m	63	3	BUILT IN	POWER TO UNIT	
20	D.H.W CYLINDER	ALBION	ULTRASTEEL ALU150	2 x 220 - 240v, 50Hz	Single	-	2 x 3	2 x 3000	-	-	-	360	-	-	N/A	POWER TO UNIT
21	D.H.W CYLINDER	ALBION	ULTRASTEEL ALU150	2 x 220 - 240v, 50Hz	Single	-	2 x 3	2 x 3000	-	-	-	360	-	-	N/A	POWER TO UNIT
22	PUB HEATING BOILER 1	WORCESTER BOSCH	LIFE 8000 35kw System	220 - 240v, 50Hz	Single	-	5	3	-	-	-	-	-	-	-	-
23	PUB HEATING BOILER 2	WORCESTER BOSCH	LIFE 8000 35kw System	220 - 240v, 50Hz	Single	-	5	3	-	-	-	-	-	-	-	-
24	KITCHEN EXTRACT FAN	SYSTEMAIR	AR450E4	220 - 240v, 50Hz	Single	-	-	600	2,900	-	66@1m	17	-	KITCHEN	POWER TO CONTROLLER	
25	OMIT															
26	STAFF ROOM WALL MOUNT AC UNIT	MITSUBISHI ELECTRIC	MSZ-HR35VF	220 - 240v, 50Hz	Single	-	-	-	-	-	46@3m	8.5	3+E (1.5mm)	STAFF ROOM	POWER VIA OUTDOOR	
27	STAFF ROOM SUPPLY WALL FAN	VENT AXIA	TX7WL	220 - 240v, 50Hz	Single	-	3	40w	24	-	39@3m	6.13	4+E	STAFF ROOM	POWER TO CONTROLLER	
28	STAFF EG / CHANGING ROOM EXTRACT	ELTA SELECT	HIT150	220 - 240v, 50Hz	Single	-	3	-	28	-	47	3.6	-	ON VIA LIGHTS	POWER TO FAN	
29	STAFF ROOM EXTRACT WALL FAN	VENT AXIA	TX7WL	220 - 240v, 50Hz	Single	-	3	40w	24	-	39@3m	6.13	4+E	STAFF ROOM	POWER TO CONTROLLER	
30	KITCHEN SUPPLY FAN	SYSTEMAIR	AR450E4	220 - 240v, 50Hz	Single	-	4	600	2,900	13.5	66@1m	17	-	KITCHEN	POWER TO CONTROLLER	
31	OMIT															
32	KITCHEN DUCTED AC CONDENSER	MITSUBISHI ELECTRIC	PUZ-M140YAR1	380 - 415v, 50Hz	3ph	-	16	5	4,150w	11.5	5	57@1m	85	-	N/A	POWER TO UNIT
33	CONDENSER - G/F CASSETTE AC	MITSUBISHI ELECTRIC	PUZ-M140YAR1	380 - 415v, 50Hz	3ph	-	16	5	4,150w	11.5	5	57@1m	85	-	N/A	POWER TO UNIT
34	CONDENSER - G/F CASSETTE AC	MITSUBISHI ELECTRIC	PUZ-M140YAR1	380 - 415v, 50Hz	3ph	-	16	5	4,150w	11.5	5	57@1m	85	-	N/A	POWER TO UNIT
35	STAFF ROOM AC CONDENSER	MITSUBISHI ELECTRIC	MUZ-HR35VF	220 - 240v, 50Hz	Single	-	10	3	960w	6.4	5.9	51@1m	24	-	N/A	POWER TO UNIT
36	CELLAR COOLING CONDENSER	J&E HALL	BSCU-30-M3	380 - 415v, 50Hz	3ph	-	20	5	-	-	9	36@10m	77	-	N/A	POWER TO UNIT
37	BRITVIC HEAT DUMP	BY OTHERS														
38	GLYCOL CONDENSER	BY OTHERS														
39	GLYCOL CONDENSER	BY OTHERS														
40	WALK IN FRIDGE CONDENSER	BY OTHERS														
41	WALK IN FREEZER CONDENSER	BY OTHERS														



Rev	Date	Description
A	07/11/22	Splitter silencers shown as per acoustic report

Client: **JD WETHERSPOON**


Job Title: **SOPHISTICATS EUSTON**

Dwg Title: **OPTION 2 NON FRIED KITCHEN MECHANICAL LAYOUT PLAN**

Date: 28-10-22 Drawn By: CJA

Scale: 1:100@A2 Checked By: OA

Dwg No: 7618-01 Rev: A



Abbey Plumbing Ltd
3 Whitehills Drive
Whitehills Business Park
Blackpool, FY4 5LW
Tel: 01253 698 159
Email: admin@aplmechanical.co.uk