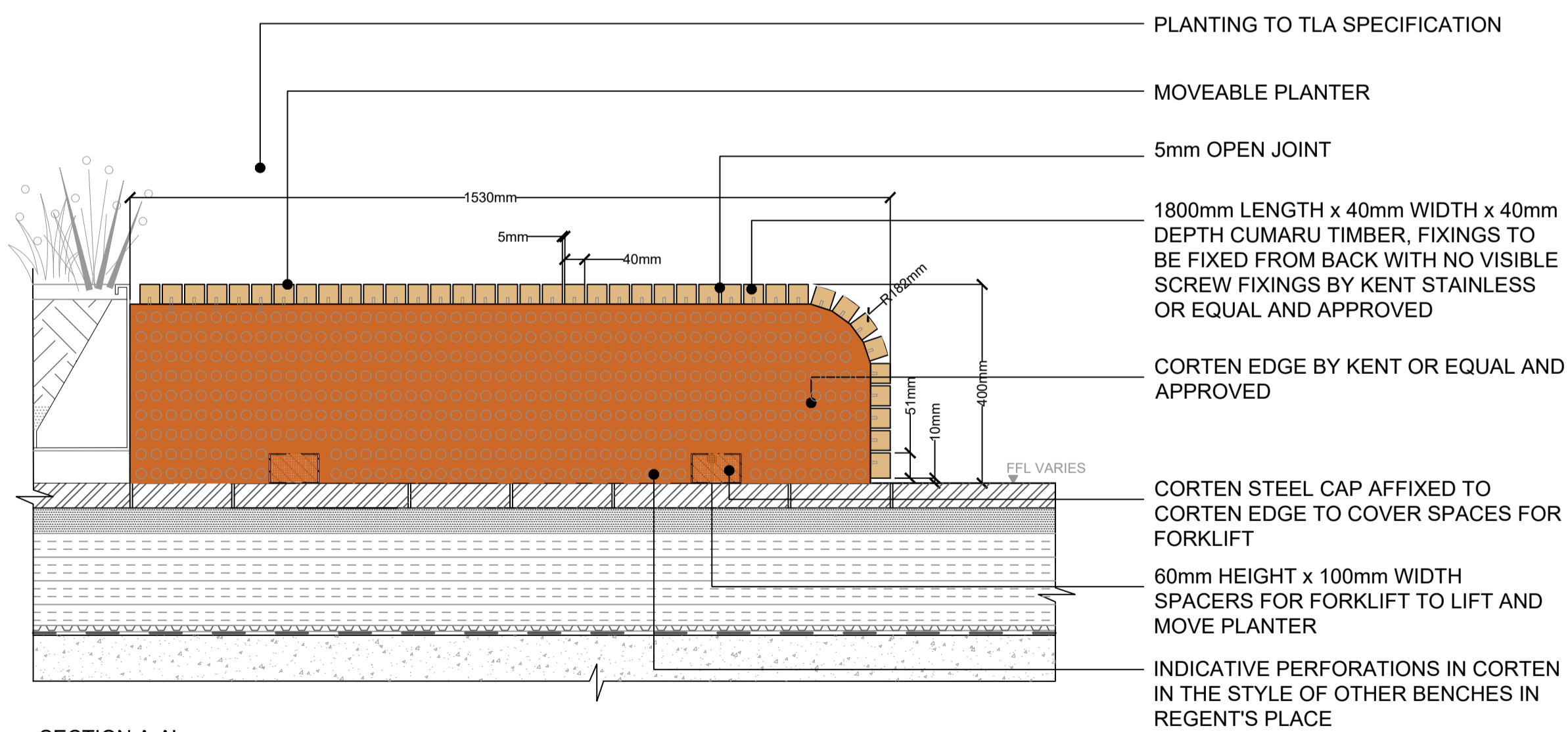
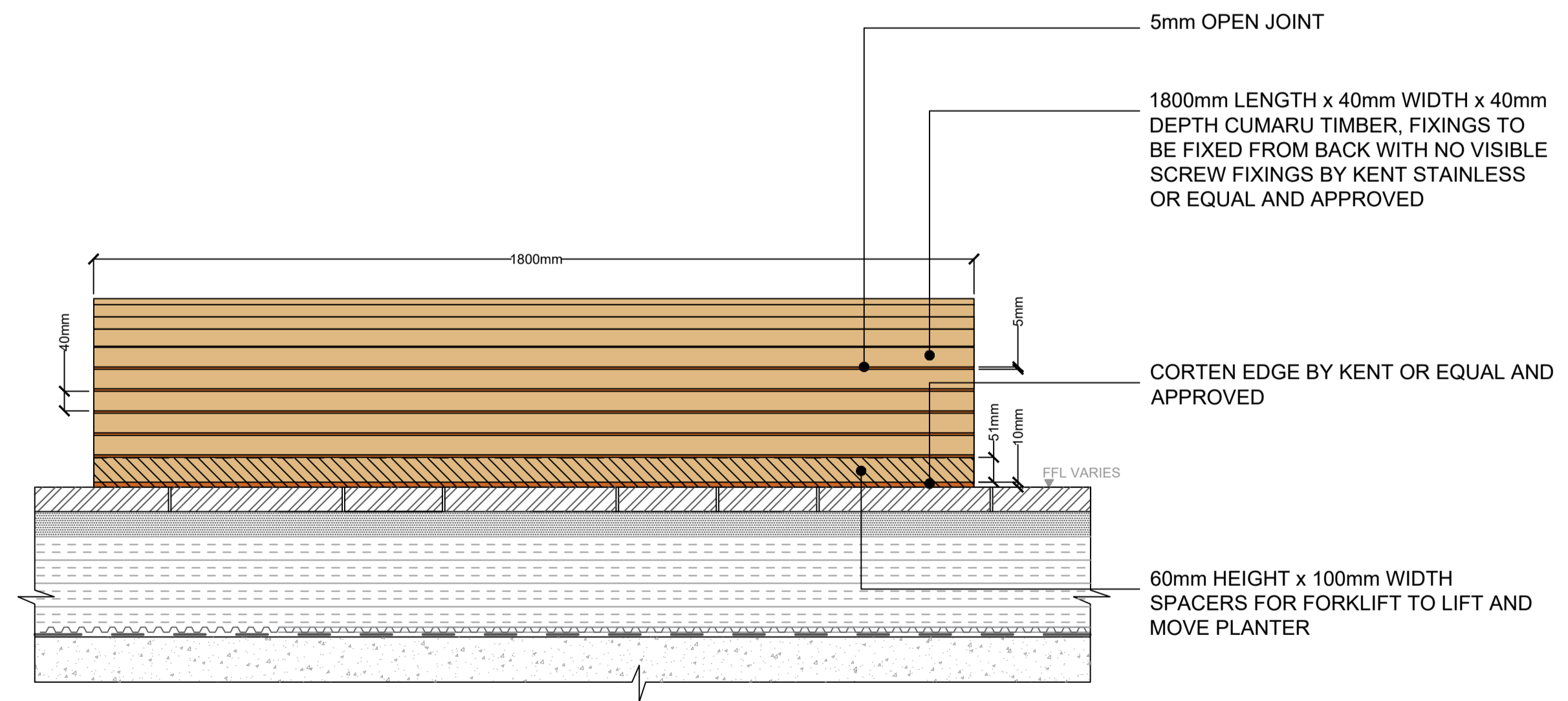


DETAIL 3.33
TYPICAL BENCH TYPE 16 DETAIL
SCALE 1:10



SECTION A-A'
TYPICAL BENCH TYPE 16 DETAIL
SCALE 1:10



SECTION B-B'
TYPICAL BENCH TYPE 16 DETAIL
SCALE 1:10

CONTRACTOR TO SUBMIT SHOP DRAWING PROPOSALS.
CONTRACTOR TO PROVIDE INFORMATION FOR MOVEABLE FURNITURE AND PLANTERS, NOTING HOW THEY ARE TO BE MOVED AND INFORMATION REGARDING THEIR WEIGHT.

TENDER ISSUE

GENERAL NOTES

- DO NOT SCALE DRAWING.
- ALL SETTING OUT, LEVELS AND DIMENSIONS TO BE AGREED ON SITE.
- THE DIMENSIONS OF ALL MATERIALS MUST BE CHECKED ON SITE BEFORE BEING LAID OUT.
- THIS DRAWING MUST BE READ WITH THE RELEVANT SPECIFICATION CLAUSES AND DETAIL DRAWINGS.
- ORDER OF CONSTRUCTION AND SETTING OUT TO BE AGREED ON SITE.

HEALTH AND SAFETY INFORMATION

REFER TO HEALTH AND SAFETY FILE.

| Rev | Description | Date |
|-----|-------------|----------|
| 00 | First Issue | 27.09.22 |
| | | |
| | | |
| | | |
| | | |
| | | |
| | | |

CLIENT
British Land
45 Seymour Street, London W1H 7LX
Telephone: 020 7486 4466 Fax: 020 7935 5552
E-Mail: info@britishland.com

CONSULTANT
TOWNSHEND
LANDSCAPE ARCHITECTS
Northumberland House 303-306 High Holborn | London WC1V 7JZ
E-mail: tia@townshendla.com
Telephone: 020 7729 9333

PROJECT
REGENTS PLACE - PHASE 2

PROJECT NUMBER
667.01

DATE
SEP 2022

TITLE
Detail 3.33 Bench Type 16 Typical Details

SCALE (@ A1)
1:10

DRAWN BY
BB

CHECKED BY
DP

DRAWING NUMBER
TOWN667.01(03)6333

REV
00

STAGE 3 ISSUE