



## Plant Specification

### Shrubs

Number	Species	Density	Pot Size
5	Hebe 'Carl Teschner'	Counted	10L
4	Pittosporum tenuifolium 'Golf Ball'	Counted	10L
6	Rosmarinus officinalis 'Prostratus'	Counted	5-7.5L
6	Sarcococca hookeriana 'Winter Gem'	Counted	5-7.5L
8	Vinca minor 'Bowles' Variety'	Counted	3L

Herbaceous

Number	Species	Density	Pot Size
27	<i>Gaura lindheimeri</i>	Counted	3L
6	<i>Geranium cinereum</i> 'Ballerina'	Counted	3L
6	<i>Geranium macrorrhizum</i> 'Bevan's Variety'	Counted	3L
6	<i>Hylotelephium</i> 'Matrona'	Counted	3L
6	<i>Penstemon</i> 'Sour Grapes'	Counted	3L
8	<i>Verbena</i> 'Lollipop'	Counted	3L

### Climbers

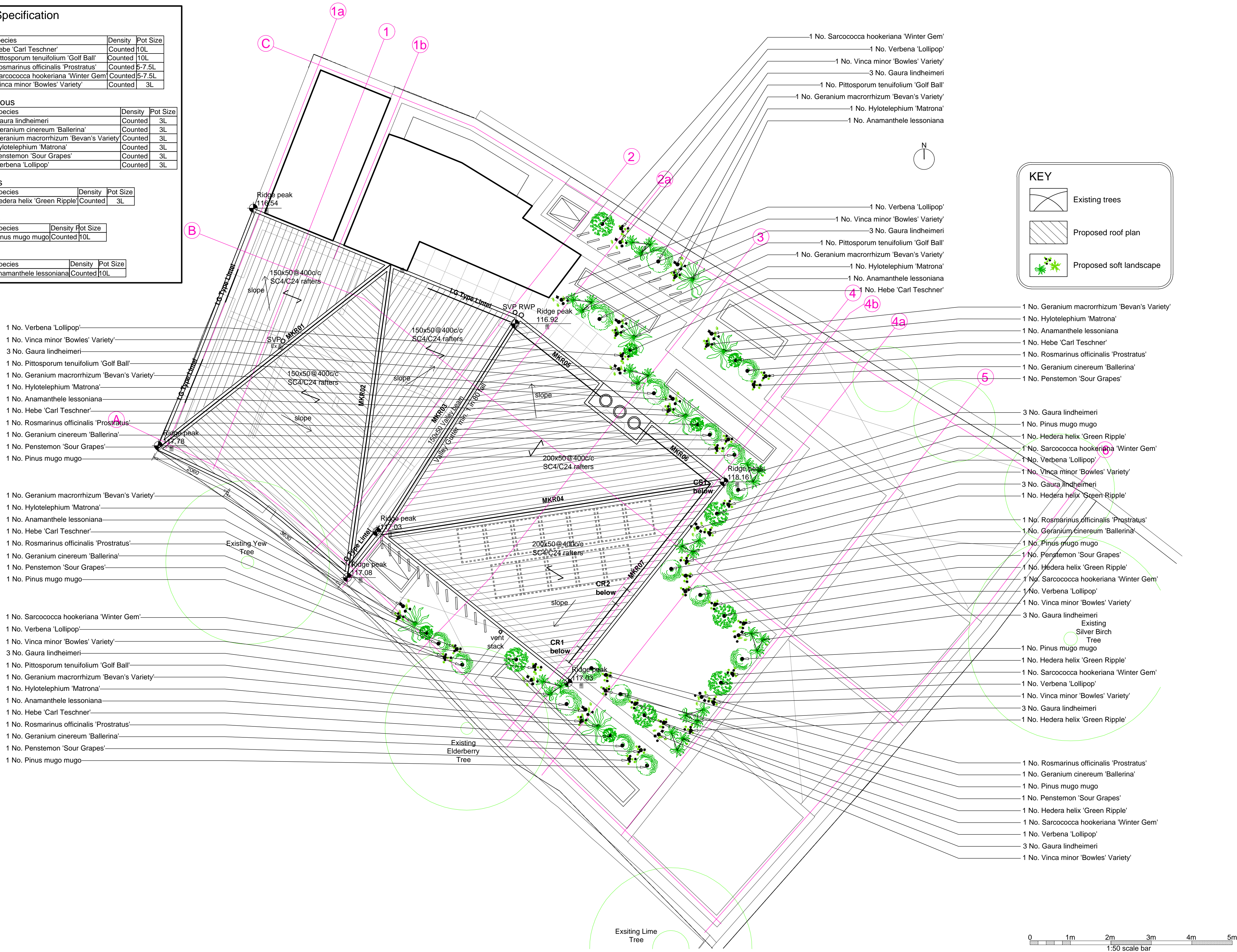
Number	Species	Density	Pot Size
6	<i>Hedera helix</i> 'Green Ripple'	Counted	3L

## Conifers

Number	Species	Density	Pot Size
7	<i>Pinus mugo mugo</i>	Counted	10L

## Grasses

Number	Species	Density	Pot Size
6	Anamanthele lessoniana	Counted	10L



## NOTES

## Design Rationale

The landscaping for the proposed building has been designed in line with the National Planning Policy Framework 2018 Part and policies of The Core Strategy 2011: SP11 Open spaces and wildlife; SP12 Design and conservation; SP13 High environmental standards, and Saved Policies of The Southwark Plan 2007: Policy 3.2 Protection of amenity; Policy 3.12 Quality in Design; Policy 3.13 Urban Design and Policy 3.28 Biodiversity, in particular ensuring that the design is sympathetic to the borough's suburban character, incorporating shrubs, trees and perennials. The landscaping style is integral to the overall design of the property. The shrubs and plants for the proposed planters have been selected to cope with the north facing and roof aspects and aim to soften the building, increase biodiversity and create amenity value.

The community garden aims to provide a green refuge in a shady garden with wildflowers instead of grass, native plants, mixed native hedging and a rowan. The inclusion of plants from the RHS list of good pollinators will ensure a net gain in bio-diversity in line with Policy 3.28 Biodiversity'...will encourage the inclusion in developments of features which enhance biodiversity...' and SP12 Open spaces and Wildlife. Planters for growing of vegetables have been proposed (in line with Policy SP12 'we are looking at ways to encourage local food growing...' one built at a height to allow inclusion of the disabled. The path proposed is in compacted Breodon to ensure accessibility and space allowed at the end of the bench for design' in line with Policy 3.12 Quality in design'...including the specific needs of disabled people or mobility impaired'. The single species 'hedging' in the form of a very narrow native ivy hedge and the hornbeam hedge reference the suburban location and contribute to the street scene, the former enabling generous seating in a narrow setting, thus maximising the amenity of an awkward narrow shaped space in line with policy 3.12 'design specific to the site's shape, size and location...' and Policy 3.12: Urban Design 'landscape design that enhances the the area and biodiversity.' The garden provides a safe enclosed outdoor space for residents and children to enjoy whilst also providing new habitats to increase bio-diversity in line with Policy SP12.

Additional green infrastructure in the form of the planted roof, the frontage and the incorporation of climbers, proposed trees, shrubs, grasses and perennials from the RHS list of good pollinators included in the proposals for the roof garden planters, aims to comply with Policy 3.12 Urban Design 'that enhances the area and biodiversity.' It also provides a green corridor linking the community garden with the proposed building to the street in line with Policy SP11 'to improve and strategically enhance the overall greenness of places, including promoting green corridors, gardens and local food growing'. The planting style aims to complement the proposed building and also the character of Streatham Place in line with Strategic Policy 12 Design and Conservation.

Rev.	Amendments	Date	Chkd.
------	------------	------	-------

Client  
STREATLEY PLACE (HAMPSTEAD) LIMITED



Project

6 Streatley Place,  
London NW3 1HP

Title

Soft Landscape Plan - Roof Plan

Drawn	ND	Date	Aug'22	Scale 1:50
Checked	MN	Date	Aug'22	
Approved	SS	Date	Aug'22	Size A1

Drawing No.	Rev.
20101-1326-F01	-