

DO NOT SCALE FROM THIS DRAWING.

THE CONTRACTOR SHALL CHECK AND VERIFY ALL DIMENSIONS ON SITE AND REPORT ANY DISCREPANCIES TO FORME BEFORE PROCEEDING WITH THE WORKS.

THIS DRAWING IS COPYRIGHT PROTECTED AND MUST NOT BE REPRODUCED WITHOUT THE PRIOR WRITTEN AGREEMENT OF FORME UK.

Aluminium interlocking perforated panels* hung from secondary fixing through 8mm Cembrit Cladding Board, into Nvelope Aluminium Support System, with 20mm cavity and 50mm Rockwool Rainscreen Duo Slab Insulation, Nova FR Breather Membrane, on 13mm Cement-bonded Particle Sheathing Board "Y-Wall" fixed to Light Gauge Galvanised Steel Structural Framing System - Double SFS Studs to All Openings - Full Fill Rockwool RWA45 Insulation between Studs.

*Vertical 20mm Perforated Aluminium Panels (hatch shown is not true pattern, shown indicatively). Allow for 10mm square holes at 20mm centres, assumed 67% Hollowness. Specialist Sub-Contractor to provide proposals.

Finished RAL 9007 Metallic

Terrace Face:

Aluminium interlocking perforated panels* hung from secondary fixing through 8mm Ceramapanel Cladding Board, into Nvelope Aluminium Support System, with 20mm cavity, on 13mm Cement-bonded Particle Sheathing Board "Y-Wall" fixed to Light Gauge Galvanised Steel Structural Framing System - Double SFS Studs to All Openings - Full Fill Rockwool RWA45 Insulation between Studs. Polyethylene/Polythene Low Density 0.15mm Vapour Control Layer - Nova 1200G, and 2no. layers of Standard Wallboard Plasterboard with 3mm Gypsum Plastering coat.

Plant Face:

13mm Cement-bonded Particle Sheathing Board "Y-Wall" fixed to Light Gauge Galvanised Steel Structural Framing System.

8mm Ceramapanel Cladding Board fixed with Nvelope Aluminium Support System, with 20mm cavity and 70mm Rockwool Rainscreen Duo Slab Insulation, Nova FR Breather Membrane, on 13mm Cement-bonded Particle Sheathing Board "Y-Wall" fixed to Light Gauge Galvanised Steel Structural Framing System - Double SFS Studs to All Openings - Full Fill Rockwool RWA45 Insulation between Studs. Polyethylene/Polythene Low Density 0.15mm Vapour Control Layer - Nova 1200G, and 2no. layers of Standard Wallboard Plasterboard with 3mm Gypsum Plastering coat.

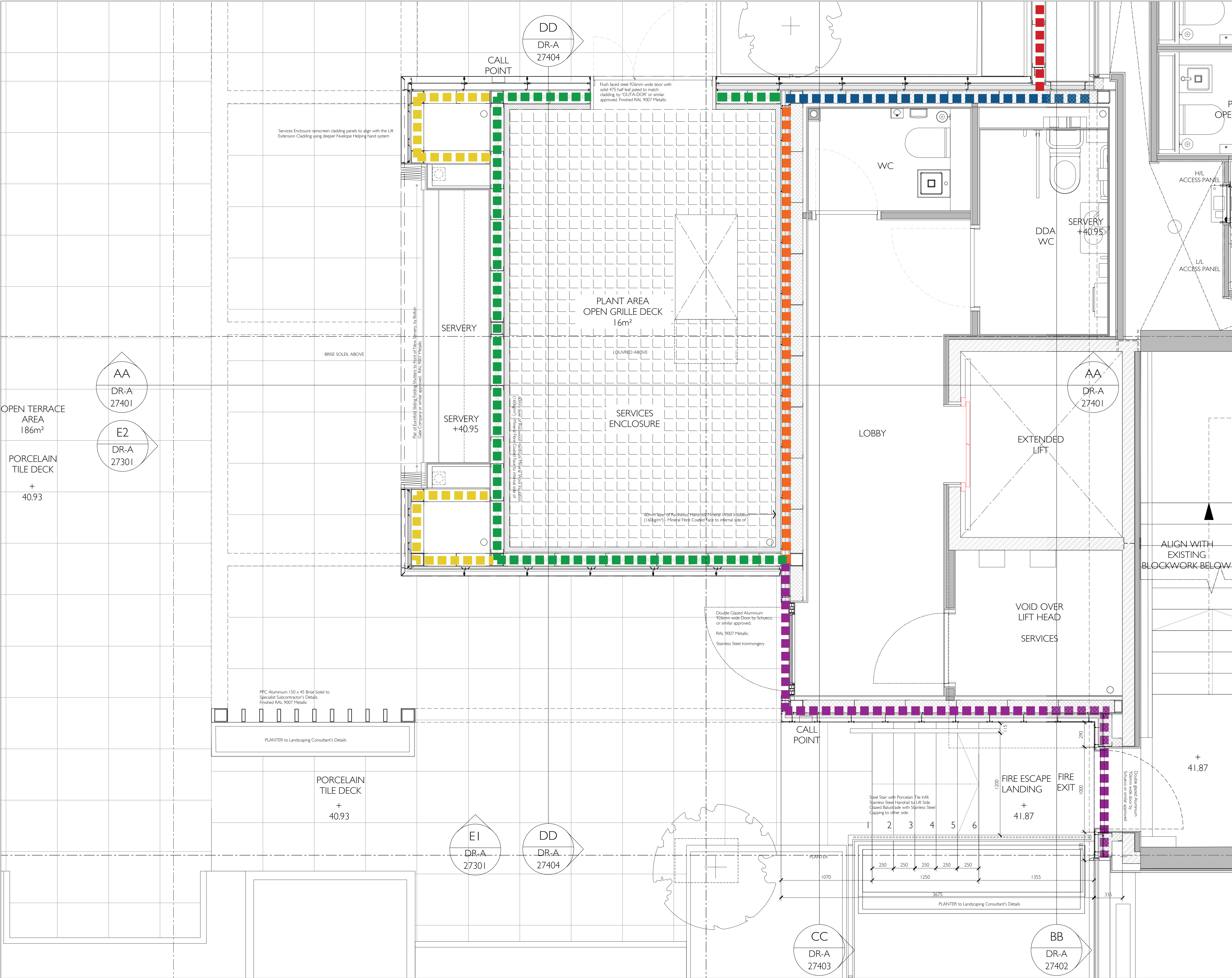
8mm Ceramapanel cement fibre board, fixed with Nvelope Aluminium Support System, with 20mm cavity and 50mm Rockwool Rainscreen Duo Slab Insulation, Nova FR Breather Membrane, on 13mm Cement-bonded Particle Sheathing Board "Y-Wall" fixed to Light Gauge Galvanised Steel Structural Framing System - Double SFS Studs to All Openings - Full Fill Rockwool RWA45 Insulation between Studs. Polyethylene/Polythene Low Density 0.15mm Vapour Control Layer - Nova 1200G, and 2no. layers of Standard Wallboard Plasterboard with 3mm Gypsum Plastering coat.

8mm Ceramapanel cement fibre board with 8mm joints, fixed with Steel Profiles and EPTLEPDM on reverse side of Cembrit Board, with 20mm cavity, on 13mm Cement-bonded Particle Sheathing Board "Y-Wall" fixed to both sides of Light Gauge Galvanised Steel Structural Framing System.

Aluminium perforated panel hung from secondary fixing through 8mm Cembrit Cladding Board, into Nvelope Aluminium Support System, with 20mm cavity, fixed with Steel Profiles and EPTLEPDM on reverse side of Cembrit Board, on 13mm Cement-bonded Particle Sheathing Board "Y-Wall" fixed to both sides of Light Gauge Galvanised Steel Structural Framing System.

*External Walls must meet the performance criteria given in BRE Report BR 135 using full-scale test data from BS 8414-1 or BS 8414-2

PL01	Planning	10/10/2022
REV.	REVISION DESCRIPTION	DATE
PROJECT		
The Met Building		
22-24 Percy Street		
London W1T 2BS		
DRAWING TITLE		
Podium West - Podium Terrace		
General Arrangement		
SCALE @A1	REV	
1:50	PL01	
DATE	ORIGINATOR	
05/05/2022	SPL	
CHECKED BY	APPROVED	
RCJ	MT	
STATUS		
Planning		
DRAWING NUMBER		
PS5006-FME-ZZ-P2-DR-A-27014		
FORME UK		
NUTMEG HOUSE 60 GAINSFORD STREET		
BUTLERS WHARF LONDON SE1 2NY		
T +44 (0)20 7378 1340		
WWW.FORME.UK.COM		
COMPANY NUMBER 9879724		



NOTES

DO NOT SCALE FROM THIS DRAWING.

THE CONTRACTOR SHALL CHECK AND VERIFY ALL DIMENSIONS ON SITE AND REPORT ANY DISCREPANCIES TO FORME BEFORE PROCEEDING WITH THE WORKS.

THIS DRAWING IS COPYRIGHT PROTECTED AND MUST NOT BE REPRODUCED WITHOUT THE PRIOR WRITTEN AGREEMENT FORME UK.

Aluminium interlocking perforated panels* hung from secondary fixing through 8mm Cerampanel Cladding Board, into Nvelope Aluminium Support System, with 20mm cavity and 50mm Rockwool Rainscreen Duo Slab Insulation, Nova FR Breather Membrane, on 13mm Cement-bonded Particle Sheathing Board "Y-Wall" fixed to Light Gauge Galvanised Steel Structural Framing System - Double SFS Studs to All Openings - Full Fill Rockwool RWA45 Insulation between Studs.

*Vertical 2.0mm Perforated Aluminium Panels (hatch shown is not true pattern, shown indicatively). Allow for 10mm square holes at 20mm centres, assumed 67% Hollowness. Specialist Sub-Contractor to provide proposals.

Finished RAL 9007 Metallic

Terrace Face:

Aluminium interlocking perforated panels* hung from secondary fixing through 8mm Cerampanel Cladding Board, into Nvelope Aluminium Support System, with 20mm cavity, on 13mm Cement-bonded Particle Sheathing Board "Y-Wall" fixed to Light Gauge Galvanised Steel Structural Framing System - Double SFS Studs to All Openings - Full Fill Rockwool RWA45 Insulation between Studs.

Plant Face:

13mm Cement-bonded Particle Sheathing Board "Y-Wall" fixed to Light Gauge Galvanised Steel Structural Framing System.

8mm Cerampanel Cladding Board fixed with Nvelope Aluminium Support System, with 20mm cavity and 70mm Rockwool Rainscreen Duo Slab Insulation, Nova FR Breather Membrane, on 13mm Cement-bonded Particle Sheathing Board "Y-Wall" fixed to Light Gauge Galvanised Steel Structural Framing System - Double SFS Studs to All Openings - Full Fill Rockwool RWA45 Insulation between Studs. Polyethylene/Polythene Low Density 0.15mm Vapour Control Layer - Nova 1200G, and 2no. layers of Standard Wallboard Plasterboard with 3mm Gypsum Plastering coat.

8mm Cerampanel cement fibre board, fixed with Nvelope Aluminium Support System, with 20mm cavity and 50mm Rockwool Rainscreen Duo Slab Insulation, Nova FR Breather Membrane, on 13mm Cement-bonded Particle Sheathing Board "Y-Wall" fixed to Light Gauge Galvanised Steel Structural Framing System - Double SFS Studs to All Openings - Full Fill Rockwool RWA45 Insulation between Studs. Polyethylene/Polythene Low Density 0.15mm Vapour Control Layer - Nova 1200G, and 2no. layers of Standard Wallboard Plasterboard with 3mm Gypsum Plastering coat.

8mm Cerampanel cement fibre board with 8mm joints, fixed with Steel Profiles and EPTU/EPDM on reverse side of Board, with 20mm cavity, on 13mm Cement-bonded Particle Sheathing Board "Y-Wall" fixed to both sides of Light Gauge Galvanised Steel Structural Framing System.

Aluminium perforated panel hung from secondary fixing through 8mm Cerampanel Cladding Board, into Nvelope Aluminium Support System, with 20mm cavity, fixed with Steel Profiles and EPTU/EPDM on reverse side of Cerampanel Board, on 13mm Cement-bonded Particle Sheathing Board "Y-Wall" fixed to both sides of Light Gauge Galvanised Steel Structural Framing System.

***External Walls must meet the performance criteria given in BRE Report BR 135 using full-scale test data from BS 8414-1 or BS 8414-2**

PL04	Amendments to suit planning comments	10.10.2022
PL03	Amendments to suit planning comments	11.03.2022
PL02	Amendments to suit planning comments	21.02.2022
PL01	General Amendments	21.10.2021
REV.	REVISION DESCRIPTION	DATE

PROJECT

The Met Building

22-24 Percy Street

London W1T 2BS

DRAWING TITLE

Podium West Lift Extension

External Wall Plan Type

SCALE @A1

1:20

REV

PL04

DATE

24/09/2021

ORIGINATOR

DHM

CHECKED BY

RCJ

APPROVED

MT

STATUS

Planning

DRAWING NUMBER

PS5006-FME-ZZ-P2-DR-A-2701 I

FORME UK

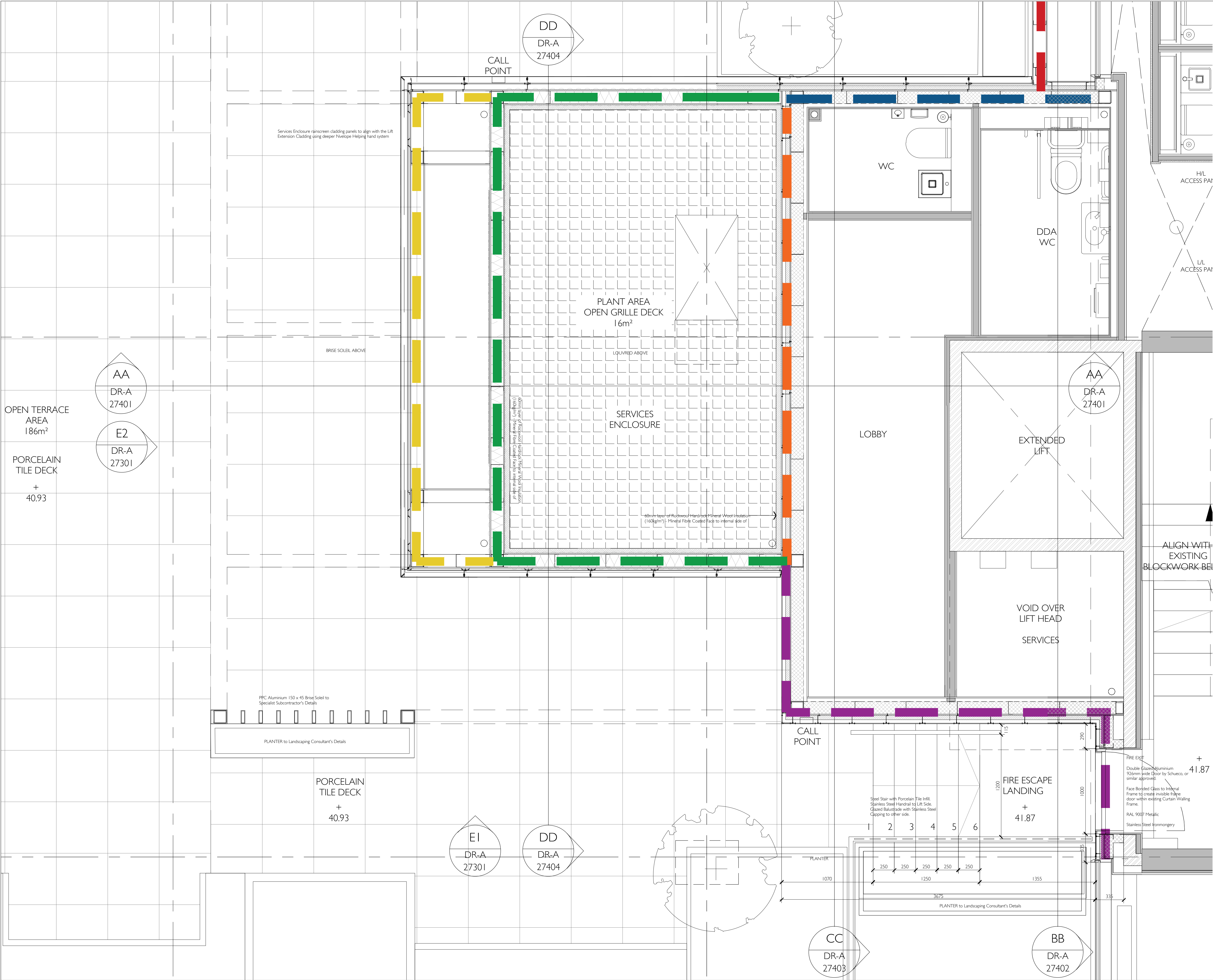
NUTMEG HOUSE 60 GAINSFORD STREET

BUTLERS WHARF LONDON SE1 2NY

T +44 (0)20 7378 1340

WWW.FORME.UK.COM

COMPANY NUMBER 9879724



NOTES

DO NOT SCALE FROM THIS DRAWING.

THE CONTRACTOR SHALL CHECK AND VERIFY ALL DIMENSIONS ON SITE AND REPORT ANY DISCREPANCIES TO FORME BEFORE PROCEEDING WITH THE WORKS.

THIS DRAWING IS COPYRIGHT PROTECTED AND MUST NOT BE REPRODUCED WITHOUT THE PRIOR WRITTEN AGREEMENT FORME UK.

Aluminium interlocking perforated panels* hung from secondary fixing through 8mm Cembit Cladding Board, into Nvelope Aluminium Support System, with 20mm cavity and 50mm Rockwool Rainscreen Duo Slab Insulation, Nova FR Breather Membrane, on 13mm Cement-bonded Particle Sheathing Board "Y-Wall" fixed to Light Gauge Galvanised Steel Structural Framing System - Double SFS Studs to All Openings - Full Fill Rockwool RWA45 Insulation between Studs.

*Vertical 2.0mm Perforated Aluminium Panels (hatch shown is not true pattern, shown indicatively). Allow for 10mm square holes at 20mm centres, assumed 67% Hollowness. Specialist Sub-Contractor to provide proposal.

Finished RAL 9007 Metallic

Terrace Face:

Aluminium interlocking perforated panels* hung from secondary fixing through 8mm Cembit Cladding Board, into Nvelope Aluminium Support System, with 20mm cavity and 50mm Rockwool Rainscreen Duo Slab Insulation, Nova FR Breather Membrane, on 13mm Cement-bonded Particle Sheathing Board "Y-Wall" fixed to Light Gauge Galvanised Steel Structural Framing System - Double SFS Studs to All Openings - Full Fill Rockwool RWA45 Insulation between Studs.

Plant Face:

13mm Cement-bonded Particle Sheathing Board "Y-Wall" fixed to Light Gauge Galvanised Steel Structural Framing System.

8mm Ceramapanel Cladding Board fixed with Nvelope Aluminium Support System, with 20mm cavity and 70mm Rockwool Rainscreen Duo Slab Insulation, Nova FR Breather Membrane, on 13mm Cement-bonded Particle Sheathing Board "Y-Wall" fixed to Light Gauge Galvanised Steel Structural Framing System - Double SFS Studs to All Openings - Full Fill Rockwool RWA45 Insulation between Studs. Polyethelene/Polythene Low Density 0.15mm Vapour Control Layer - Nova 1280G, and 2no. layers of Standard Wallboard Plasterboard with 3mm Gypsum Plastering coat.

8mm Ceramapanel cement fibre board, fixed with Nvelope Aluminium Support System, with 20mm cavity and 50mm Rockwool Rainscreen Duo Slab Insulation, Nova FR Breather Membrane, on 13mm Cement-bonded Particle Sheathing Board "Y-Wall" fixed to Light Gauge Galvanised Steel Structural Framing System - Double SFS Studs to All Openings - Full Fill Rockwool RWA45 Insulation between Studs. Polyethelene/Polythene Low Density 0.15mm Vapour Control Layer - Nova 1280G, and 2no. layers of Standard Wallboard Plasterboard with 3mm Gypsum Plastering coat.

8mm Ceramapanel cement fibre board with 8mm joints, fixed with Steel Profiles and EPTLEPDM on reverse side of Board, with 20mm cavity, on 13mm Cement-bonded Particle Sheathing Board "Y-Wall" fixed to both sides of Light Gauge Galvanised Steel Structural Framing System.

Aluminium perforated panel hung from secondary fixing through 8mm Cembit Cladding Board, into Nvelope Aluminium Support System, with 20mm cavity, fixed with Steel Profiles and EPTLEPDM on reverse side of Cembit Board, on 13mm Cement-bonded Particle Sheathing Board "Y-Wall" fixed to both sides of Light Gauge Galvanised Steel Structural Framing System.

***External Walls must meet the performance criteria given in BRE Report BR 135 using full-scale test data from BS 8414-1 or BS 8414-2**

PL04	Amendments to suit planning comments	10.10.2022
PL03	Amendments to suit planning comments	11.03.2022
PL02	Amendments to suit planning comments	21.02.2022
PL01	General Amendments	21.10.2021
REV.	REVISION DESCRIPTION	DATE

PROJECT

The Met Building

22-24 Percy Street
London W1T 2BS

DRAWING TITLE

**Podium West Lift
Extension-Canopy Level External
Wall Type Plan**

SCALE @A1

1:20

DATE

24/09/2021

CHECKED BY

RCJ

STATUS

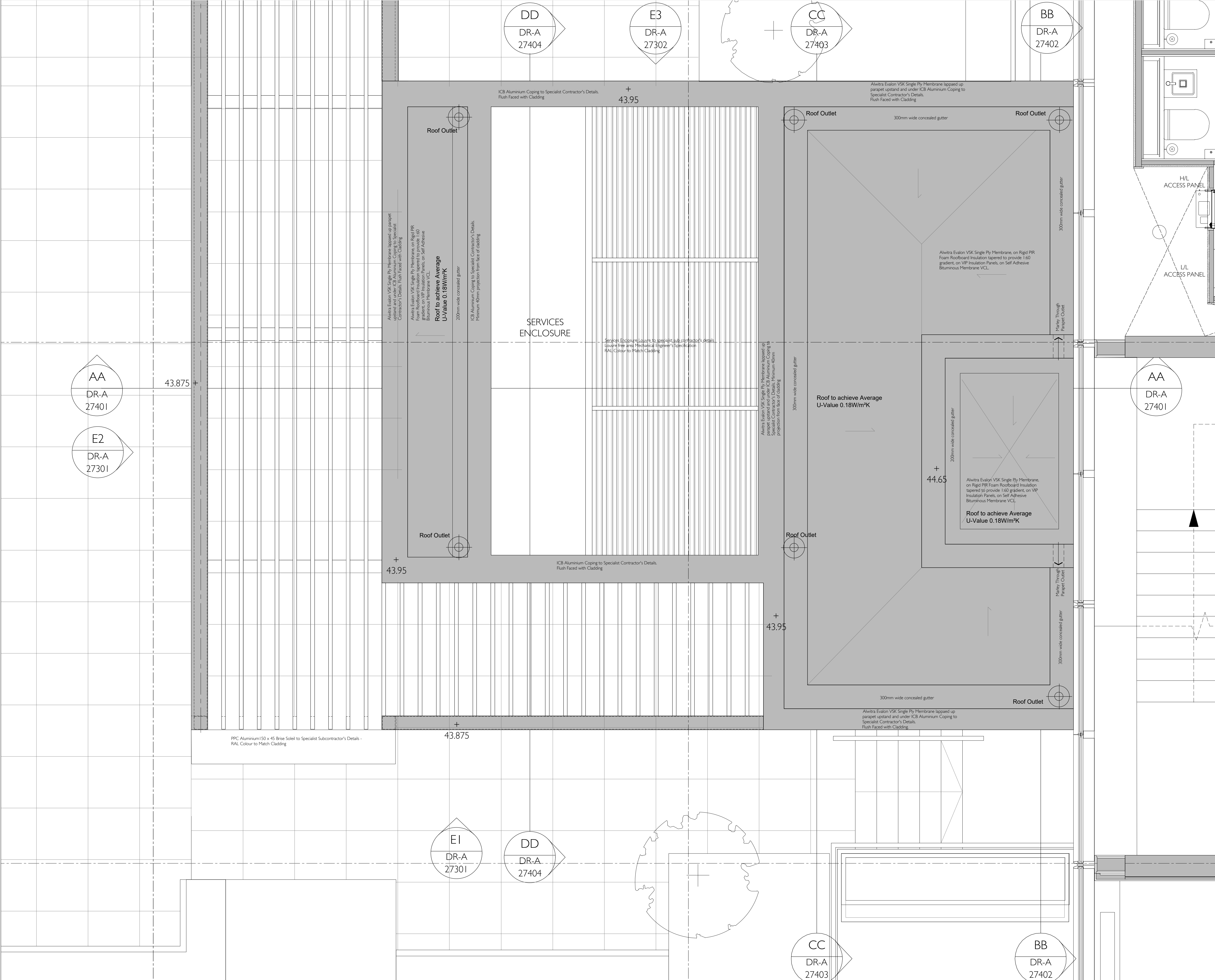
Planning

DRAWING NUMBER

PS5006-FME-ZZ-P2-DR-A-2701.2

FORME
UK

NUTMEG HOUSE 60 GAINSFORD STREET
BUTLERS WHARF LONDON SE1 2NY
T +44 (0)20 7378 1340
WWW.FORME.UK.COM
COMPANY NUMBER 9879724



NOTES

DO NOT SCALE FROM THIS DRAWING.

THE CONTRACTOR SHALL CHECK AND VERIFY ALL DIMENSIONS ON SITE AND REPORT ANY DISCREPANCIES TO FORME BEFORE PROCEEDING WITH THE WORKS.

THIS DRAWING IS COPYRIGHT PROTECTED AND MUST NOT BE REPRODUCED WITHOUT THE PRIOR WRITTEN AGREEMENT FORME UK.

SITE / LOCATION PLAN

PL04	Amendments to suit planning comments	10.10.2022
PL03	Amendments to suit planning comments	11.03.2022
PL02	Amendments to suit planning comments	21.02.2022
PL01	General Amendments	21.10.2021

REV.	REVISION DESCRIPTION	DATE

PROJECT

The Met Building
22-24 Percy Street
London W1T 2BS

DRAWING TITLE

Podium West Lift Extension Roof Plan

SCALE @A1	REV
1:20	PL04

DATE	ORIGINATOR
24/09/2021	DHM

CHECKED BY	APPROVED
RCJ	MT

STATUS

Planning

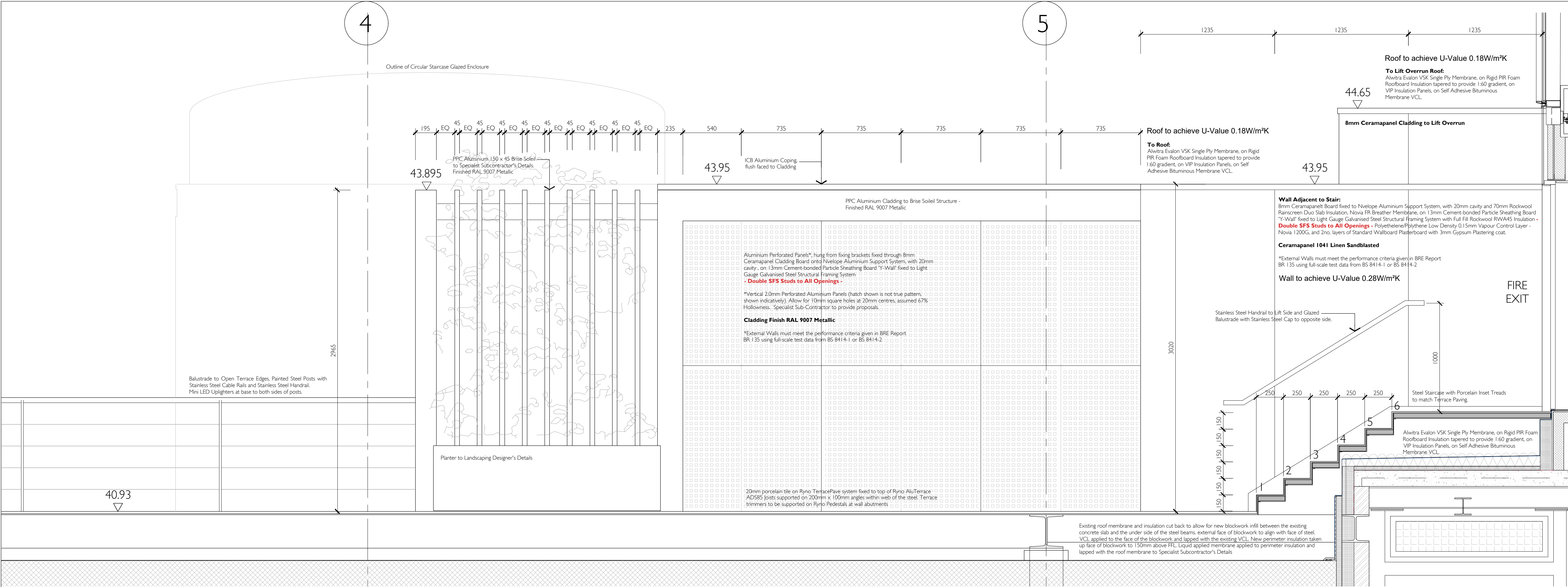
DRAWING NUMBER

PS5006-FME-ZZ-P2-DR-A-27013

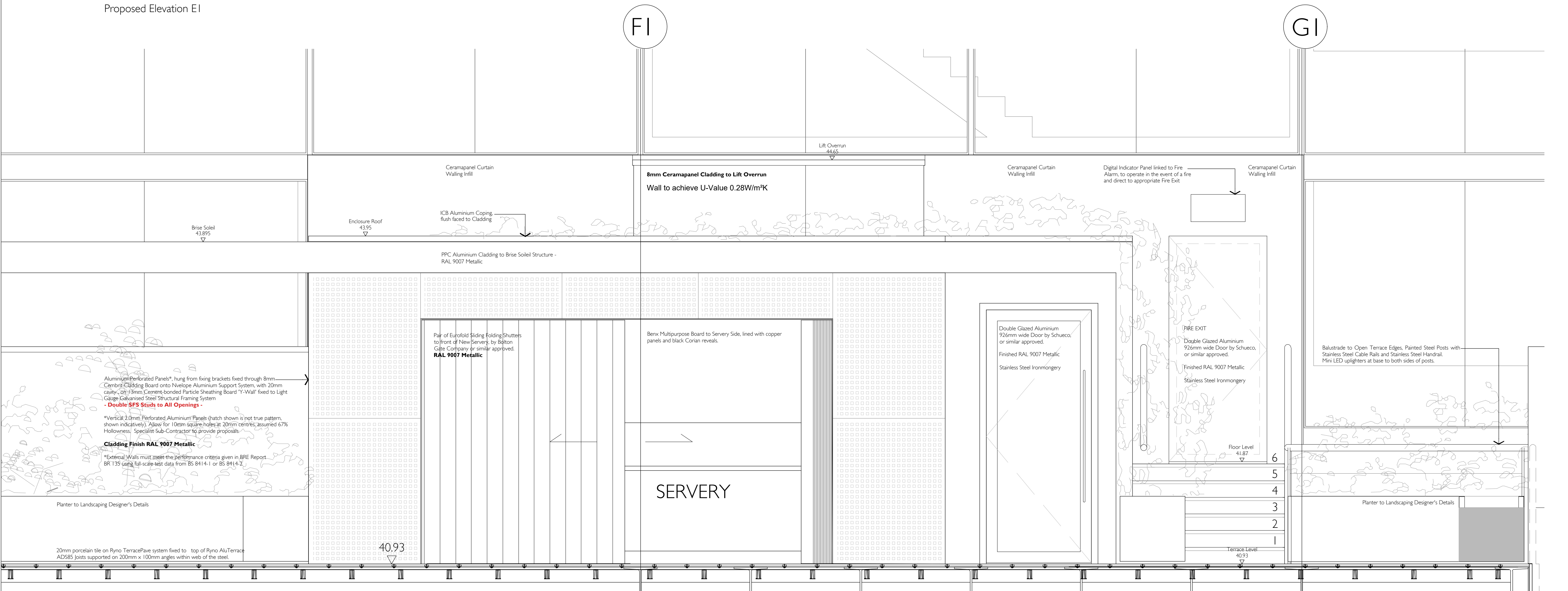
FORME

UK

NUTMEG HOUSE 60 GAINSFORD STREET
BUTLERS WHARF LONDON SE1 2NY
T +44 (0)20 7378 1340
WWW.FORME.UK.COM
COMPANY NUMBER 9879724



Proposed Elevation E1



Proposed Elevation E2

Please note: All dimensions are to be checked and confirmed on site by the contractor prior fabrication

NOTES

DO NOT SCALE FROM THIS DRAWING.

THE CONTRACTOR SHALL CHECK AND VERIFY ALL DIMENSIONS ON SITE AND REPORT ANY DISCREPANCIES TO FORME BEFORE PROCEEDING WITH THE WORKS.

THIS DRAWING IS COPYRIGHT PROTECTED AND MUST NOT BE REPRODUCED WITHOUT THE PRIOR WRITTEN AGREEMENT FORME UK.

SITE / LOCATION PLAN

PL04	Amendments to suit planning comments	10.10.2022
PL03	Amendments to suit planning comments	11.03.2022
PL02	Amendments to suit planning comments	21.02.2022
PL01	General Amendments	21.10.2021

REV.	REVISION DESCRIPTION	DATE

PROJECT

The Met Building
22-24 Percy Street
London W1T 2BS

DRAWING TITLE

Podium West Lift Extension
Proposed Elevations - Sheet 1

SCALE @A1	REV
1:20	PL04

DATE	ORIGINATOR
24/09/2021	DHM

CHECKED BY	APPROVED
RCJ	MT

STATUS

Planning

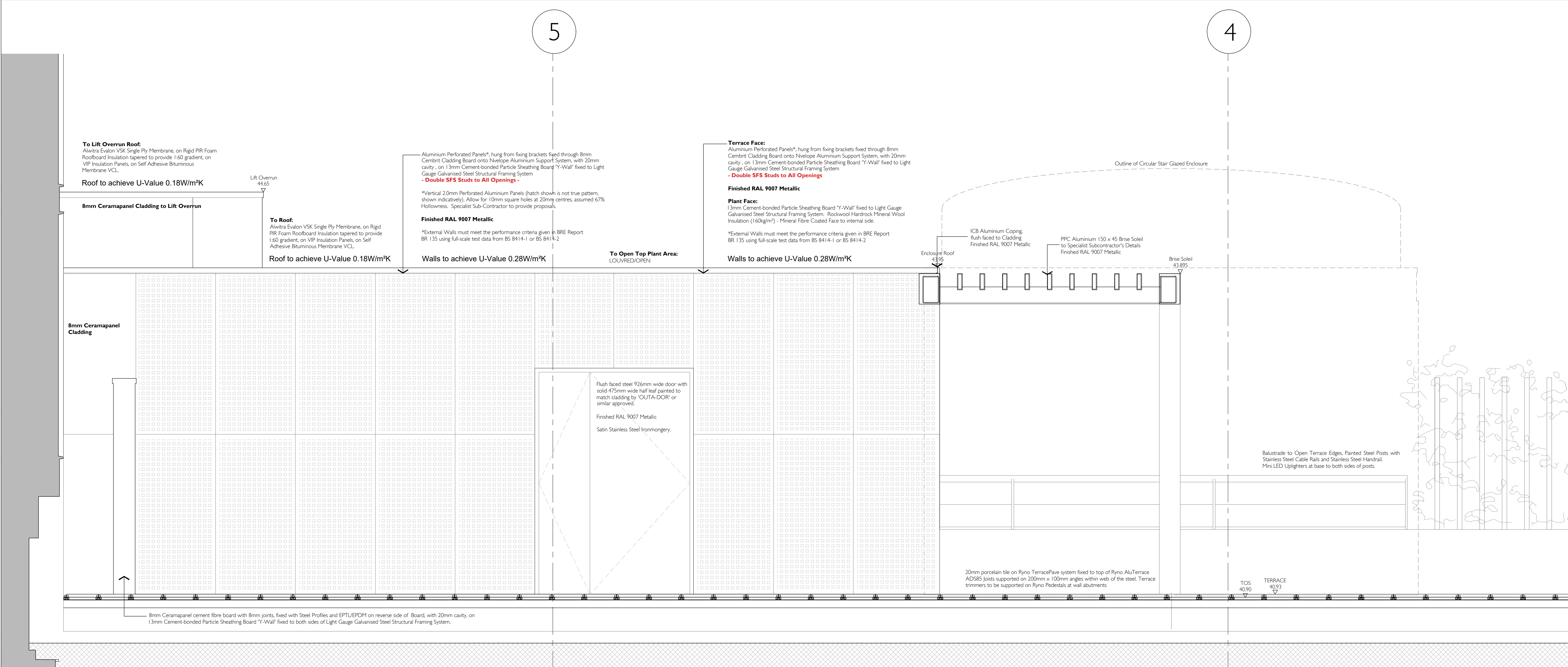
DRAWING NUMBER

PS5006-FME-ZZ-P2-DR-A-27301

FORME

UK

NUTMEG HOUSE 60 GAINSFORD STREET
BUTLERS WHARF LONDON SE1 2NY
T +44 (0)20 7378 1340
WWW.FORME.UK.COM
COMPANY NUMBER 9879724



Proposed Elevation E3

NOTES

DO NOT SCALE FROM THIS DRAWING.

THE CONTRACTOR SHALL CHECK AND VERIFY ALL DIMENSIONS ON SITE AND REPORT ANY DISCREPANCIES TO FORME BEFORE PROCEEDING WITH THE WORKS.

THIS DRAWING IS COPYRIGHT PROTECTED AND MUST NOT BE REPRODUCED WITHOUT THE PRIOR WRITTEN AGREEMENT FORME UK.

SITE / LOCATION PLAN

PL04	Amendments to suit planning comments	10.10.2022
PL03	Amendments to suit planning comments	11.03.2022
PL02	Amendments to suit planning comments	21.02.2022
PL01	General amendments	21.10.2021

REV.	REVISION DESCRIPTION	DATE

PROJECT

The Met Building

22-24 Percy Street

London W1T 2BS

DRAWING TITLE

Podium West Lift Extension

Proposed Elevations - Sheet 2

SCALE @A1	REV
1:20	PL04

DATE	ORIGINATOR
24/09/2021	DHM

CHECKED BY	APPROVED
RCJ	MT

STATUS

Planning

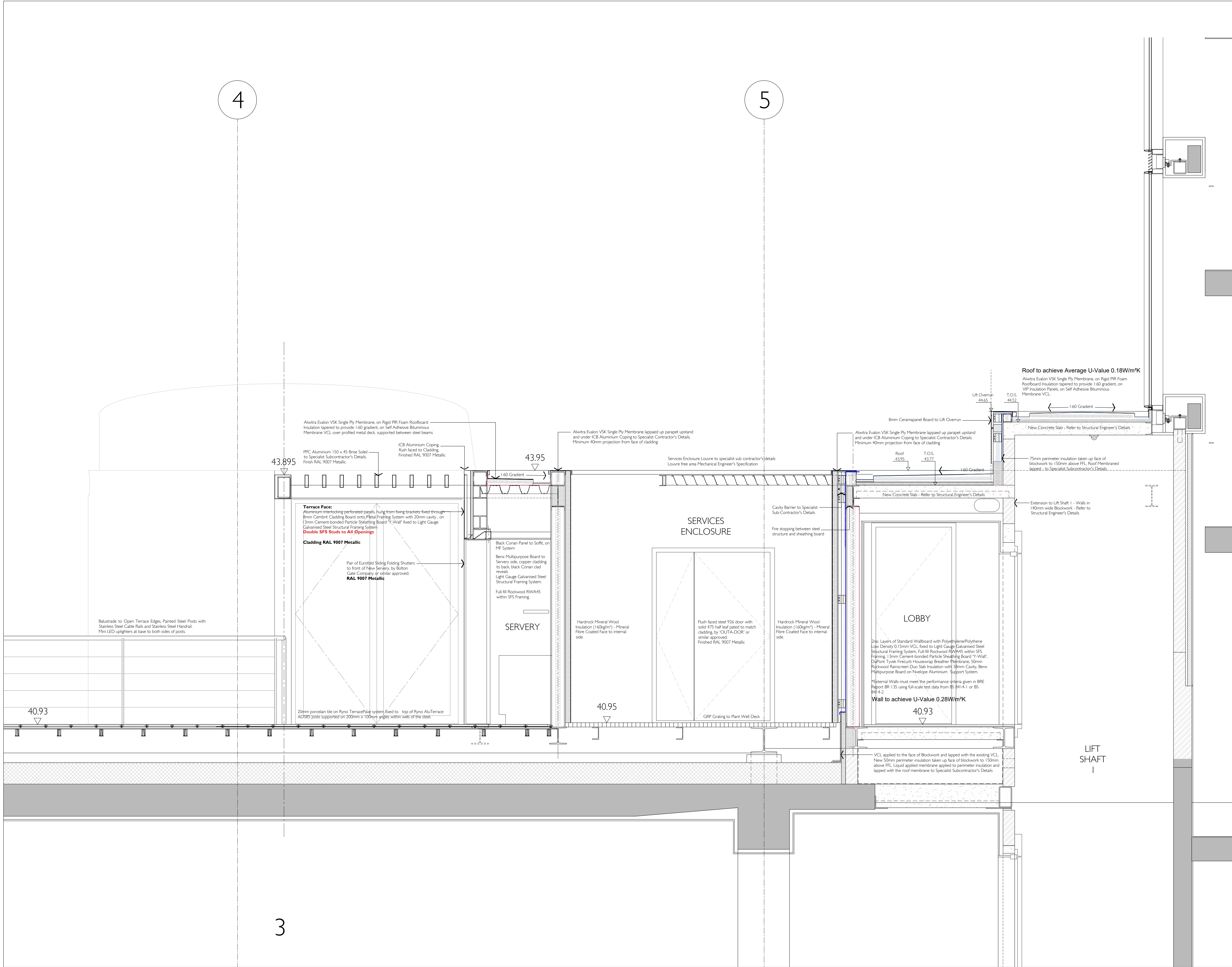
DRAWING NUMBER

PS5006-FME-ZZ-P2-DR-A-27302

FORME

UK

NUTMEG HOUSE 60 GAINSFORD STREET
BUTLERS WHARF LONDON SE1 2NY
T +44 (0)20 7378 1340
WWW.FORME.UK.COM
COMPANY NUMBER 9879724



NOTES

DO NOT SCALE FROM THIS DRAWING.

THE CONTRACTOR SHALL CHECK AND VERIFY ALL DIMENSIONS ON SITE AND REPORT ANY DISCREPANCIES TO FORME BEFORE PROCEEDING WITH THE WORKS.

THIS DRAWING IS COPYRIGHT PROTECTED AND MUST NOT BE REPRODUCED WITHOUT THE PRIOR WRITTEN AGREEMENT FORME UK.

SITE / LOCATION PLAN

PL04	Amendments to suit planning comments	10.10.2022
PL03	Amendments to suit planning comments	11.03.2022
PL02	Amendments to suit planning comments	21.02.2022
PL01	General Amendments	21.10.2021

REV.	REVISION DESCRIPTION	DATE

PROJECT

The Met Building

22-24 Percy Street
London W1T 2BS

DRAWING TITLE

**Podium West Lift Extension
Proposed Section AA**

SCALE @A1	REV
1:20	PL04

DATE	ORIGINATOR
24/09/2021	DHM

CHECKED BY	APPROVED
RCJ	MT

STATUS

Planning

DRAWING NUMBER

PS5006-FME-ZZ-P2-DR-A-27401

FORME UK

NUTMEG HOUSE 60 GAINSFORD STREET
BUTLERS WHARF LONDON SE1 2NY
T +44 (0)20 7378 1340
WWW.FORME.UK.COM
COMPANY NUMBER 9879724

THIS DRAWING IS COPYRIGHT PROTECTED AND MUST NOT BE
REPRODUCED WITHOUT THE PRIOR WRITTEN AGREEMENT
FORME UK.



PL04	Amendments to suit planning comments	10.10.2022
PL03	Amendments to suit planning comments	11.03.2022
PL02	Amendments to suit planning comments	21.02.2022
PL01	General Amendments	21.10.2021
REV.	REVISION DESCRIPTION	DATE

The Met Building
22-24 Percy Street
London W1T 2BS

Podium West Lift Extension Proposed Section BB

SCALE @A
1:20

SCALE @A
1:20

DATE
24/09/2

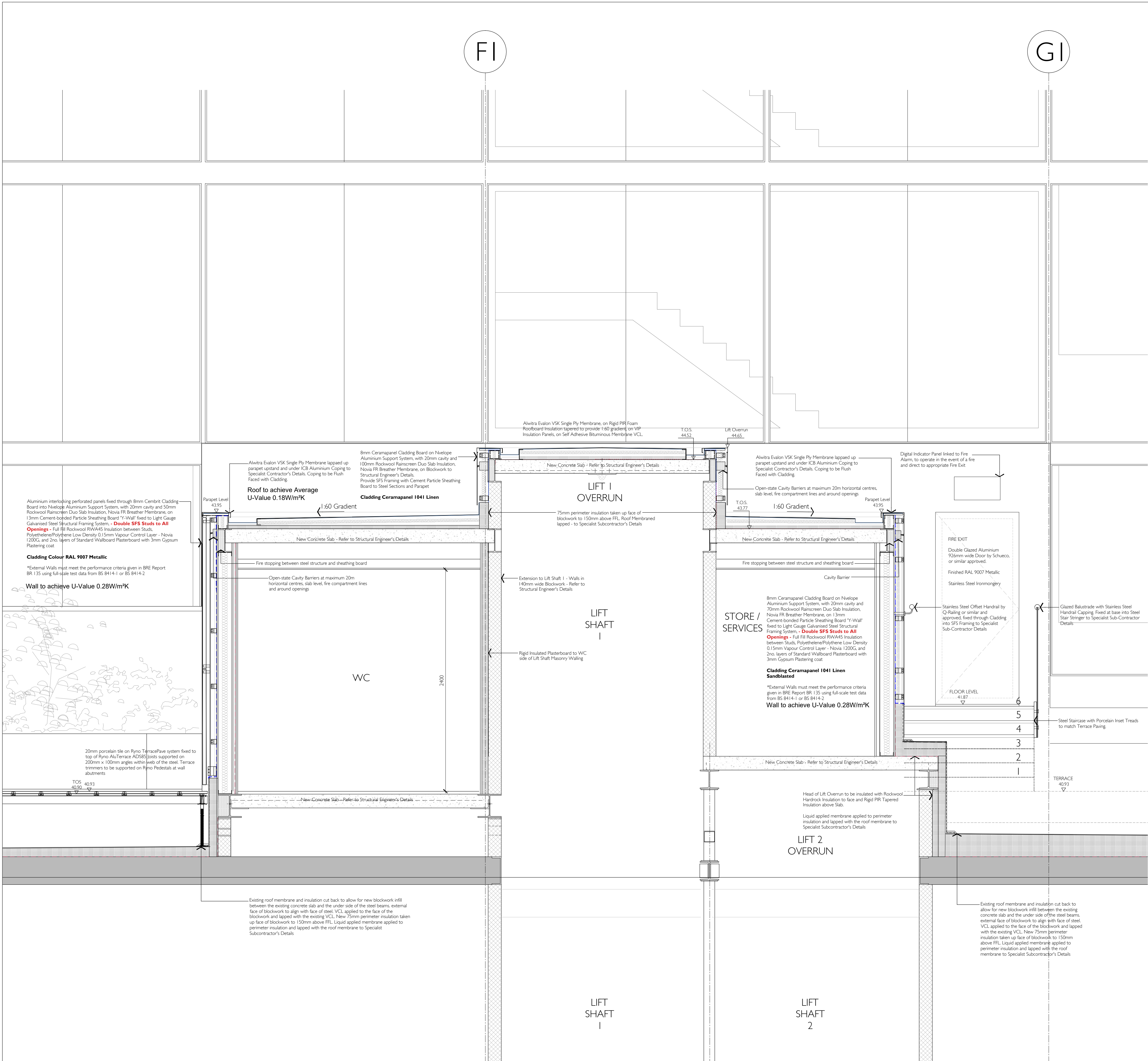
CHECKED
RCI

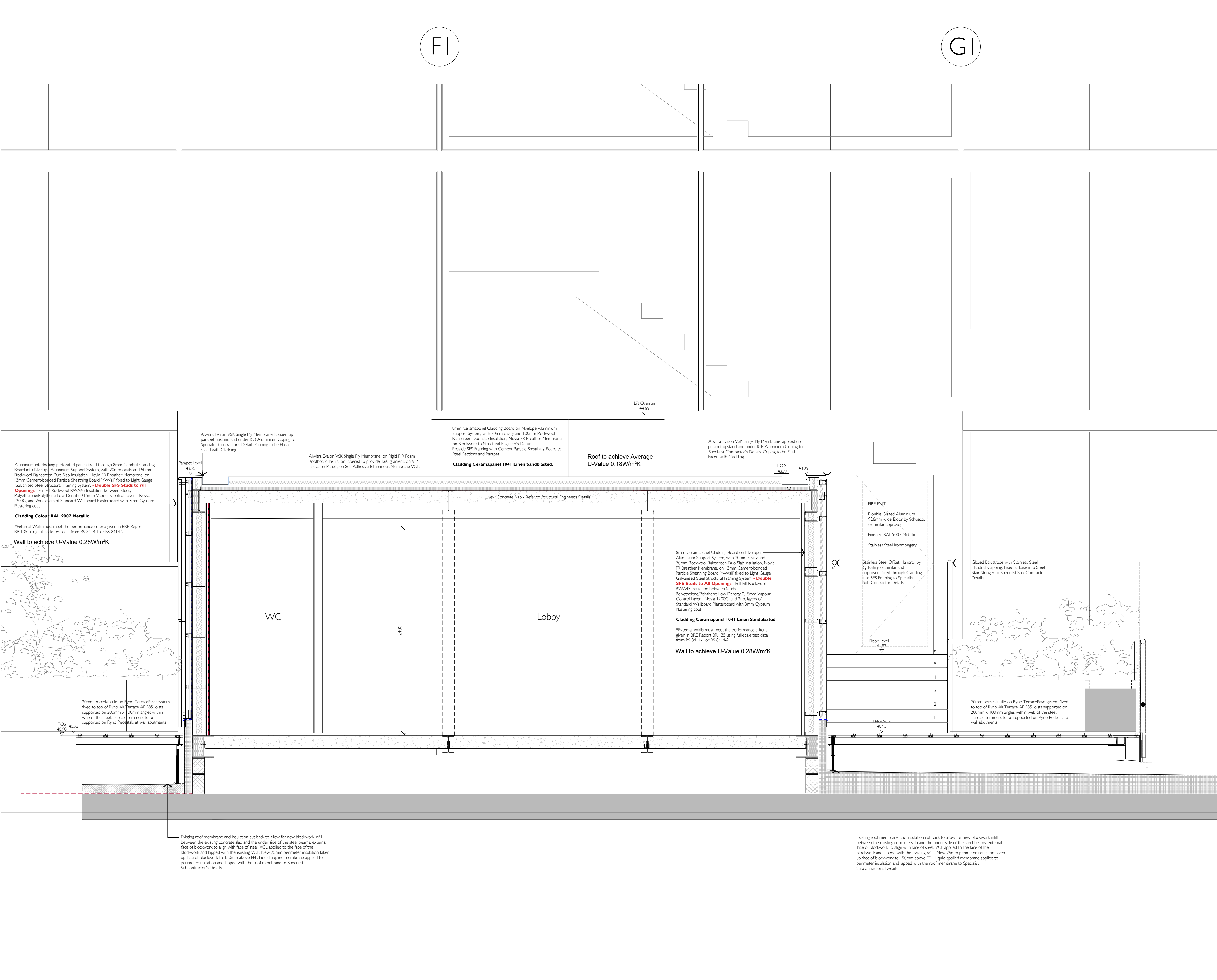
Planni

PS5006-FME-ZZ-P2-DR-A-27402

FORME
UK

NUTMEG HOUSE 60 GAINSFORD STREET
BUTLERS WHARF LONDON SE1 2NY
T +44 (0)20 7378 1340
WWW.FORME.UK.COM
COMPANY NUMBER 9879724





NOTES

DO NOT SCALE FROM THIS DRAWING.

THE CONTRACTOR SHALL CHECK AND VERIFY ALL DIMENSIONS ON SITE AND REPORT ANY DISCREPANCIES TO FORME BEFORE PROCEEDING WITH THE WORKS.

THIS DRAWING IS COPYRIGHT PROTECTED AND MUST NOT BE REPRODUCED WITHOUT THE PRIOR WRITTEN AGREEMENT FORME UK.

SITE / LOCATION PLAN

PL04	Amendments to suit planning comments	10.10.2022
PL03	Amendments to suit planning comments	11.03.2022
PL02	Amendments to suit planning comments	21.02.2022
PL01	General Amendments	21.10.2021

REV.	REVISION DESCRIPTION	DATE

PROJECT

The Met Building

22-24 Percy Street

London W1T 2BS

DRAWING TITLE

Podium West Lift Extension

Proposed Section CC

SCALE @A1	REV
1:20	PL04

DATE	ORIGINATOR
24/09/2021	DHM

CHECKED BY	APPROVED
RCJ	MT

STATUS

Planning

DRAWING NUMBER

PS5006-FME-ZZ-P2-DR-A-27403

FORME

UK

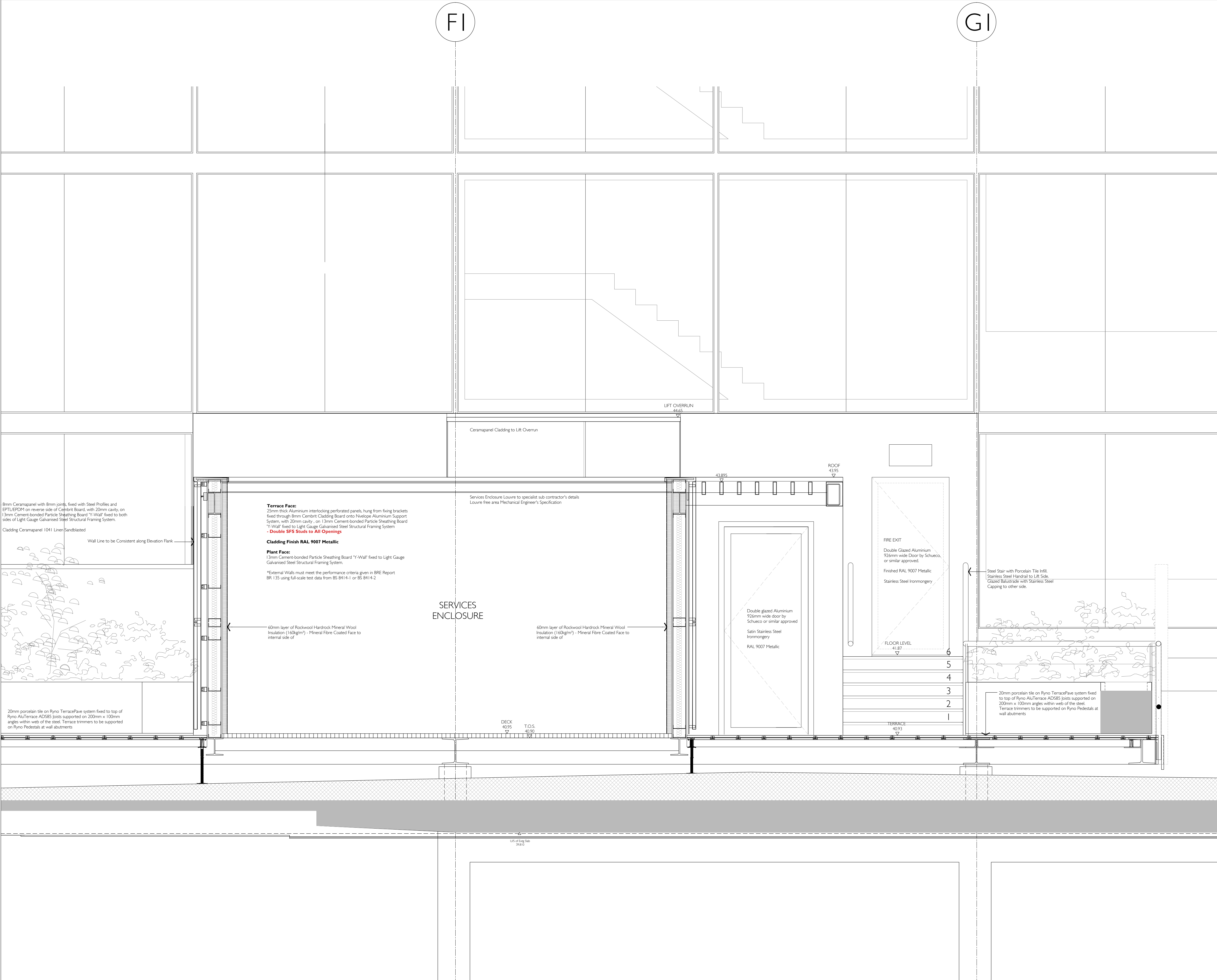
NUTMEG HOUSE 60 GAINSFORD STREET

BUTLERS WHARF LONDON SE1 2NY

T +44 (0)20 7378 1340

WWW.FORME.UK.COM

COMPANY NUMBER 9879724



NOTES

DO NOT SCALE FROM THIS DRAWING.

THE CONTRACTOR SHALL CHECK AND VERIFY ALL DIMENSIONS ON SITE AND REPORT ANY DISCREPANCIES TO FORME BEFORE PROCEEDING WITH THE WORKS.

THIS DRAWING IS COPYRIGHT PROTECTED AND MUST NOT BE REPRODUCED WITHOUT THE PRIOR WRITTEN AGREEMENT FORME UK.

SITE / LOCATION PLAN

PL04	Amendments to suit planning comments	10.10.2022
PL03	Amendments to suit planning comments	11.03.2022
PL02	Amendments to suit planning comments	21.02.2022
PL01	General Amendments	21.10.2021
REV.	REVISION DESCRIPTION	DATE

PROJECT

The Met Building
22-24 Percy Street
London W1T 2BS

DRAWING TITLE

Podium West Lift Extension
Proposed Section DD

SCALE @A1	REV
1:20	PL04

DATE	ORIGINATOR
24/09/2021	DHM

CHECKED BY	APPROVED
RCJ	MT

STATUS

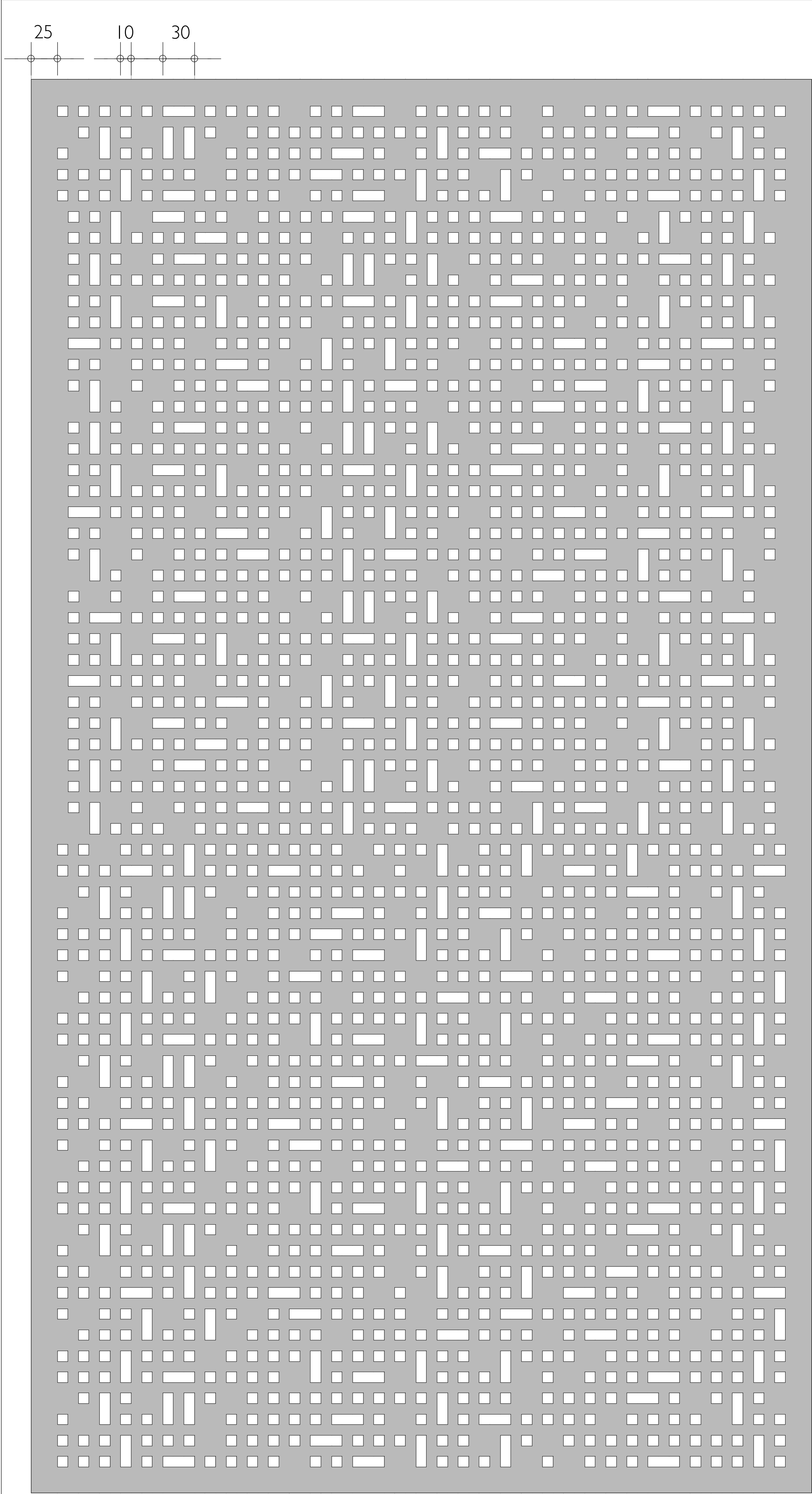
Planning

DRAWING NUMBER

PS5006-FME-ZZ-P2-DR-A-27404

FORME
UK

NUTMEG HOUSE 60 GAINSFORD STREET
BUTLERS WHARF LONDON SE1 2NY
T +44 (0)20 7378 1340
WWW.FORME.UK.COM
COMPANY NUMBER 9879724



Example Image of Panel Installation

Typical Perforated Panel Elevation

NOTES

DO NOT SCALE FROM THIS DRAWING.

THE CONTRACTOR SHALL CHECK AND VERIFY ALL DIMENSIONS ON SITE AND REPORT ANY DISCREPANCIES TO FORME BEFORE PROCEEDING WITH THE WORKS.

THIS DRAWING IS COPYRIGHT PROTECTED AND MUST NOT BE REPRODUCED WITHOUT THE PRIOR WRITTEN AGREEMENT FORME UK.

SITE / LOCATION PLAN



PL02	Updated Perforation Design	10.10.2022
PL01	Planning	09.08.2022
REV.	REVISION DESCRIPTION	DATE

PROJECT

The Met Building
22-24 Percy Street
London W1T 2BS

DRAWING TITLE

**Podium West Lift Extension -
Typical Perforated Panel Elevation**

SCALE @A1	REV
1:2.5	PL02
DATE	ORIGINATOR
18.03.2022	LL
CHECKED BY	APPROVED
RCJ	MT

STATUS

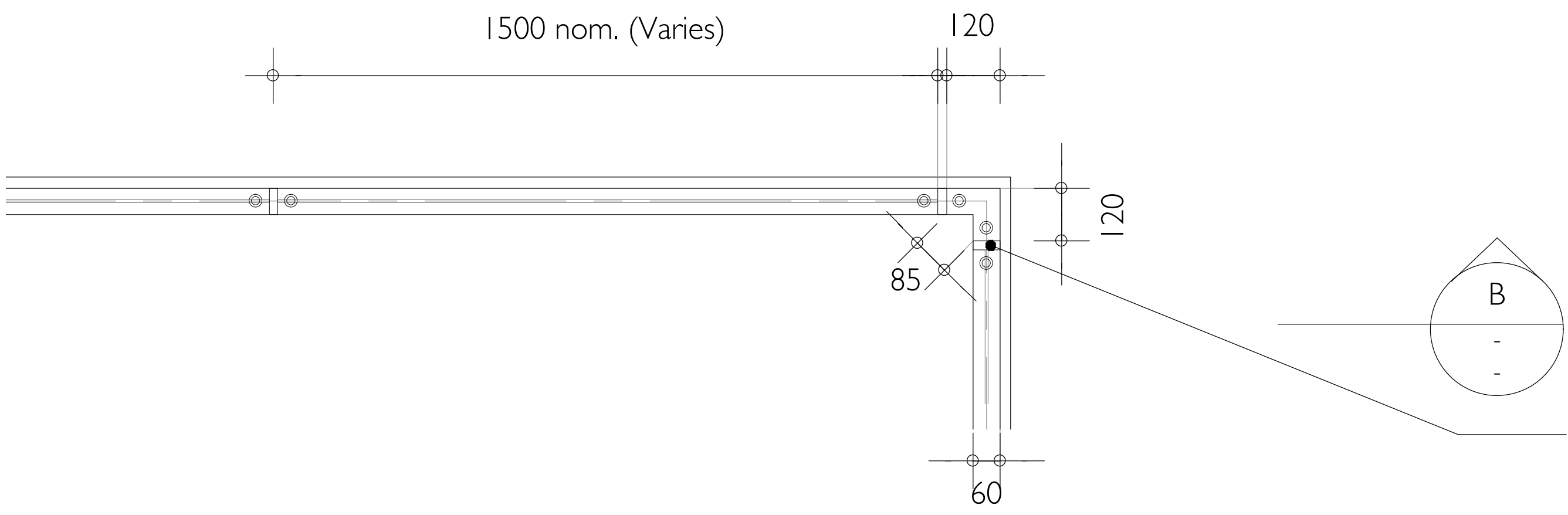
Planning

DRAWING NUMBER

PS5006-FME-ZZ-P2-DR-A-27303

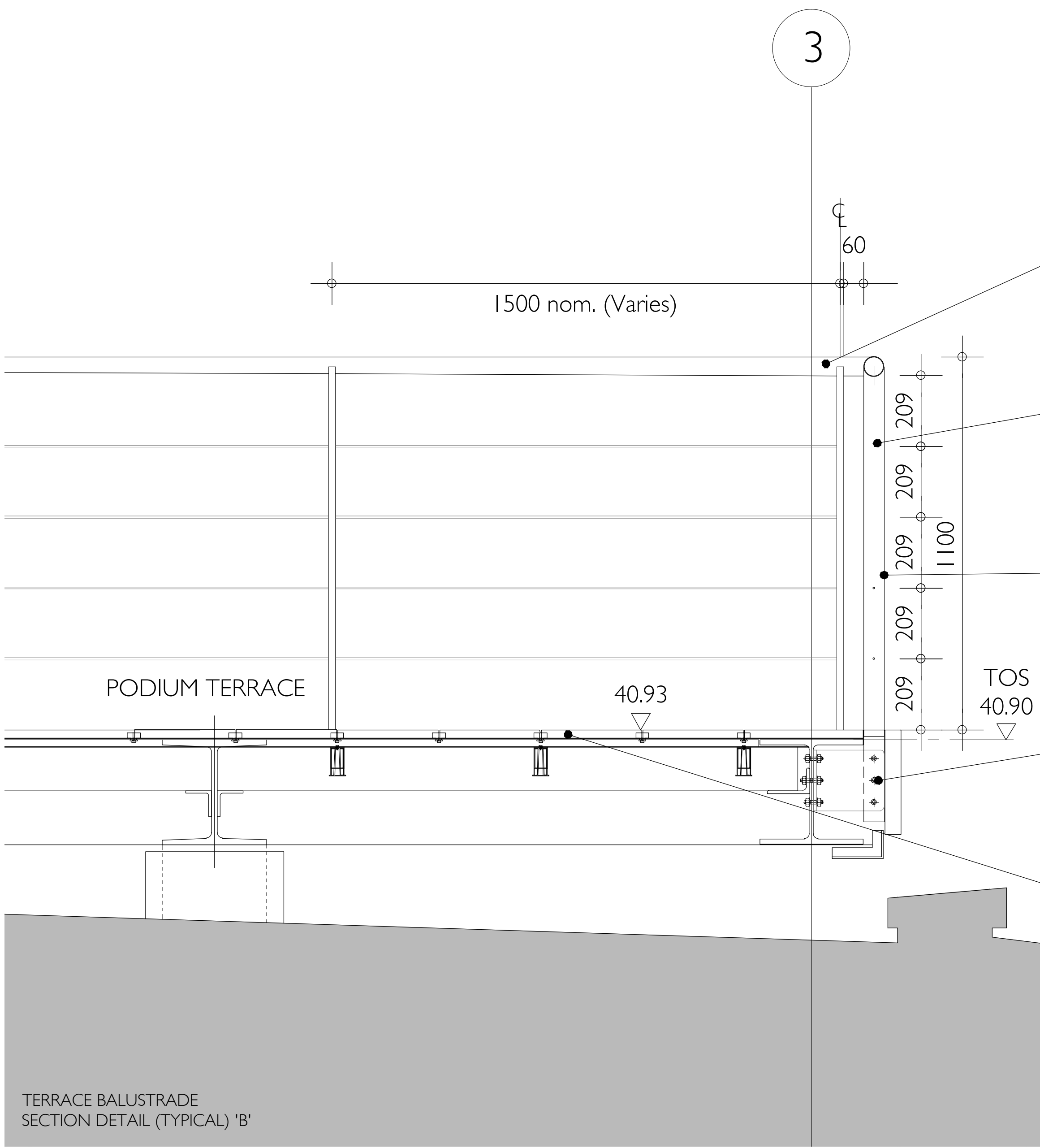
FORME
UK

NUTMEG HOUSE 60 GAINSFORD STREET
BUTLERS WHARF LONDON SE1 2NY
T +44 (0)20 7378 1340
WWW.FORMEUK.COM
COMPANY NUMBER 9879724



TERRACE BALUSTRADE
PLAN DETAIL (TYPICAL) 'A'

STAINLESS STEEL BALUSTRADE POSTS, WITH
STAINLESS STEEL CABLE INFILLS. MINI LED
UPLIGHTERS AT BASE TO BOTH SIDES OF
POSTS.



TERRACE BALUSTRADE
SECTION DETAIL (TYPICAL) 'B'

CIRCULAR STAINLESS STEEL HANDRAIL

STAINLESS STEEL BALUSTRADE POSTS, WITH
STAINLESS STEEL CABLE INFILLS. MINI LED
UPLIGHTERS AT BASE TO BOTH SIDES OF
POSTS.

BALUSTRADE POST, HANDRAIL AND
STAINLESS STEEL INFILL RAILS TO COMPLY
WITH BUILDING REGULATIONS AND UK
STANDARDS

BALUSTRADE POST SECURELY FIXED TO
STRUCTURAL STEELWORK WITH FASCIA
COVER PANELS, FINISHED RAL 9007
METALLIC - REFER TO STRUCTURAL
ENGINEERS DRAWINGS FOR DETAILS

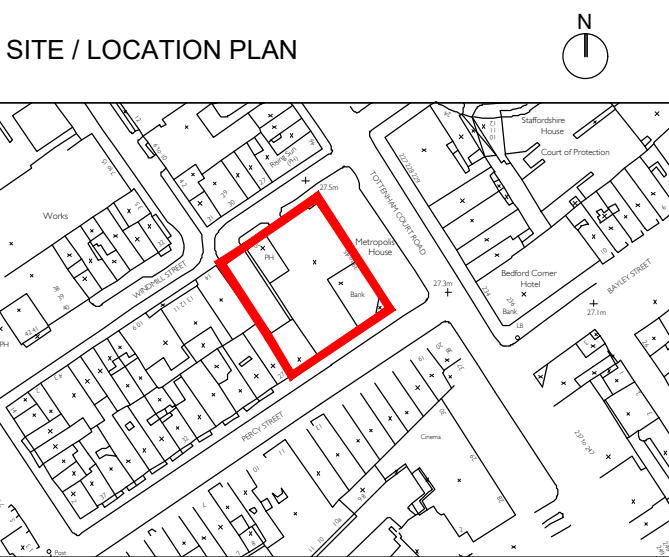
20MM THK PORCELAIN PAVERS SUPPORTED
WITHIN A PROPRIETARY TERRACE
DECKING SYSTEM FIXED TO TERRACE
STEELWORK FRAME - REFER TO
STRUCTURAL ENGINEER FOR DETAILS.

NOTES

DO NOT SCALE FROM THIS DRAWING.

THE CONTRACTOR SHALL CHECK AND VERIFY ALL
DIMENSIONS ON SITE AND REPORT ANY DISCREPANCIES TO
FORME BEFORE PROCEEDING WITH THE WORKS.

THIS DRAWING IS COPYRIGHT PROTECTED AND MUST NOT BE
REPRODUCED WITHOUT THE PRIOR WRITTEN AGREEMENT
FORME UK.



PL02	Lighting Revisions	10.10.2022
PL01	Planning	13.05.2022
REV.	REVISION DESCRIPTION	DATE

PROJECT

The Met Building
22-24 Percy Street
London W1T 2BS

DRAWING TITLE

**Terrace Works Typical Balustrade
Detail**

SCALE @A1

1:10

REV

PL01

DATE

13/05/2022

ORIGINATOR

SPL

CHECKED BY

RCJ

APPROVED

MT

STATUS

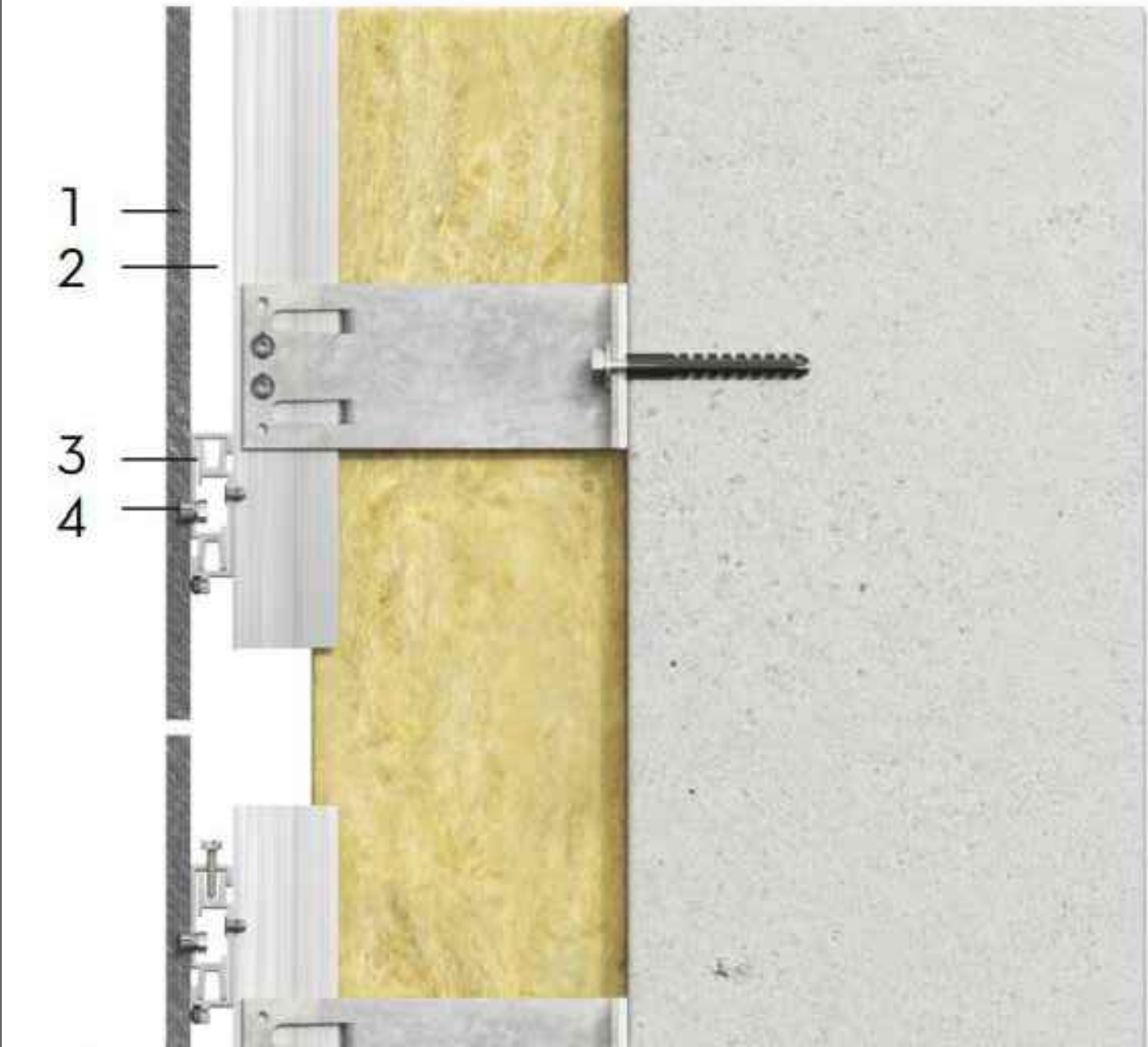
Planning

DRAWING NUMBER

PS5006-FME-ZZ-P2-DR-A-27304

FORME
UK

NUTMEG HOUSE 60 GAINSFORD STREET
BUTLERS WHARF LONDON SE1 2NY
T +44 (0)20 7378 1340
WWW.FORME.UK.COM
COMPANY NUMBER 9879724



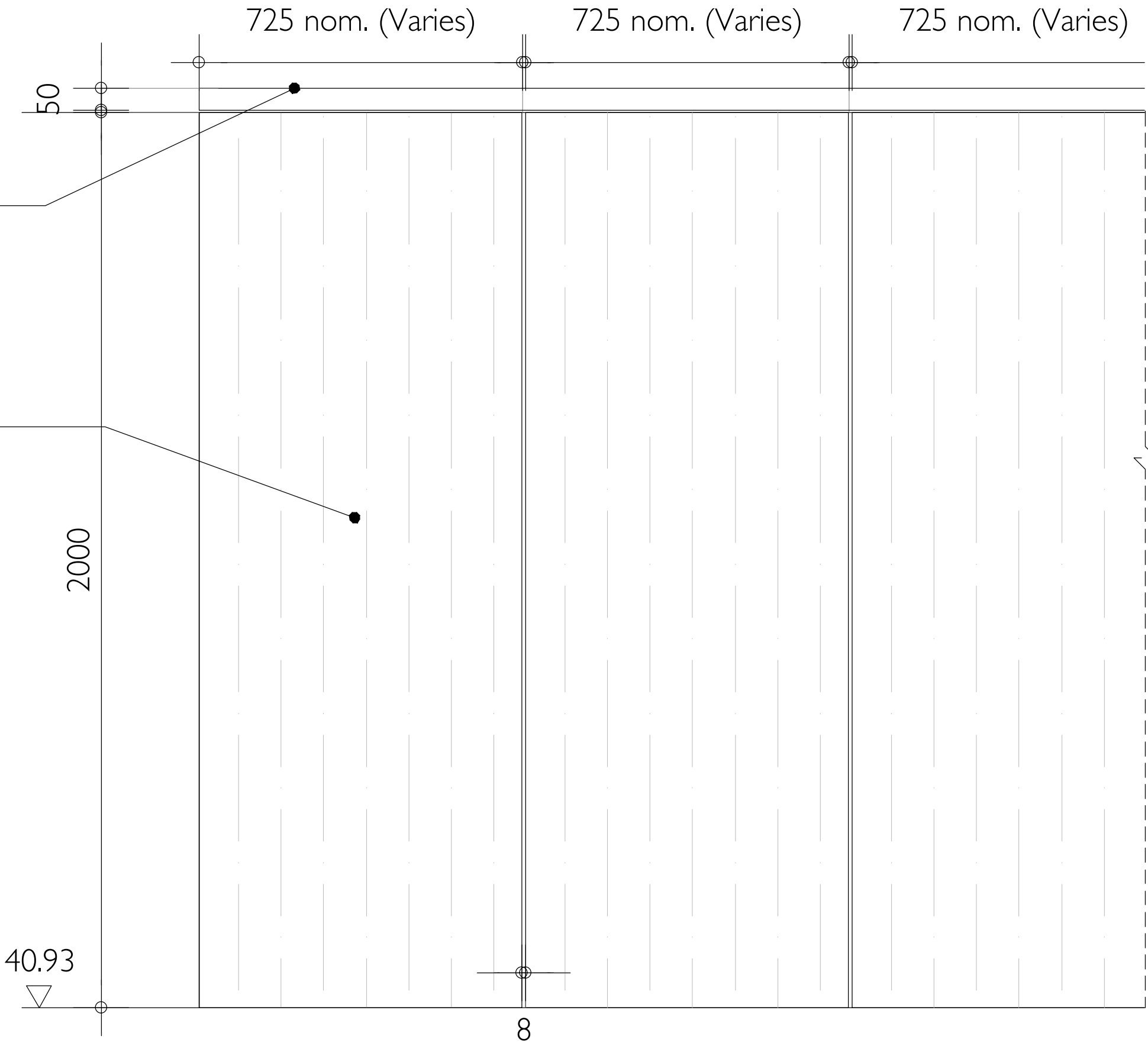
TYPICAL PANEL HIDDEN FIXING DETAILS

PPC PRESSED ALUMINIUM CAPPING TO TOP OF SCREEN, COLOUR TO MATCH PODIUM WALLS.

CERMAPANEL 1041 LINEN SANDBLASTED CLADDING PANELS TO MATCH EXISTING PORTLAND STONE, FIXED TO SFS SYSTEM WITH HIDDEN FIX SOLUTION - HORIZONTAL SPLIT RAILS FIXED TO SFS, SUPPORTED WITH STRUCTURAL STEEL WINDPOSTS TO STRUCTURAL ENGINEER'S DESIGN.

8MM JOINTS BETWEEN BOARDS.

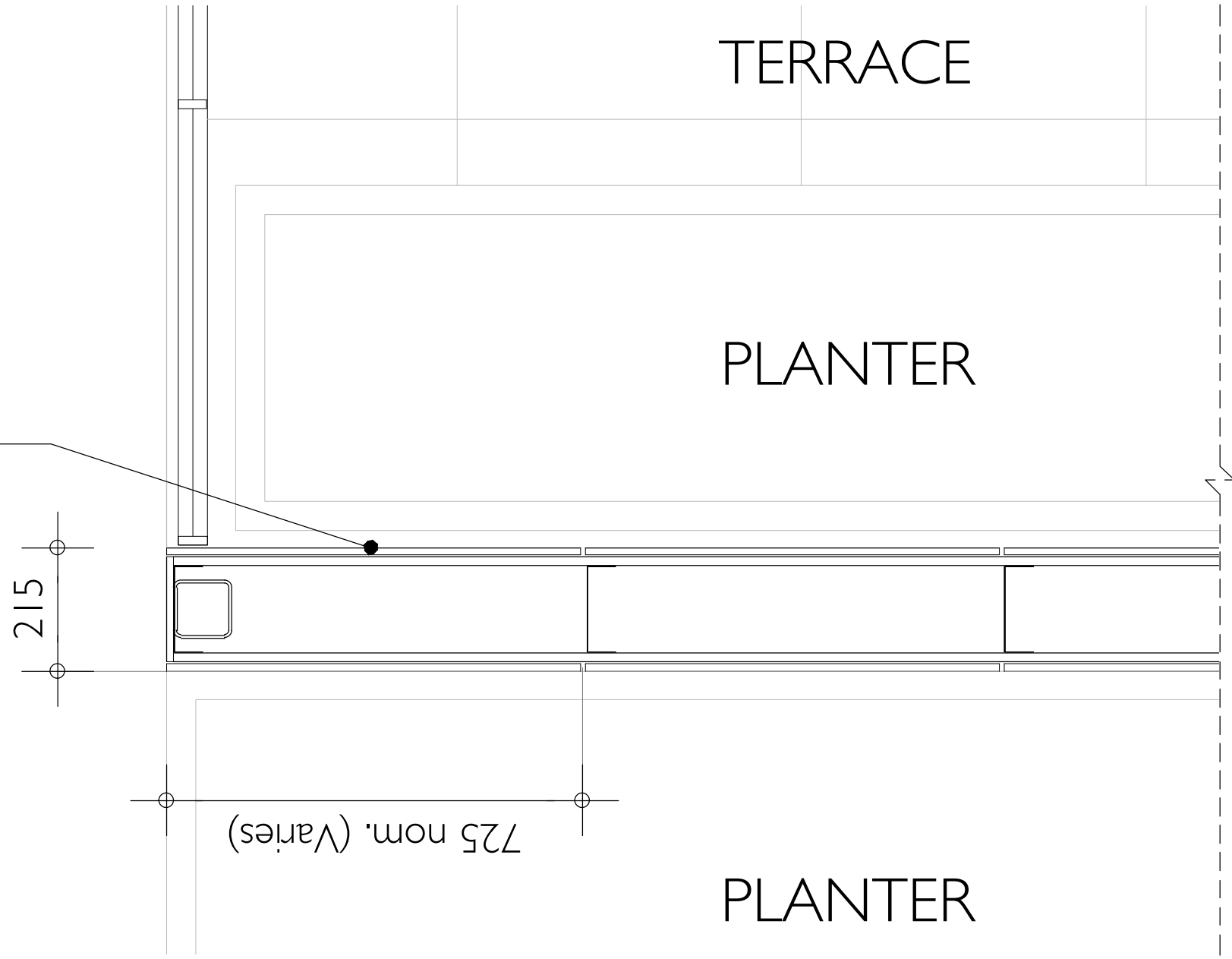
VERTICAL SUB-DIVISIONS OF BOARDS TO ALIGN WITH EXISTING BUILDING CURTAIN WALLING WHERE APPLICABLE.



TYPICAL SCREEN (WEST PODIUM)
ELEVATION 1:10

CERMAPANEL 1041 LINEN SANDBLASTED CLADDING PANELS TO MATCH EXISTING PORTLAND STONE, FIXED TO SFS SYSTEM WITH HIDDEN FIX SOLUTION - HORIZONTAL SPLIT RAILS FIXED TO SFS, SUPPORTED WITH STRUCTURAL STEEL WINDPOSTS TO STRUCTURAL ENGINEER'S DESIGN.

8MM JOINTS BETWEEN BOARDS.



TYPICAL SCREEN (WEST PODIUM)
PLAN 1:20

NOTES

DO NOT SCALE FROM THIS DRAWING.

THE CONTRACTOR SHALL CHECK AND VERIFY ALL DIMENSIONS ON SITE AND REPORT ANY DISCREPANCIES TO FORME BEFORE PROCEEDING WITH THE WORKS.

THIS DRAWING IS COPYRIGHT PROTECTED AND MUST NOT BE REPRODUCED WITHOUT THE PRIOR WRITTEN AGREEMENT FORME UK.

SITE / LOCATION PLAN

PL02	Specification Update	10.10.2022
PL01	Planning	13.05.2022
REV.	REVISION DESCRIPTION	DATE

PROJECT

The Met Building
22-24 Percy Street
London W1T 2BS

DRAWING TITLE

**Podium West Lift Extension
Typical Partition Screen Details**

SCALE @A1	REV
1:10	PL02
DATE	ORIGINATOR
13.05.2022	SPL
CHECKED BY	APPROVED
RCJ	MT

STATUS

Planning

DRAWING NUMBER

PS5006-FME-ZZ-P2-DR-A-27305

FORME
UK

NUTMEG HOUSE 60 GAINSFORD STREET
BUTLERS WHARF LONDON SE1 2NY
T +44 (0)20 7378 1340
WWW.FORME.UK.COM
COMPANY NUMBER 9879724