

Listed building consent application (PP-11570388)  
Additional documents: current windows layout

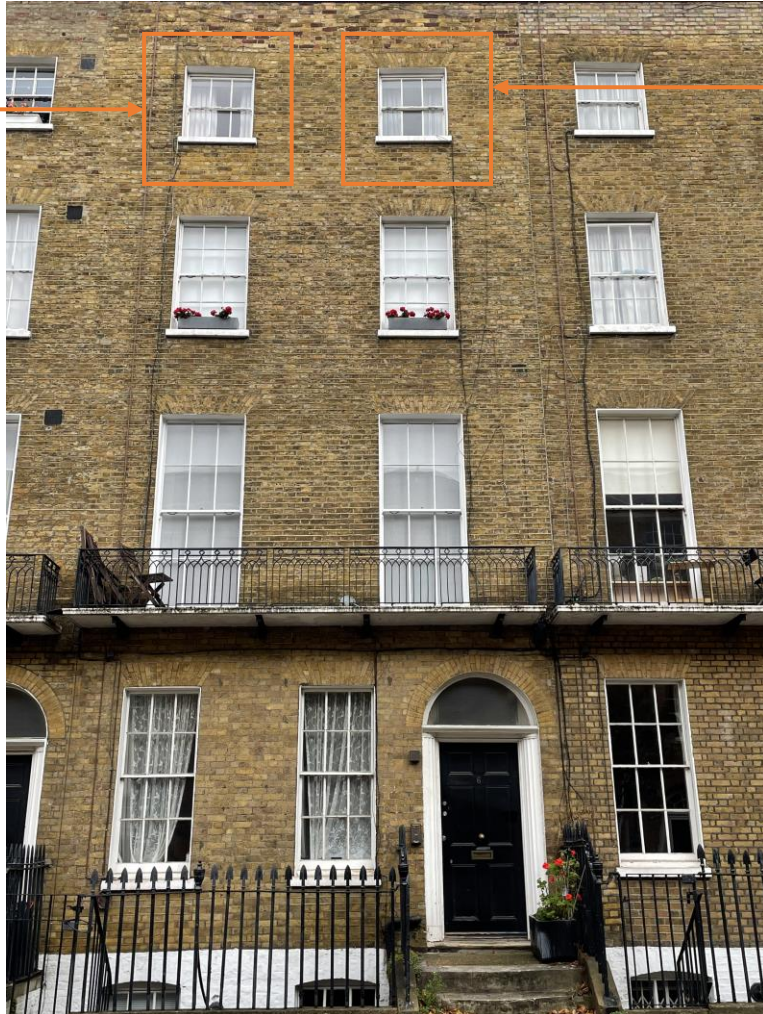
Leaseholder: Daniela Allamandi

Apartment address: 6D Mecklenburgh St, London, WC1N 2AH

Date: 23-October-2022

## Current windows | Street view

Window #1



Window #2

View from Mecklenburgh Street

Window #3



Window #4

View from Gray's Inns Road



# Window # 1 | Detailed view

Outside wooden window components are rotten



View from Mecklenburgh Street

Window does not close fully



View from the inside

Wooden frame is rotten



Zoomed view on detail



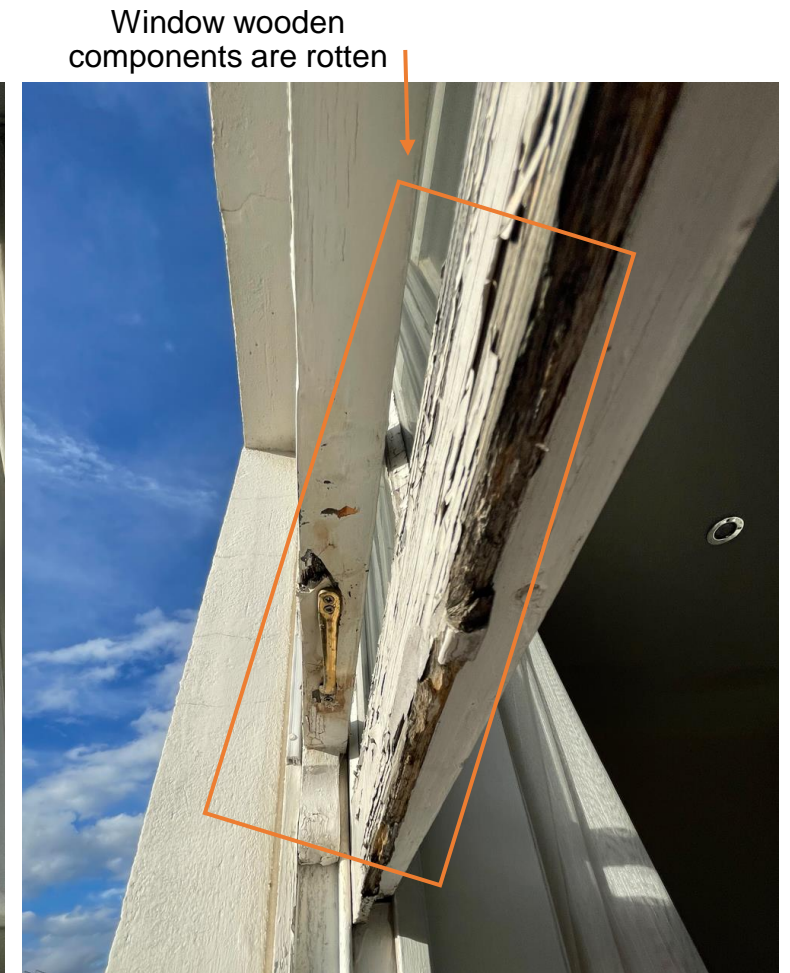
## Window # 2 | Detailed view



View from Mecklenburgh Street



View from the inside



Zoomed view on detail



## Window # 3 | Detailed view

Window does not  
close fully

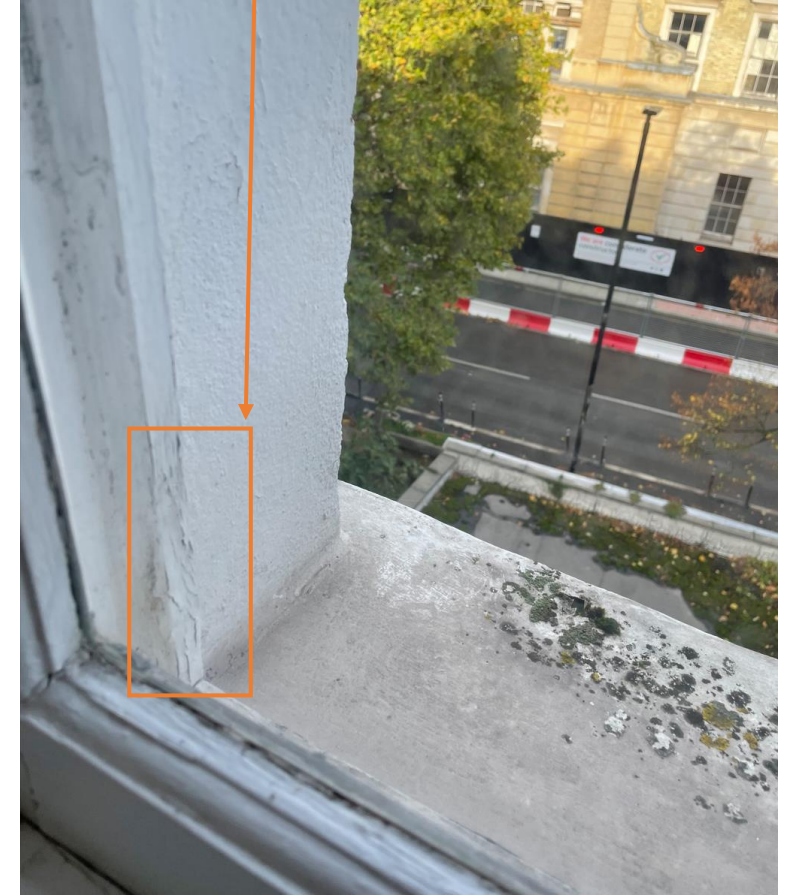


View from Gray's Inn Road



View from the inside

Outside wooden  
frame is rotten



Zoomed view on detail



## Window # 4 | Detailed view



View from Gray's Inn Road



View from the inside



Zoomed view on detail