



ASTECO INDUSTRIA s.r.l.  
STEEL KIOSKS AND MODULAR BUILDINGS

**ATTICO** SOA  
Azienda certificata  
SOA 0518 classe IV  
e UNI EN ISO 9001:2008



Viale della Siderurgia n°18 - CERQUETO DI SANTA PALOMBA 00040 POMEZIA (ROMA)

designed by  
**Lorica G.**

drawing title:

set of drawings number:

date

ASTECO INDUSTRIA reserves the ownership rights on this drawing and the same cannot be reproduced or transferred to third parties without its written authorization

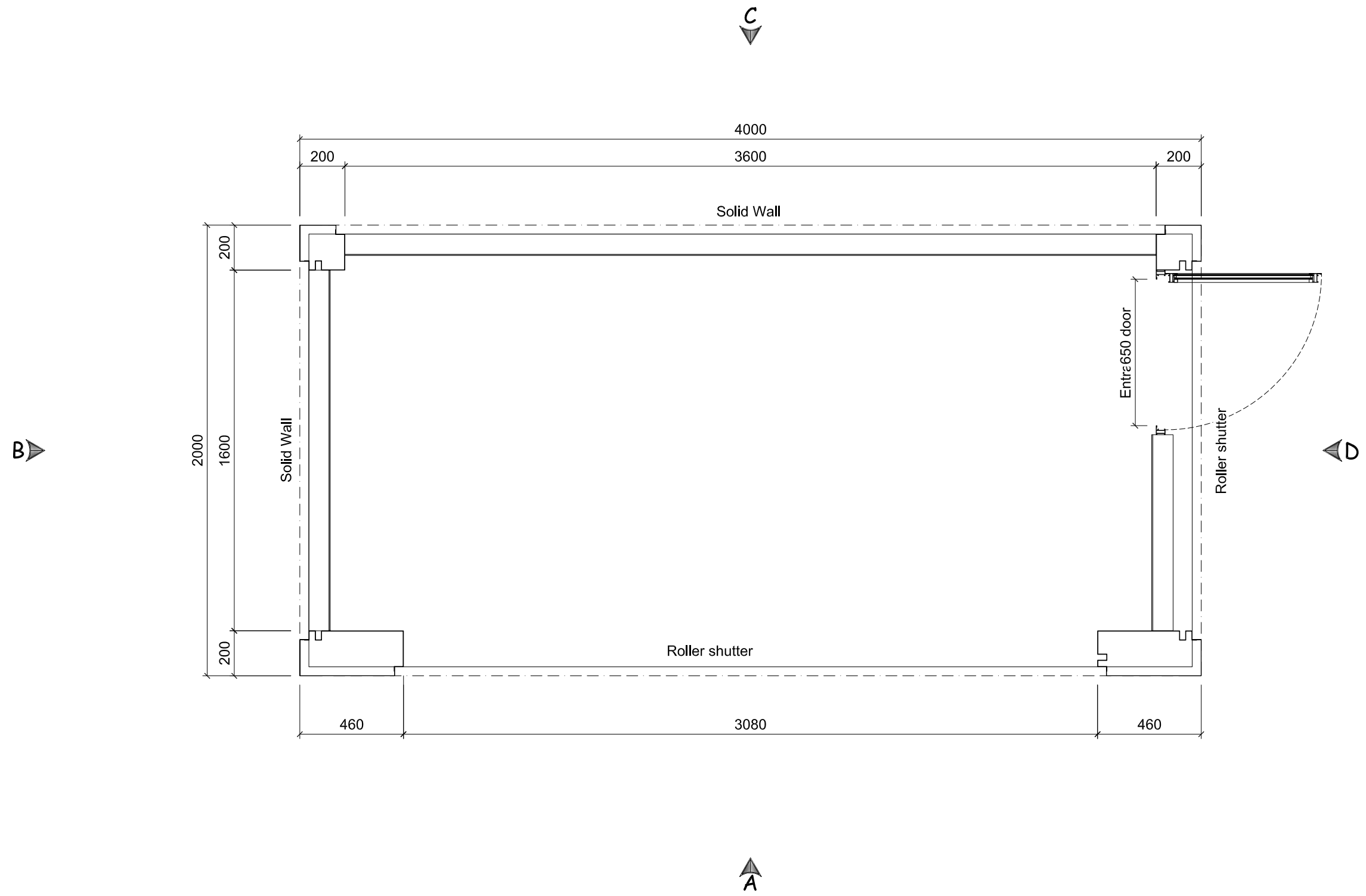
REV.   3 4 5 6 7 8 9

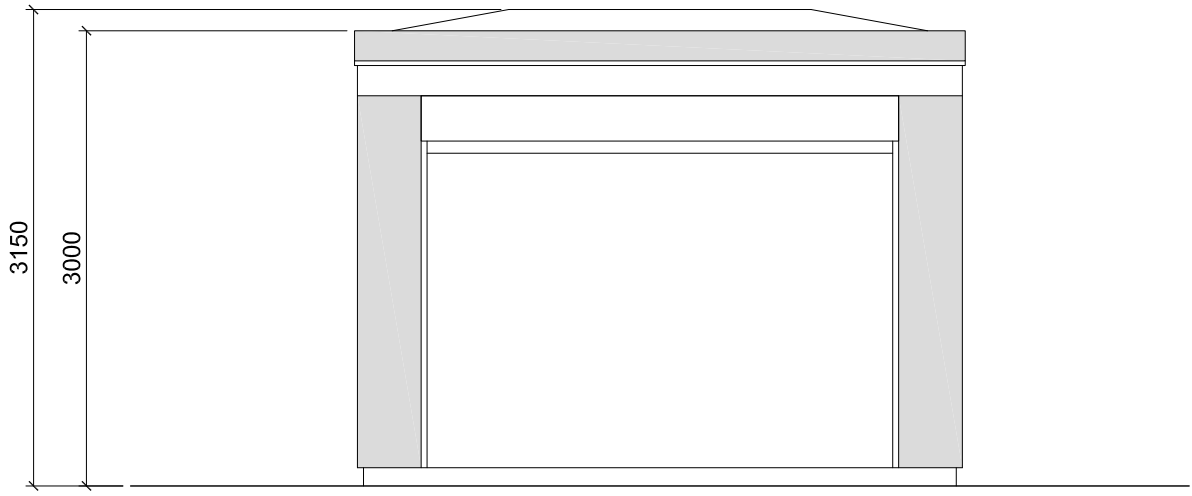
## OUTLINE DESCRIPTION

Existing unit

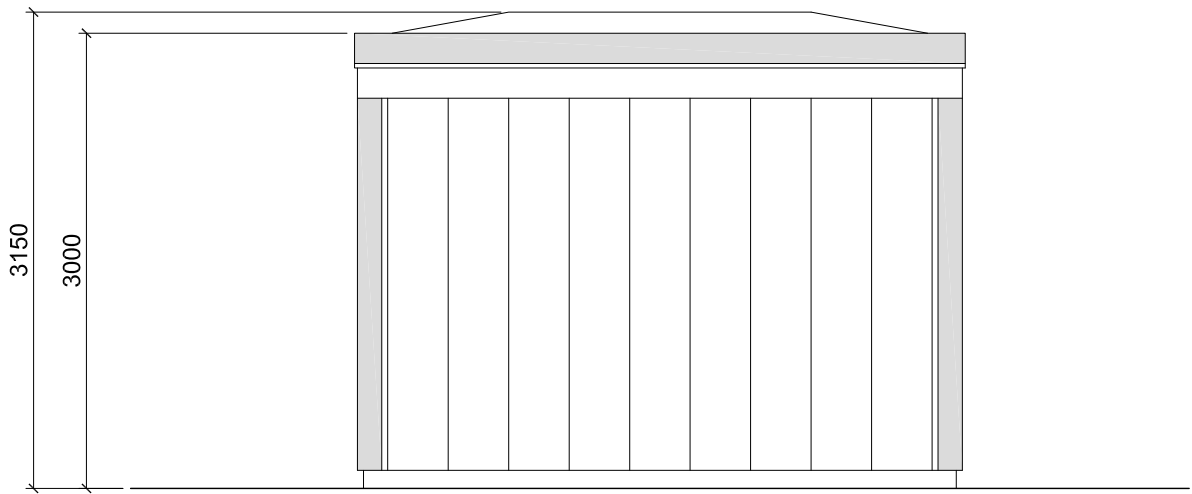
## EXTERNAL DIMENSIONS

- BODY LENGTH AT FLOOR LEVEL: **4000 mm**
- BODY WIDTH AT FLOOR LEVEL: **2000 mm**
- TOTAL FLOOR AREA: **08.00 sqm**
- OVERALL LENGTH OF ROOF: **4000 mm**
- OVERALL WIDTH OF ROOF: **2000 mm**
- TOTAL COVERED AREA: **08.00 sqm**
- HEIGHT TO ROOF APEX: **3150 mm**

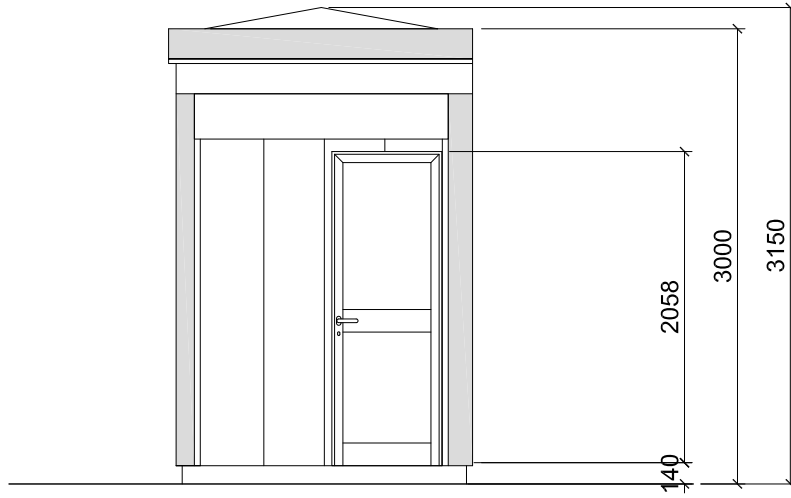




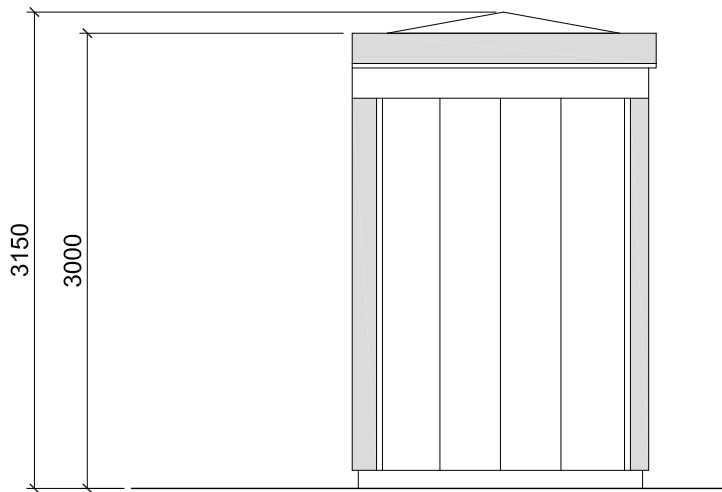
Elevation A



Elevation C



Elevation D



Elevation B