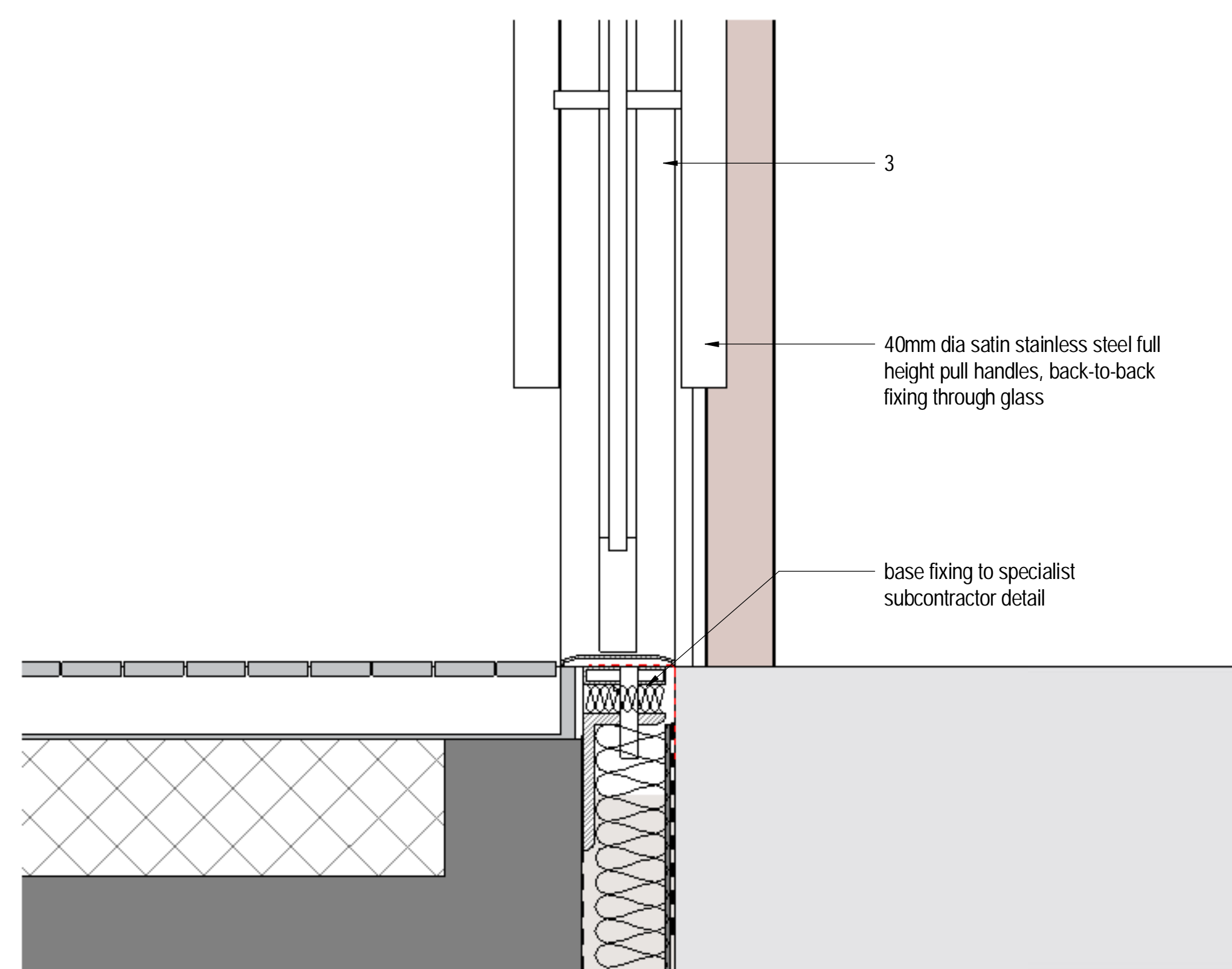
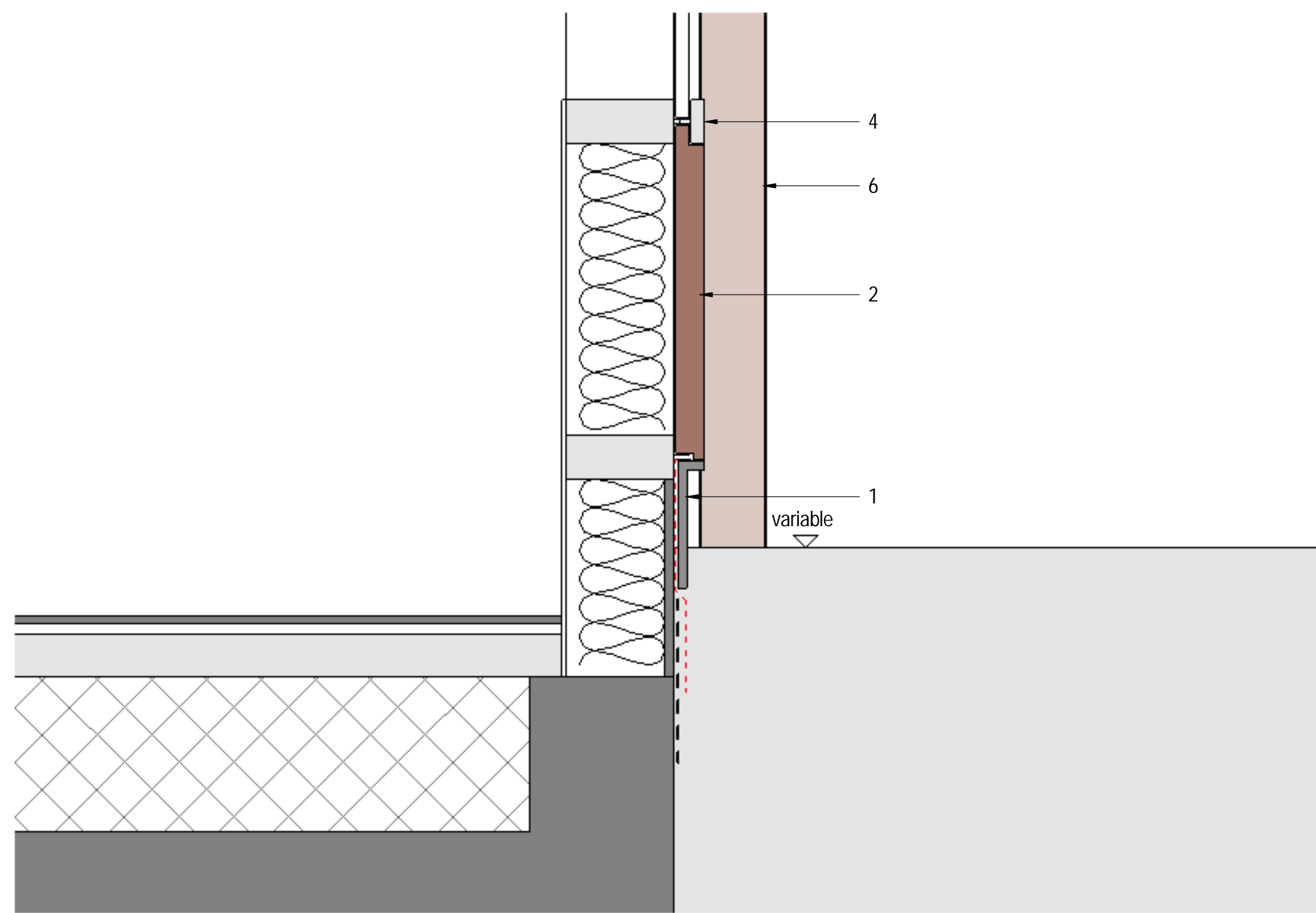


double glazed unit (8.8mm laminated outer pane, 16mm argon filled cavity, 6mm toughened inner pane)

3 7



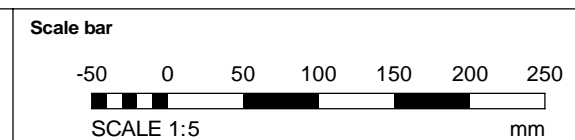
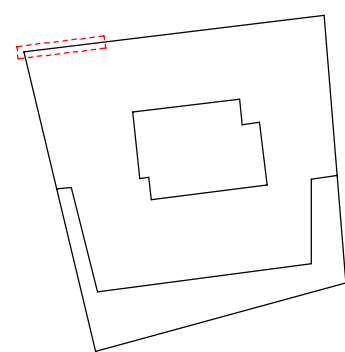
bronze anodised aluminium Anolok 547

1 1a 2 2a 4 5 6

8 Retail Unit 1 - Section HH - curtain walling
31-0002 1:5

9 Retail Unit 1 - Section JJ - entrance threshold
31-0002 1:5

Keyplan



Notes:
Do not scale off this document/drawing/model for any purposes other than those required in connection with the application for planning consent for the project.
This document/drawing/model is prepared for the sole use of EPR Architects' employer and the benefit of the employer's permitted licensees. No liability to any other persons is accepted by EPR Architects.
EPR Architects accepts no liability for any use of this document/drawing/model by parties other than the party for whom it was prepared or for purposes other than those for which it was prepared. Copyright in the design contained in this document/drawing/model remains vested in EPR Architects.

All dimensions to be verified on site

1 4mm bronze anodised aluminium skirting - Anolok 547

1a sacrificial 4mm bronze anodised aluminium skirting - Anolok 547

2 bronze anodised insulated cladding panel - Anolok 547

2a sacrificial bronze anodised insulated cladding panel - Anolok 547

3 frameless, powered glass doors

4 Schuco or similar curtain wall cladding system - Anolok 547

5 bronze anodised aluminium cladding fins - Anolok 547

6 bronze anodised aluminium perimeter cladding margin - Anolok 547

7 double glazed unit (8.8mm laminated outer pane, 16mm argon filled cavity, 6mm toughened inner pane)

P2	Issued for Planning	11.11.22	AB	AS
P1	Issued for Information	08.11.22	AB	AS
No.	Revision	Date	Initial	Chk'd

EPR Architects

30 Milbank, London SW1P 4DU
+44(0)20 79327600
www.epr.co.uk

Lincoln House
296-302 High Holborn, London WC1V 7JH

Retail Unit 1 Frontage
Proposed Shopfront Detail Sections / Materials

Scale @A1 Purpose of Issue Status code Revision
1:5 For Review and Acceptance S5 - P2

Project Code Originator Zone Level Type Role Class Number
11517 - EPR - 00 - GF - TP - A - 31-0062