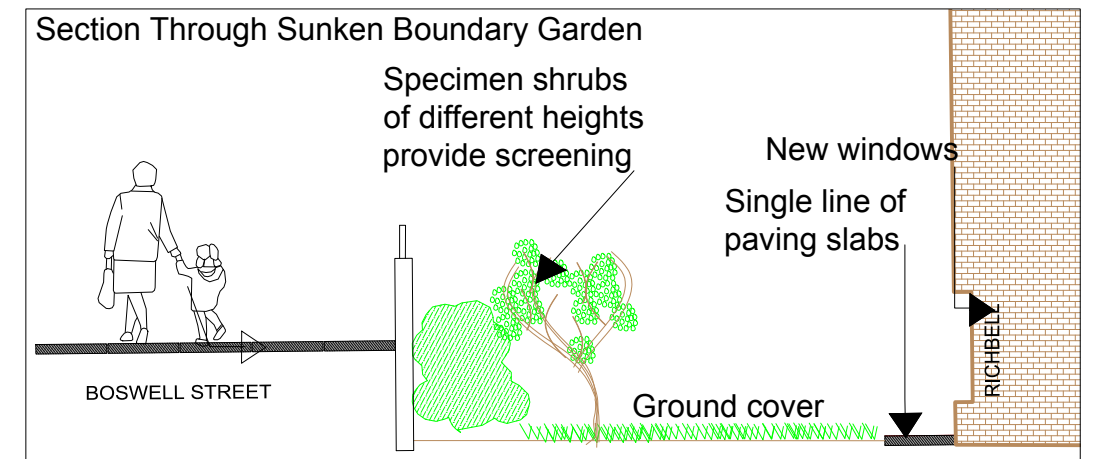
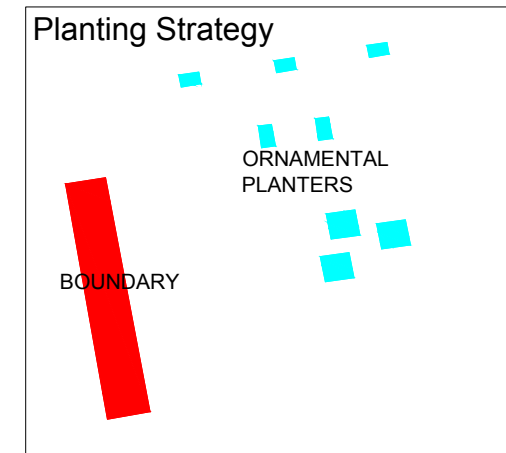
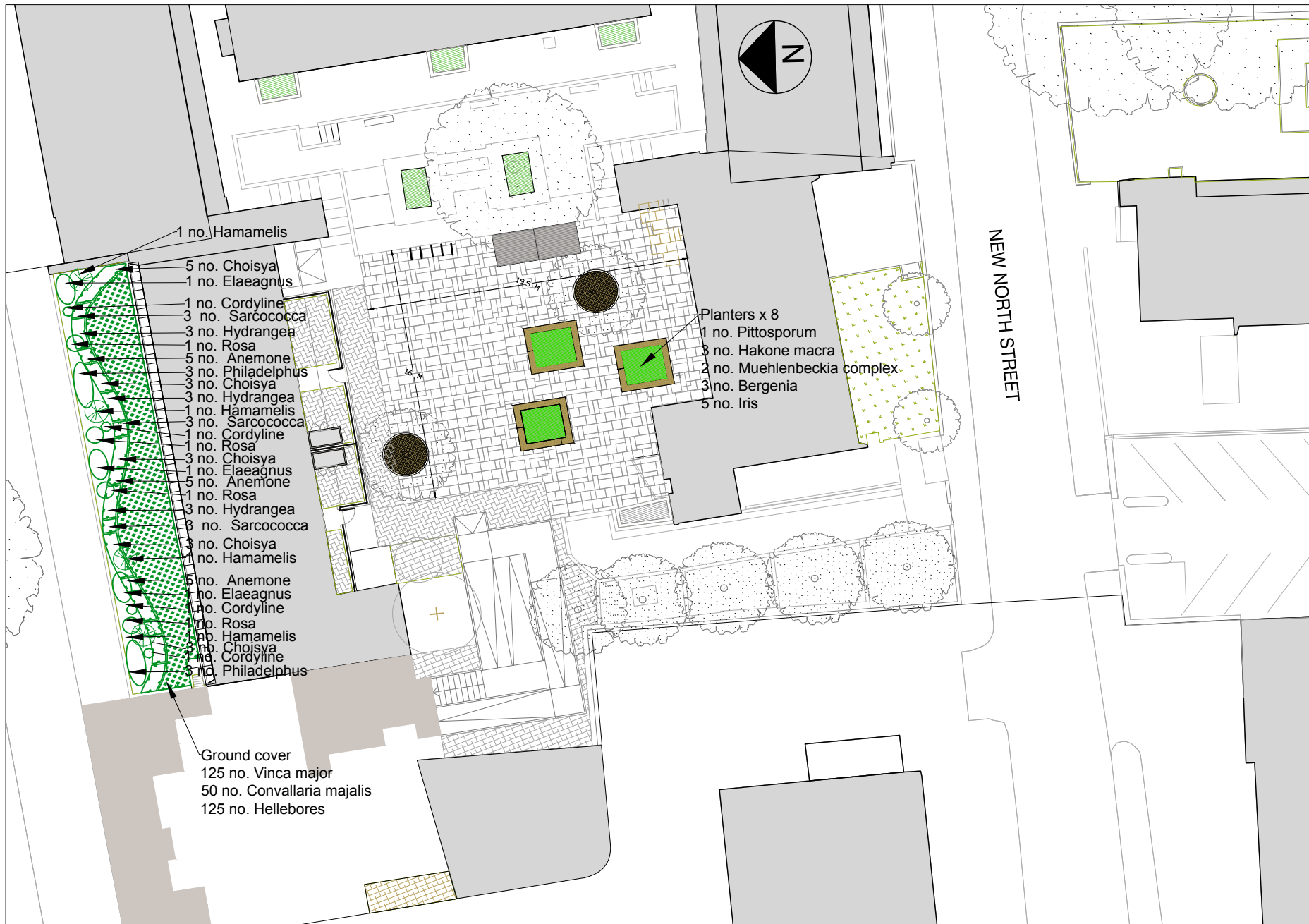


Tybalds Underbuilds - Richbell Planting Plan & Schedule



Please note;  
 All planting works to be carried out in accordance with specification 04 Tybalds Underbuilds - Blemundsbury, Richbell and Falcon Courtyards Planting Proposals and to relevant sections of BS 3936.  
 All existing trees are to be retained and protected  
 Any planting substitutes to be approved prior to ordering in writing.

Item no.	Plant Name	Size	Per M2	Quantity
<b>BOUNDARY SHRUBS</b>				
1.	Anemone x Hybrida 'Honorine Jobert'	2Lt	5 m2	25 no.
2.	Choisya Ternata	3Lt	5 m2	17 no.
3.	Cordyline	5Lt	3 m2	5 no.
4.	Elaeagnus	10Lt	1 m2	7 no.
5.	Helleborous Argutifolius	2Lt	5 m2	25 no.
6.	Helleborous niger	2Lt	5 m2	25 no.
7.	Helleborous x sternii	2Lt	5 m2	25 no.
8.	Helleborous x hybridus	2Lt	5 m2	25 no.
9.	Hydrangea Quercifolia	2Lt	1 m2	12 no.
10.	Philadelphus	10Lt	5 m2	7 no.
11.	Rosa Rambling Rector	3Lt	5 m2	5 no.

Item no.	Plant Name	Size	Per M2	Quantity
<b>PLANTERS</b>				
1.	Ballota Pseudodictamnus	2L	5m2	20 no.
2.	Bergenia 'Silberlicht'	2L	5m2	20 no.
3.	Hakone macra	2L	5m2	20 no.
4.	Muehlenbeckia complex	2L	5m2	20 no.
5.	Iris Foetidissima	2L	5m2	20 no.
6.	Pittosporum tenuifolium	2L	5m2	7 no.

Tybalds Underbuilds - Richbell Planting Plan & Schedule  
 Drawing no. LL07/ Scale as shown at A3  
 Date 14th November 2022

