

# Infill Facing Brickwork

## STANDARD BOND

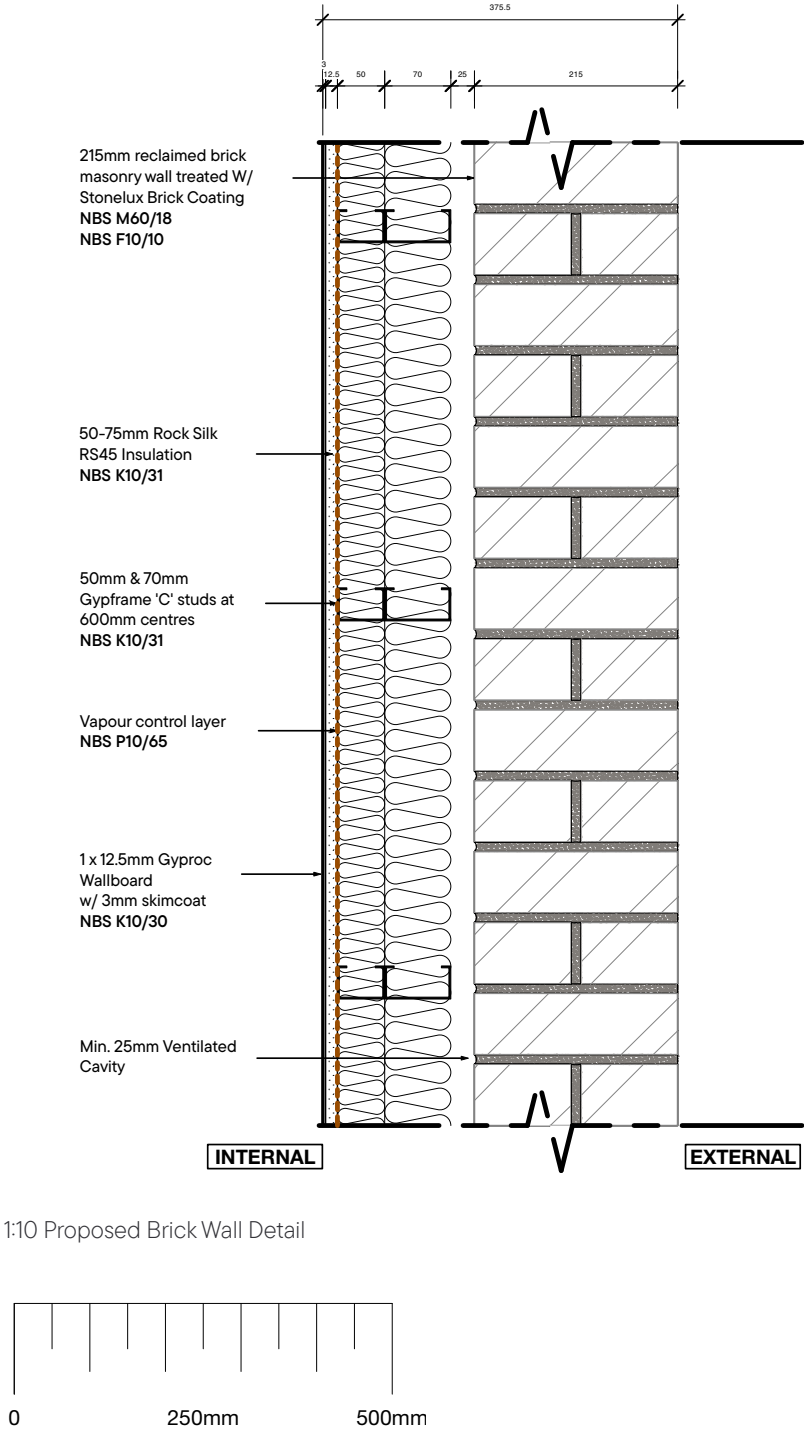
Infill reclaimed brickwork to match existing.

Infill brickwork is treated with Stonelux Brick Coating, Light Buff.

Product website:  
[www.stonelux-stone-effect-paints.myshopify.com/products/brick-paint](http://www.stonelux-stone-effect-paints.myshopify.com/products/brick-paint)

Flush pointed with mortar specified to match existing conditions create an uninterrupted connection with existing wall sections.

**NOTE**  
Sample area of facing brick finish to be provided as part of finished works if required.



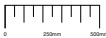
Masonry coating product



Reclaimed brickwork to match existing



1:40 Proposed Detail Elevation (see 1:10 detail on p.38)



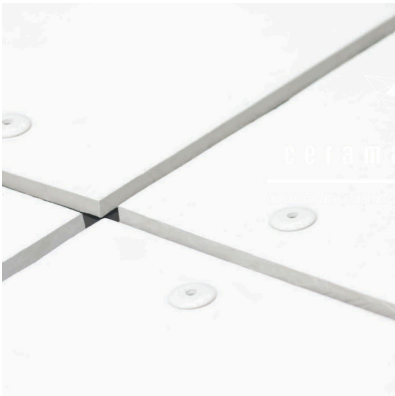
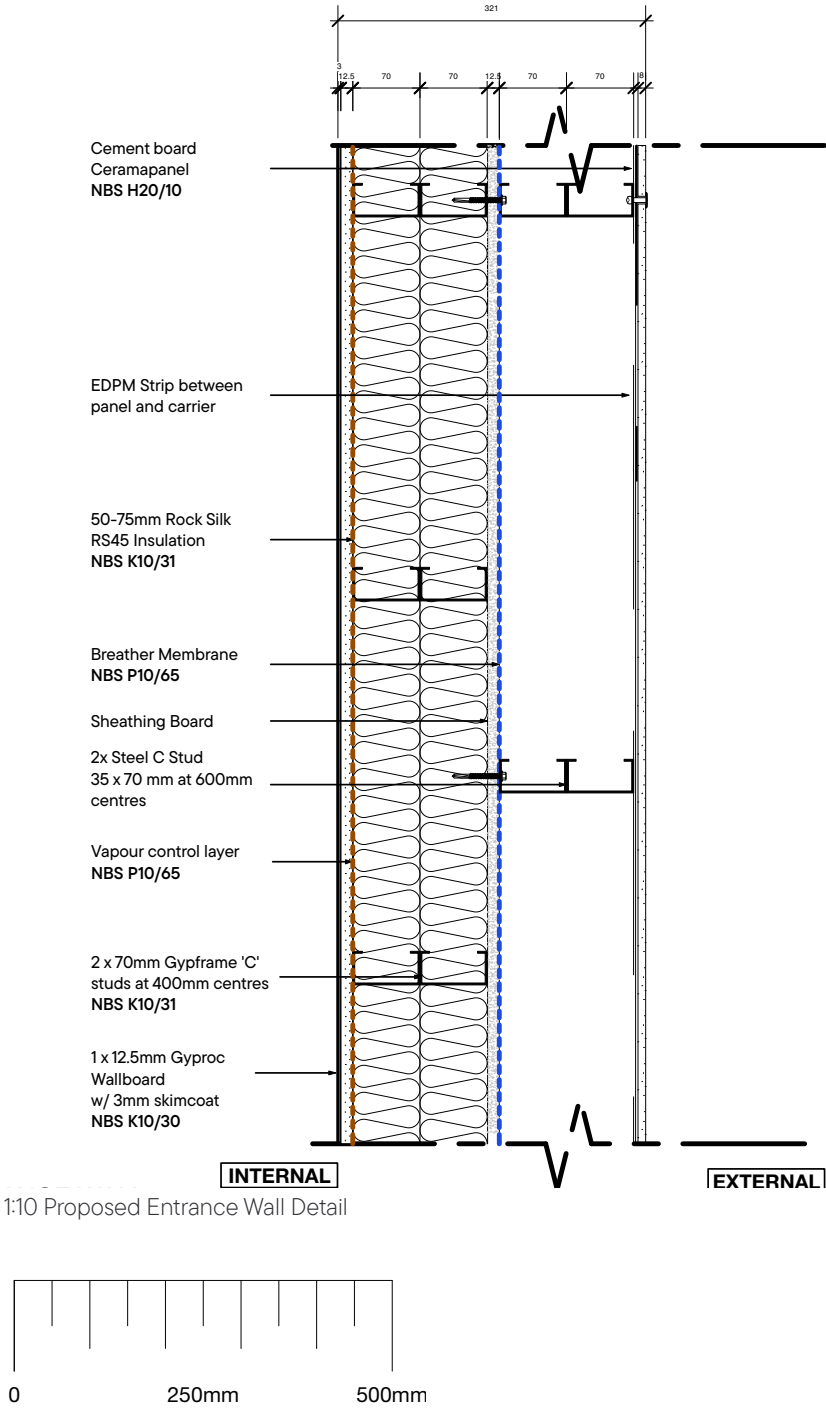
# Fibre Cement Board

Manufacturer:  
Fairview Europe Ltd T/A Valcan

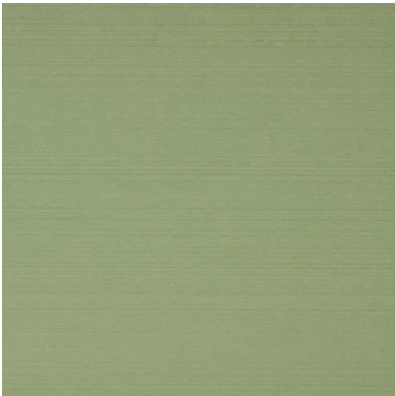
Product:  
Ceramapanel Vitrafix Secret Fix  
System -A1 Natural Textures Raw

Finish / Colour:  
1061 Eucalyptus

Product website:  
[www.valcan.co.uk/product/ceramapanel/](http://www.valcan.co.uk/product/ceramapanel/)



VALCAN Rivet Fix fixing method

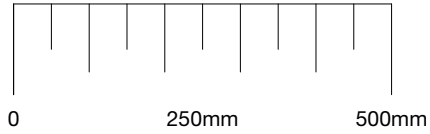


VALCAN Ceramapanel Finish



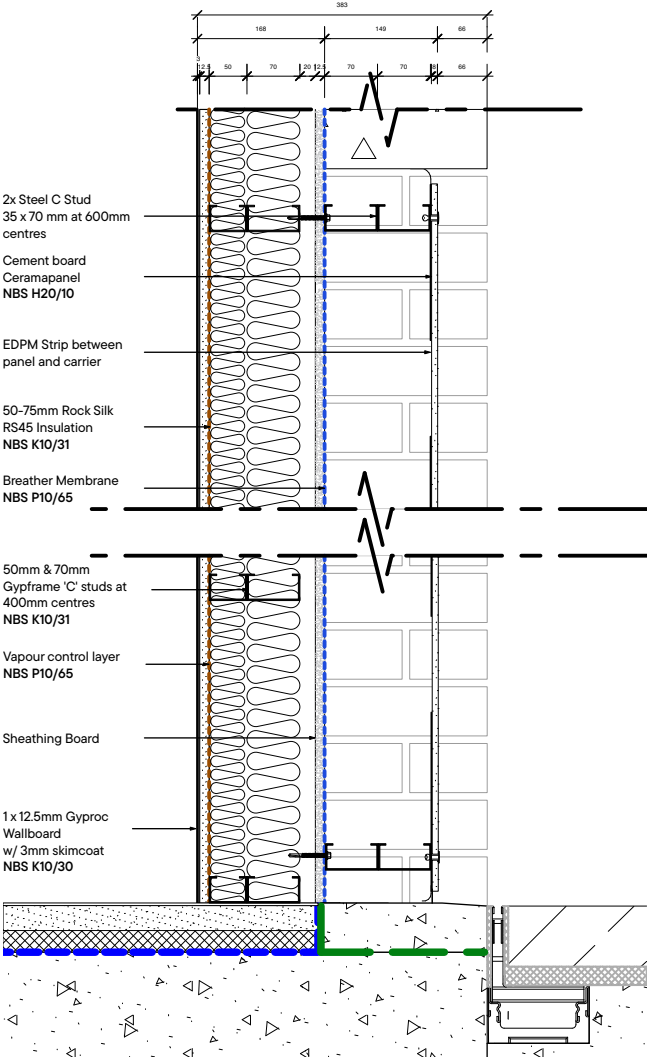
1:40 Proposed Detail Elevation (see 1:10 detail on p.38)

Fibre Cement Board

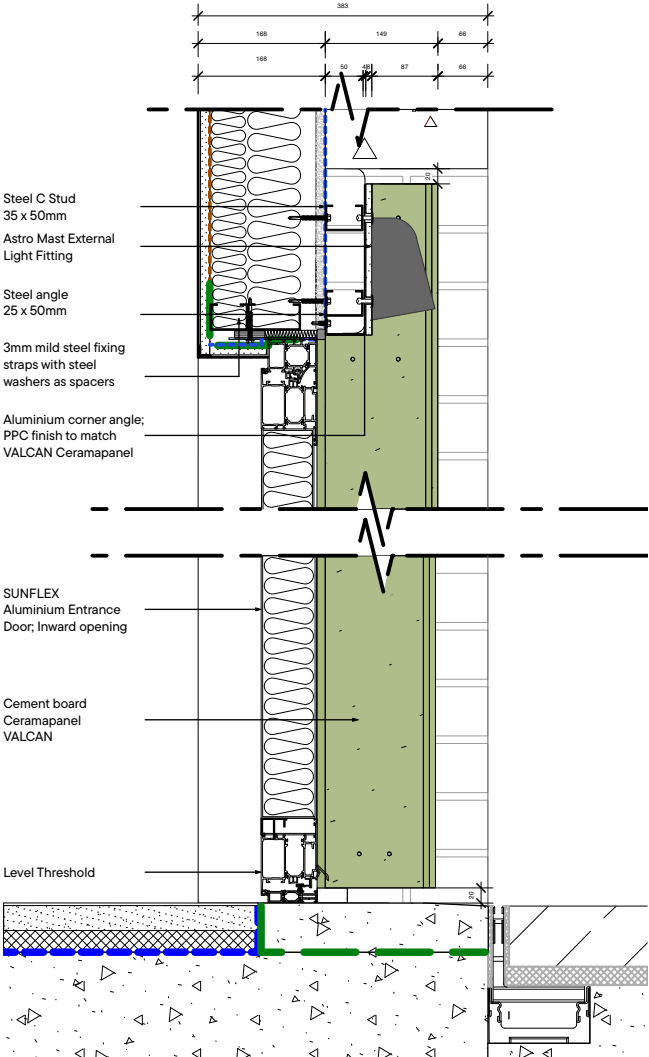


1:10 Proposed Entrance Detail Elevation

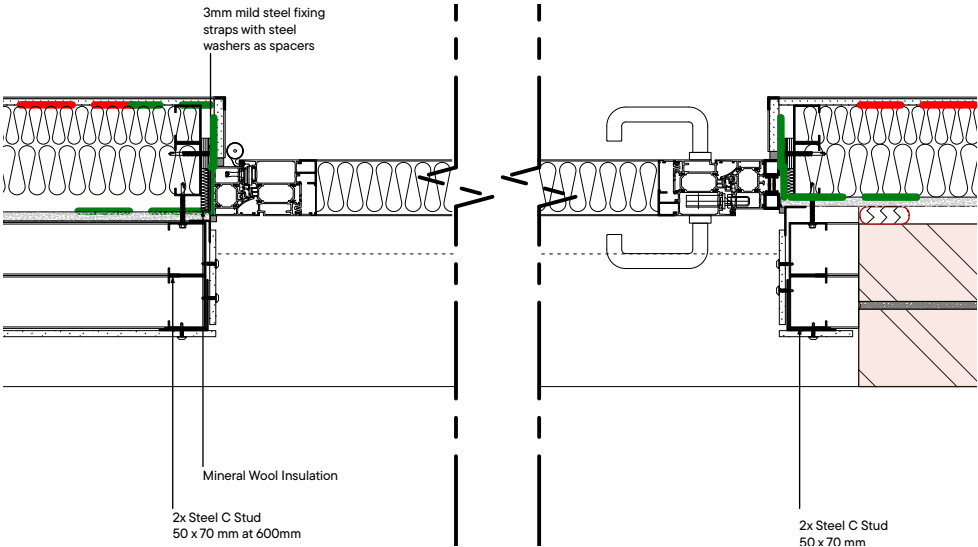
Fibre Cement Board



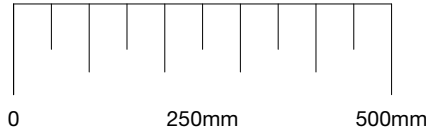
Proposed Entrance Cladding Head & Base Detail 1:10



Proposed Entrance Door Section 1:10



Proposed Entrance Door Plan Detail 1:10



## 6 CCTV & Lighting Strategy

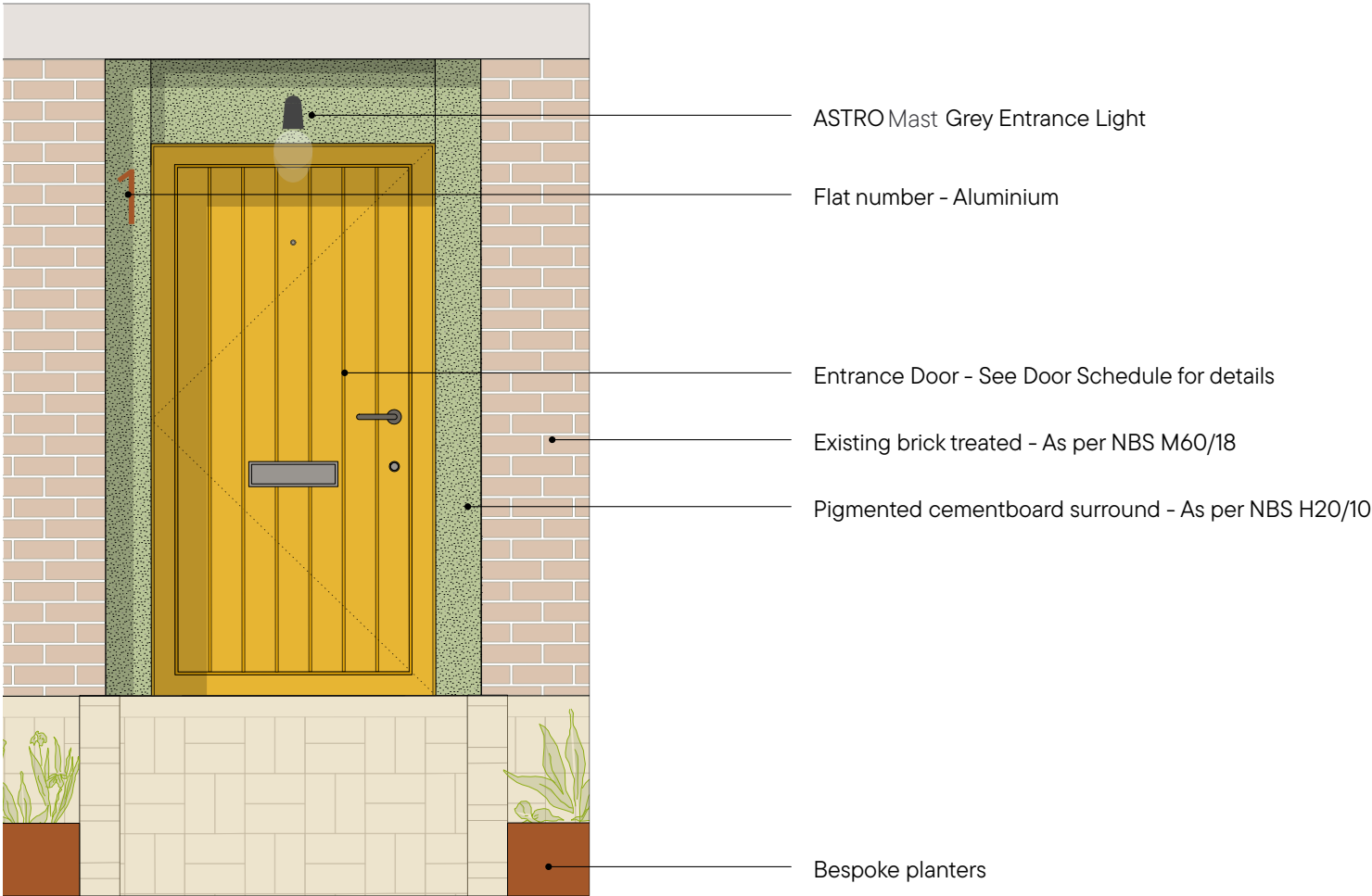
# CCTV & Lighting Strategy

CCTV is not proposed for this phase of estate works.

Lighting strategy for the Underbuilds is limited to the installation of one outdoor light fitting per flat entrance door.

Specified Product:  
ASTRO Mast Textured Grey 1317007, Aluminium fitting

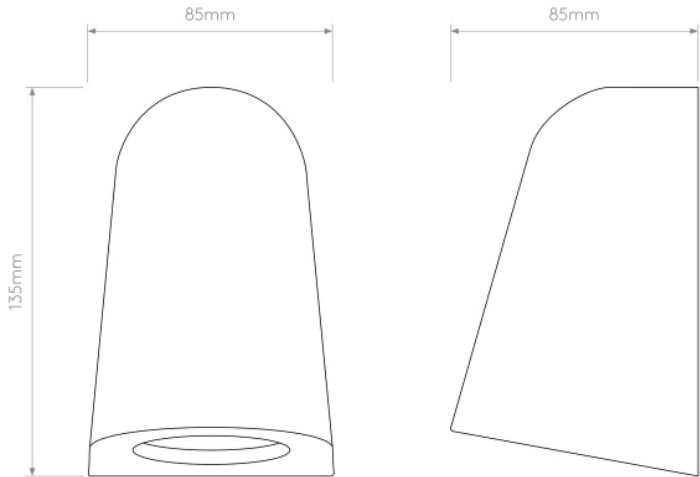
Product website:  
[www.astrolighting.com/products/1317007-mast-light](http://www.astrolighting.com/products/1317007-mast-light)



Proposed typical flat entrance elevation (not to scale)



Proposed light fitting



Matthew Lloyd Architects

1B The Hangar  
Perseverance Works  
38 Kingsland Road  
London E2 8DD

+44 (0) 20 7613 1934  
[mail@matthewlloyd.co.uk](mailto:mail@matthewlloyd.co.uk)