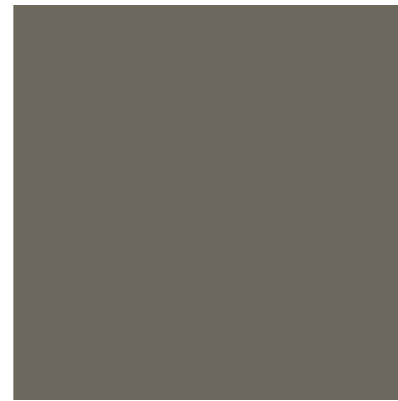


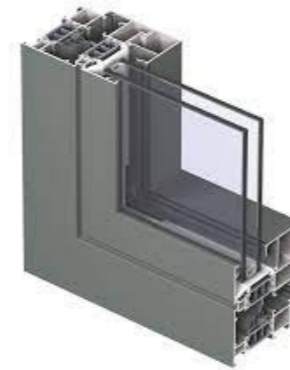
# Window/ Door Details

Reynaers Concept System 77  
aluminium glazed windows and  
doors

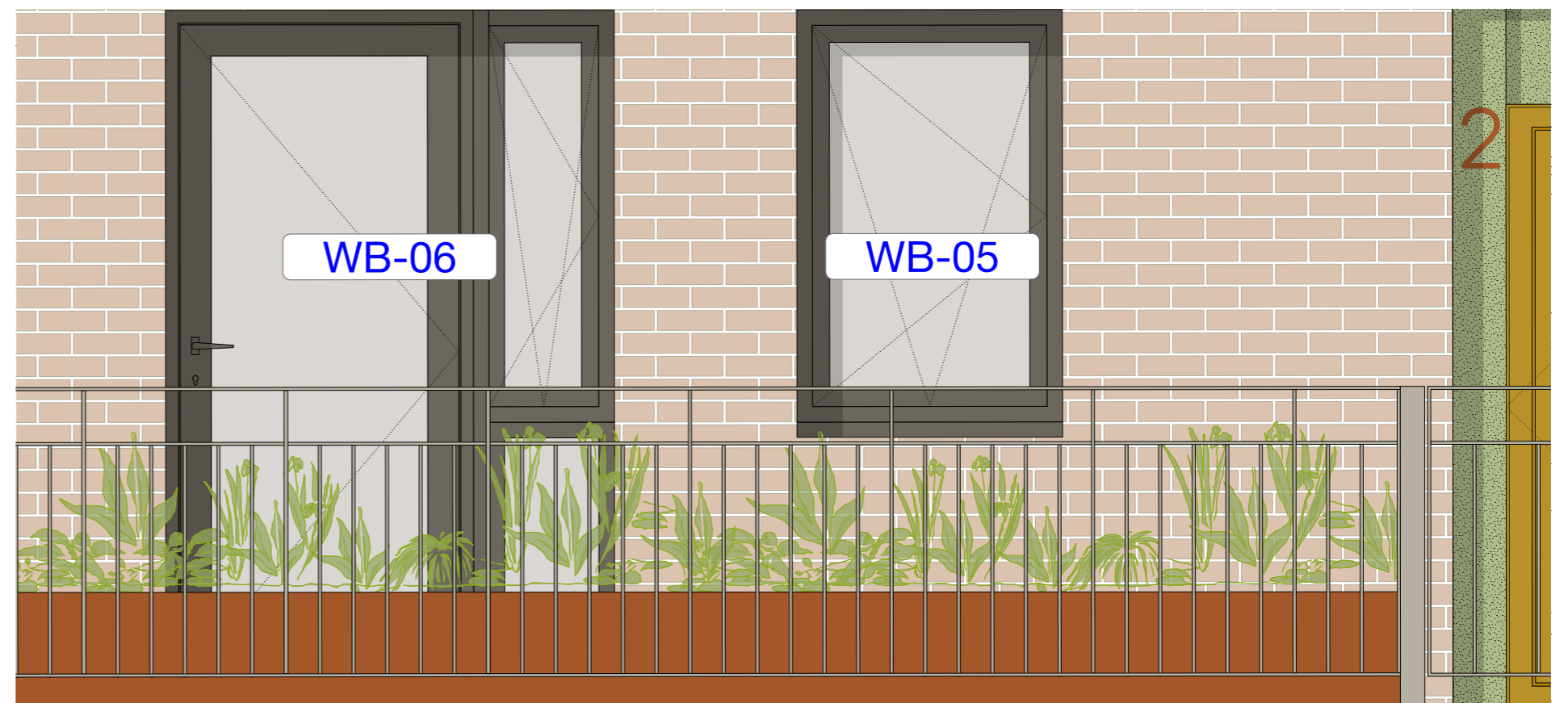
Window size vary. Please refer  
to Window Schedule (TE-700,  
TE-701, TE-702, TE-703) for full  
range of sizes.



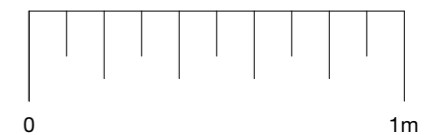
RAL 7039 Quartz Grey



Reynaers Concept System 77



1:20 Proposed aluminium elements - typical glazed window and door



# Window Details

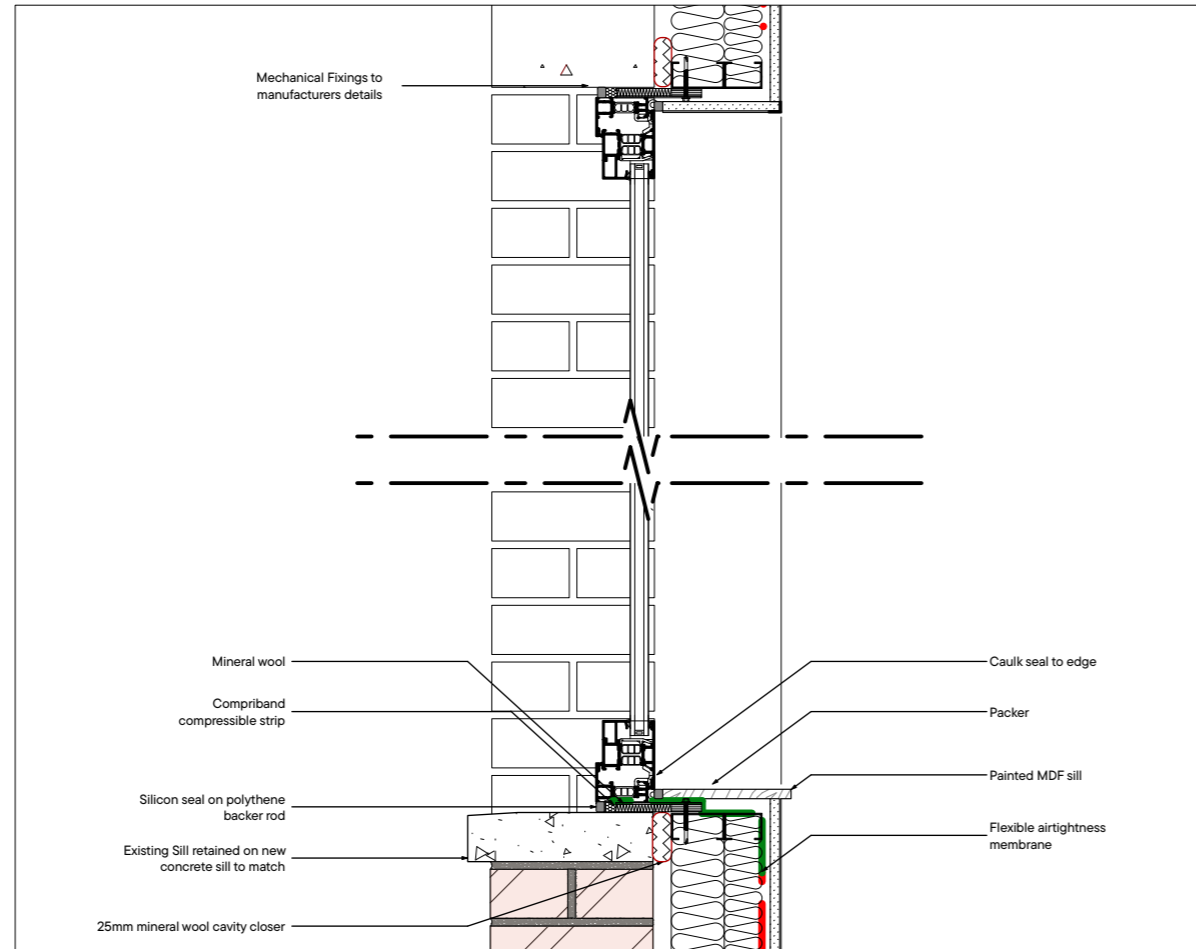
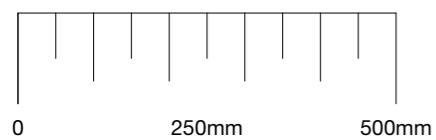
TYPICAL 1:10

Window size vary. Please refer to Window Schedule for full range of sizes.

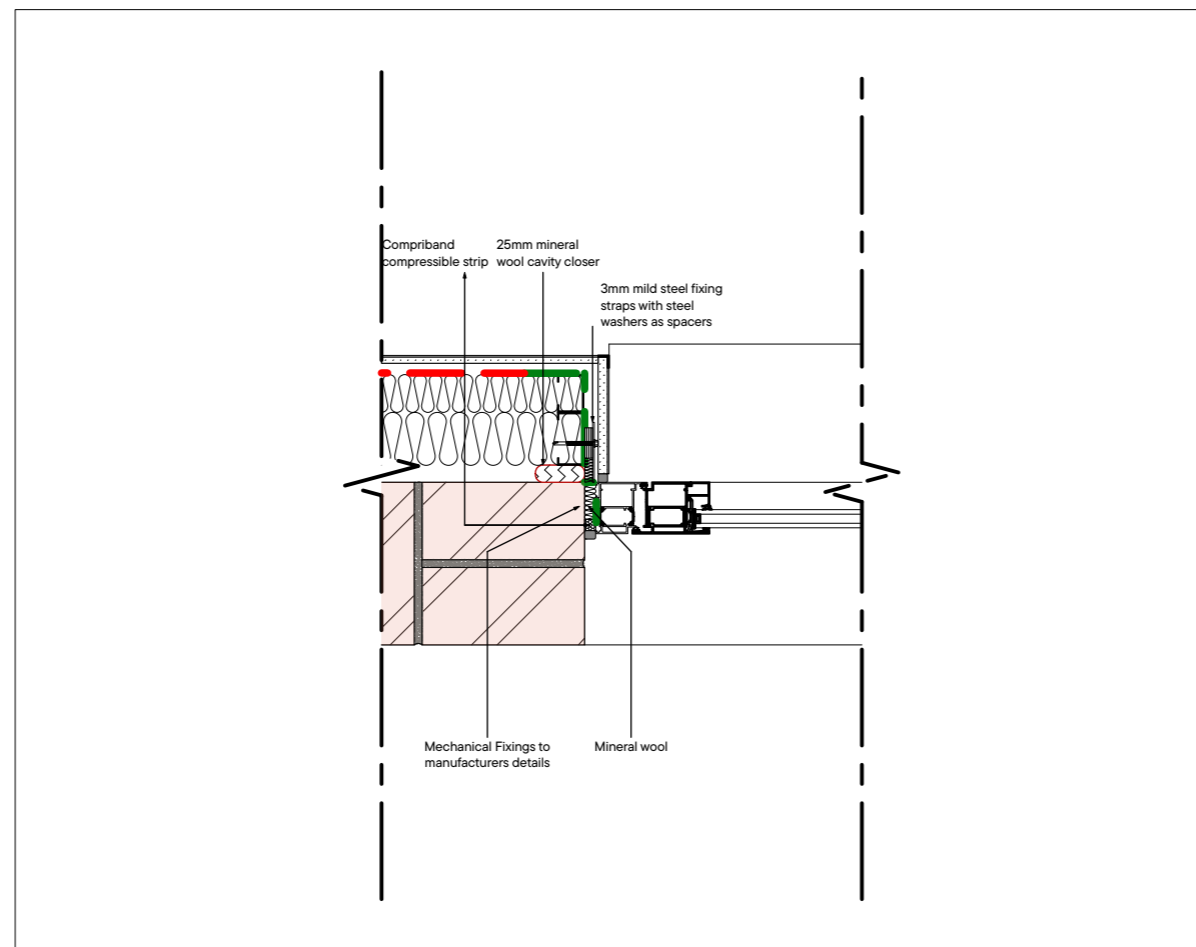
The details shown here relate to the following windows:  
 WT01, WT02, WT03, WT04,  
 WT05, WT06, WT07, WT09,  
 WT10, WT11, WT12, WT13, WT14,  
 WT15, WT16.

Product reference:  
 Reynaers Aluminium Window  
 CS 77 Concept System (Double  
 glazed)

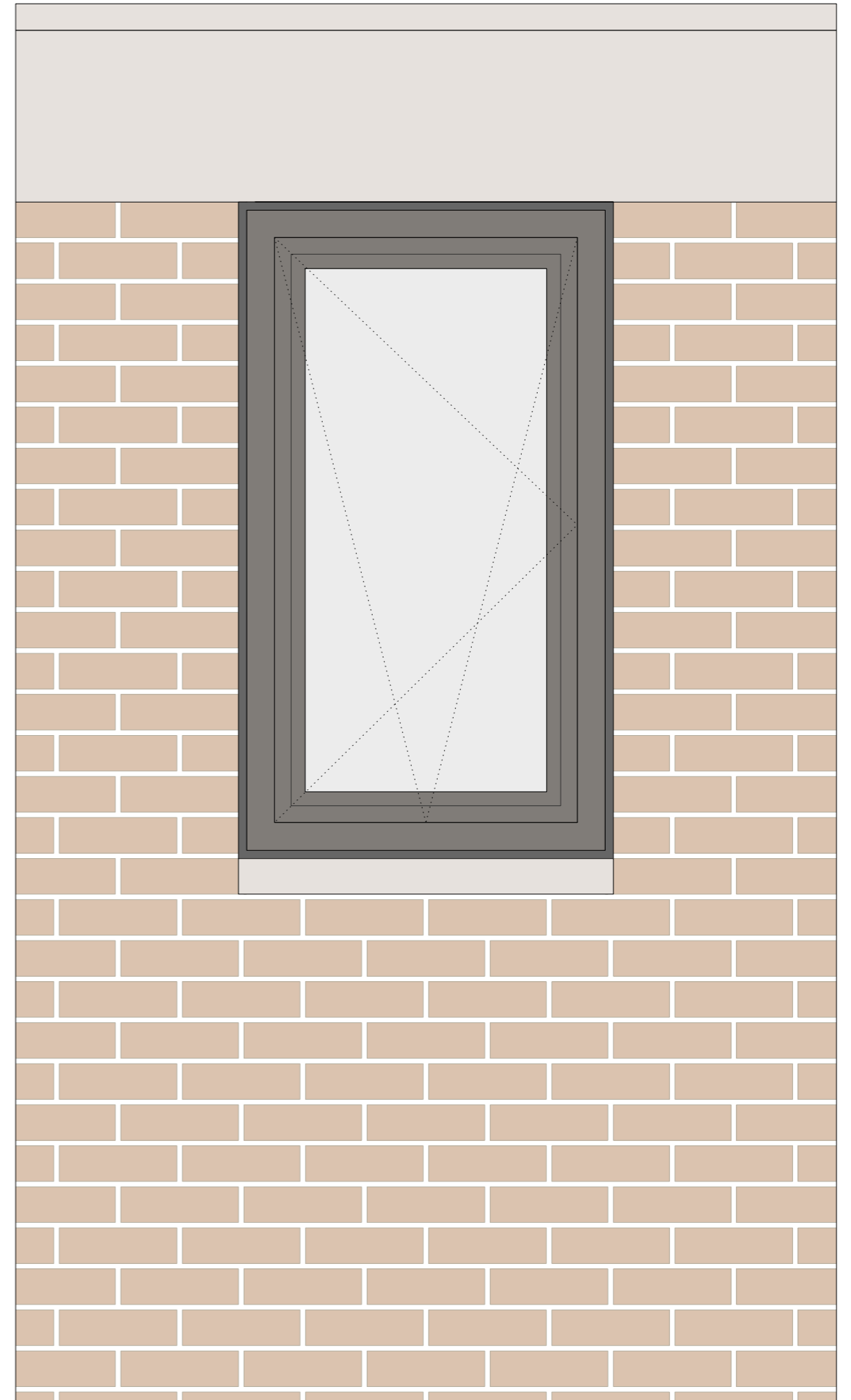
Finish:  
 PCC RAL 7039 Quartz Grey;  
 matt



1:10 Typical Head and Sill Detail



1:10 Typical Plan Detail



1:10 Typical Elevation Detail

# Window/ Door Details

TYPICAL 1:10

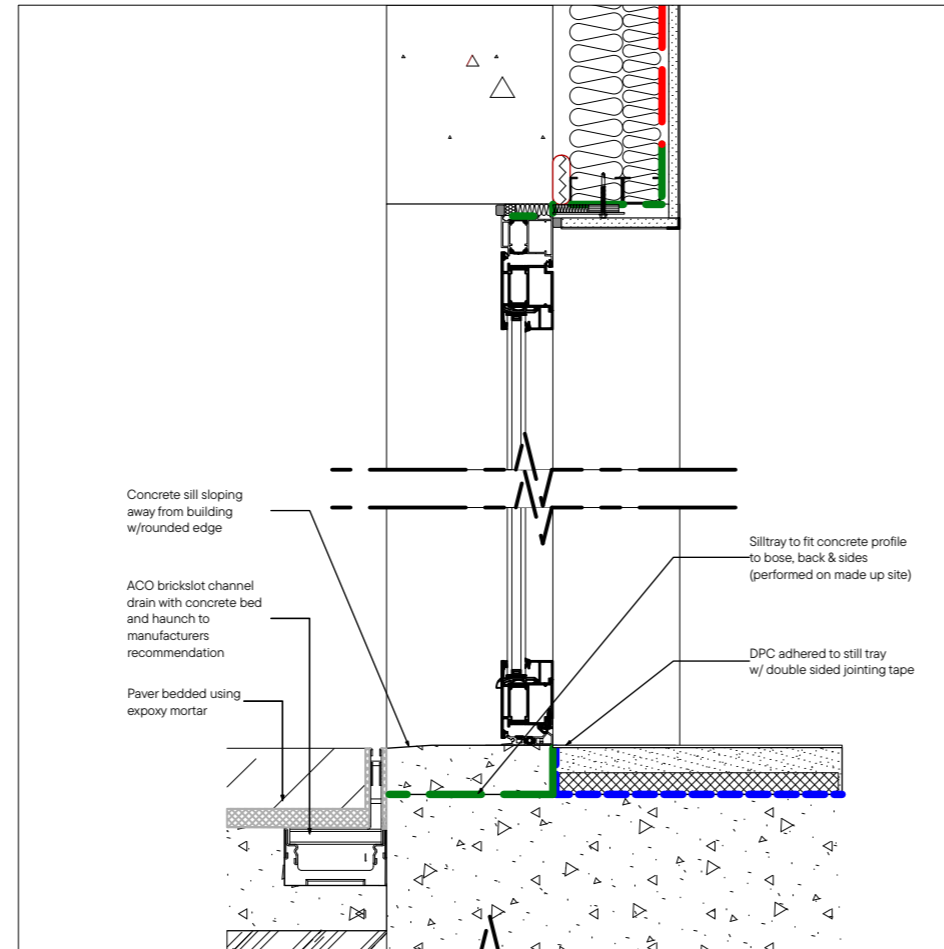
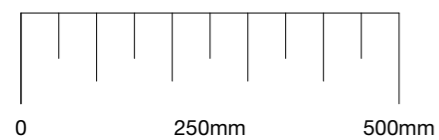
Window/ Door sizes vary. Please refer to Window Schedule for full range of sizes.

The details shown here relate to the following window/ doors: WT08, WT09

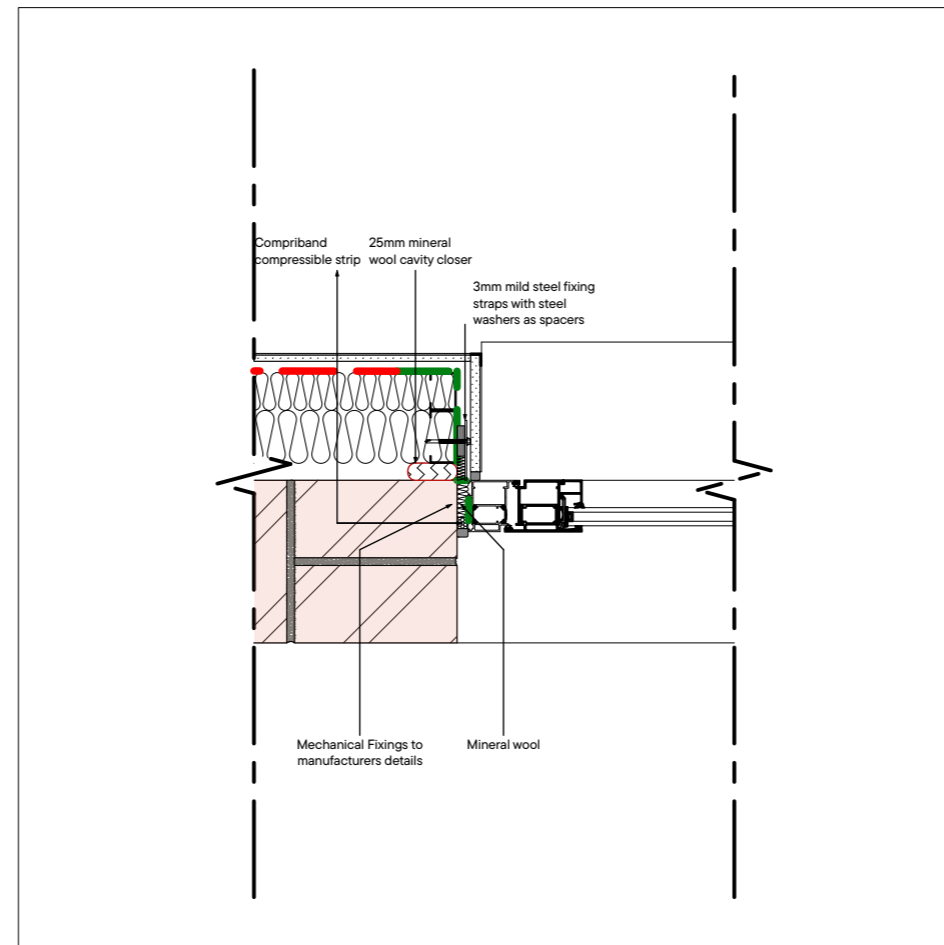
Product reference:  
Reynaers Aluminium Window CS 77 Concept System (Double glazed)

Finish:  
PCC RAL 7039 Quartz Grey;  
matt

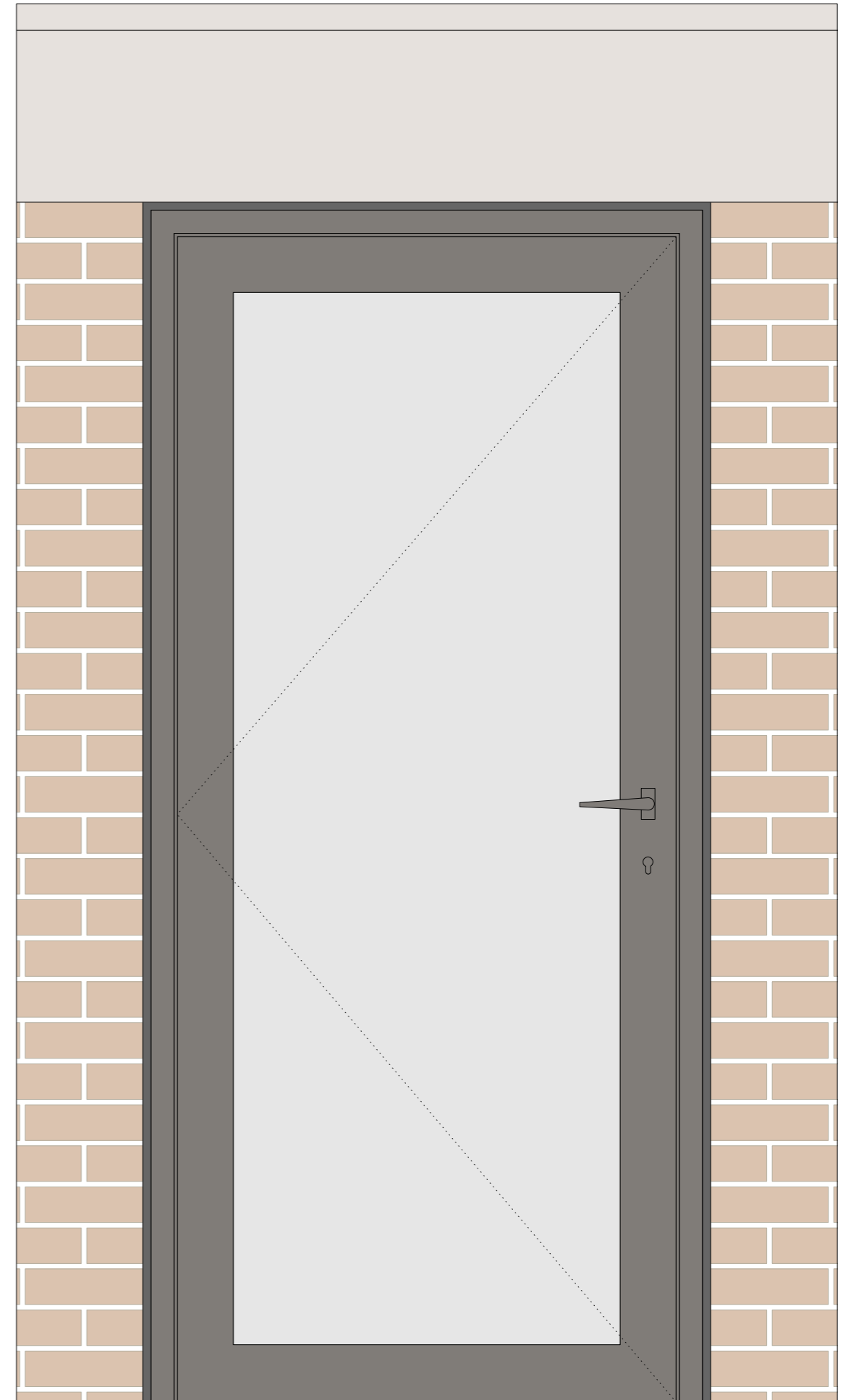
Product website:  
[www.reynaers.co.uk/products/aluminium-windows/conceptsystem-77](http://www.reynaers.co.uk/products/aluminium-windows/conceptsystem-77)



1:10 Typical Section Detail

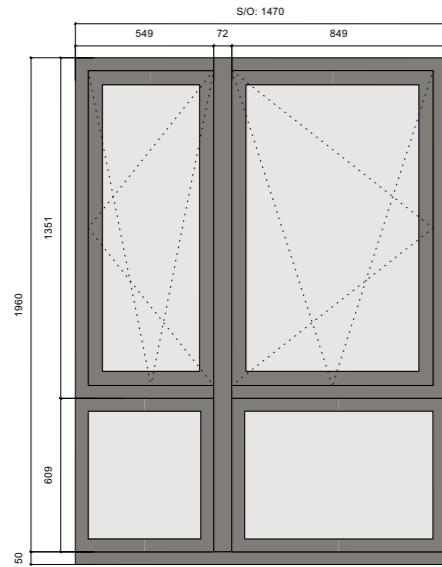


1:10 Typical Plan Detail

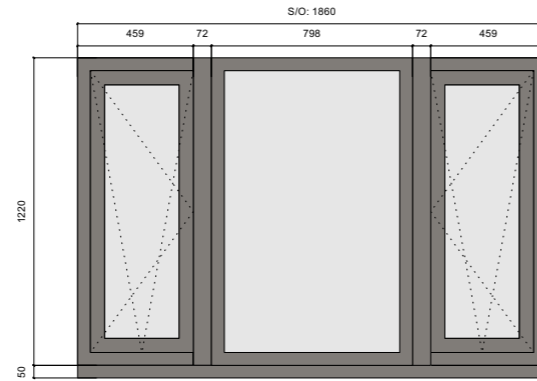


1:10 Typical Elevation Detail

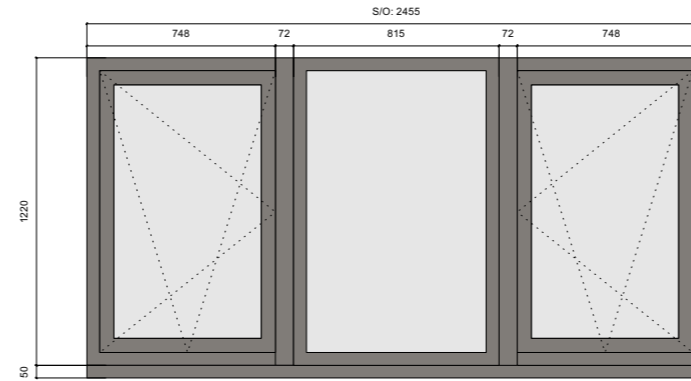
WT01



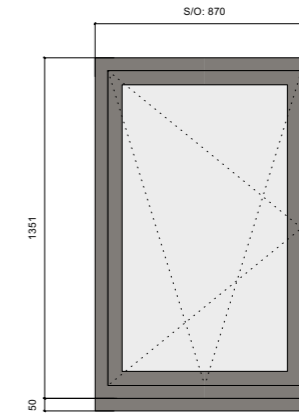
WT02



WT03



WT04



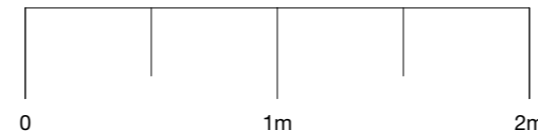
REF	WB-01; WB-04; WR-04; WR-05; WF-08	WB-22; WB-25; WB-28; WB-31	WB-17; WB-29	WB-02; WB-05; WB-07; WB-08; WB-10; WB-11; WB-13; WR-01; WR-02; WR-06; WR-07; WR-08; WF-05
LOCATION	UB.1.1; UB.2.1; UR.1.4; UR.2.1; UF.3.4	UB.1.6; UB.2.6; UB.3.6; UB.4.3; UB.4.6; UB.5.1	UB.1.3; UB.2.3; UB.3.3; UB.5.3	UB.1.3, 2.3, 3.1, 3.3, 4.1, 4.3, 5.1; UR.1.1, 1.2, 1.9, 2.3, 2.4, 2.5; UF.3.9
MATERIAL	Aluminium with double glazing	Aluminium with double glazing	Aluminium with double glazing	Aluminium with double glazing
WINDOW SIZE	1960 x 1470mm; top panes tilt and turn inwards; middle pane fixed, bottom panes fixed	1220 x 1860mm; tilt and turn inwards; middle pane fixed	1220 x 2455mm; tilt and turn inwards; middle pane fixed	1351 x 870mm; tilt and turn inwards
PRODUCT NAME	Reynaers Concept System 77 aluminium window (CS77 LTH)	Reynaers Concept System 77 aluminium window (CS77 LTH)	Reynaers Concept System 77 aluminium window (CS77 LTH)	Reynaers Concept System 77 aluminium window (CS77 LTH)
FINISH	RAL 7039 Quartz Grey; matt	RAL 7039 Quartz Grey; matt	RAL 7039 Quartz Grey; matt	RAL 7039 Quartz Grey; matt
HINGES	As per manufacturer	As per manufacturer	As per manufacturer	As per manufacturer
HANDLE	As per manufacturer	As per manufacturer	As per manufacturer	As per manufacturer
LOCK	As part of handle	As part of handle	As part of handle	As part of handle
ACCESSORIES	Friction Stay & Restriction	Friction Stay & Restriction	Friction Stay & Restriction	Friction Stay & Restriction
NOTES				

Notes:

- Do not scale from this drawing.
- All dimensions to be verified prior to the commencement of any work or the production of any shop drawings.
- Matthew Lloyd Architects (MLA) shall be notified in writing of any discrepancies.
- Survey and boundaries indicative only.
- Proposals are subject to utilities surveys and specialist consultants' input & coordination.
- Any areas indicated are approximate and indicative only.
- Where an item is covered by drawings in different scales the larger scale drawing is to be worked to.
- Drawing to be read in conjunction with relevant consultant's drawings and specifications.
- Where MLA services on a project do not include for site inspections and work surveys, MLA do not warrant that 'as built' issue drawings are a complete and accurate record of what has been built.
- MLA shall not be liable for the consequences of any use, misuse or variation of this drawing for any purpose other than that for which it was originally prepared.
- This title block is copyright of MLA and should not be used, removed, or altered without permission and clear identification.

Revisions: 1 29/07/2022 Issued for tender.

NOTES:  
 1. TO BE READ IN CONJUNCTION WITH ALL RELEVANT NBS CLAUSES  
 2. EXACT MEASUREMENTS OF WINDOWS ARE SUBJECT TO SITE SURVEY



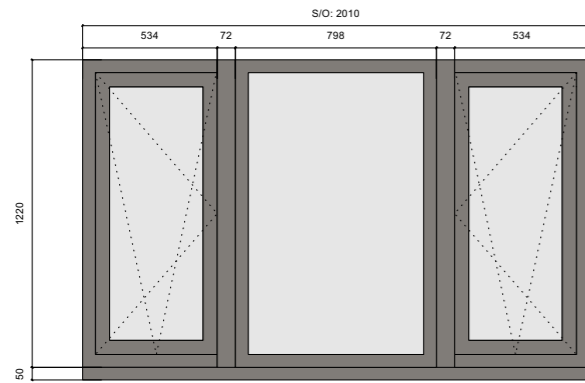
TENDER  
 Client

Original Sheet Size  
**A3**

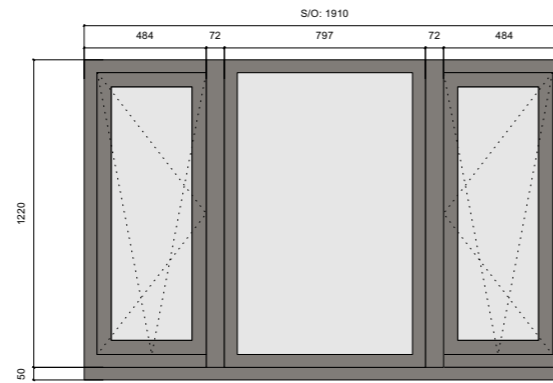
Matthew Lloyd Architects  
 1b The Hangar  
 Perseverance Works  
 38 Kingsland Road  
 London E2 8DD  
 T 020 7613 1934  
 email: mail@matthewlloyd.co.uk  
 www.matthewlloyd.co.uk

Date: Oct-22	Scale: 1:30 @ A3	Checked by: ASp	Drawn by: EV
Project: TYBALDS ESTATE CAMDEN			
Drawing title: PROPOSED WINDOW SCHEDULE - 1/4			
Reference: TE	Dwg No: 700	Rev: T03	

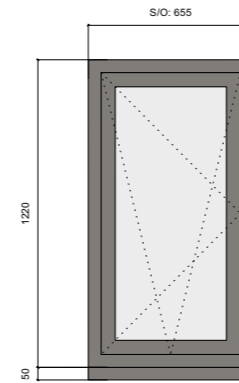
WT05



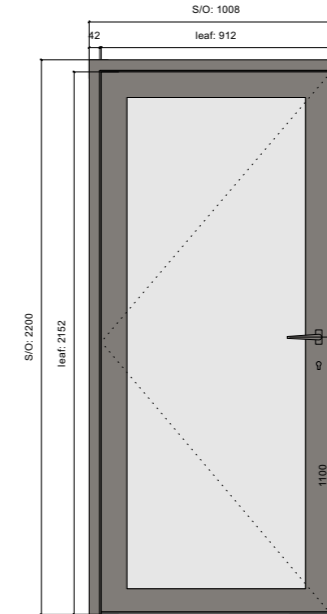
WT06



WT07



WT08 (door)



REF	WF-10; WF-14; WF-16; WF-17	WR-09; WR-12; WR-13; WR-16	WR-11; WR-14	WB-03
LOCATION	UF.1,3, 15, 2,4, 3,7,3,8	UR.1,5; UR.1,9; UR.2,5; UR.2,9	UR.2,8; UR.16	UB.1,3
MATERIAL	Aluminium with double glazing	Aluminium with double glazing	Aluminium with double glazing	Aluminium with double glazing
WINDOW SIZE	1220 x 2010mm; tilt and turn inwards; middle pane fixed	1220 x 1910mm; tilt and turn inwards; middle pane fixed	1220 x 655mm; tilt and turn inwards	2200 x 1008mm; openable outwards
PRODUCT NAME	Reynaers Concept System 77 aluminium window (CS77 LTH)	Reynaers Concept System 77 aluminium window (CS77 LTH)	Reynaers Concept System 77 aluminium window (CS77 LTH)	Reynaers Concept System 77 aluminium glazed door (CS77 LTH)
FINISH	RAL 7039 Quartz Grey; matt	RAL 7039 Quartz Grey; matt	RAL 7039 Quartz Grey; matt	RAL 7039 Quartz Grey; matt
HINGES	As per manufacturer	As per manufacturer	As per manufacturer	As per manufacturer
HANDLE	As per manufacturer	As per manufacturer	As per manufacturer	As per manufacturer
LOCK	As part of handle	As part of handle	As part of handle	As part of handle
ACCESSORIES	Friction stay & restriction	Friction stay & restriction	Friction stay & restriction	Friction stay & restriction
NOTES				Flush threshold

Notes:

- Do not scale from this drawing.
- All dimensions to be verified prior to the commencement of any work or the production of any shop drawings.
- Matthew Lloyd Architects (MLA) shall be notified in writing of any discrepancies.
- Survey and boundaries indicative only.
- Proposals are subject to utilities surveys and specialist consultants' input & coordination.
- Any areas indicated are approximate and indicative only.
- Where an item is covered by drawings in different scales the larger scale drawing is to be worked to.
- Drawing to be read in conjunction with relevant consultant's drawings and specifications.
- Where MLA services on a project do not include for site inspections and work surveys, MLA do not warrant that 'as built' issue drawings are a complete and accurate record of what has been built.
- MLA shall not be liable for the consequences of any use, misuse or variation of this drawing for any purpose other than that for which it was originally prepared.
- This title block is copyright of MLA and should not be used, removed, or altered without permission and clear identification.

Revisions: 1 29/07/2022 Issued for tender.

**NOTES:**

- TO BE READ IN CONJUNCTION WITH ALL RELEVANT NBS CLAUSES
- EXACT MEASUREMENTS OF WINDOWS ARE SUBJECT TO SITE SURVEY

**TENDER**

Client

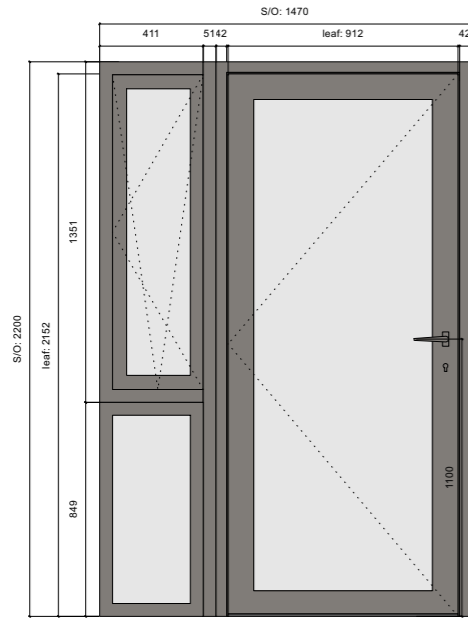
Original Sheet Size **A3**

Matthew Lloyd Architects

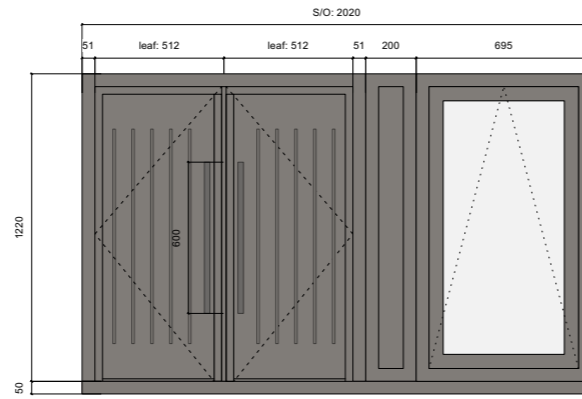
1b The Hangar  
Perseverance Works  
38 Kingsland Road  
London E2 8DD  
T 020 7613 1934  
email: mail@matthewlloyd.co.uk  
www.matthewlloyd.co.uk

Date: Oct-22	Scale: 1:30 @ A3	Checked by: ASp	Drawn by: EV
Project: TYBALDS ESTATE CAMDEN			
Drawing title: PROPOSED WINDOW SCHEDULE - 2/4			
Reference: TE	Dwg No: 701	Rev: T03	

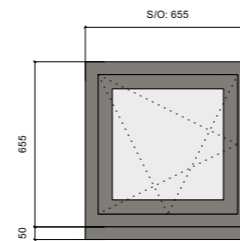
WT09 (window/door)



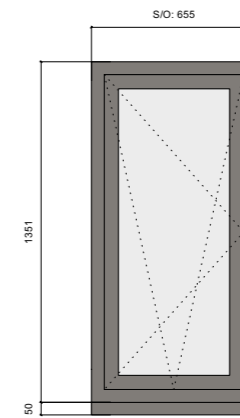
WT10 (riser/window)



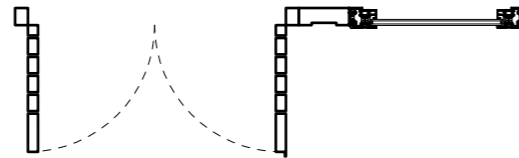
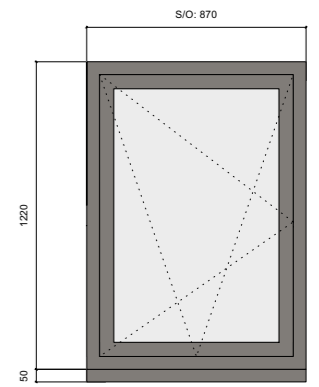
WT11



WT12



WT13



REF	WB-06; WB-09; WB-12; WB-14; WF-02; WF-03; WF-05	WB-21; WB-24; WB-27; WB-30	WB-15; WB-16	WF-01; WF-04; WF-07	WR-10; WR-15; WF-06; WF-09; WF-11
LOCATION	UB.2.3; UB.3.3; UB.4.3; UB.5.1; UF.1.3; UF.2.1; UF.3.1	UB.1.4; UB.2.4; UB.3.4; UB.4.4	UB.6.0; UB.6.1	UF.1.1; UF.2.3; UF.3.2	UF.3.1; UF.3.1; UF.3.6; UF.3.9; UR.1.9; UR.2.5
MATERIAL	Aluminium with double glazing	Aluminium with double glazing	Aluminium with double glazing	Aluminium with double glazing	Aluminium with double glazing
WINDOW SIZE	2200 x 1470mm; top pane tilt and turn inwards; bottom pane fixed; door openable outwards	1220 x 2020mm; Reynaers Vision 50 doors openable; window tilt and turn inwards	655 x 655mm; tilt and turn inwards	1351 x 655mm; tilt and turn inwards	1220 x 870mm; tilt and turn inwards
PRODUCT NAME	Reynaers Concept System 77 aluminium glazed door & window system (CS77 LTH)	Bespoke aluminium doors & Reynaers Concept System 77 aluminium window (CS77 LTH)	Reynaers Concept System 77 aluminium window (CS77 LTH)	Reynaers Concept System 77 aluminium window (CS77 LTH)	Reynaers Concept System 77 aluminium window (CS77 LTH)
FINISH	RAL 7039 Quartz Grey; matt	RAL 7039 Quartz Grey; matt	RAL 7039 Quartz Grey; matt	RAL 7039 Quartz Grey; matt	RAL 7039 Quartz Grey; matt
HINGES	As per manufacturer	As per manufacturer	As per manufacturer	As per manufacturer	As per manufacturer
HANDLE	As per manufacturer	As per manufacturer	As per manufacturer	As per manufacturer	As per manufacturer
LOCK	As per manufacturer	As per manufacturer	As part of handle	As part of handle	As part of handle
ACCESSORIES	N/A	N/A	Friction stay & restriction	Friction stay & restriction	Friction stay & restriction
NOTES	Flush threshold				

Notes:

- Do not scale from this drawing.
- All dimensions to be verified prior to the commencement of any work or the production of any shop drawings.
- Matthew Lloyd Architects (MLA) shall be notified in writing of any discrepancies.
- Survey and boundaries indicative only.
- Proposals are subject to utilities surveys and specialist consultants' input & coordination.
- Any areas indicated are approximate and indicative only.
- Where an item is covered by drawings in different scales the larger scale drawing is to be worked to.
- Drawing to be read in conjunction with relevant consultant's drawings and specifications.
- Where MLA services on a project do not include for site inspections and work surveys, MLA do not warrant that 'as built' issue drawings are a complete and accurate record of what has been built.
- MLA shall not be liable for the consequences of any use, misuse or variation of this drawing for any purpose other than that for which it was originally prepared.
- This title block is copyright of MLA and should not be used, removed, or altered without permission and clear identification.

Revisions: 1 29/07/2022 Issued for tender.

**NOTES:**

- TO BE READ IN CONJUNCTION WITH ALL RELEVANT NBS CLAUSES
- EXACT MEASUREMENTS OF WINDOWS ARE SUBJECT TO SITE SURVEY

**TENDER**

Client:

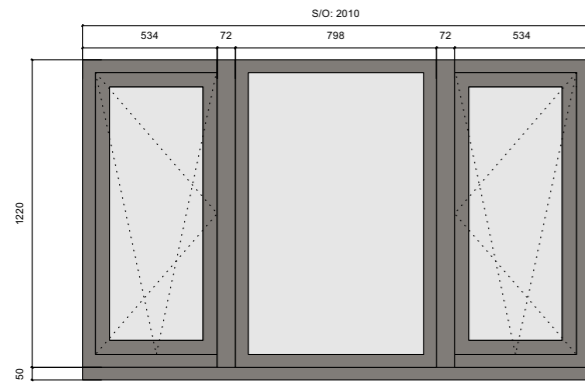
Original Sheet Size **A3**

Matthew Lloyd Architects

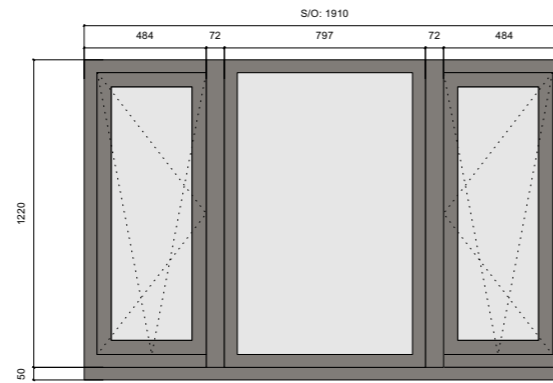
1b The Hangar  
Perseverance Works  
38 Kingsland Road  
London E2 8DD  
T 020 7613 1934  
email: mail@matthewlloyd.co.uk  
www.matthewlloyd.co.uk

Date: Oct-22	Scale: 1:30 @ A3	Checked by: ASp	Drawn by: EV
Project: TYBALDS ESTATE CAMDEN			
Drawing title: PROPOSED WINDOW SCHEDULE - 3/4			
Reference: TE	Dwg No: 702	Rev: T03	

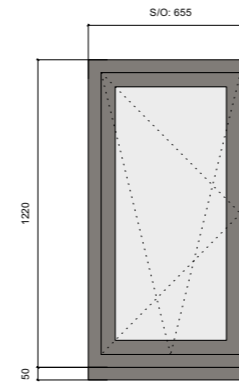
WT05



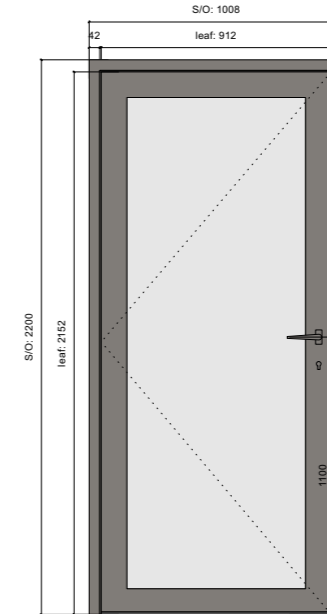
WT06



WT07



WT08 (door)



REF	WF-10; WF-14; WF-16; WF-17	WR-09; WR-12; WR-13; WR-16	WR-11; WR-14	WB-03
LOCATION	UF.1.3, 1.5, 2.4, 3.7, 3.8	UR.1.5; UR.1.9; UR.2.5; UR.2.9	UR.2.8; UR.16	UB.1.3
MATERIAL	Aluminium with double glazing	Aluminium with double glazing	Aluminium with double glazing	Aluminium with double glazing
WINDOW SIZE	1220 x 2010mm; tilt and turn inwards; middle pane fixed	1220 x 1910mm; tilt and turn inwards; middle pane fixed	1220 x 655mm; tilt and turn inwards	2200 x 1008mm; openable outwards
PRODUCT NAME	Reynaers Concept System 77 aluminium window (CS77 LTH)	Reynaers Concept System 77 aluminium window (CS77 LTH)	Reynaers Concept System 77 aluminium window (CS77 LTH)	Reynaers Concept System 77 aluminium glazed door (CS77 LTH)
FINISH	RAL 7039 Quartz Grey; matt	RAL 7039 Quartz Grey; matt	RAL 7039 Quartz Grey; matt	RAL 7039 Quartz Grey; matt
HINGES	As per manufacturer	As per manufacturer	As per manufacturer	As per manufacturer
HANDLE	As per manufacturer	As per manufacturer	As per manufacturer	As per manufacturer
LOCK	As part of handle	As part of handle	As part of handle	As part of handle
ACCESSORIES	Friction stay & restriction	Friction stay & restriction	Friction stay & restriction	Friction stay & restriction
NOTES				Flush threshold

Notes:

- Do not scale from this drawing.
- All dimensions to be verified prior to the commencement of any work or the production of any shop drawings.
- Matthew Lloyd Architects (MLA) shall be notified in writing of any discrepancies.
- Survey and boundaries indicative only.
- Proposals are subject to utilities surveys and specialist consultants' input & coordination.
- Any areas indicated are approximate and indicative only.
- Where an item is covered by drawings in different scales the larger scale drawing is to be worked to.
- Drawing to be read in conjunction with relevant consultant's drawings and specifications.
- Where MLA services on a project do not include for site inspections and work surveys, MLA do not warrant that 'as built' issue drawings are a complete and accurate record of what has been built.
- MLA shall not be liable for the consequences of any use, misuse or variation of this drawing for any purpose other than that for which it was originally prepared.
- This title block is copyright of MLA and should not be used, removed, or altered without permission and clear identification.

Revisions: 1 29/07/2022 Issued for tender.

**NOTES:**

- TO BE READ IN CONJUNCTION WITH ALL RELEVANT NBS CLAUSES
- EXACT MEASUREMENTS OF WINDOWS ARE SUBJECT TO SITE SURVEY

**TENDER**

Client

Original Sheet Size **A3**

Matthew Lloyd Architects

1b The Hangar  
Perseverance Works  
38 Kingsland Road  
London E2 8DD  
T 020 7613 1934  
email: mail@matthewlloyd.co.uk  
www.matthewlloyd.co.uk

Date: Oct-22	Scale: 1:30 @ A3	Checked by: ASp	Drawn by: EV
Project: TYBALDS ESTATE CAMDEN			
Drawing title: PROPOSED WINDOW SCHEDULE - 2/4			
Reference: TE	Dwg No: 701	Rev: T03	

## 2 Doors



# Aluminium Entrance Doors

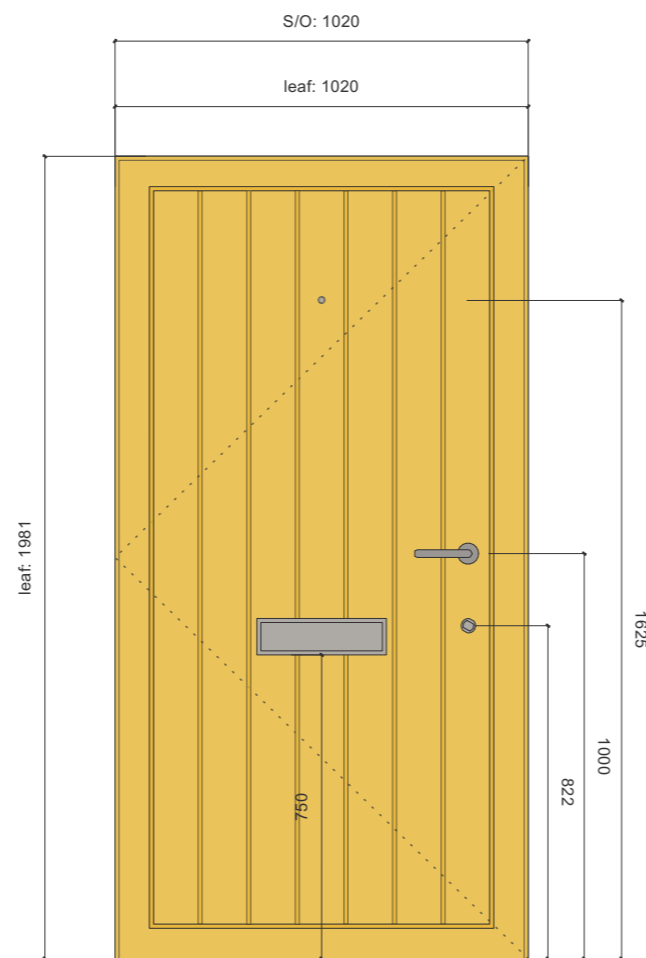
For all flat front doors:

SUNFLEX UK - Lingwood  
External aluminium front door w/  
accessible threshold

Finish:  
PPC RAL 1032 Broom Yellow;  
matt

Product website:  
[www.sunflexuk.co.uk/front-doors/](http://www.sunflexuk.co.uk/front-doors/)

Door Handles:  
Allgood - Alite Lever Handle -  
97422SSN Satin Stainless steel



Proposed aluminium door (refer to 1:10 detail on following page)



RAL 1032 Broom Yellow



Hafele Spring Flap Letter Plate (330mm x 110mm), Satin (Matt) Stainless Steel - 986.08.310



SUNFLEX Door Viewer



Allgood - Alite Lever Handle - 97422SSN Satin Stainless steel

Proposed door furniture

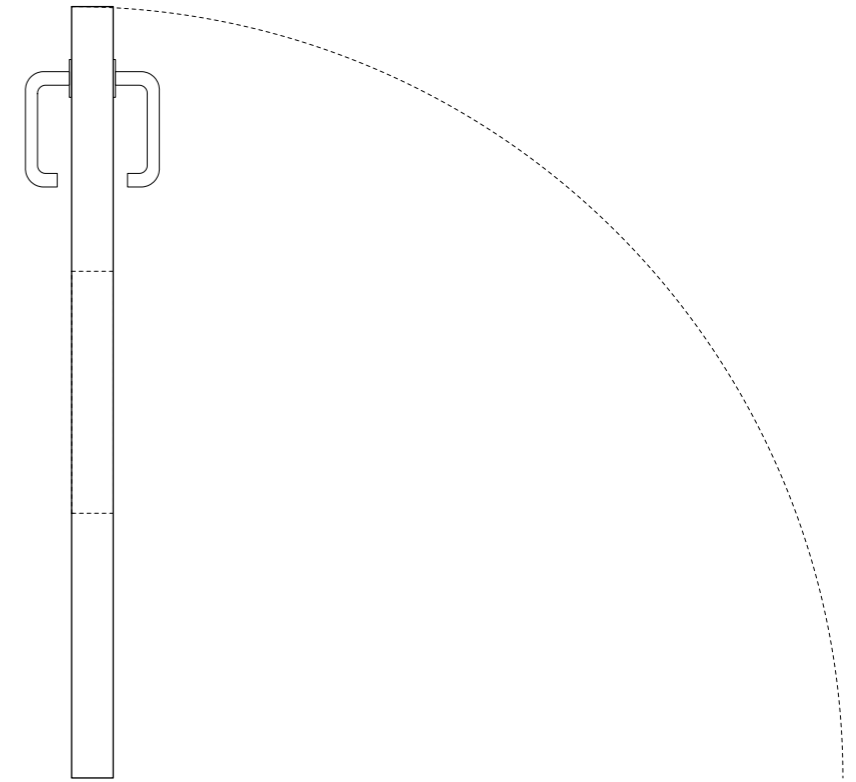
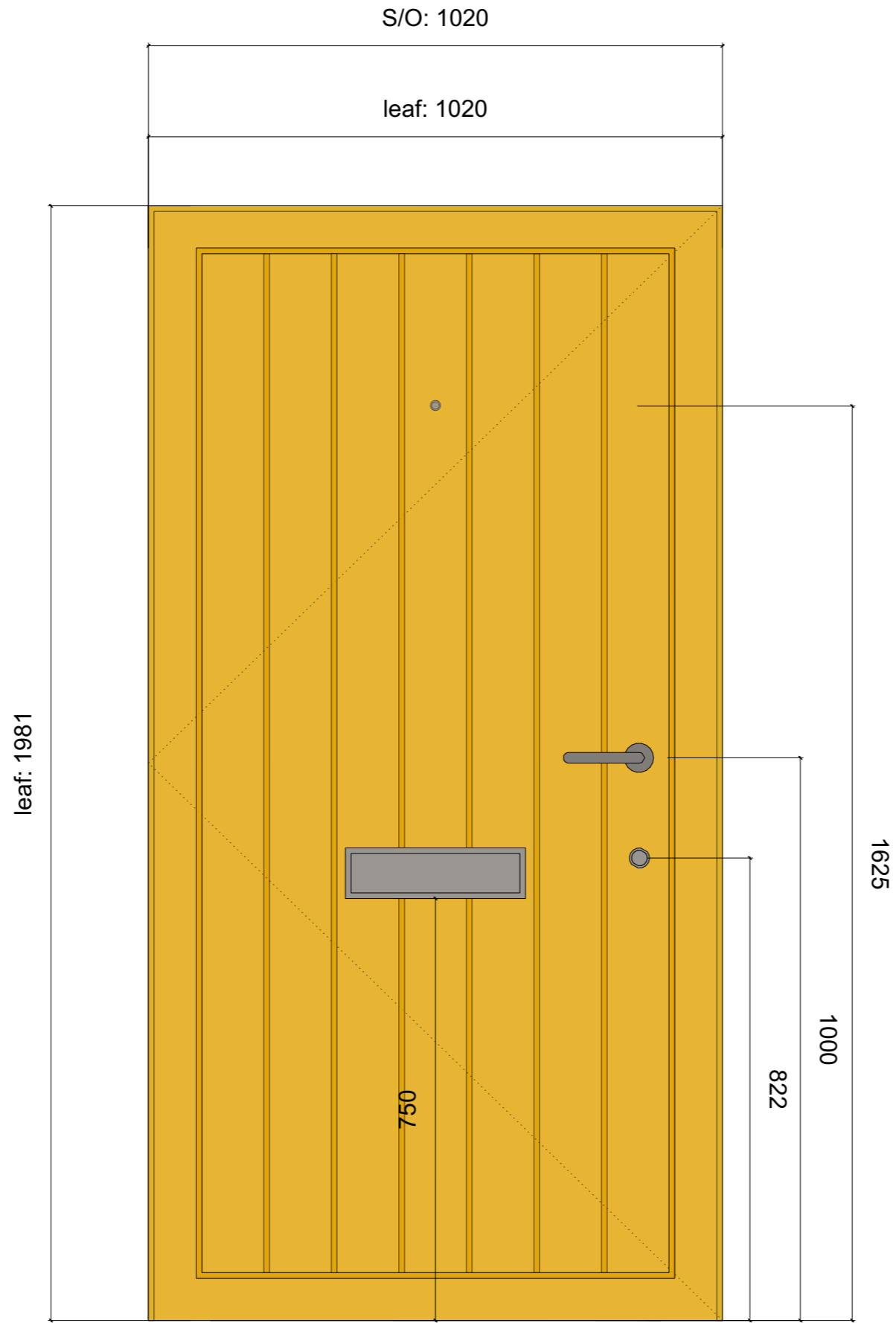
# Entrance Door Details

TYPICAL 1:10

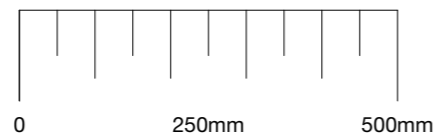
SUNFLEX UK - Lingwood  
External aluminium front door w/  
accessible threshold

Finish:  
PPC RAL 1032 Broom Yellow;  
matt

Handle:  
Allgood - Alite Lever Handle -  
97422SSN Satin Stainless steel



1:10 Typical door in plan



1:10 Typical door elevation