

**From:** Rob Lewis

**Sent:** 23 November 2022 21:25

**To:** Patrick Marfleet; Planning

**Cc:** Louise Hammersley

**Subject:** SM GOSH Independent survey of residents, workers and business owners

**FAO Patrick/Planning Dept,**

Please find attached the final results of the independent SurveyMonkey poll commissioned by Great Ormond Street Group to gauge local opinion on Great Ormond Street Hospital's planning application.

The poll was carried out by two independent researchers by way of face to face interviews at the Great Ormond Street Hospital "Drop In" meeting hosted by Great Ormond Street Hospital on 10/11/2022 and then by verified polling of local residents who had been invited but were unable to physically attend GOSH's event between 11/11/2022 and 18/11/2022.

Overall polling period 10/11/2022 to 18/11/2022.

We would like this to be published to the portal as a part of Great Ormond Street Group's objection to the current plans.

Can you please publish full screen as a PDF so it can be easily read – we note some non GOSH submissions have been reduced in size and so can be difficult to read.

We are also sending it to Great Ormond Street Hospital and the members of the Great Ormond Street Group.

We are awaiting details of when we can meet you. We are concerned that you have had many meetings with GOSH but to date are apparently resisting / refusing to meet residents, businesses or local community groups. Please advise on how this can be resolved to ensure a fair, open and democratic process.

Best,

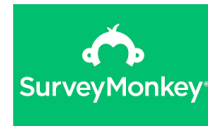
Rob



# GOSH Planning Application Survey

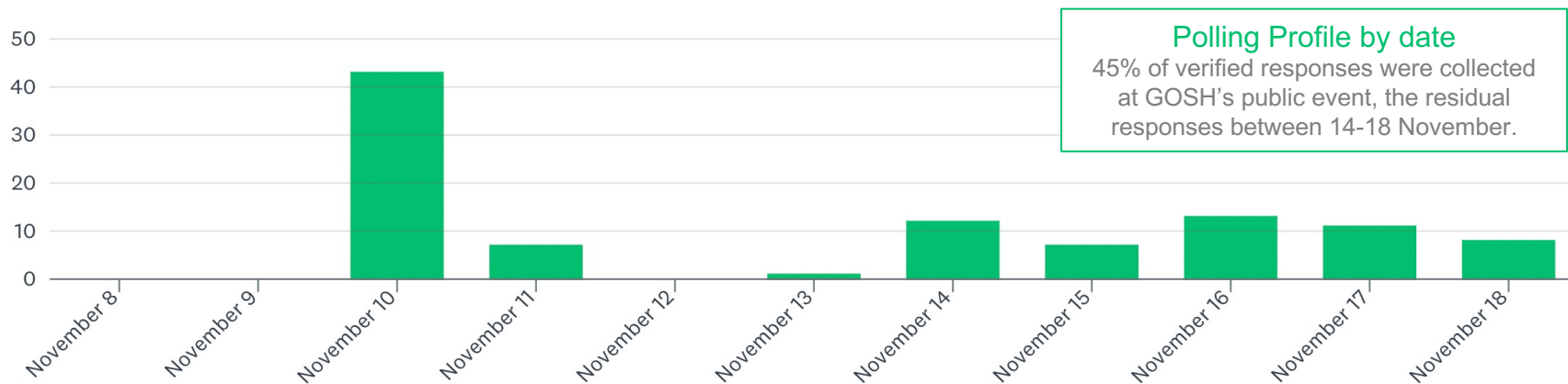
Results published Friday, November 18, 2022

# Independent SurveyMonkey poll profile



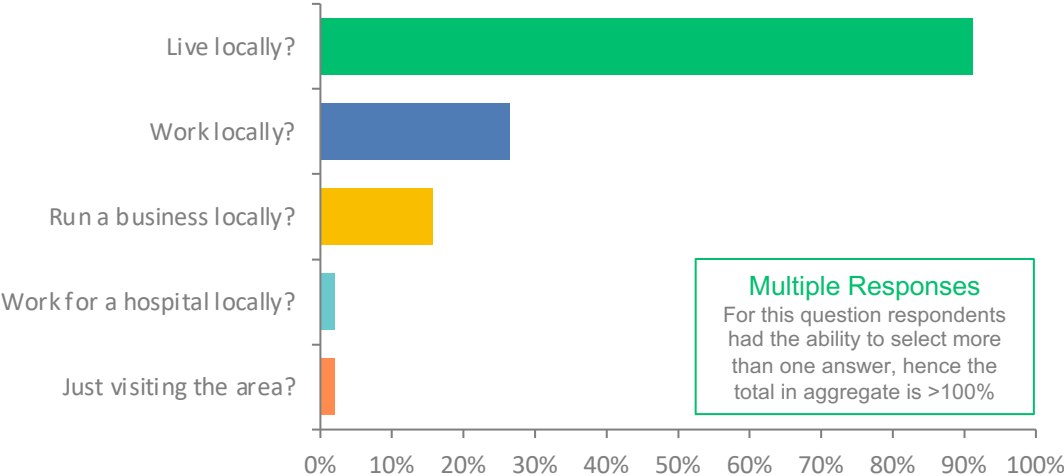
- Independent SurveyMonkey poll commissioned by Great Ormond Street Group to gauge local opinion on Great Ormond Street Hospital's planning application, Camden ref: 2022/2255.
- Poll was carried out by two independent researchers by way of face to face interviews at the Great Ormond Street Hospital "Drop In" meeting hosted by Great Ormond Street Hospital on 10/11/2022 and then by verified polling of local residents who had been invited but were unable to physically attend GOSH's event between 11/11/2022 and 18/11/2022.
- Overall polling period 10/11/2022 to 18/11/2022.
- 102 verified responses in total with results verified by independent researchers.

November 8 - November 18



# Q1. Profile of respondents

Do you... *(please choose one or more options)*

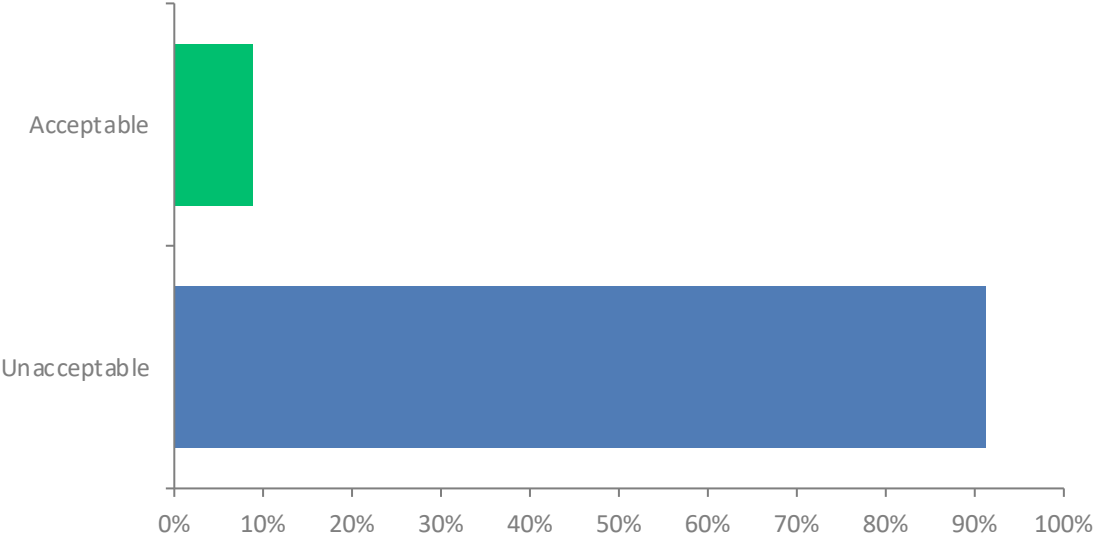


## SAMPLE PROFILE:

The vast majority of respondents (92%) lived locally, with a significant proportion (27%) also working locally.

## Q2: What do you think of the size and scale of GOSH's proposed new building?

Answered: 102 Skipped: 0

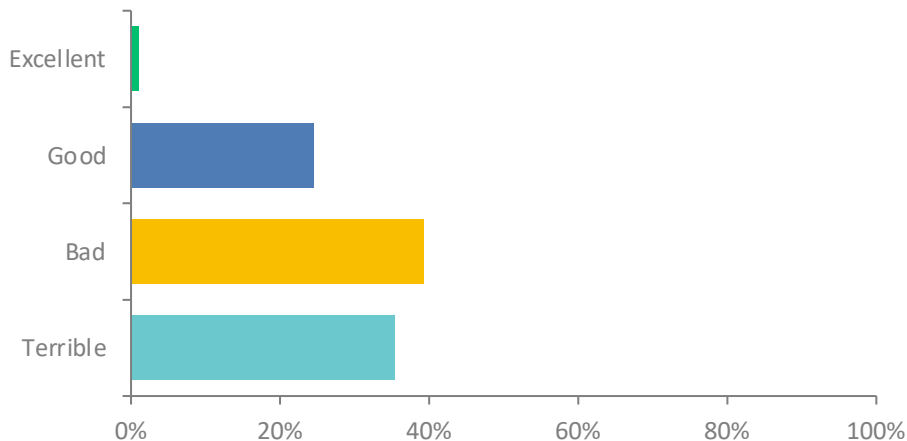


**CONCLUSION:**

Vast majority of respondents (91%) thought the size and scale of GOSH’s proposed building was “Unacceptable”.

### Q3: What do you think of the design of the new building?

Answered: 102 Skipped: 0

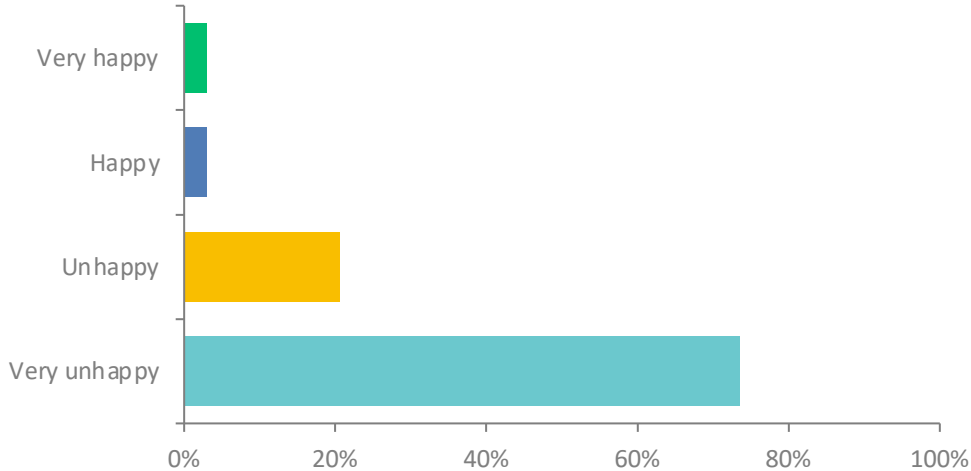


#### CONCLUSION:

A quarter of respondents (25%) liked the design of building.  
But 74% said the design was either “Bad” or “Terrible”.

#### Q4: Are you happy with the proposed programme of works including demolition, build, road traffic arrangements, lorry access etc?

Answered: 102 Skipped: 0

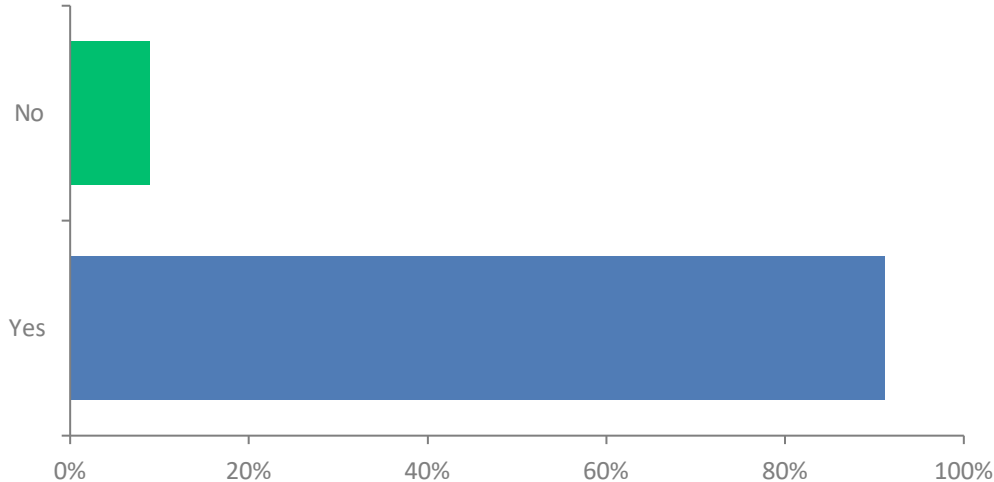


#### CONCLUSION:

The programme of works was extremely unpopular with respondents. 95% were "Very Unhappy" or "Unhappy" with GOSH's proposals.

## Q5: Do you think there is any danger to pedestrians, cyclists and children from the proposed programme of works? (e.g. access arrangements for lorries)

Answered: 101 Skipped: 1



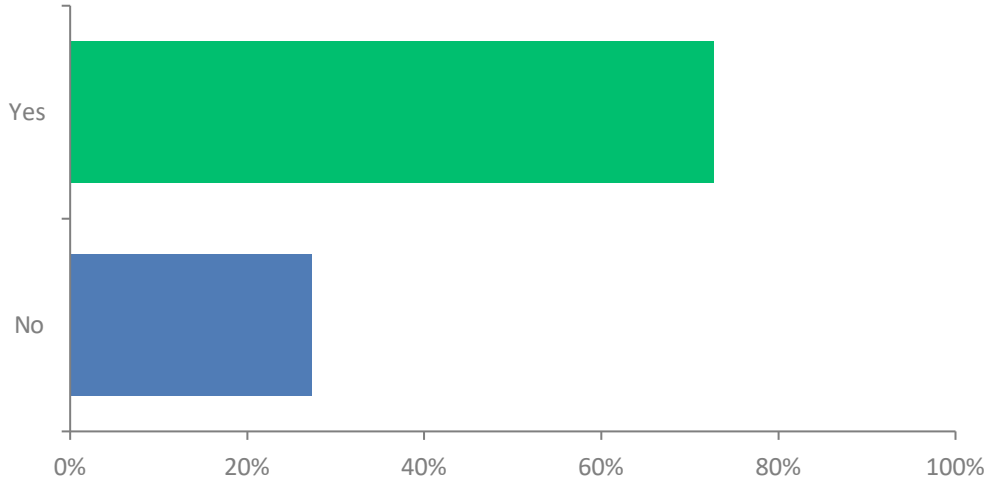
### CONCLUSION:

The vast majority of respondents (91%) thought the project represented a danger to pedestrians, cyclists and children.



## Q6: Do you think there is currently excessive air conditioning and plant noise in the area?

Answered: 99 Skipped: 3

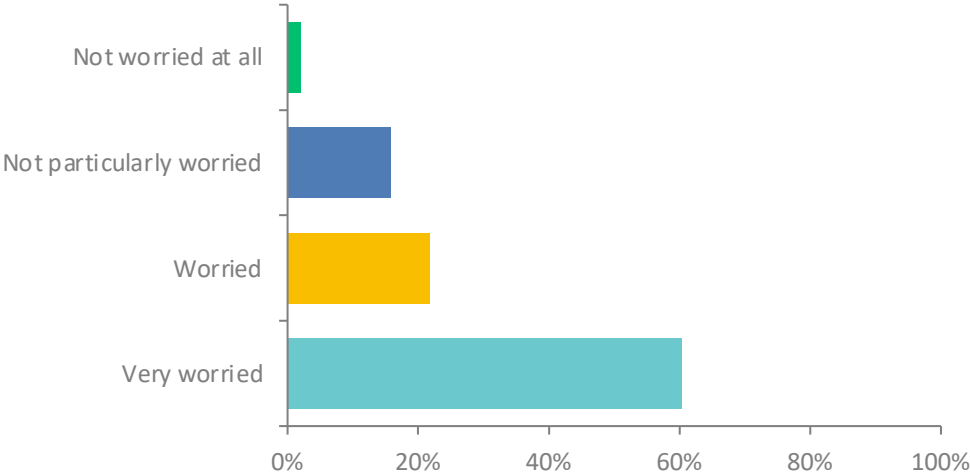


### CONCLUSION:

The significant majority of respondents (73%) thought air conditioning noise and plant noise was already a problem in the local area.

# Q7: Are you worried about the two floors of air conditioning and plant proposed by GOSH?

Answered: 101 Skipped: 1

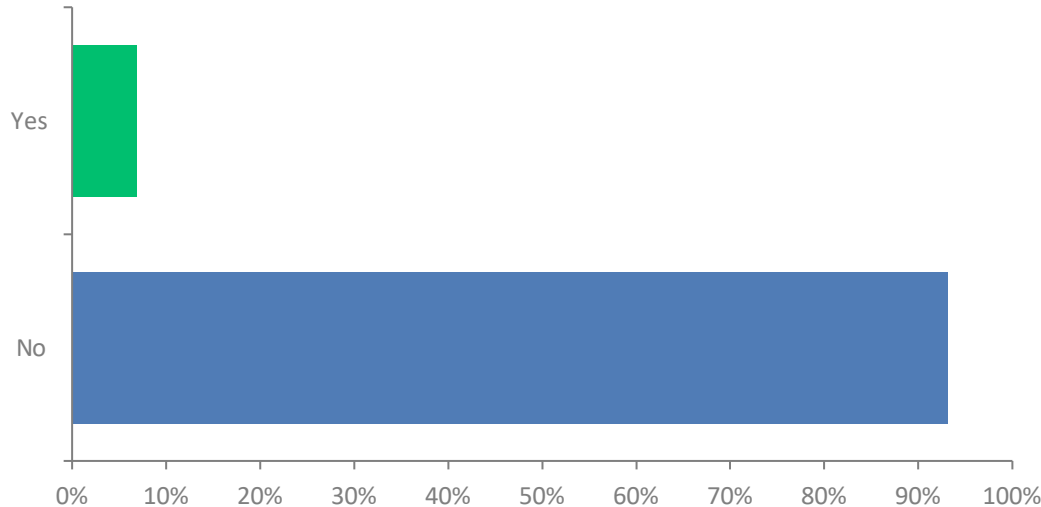


## CONCLUSION:

The vast majority (>82%) were “Worried” or “Very Worried” about the the air conditioning and plant noise that could be generated by GOSH’s new building, if it were to go ahead

## Q8: Having due consideration for the scale of the scheme, do you think the local community have been properly consulted or involved in the design?

Answered: 102 Skipped: 0

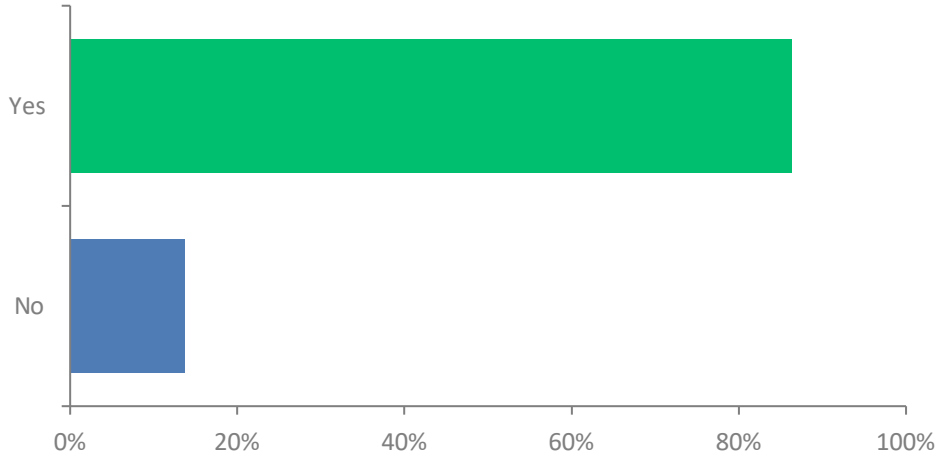


### CONCLUSION:

>93% of respondents said the local community had not properly consulted or involved in the design given the scale of the scheme.

## Q9: Do you think local businesses will be at risk if the GOSH development is approved by Camden?

Answered: 102 Skipped: 0

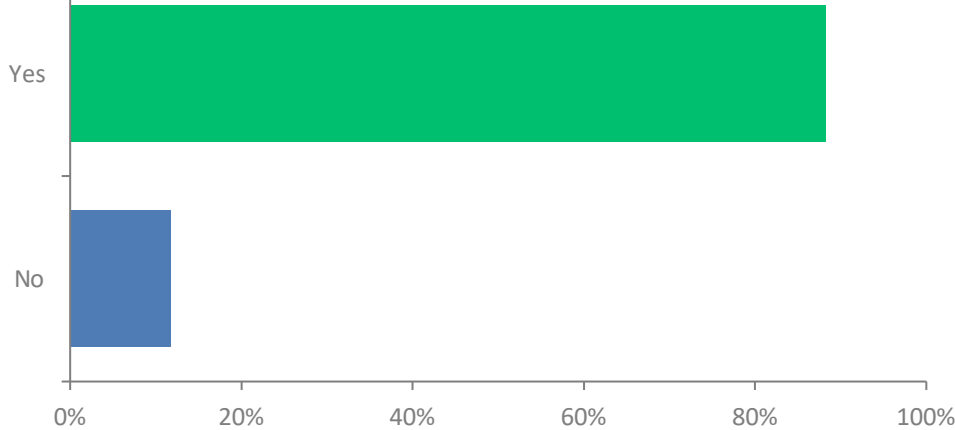


### CONCLUSION:

The vast majority of respondents (>86%) thought local businesses would be risk if Camden approved GOSH's planning application.

## Q10: Do you think GOSH should have considered other alternative sites where a brand new hospital can be built? (rather than just consider redevelopment of the existing site)?

Answered: 102 Skipped: 0

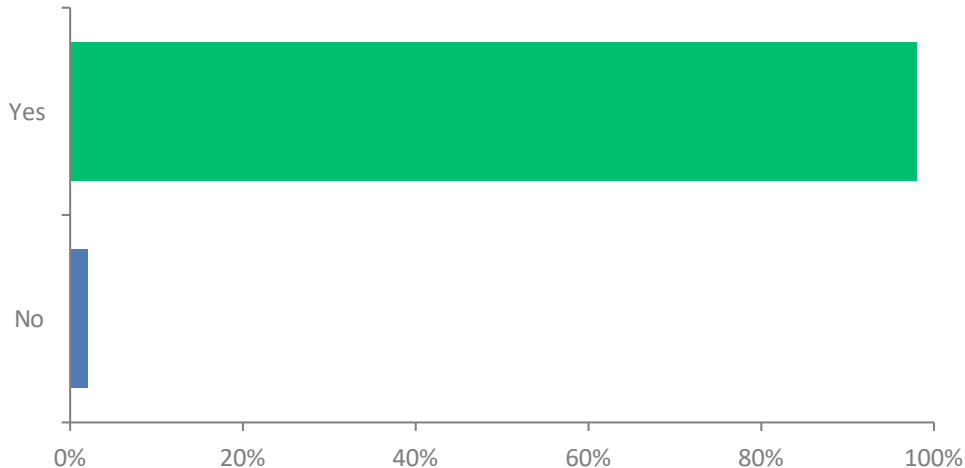


### CONCLUSION:

The vast majority of respondents (>88%) felt GOSH should have considered new alternative sites rather than a new building at Great Ormond Street.

## Q11: Putting aside the scheme itself, do you support Great Ormond Street Hospital for what they do for children?

Answered: 100 Skipped: 2

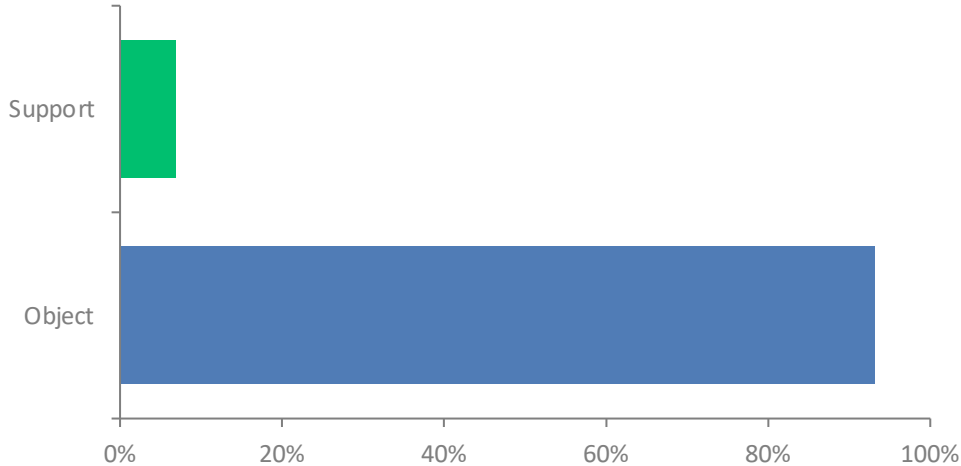


### CONCLUSION:

Notably, the vast majority of respondents (98%) supported GOSH's work as an institution...

## Q12: Having considered everything, do you SUPPORT or OBJECT to GOSH's planning application?

Answered: 102 Skipped: 0



### CONCLUSION:

However, the vast majority of respondents (>93%)  
"Objected" to GOSH's planning application.

## Respondents were asked to sum up their views in a few words

- Responses show significant level concern in the local community.

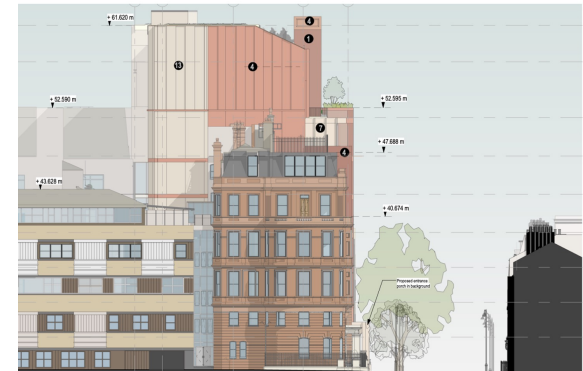
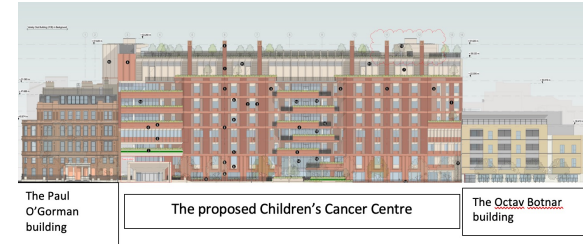
"Will destroy the quiet enjoyment of a unique Camden neighbourhood. "	"Grandiose, overbearing scheme proposed by an arrogant and thoughtless management"
"It is based in a residential area and is now way too big. Needs to move in part or in total"	"A terrible idea without any consideration for the local population especially vulnerable"
"Huge and unnecessary overdevelopment of the site which sits in an important Conservation Area"	"Nobody is really listening to the views of residents"
"While GOSH does great work, its current plans are completely inappropriate for its site "	"Bad for the local community and architecturally disgusting."
"At least two storeys too high"	"Overbearing, oversized, intrusive and inconsiderate."
"An abomination which will destroy the unique character of this area"	"We care about the hospital but the hospital doesn't care about us."
"Totally out of scale and contemptuous of local wishes"	"Gross overdevelopment of a restricted site; GOSH needs to move to pastures new."



# Survey Conclusions



- It is rare to see a public survey deliver such definitive results.
- It is clear the vast majority of the local community object to GOSH's planning application, with the primary reasons being:
  - (a) scale/size;
  - (b) demolition/construction/access plans;
  - (c) health and safety concerns re: cyclists, pedestrians, children;
  - (d) air conditioning and plant noise concerns;
  - (e) damage to local businesses;
  - (f) perceived failure in consulting local community;
  - (g) a failure to consider alternative sites.
- If GOSH's proposal was to be granted planning permission as is, there can be no doubt that it would be against the wishes of the vast majority of local community.



The Paul O'Gorman building with the proposed CCC behind it

Buildings on the south side of the street. The silhouette is of the Barclay building on the corner of Queen Square. The older buildings further towards Lamb's Conduit St are a lot lower than this one



## Appendix – detailed results

## Q2: What do you think of the size and scale of GOSH's proposed new building?

Answered: 102 Skipped: 0

ANSWER CHOICES	RESPONSES	
Acceptable	8.82%	9
Unacceptable	91.18%	93
TOTAL		102

# Q3: What do you think of the design of the new building?

Answered: 102 Skipped: 0

ANSWER CHOICES	RESPONSES	
Excellent	0.98%	1
Good	24.51%	25
Bad	39.22%	40
Terrible	35.29%	36
TOTAL		102

**Q4: Are you happy with the proposed programme of works including demolition, build, road traffic arrangements, lorry access etc?**

Answered: 102   Skipped: 0

ANSWER CHOICES	RESPONSES	
Very happy	2.94%	3
Happy	2.94%	3
Unhappy	20.59%	21
Very unhappy	73.53%	75
TOTAL		102

**Q5: Do you think there is any danger to pedestrians, cyclists and children from the proposed programme of works? (e.g. access arrangements for lorries)**

Answered: 101 Skipped: 1

ANSWER CHOICES	RESPONSES	
No	8.91%	9
Yes	91.09%	92
TOTAL		101

**Q6: Do you think there is currently excessive air conditioning and plant noise in the area?**

Answered: 99   Skipped: 3

ANSWER CHOICES	RESPONSES	
Yes	72.73%	72
No	27.27%	27
TOTAL		99

# Q7: Are you worried about the two floors of air conditioning and plant proposed by GOSH?

Answered: 101 Skipped: 1

ANSWER CHOICES	RESPONSES	
Not worried at all	1.98%	2
Not particularly worried	15.84%	16
Worried	21.78%	22
Very worried	60.40%	61
TOTAL		101



**Q8: Having due consideration for the scale of the scheme, do you think the local community have been properly consulted or involved in the design?**

Answered: 102   Skipped: 0

ANSWER CHOICES	RESPONSES	
Yes	6.86%	7
No	93.14%	95
TOTAL		102

# Q9: Do you think local businesses will be at risk if the GOSH development is approved by Camden?

Answered: 102 Skipped: 0

ANSWER CHOICES	RESPONSES	
Yes	86.27%	88
No	13.73%	14
TOTAL		102

**Q10: Do you think GOSH should have considered other alternative sites where a brand new hospital can be built? (rather than just consider redevelopment of the existing site)?**

Answered: 102 Skipped: 0

ANSWER CHOICES	RESPONSES	
Yes	88.24%	90
No	11.76%	12
TOTAL		102

# Q11: Putting aside the scheme itself, do you support Great Ormond Street Hospital for what they do for children?

Answered: 100 Skipped: 2

ANSWER CHOICES	RESPONSES	
Yes	98.00%	98
No	2.00%	2
TOTAL		100

# Q12: Having considered everything, do you SUPPORT or OBJECT to GOSH's planning application?

Answered: 102 Skipped: 0

ANSWER CHOICES	RESPONSES	
Support	6.86%	7
Object	93.14%	95
TOTAL		102

