

**FOR APPROVAL/COMMENT ONLY - DO NOT CONSTRUCT FROM THIS DRAWING**

**NOTES**

THIRDWAY INTERIORS DO NOT ACCEPT LIABILITY FOR ANY ERRORS AND OMISSIONS ARISING FROM THE PREPARATION OF BASE BUILD DRAWINGS WHICH ARE DERIVED FROM ORIGINAL MATERIAL PROVIDED BY OTHERS.

ALL DISCREPANCIES ARE TO BE REPORTED TO THIRDWAY INTERIORS.

GRID LINES ARE FOR REFERENCE PURPOSES ONLY.

ALL DIMENSIONS TO BE VERIFIED BY CONTRACTOR ON SITE PRIOR TO ANY WORKS COMMENCING.

DO NOT SCALE FROM THIS DRAWING.

THIS DOCUMENT IS THE PROPERTY OF THIRDWAY INTERIORS. COPYRIGHT IS RESERVED BY THEM, AND THE DRAWING IS ISSUED ON THE CONDITION THAT IT IS NOT COPIED, REPRODUCED OR RETAINED BY NOR DISCLOSED TO ANY UNAUTHORISED PERSON, EITHER WHOLLY OR IN PART, WITHOUT THE CONSENT IN WRITING FROM **©THIRDWAYINTERIORS**

**FEATURE LIGHTING KEY:**

FL02 - QUAD 55  
COMPONENTSARCHITECTURAL  
BRONZE

**NEW LIGHTS TO USE EXISTING ELECTRICAL POINTS**

**STATUS**

- Approval / Comment
- Information Only
- Building Control
- Contract
- Construction
- As-Built

**REVISION DETAIL**

REV	DETAIL	BY	DATE
P1	FIRST DRAWING ISSUE	OE	13.09.22
P2	ANNOTATIONS AMENDED	OE	21.09.22
P3	FEATURE LIGHT KEY UPDATED	OE	24.10.22

**CLIENT**

**MENZIES AVIATION**

**PROJECT ADDRESS**

**21-22 BLOOMSBURY SQUARE  
LONDON**

-  
-  
-

**DRAWING TITLE**

**SECOND FLOOR  
FEATURE LIGHTING PLAN  
FOR APPROVAL**

DWG NO: **41358-02-FL**

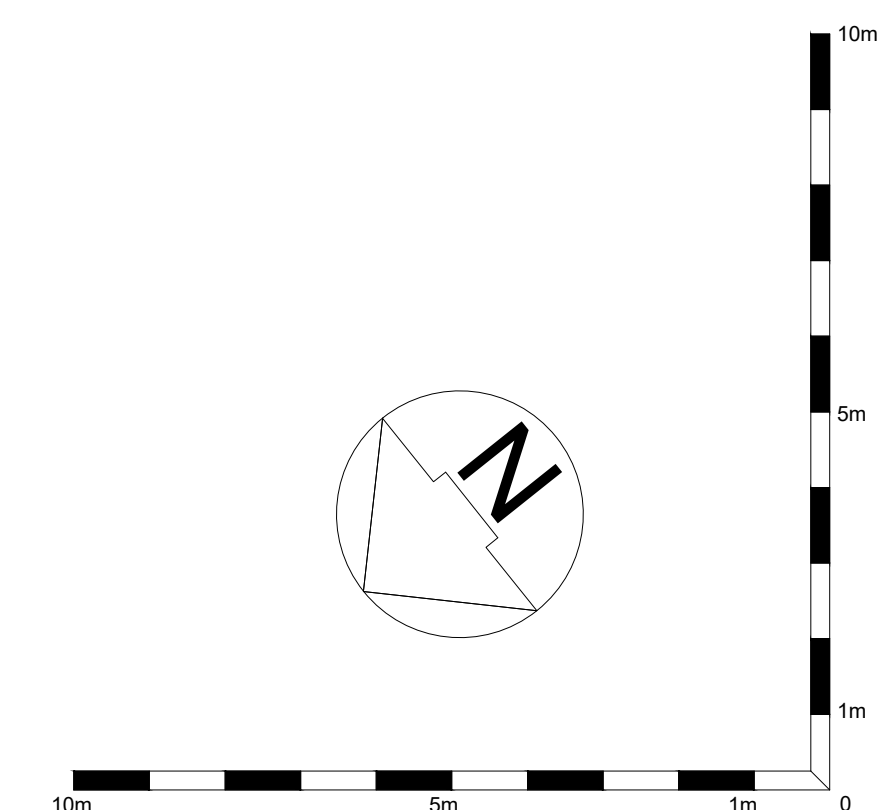
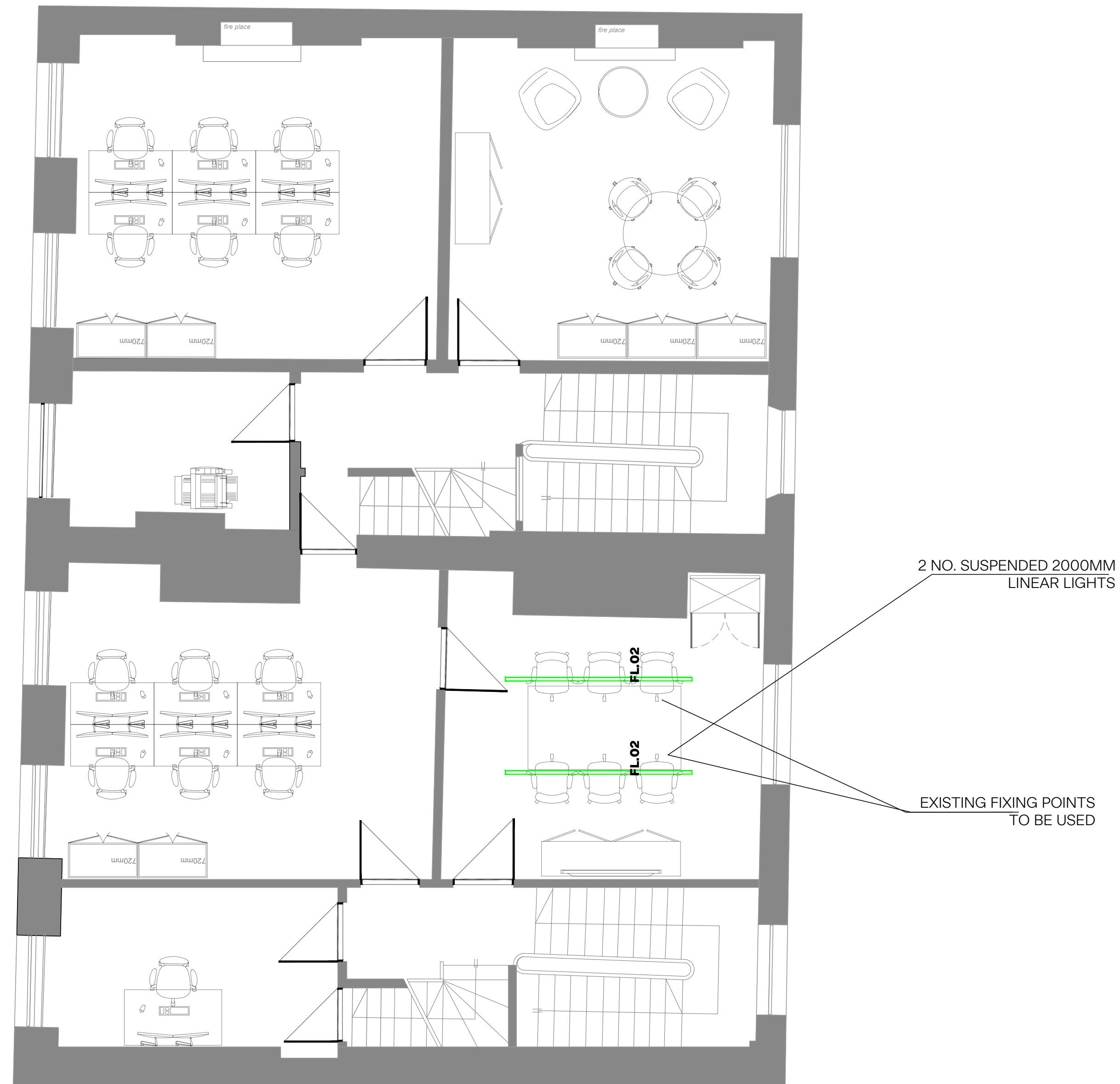
REVISION: **P3**

SCALE @A1: **1:100** @ A3: **1:200**

DATE: **08.09.22**

DRAWN BY: **OE**

CHECKED BY: **FS**



**THIRDWAY**