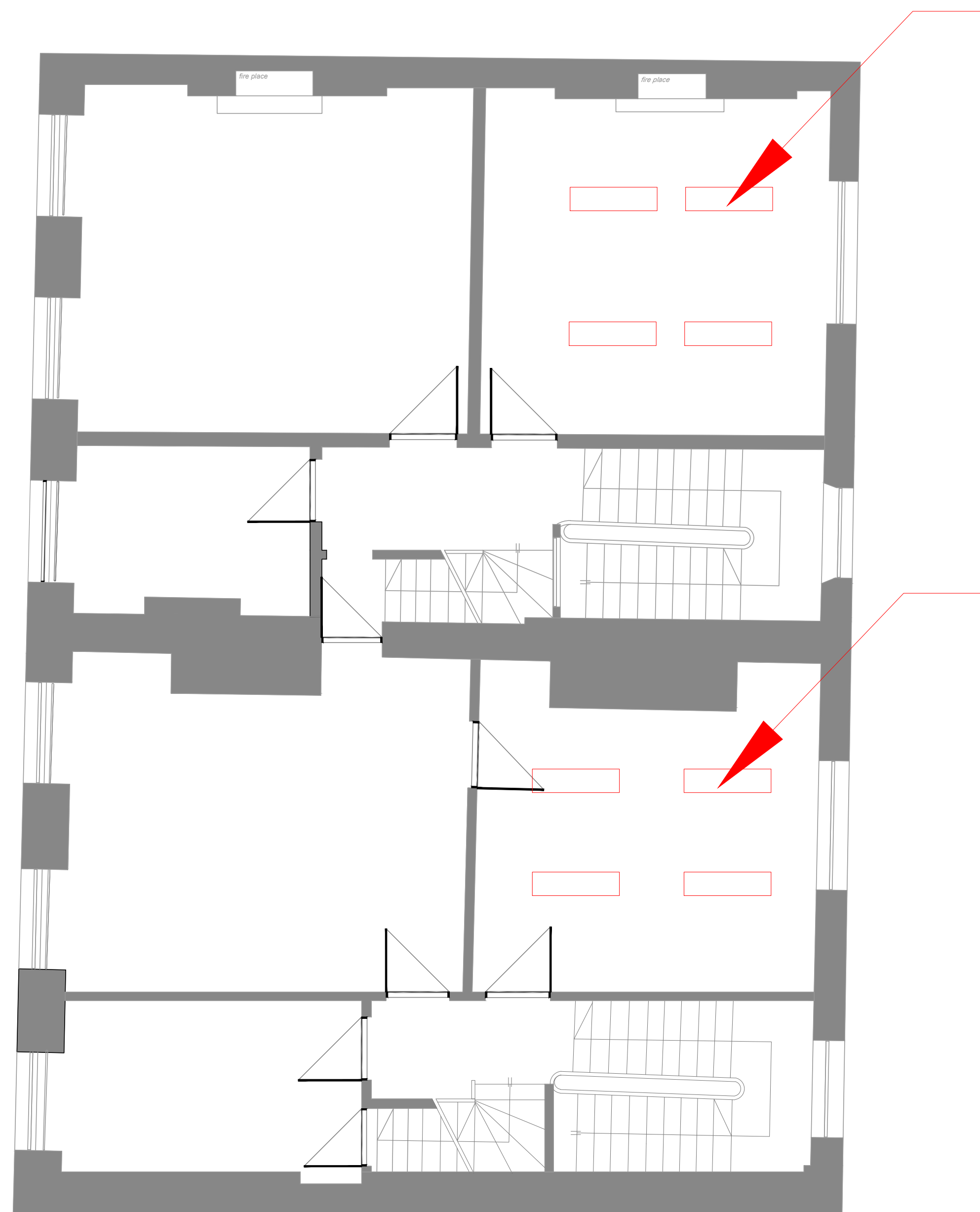


FOR APPROVAL/COMMENT ONLY - DO NOT CONSTRUCT FROM THIS DRAWING



EXISTING TASK LIGHTS TO BE REMOVED

EXISTING TASK LIGHTS TO BE REMOVED

NOTES

THIRDWAY INTERIORS DO NOT ACCEPT LIABILITY FOR ANY ERRORS AND OMISSIONS ARISING FROM THE PREPARATION OF BASE BUILD DRAWINGS WHICH ARE DERIVED FROM ORIGINAL MATERIAL PROVIDED BY OTHERS.

ALL DISCREPANCIES ARE TO BE REPORTED TO THIRDWAY INTERIORS.

GRID LINES ARE FOR REFERENCE PURPOSES ONLY.

ALL DIMENSIONS TO BE VERIFIED BY CONTRACTOR ON SITE PRIOR TO ANY WORKS COMMENCING.

DO NOT SCALE FROM THIS DRAWING.

THIS DOCUMENT IS THE PROPERTY OF THIRDWAY INTERIORS. COPYRIGHT IS RESERVED BY THEM, AND THE DRAWING IS ISSUED ON THE CONDITION THAT IT IS NOT COPIED, REPRODUCED OR RETAINED BY NOR DISCLOSED TO ANY UNAUTHORISED PERSON, EITHER WHOLLY OR IN PART, WITHOUT THE CONSENT IN WRITING FROM **©THIRDWAY INTERIORS**

DEMOLITION KEY:

 ITEMS TO BE REMOVED

STATUS

-  Approval / Comment
-  Information Only
-  Building Control
-  Contract
-  Construction
-  As-Built

REVISION DETAIL

REV	DETAIL	BY	DATE
P1	FIRST DRAWING ISSUE	OE	13.09.22
P2	ANNOTATIONS AMENDED	OE	20.09.22
P3	ANNOTATIONS UPDATED	OE	31.10.22

CLIENT

MENZIES AVIATION

PROJECT ADDRESS

**21-22 BLOOMSBURY SQUARE
LONDON**

-
-
-

DRAWING TITLE

**SECOND FLOOR
EXISTING + DEMOLITION PLAN
FOR APPROVAL**

DWG NO: **41358-02-EX+DE**

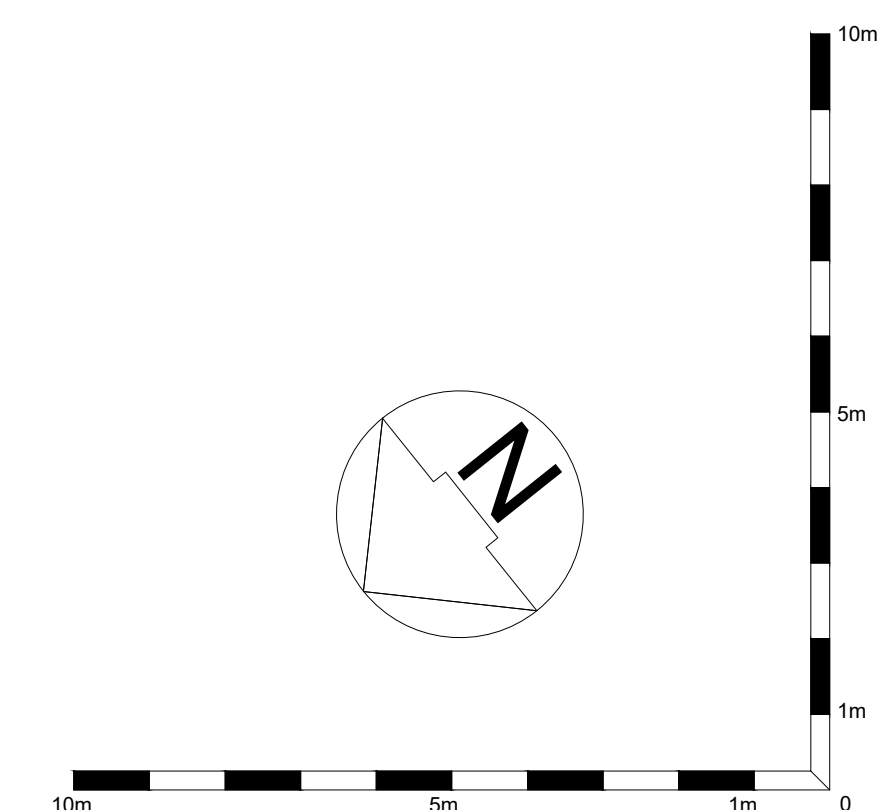
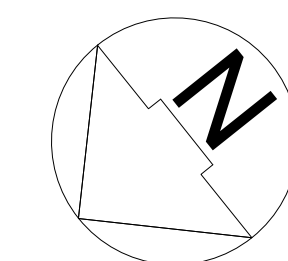
REVISION: **P3**

SCALE @A1: **1:100** @ A3: **1:200**

DATE: **08.09.22**

DRAWN BY: **OE**

CHECKED BY: **FS**



THIRDWAY