

General Notes

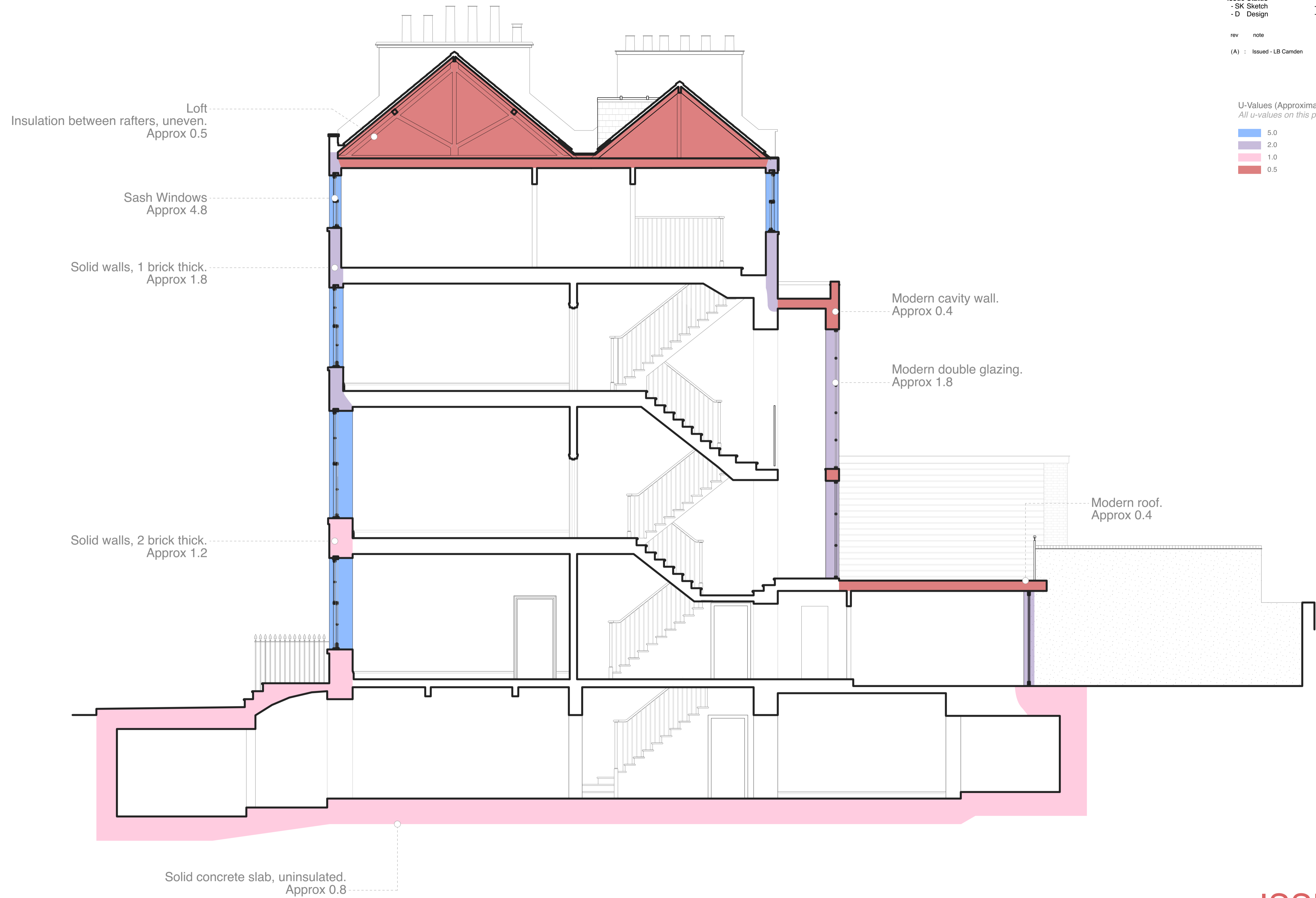
- All dimensions to be verified on site
- To be read in conjunction with all relevant documents
- In the event of discrepancy notify the Architect immediately
- All steel structural elements to be finished with intumescent coating, 30 minutes fire resistance. For all structural elements and connection see SE drawings.
- This document is copyright of Hugh Cullum Architects Ltd

Issue Status

- SK Sketch	- T Tender	- P Permissions
- D Design	- E Existing Condition	- C Contract

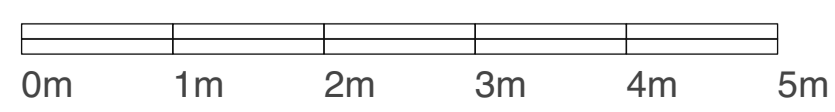
rev note date (drawn by/checked by)

(A) : Issued - LB Camden 22.11.22 (OW/HC)



U-Values (Approximate)(W/m²K)
All u-values on this page are measured in W/m²K

5.0
2.0
1.0
0.5



ISSUED

HUGH CULLUM ARCHITECTS LTD
 Bloomsbury Design
 61b Judd Street
 London WC1H 9QT
 t 020 7383 7647
 f 020 7387 7645
 mail@hughcullum.com

24 John Street
 Existing
 General Arrangement
 SEC -Typical (Fabric Performance)
 November 2022
JS024 - En300 (A)