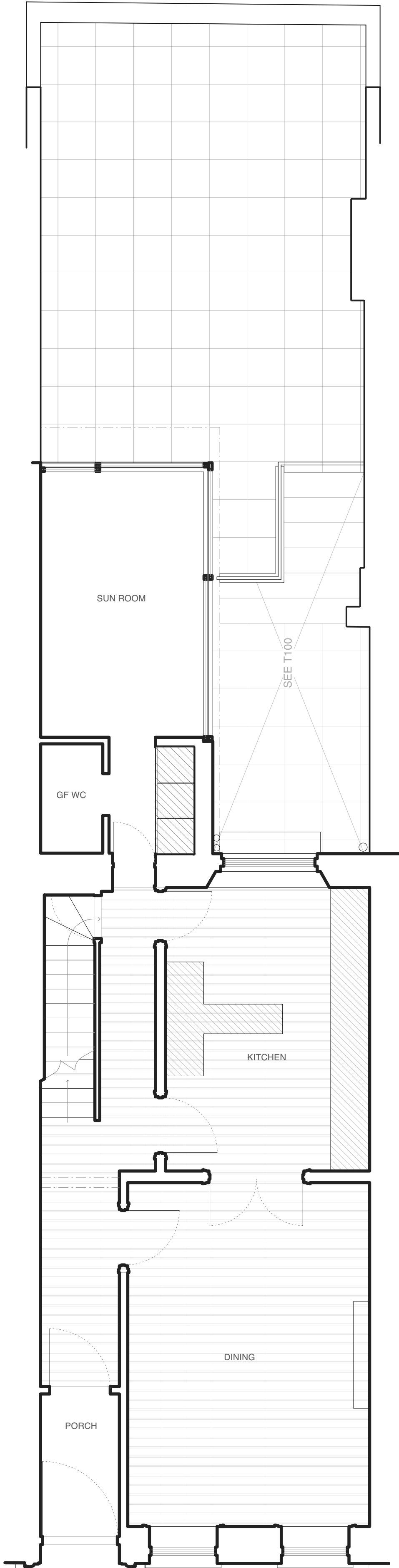


A

LGF Plan
Scale: 1:50@A1, 1:100@A3



B

GF Plan
Scale: 1:50@A1, 1:100@A3

General Notes

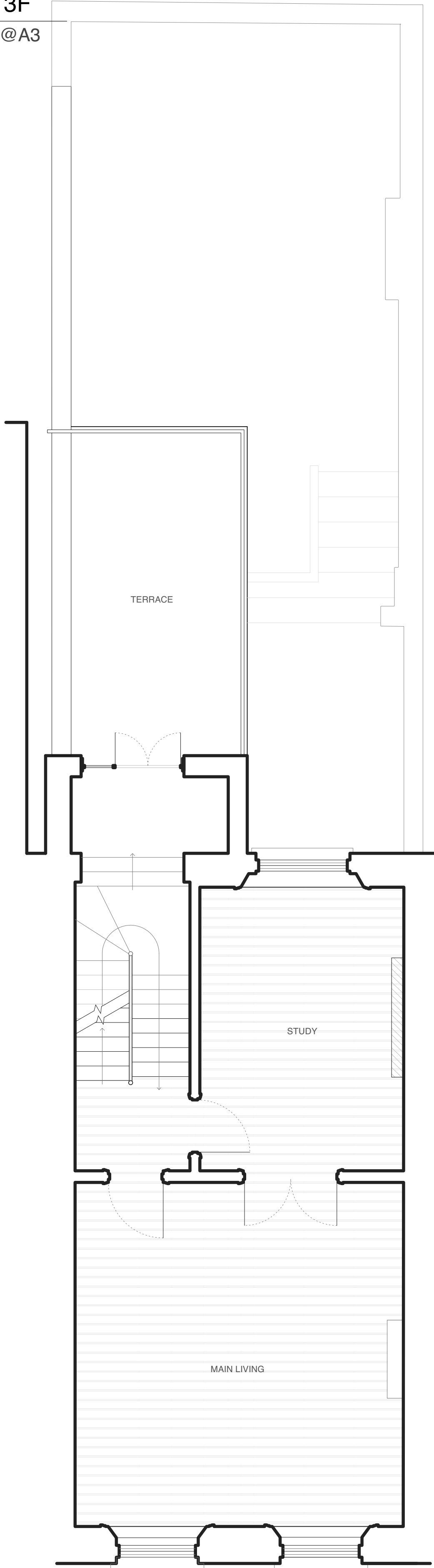
- All dimensions to be verified on site
- To be read in conjunction with all relevant documents
- In the event of discrepancy notify the Architect immediately
- All steel structural elements to be finished with intumescent coating, 30 minutes fire resistance. For all structural elements and connection see SE drawings.
- This document is copyright of Hugh Cullum Architects Ltd

Issue Status

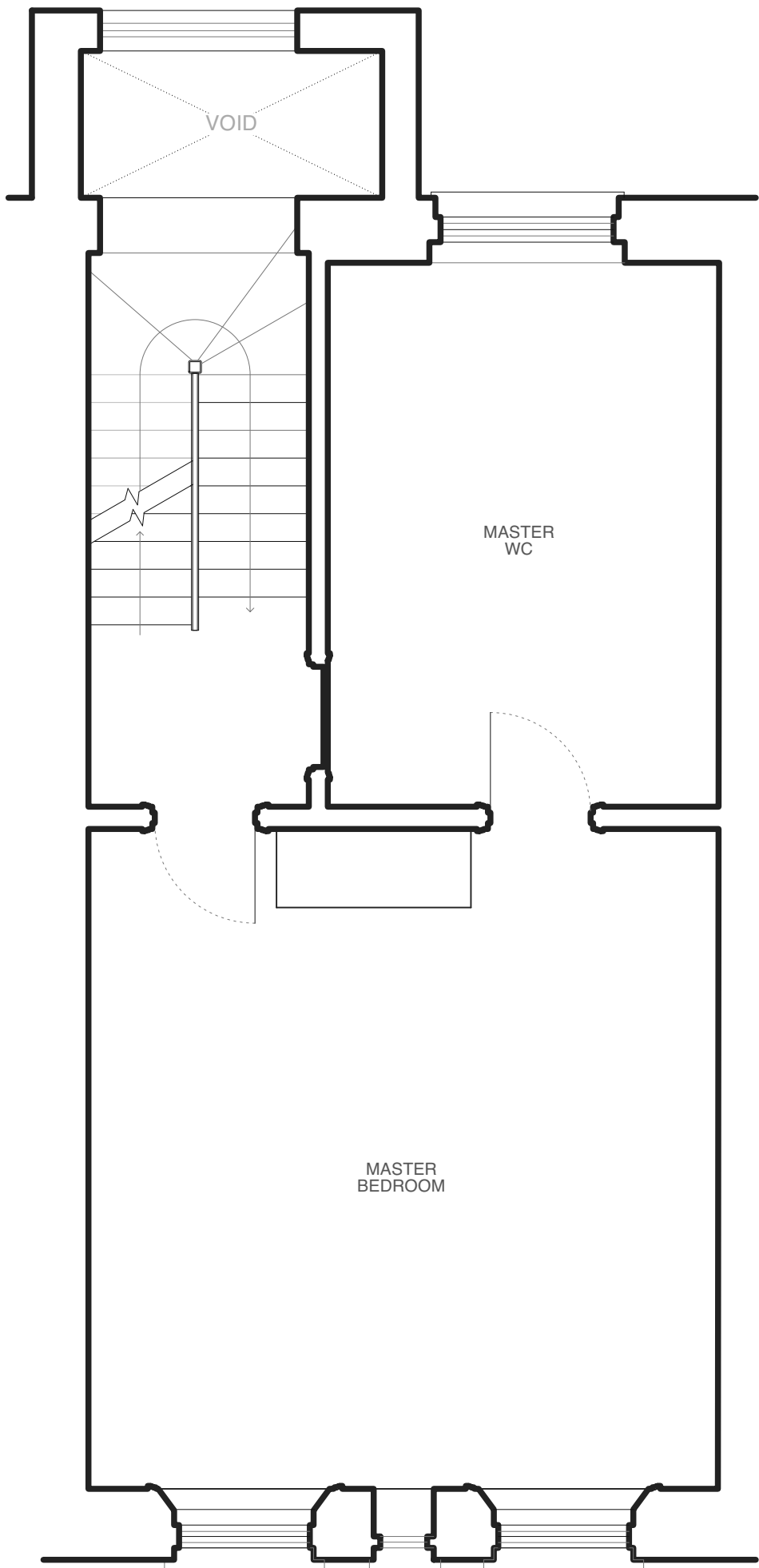
- SK Sketch	- T Tender	- P Permissions
- D Design	- E Existing Condition	- C Contract

rev	note	date	(drawn by/checked by)
(A)	: Issued - LB Camden	22.11.22	(OW/HC)

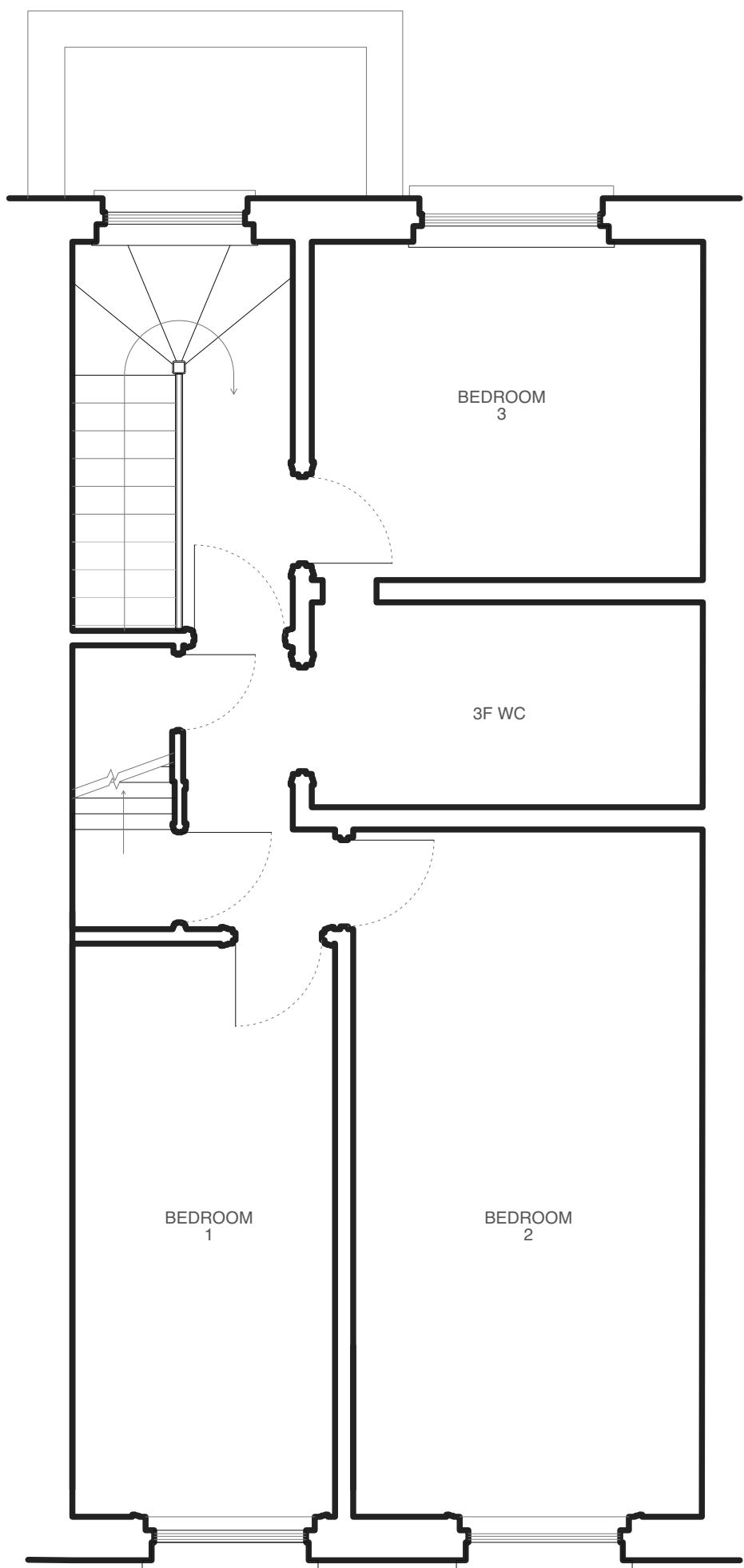
ISSUED



A 1F Plan
Scale: 1:50@A1, 1:100@A3



B 2F Plan
Scale: 1:50@A1, 1:100@A3



C 3F Plan
Scale: 1:50@A1, 1:100@A3

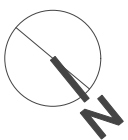
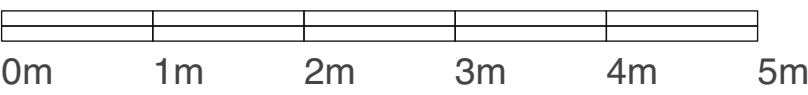
General Notes

- All dimensions to be verified on site
- To be read in conjunction with all relevant documents
- In the event of discrepancy notify the Architect immediately
- All steel structural elements to be finished with intumescent coating, 30 minutes fire resistance. For all structural elements and connection see SE drawings.
- This document is copyright of Hugh Cullum Architects Ltd

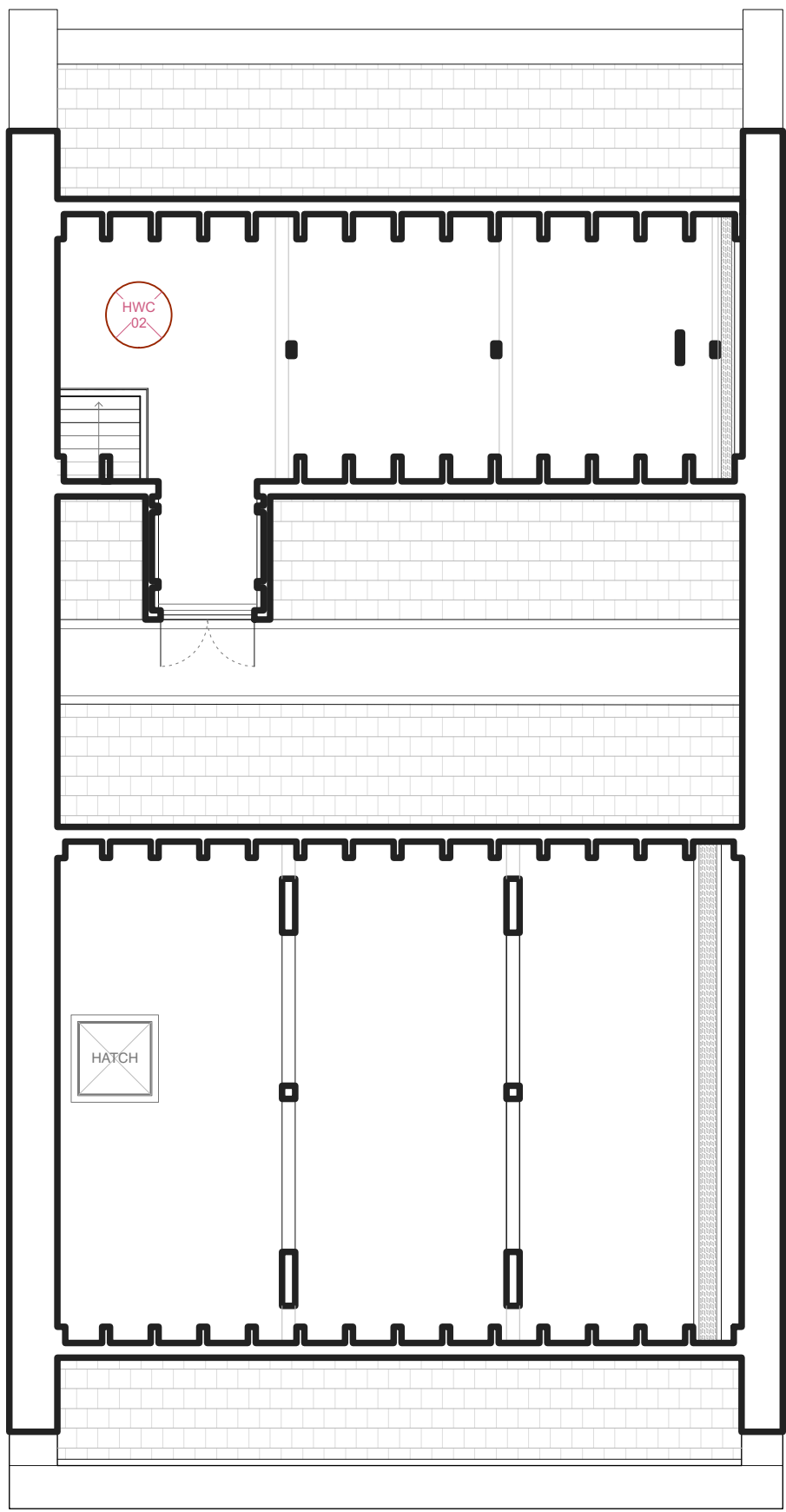
Issue Status

- SK Sketch	- T Tender	- P Permissions
- D Design	- E Existing Condition	- C Contract

rev	note	date	(drawn by/checked by)
(A)	: Issued - LB Camden	22.11.22	(OW/HC)



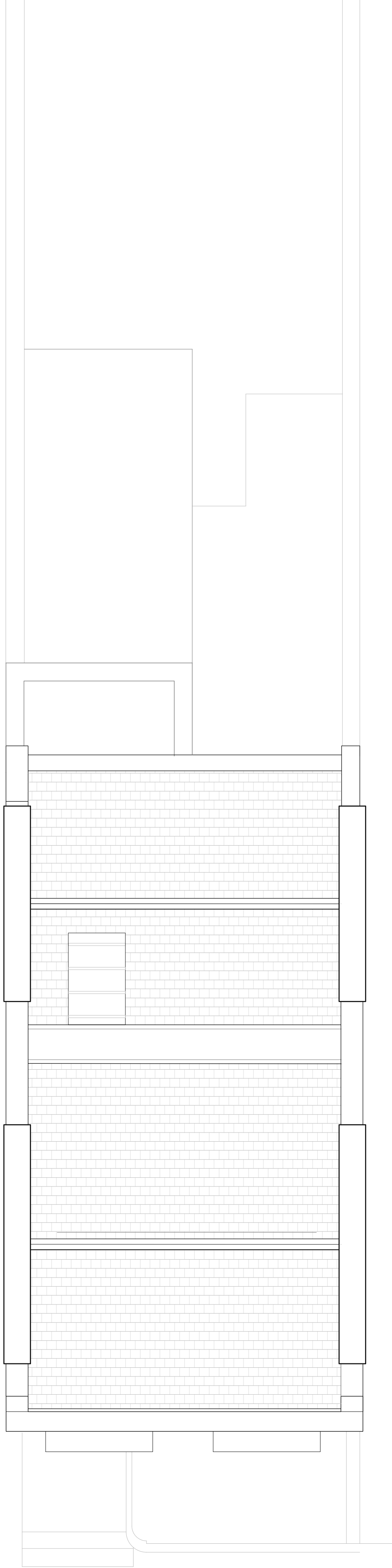
ISSUED



A

Loft Plan

Scale: 1:50@A1, 1:100@A3



B

Roof Plan

Scale: 1:50@A1, 1:100@A3

General Notes

- All dimensions to be verified on site
- To be read in conjunction with all relevant documents
- In the event of discrepancy notify the Architect immediately
- All steel structural elements to be finished with intumescent coating, 30 minutes fire resistance. For all structural elements and connection see SE drawings.
- This document is copyright of Hugh Cullum Architects Ltd

Issue Status

- SK Sketch	- T Tender	- P Permissions
- D Design	- E Existing Condition	- C Contract

rev	note	date	(drawn by/checked by)
(A)	: Issued - LB Camden	22.11.22	(OW/HC)

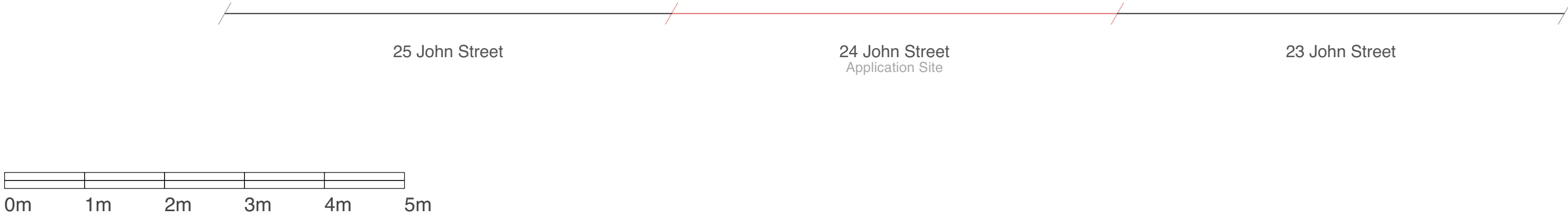
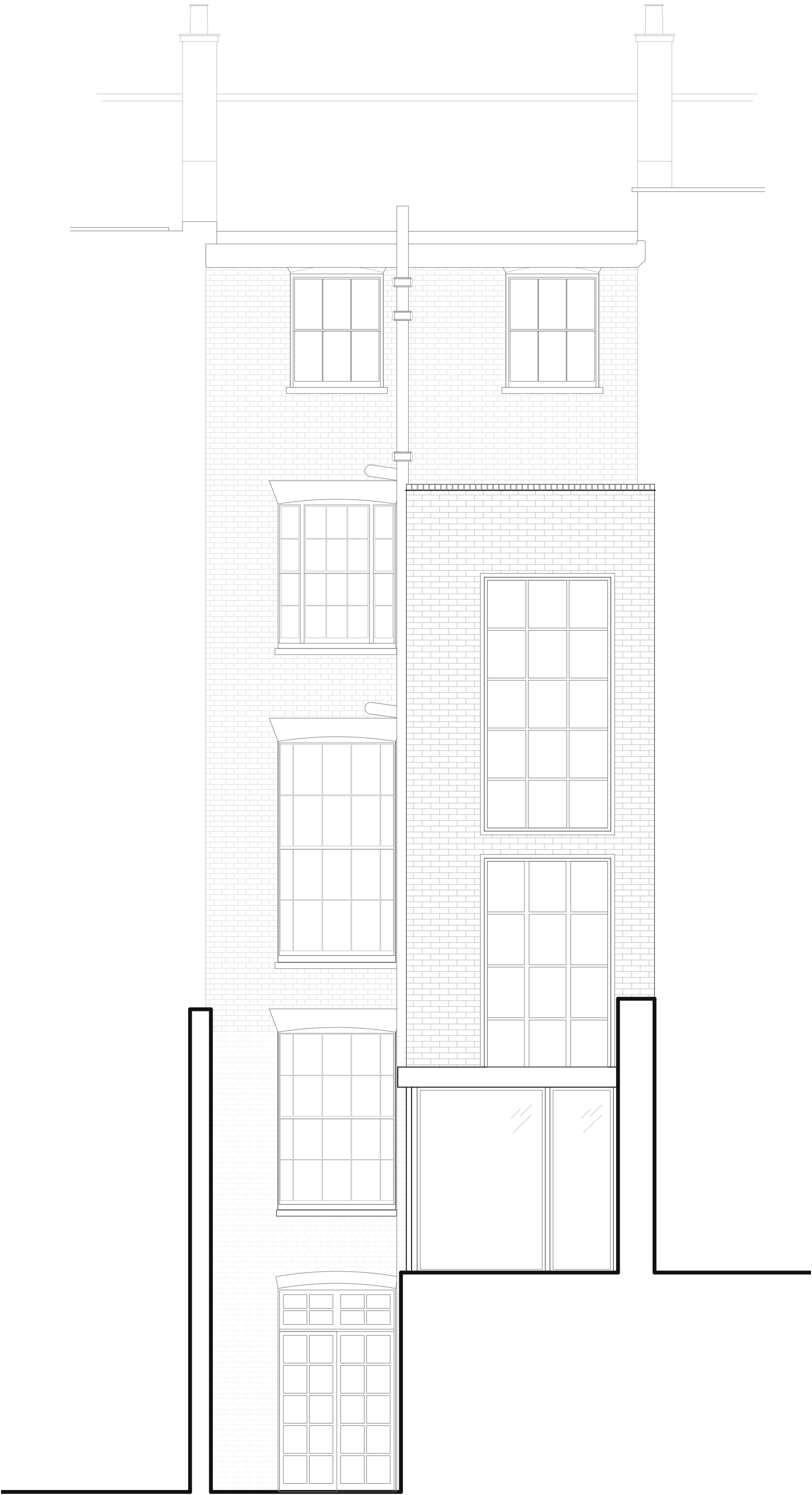
General Notes

- All dimensions to be verified on site
- To be read in conjunction with all relevant documents
- In the event of discrepancy notify the Architect immediately
- All steel structural elements to be finished with intumescent coating, 30 minutes fire resistance. For all structural elements and connection see SE drawings.
- This document is copyright of Hugh Cullum Architects Ltd

Issue Status

- SK Sketch	- T Tender	- P Permissions
- D Design	- E Existing Condition	- C Contract

rev	note	date	(drawn by/checked by)
(A)	: Issued - LB Camden	22.11.22	(OW/HC)



ISSUED

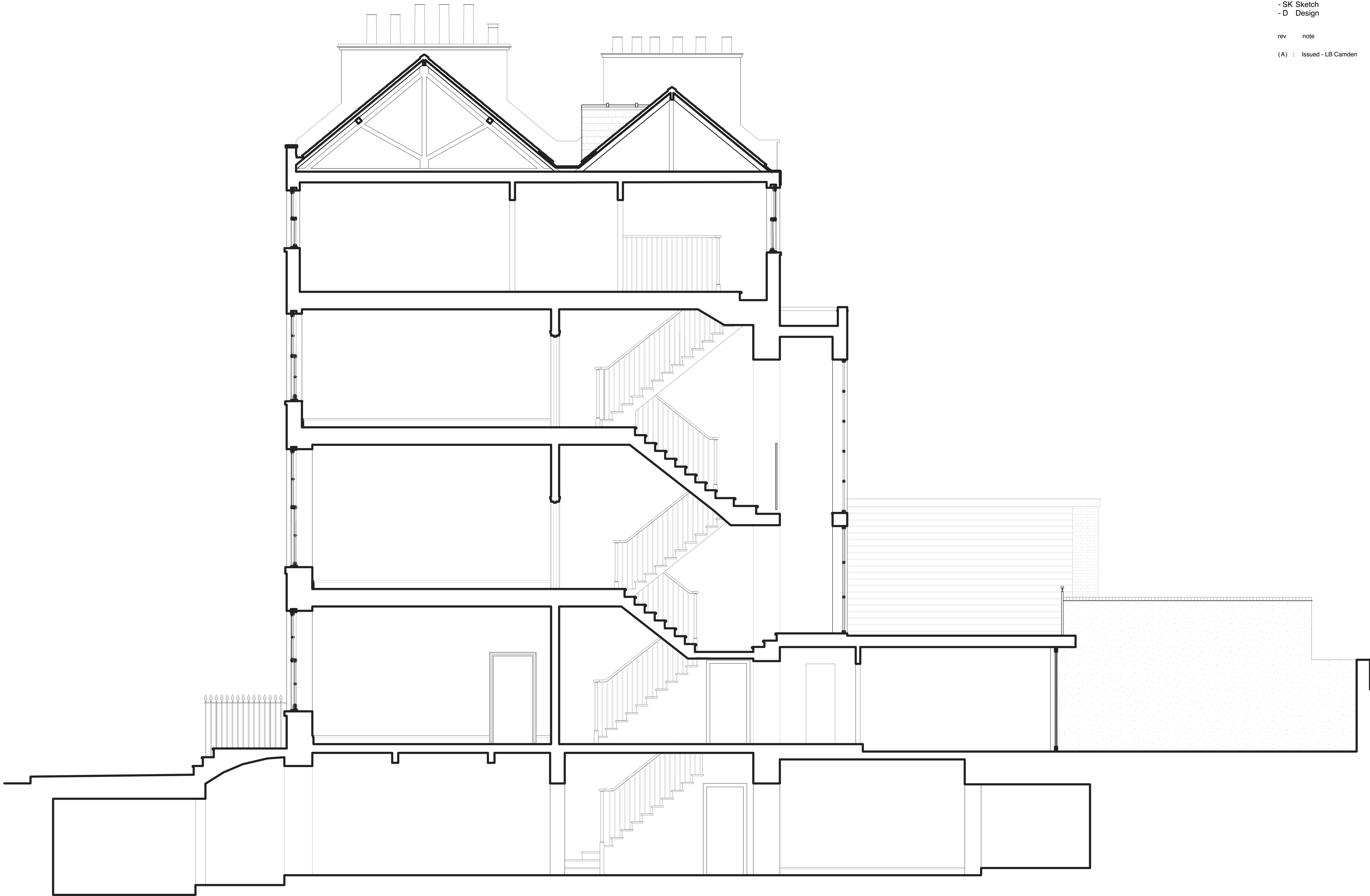
General Notes

- All dimensions to be verified on site
- To be read in conjunction with all relevant documents
- In the event of discrepancy notify the Architect immediately
- All steel structural elements to be finished with intumescent coating, 30 minutes fire resistance. For all structural elements and connection see SE drawings.
- This document is copyright of Hugh Cullum Architects Ltd

Issue Status

- SK Sketch	- T Tender	- P Permissions
- D Design	- E Existing Condition	- C Contract

rev	note	date	(drawn by/checked by)
(A)	: Issued - LB Camden	22.11.22	(OW/HC)



ISSUED