

Lighting Key

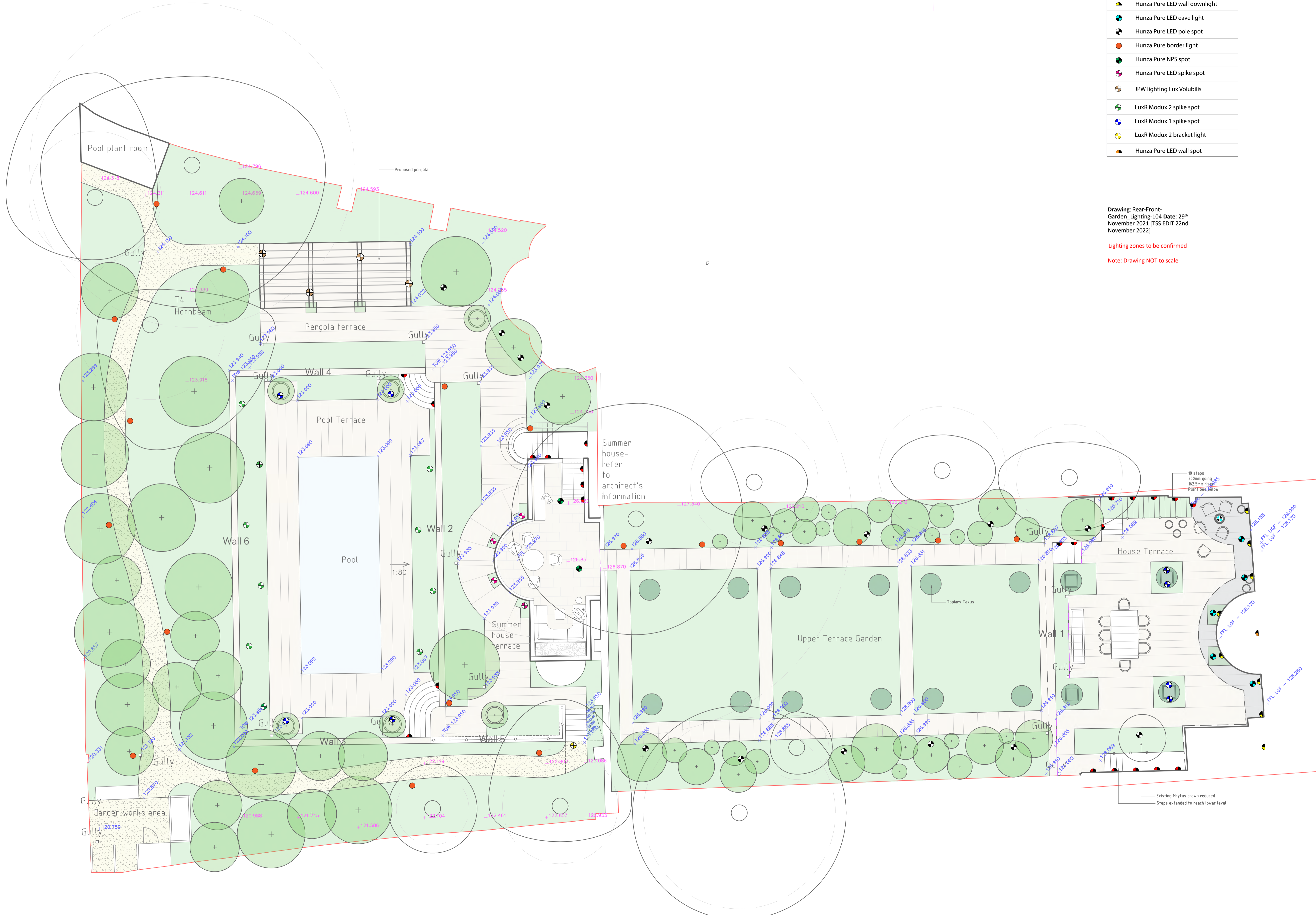
	Heritage style lantern
	Hunza Pure LED euro steplight
	Hunza Pure LED wall downlight
	Hunza Pure LED eave light
	Hunza Pure LED pole spot
	Hunza Pure border light
	Hunza Pure NPS spot
	Hunza Pure LED spike spot
	JPW lighting Lux Volubilis
	LuxR Modux 2 spike spot
	LuxR Modux 1 spike spot
	LuxR Modux 2 bracket light
	Hunza Pure LED wall spot

Proposed Level	+30.000
Existing Level	+12.350
Tree Proposed	
Tree Existing and RPA	
Proposed hard landscape paving	
Proposed plant bed	
Proposed hoggin surface	
Site Boundary	
Centre Line	
Slot Drain	
Gully	

Drawing: Rear-Front-Garden_Lighting-104 Date: 29th November 2021 (TSS EDIT 22nd November 2022)

Lighting zones to be confirmed

Note: Drawing NOT to scale



Rev	Comment	Date
P01	Planning - Preliminary issue	25/08/2021

Tom Stuart-Smith Ltd
 90/93 Cowcross Street
 London EC1M 6BF
 Tel: +44 (0)207 253 2100

Project:
 5 The Grove

Drawing:
 Rear Garden
 General Arrangement

Scale: 1:100 @ A1
 Dwg: 381-L-P-101 Rev: P01

Drawn: JT
 Date: 25/08/2021 ref:
 H:\3815 The Grove\Drawings\381-5 The Grove-L-P.dwg