

Mount Pleasant Phase 2 (Phoenix Place Site)
5.0 Planning Condition 19, Cycle Storage / Facilities

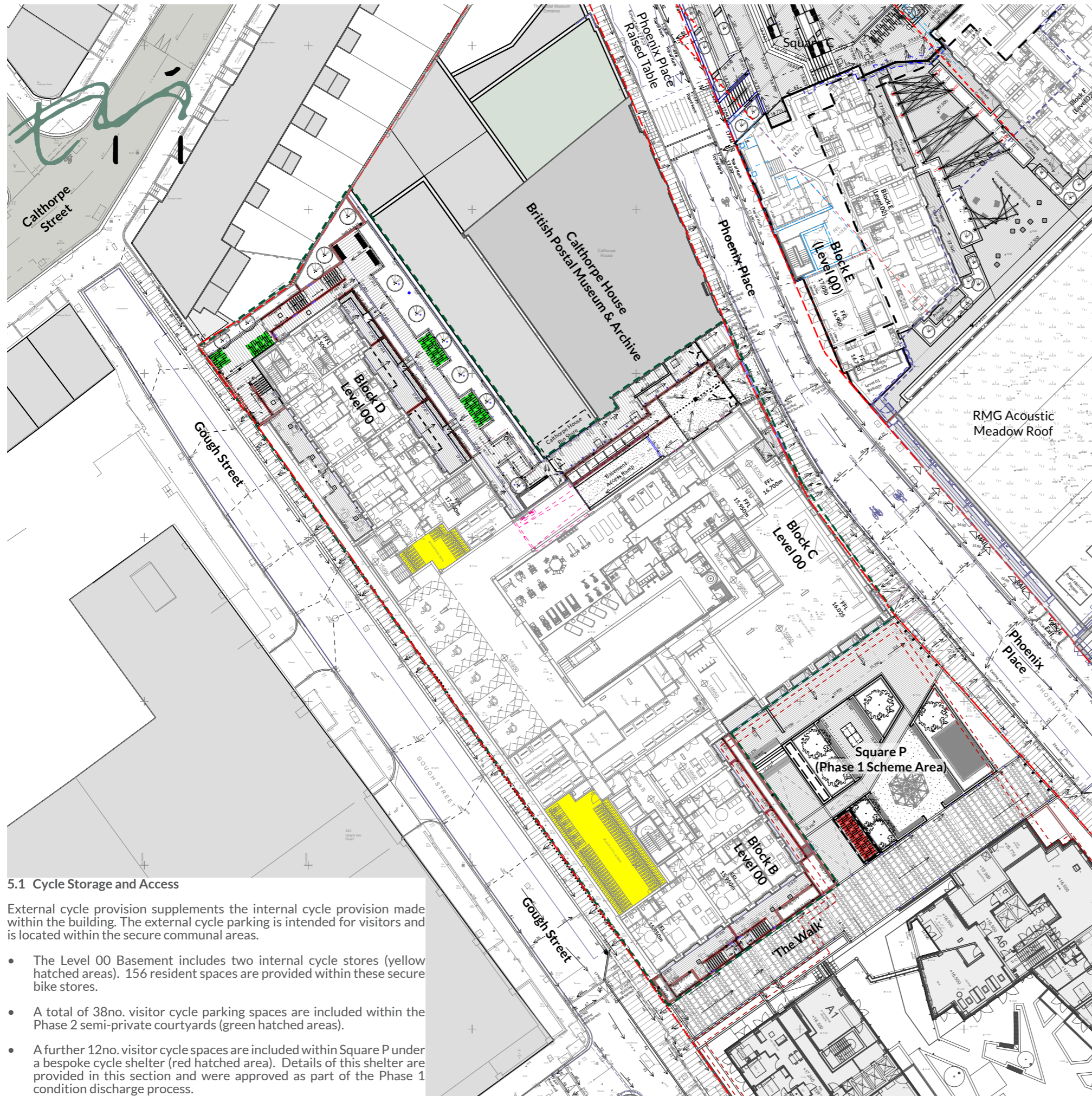
5.1 Cycle Storage and Access

Condition 19:

Details of the layout, design and appearance of the bicycle storage areas shall be submitted to and approved in writing by the Local Planning Authority prior to any superstructure works commencing on the relevant Section.

The provision shall comprise at least 275 residential occupier cycle spaces with the southern Section comprising building A and at least 156 residential occupier cycle spaces with the northern Section comprising buildings B, C & D, 36 residential visitor spaces and 7 commercial occupier spaces) shown on the approved drawings as set out in condition 2 above, and end of trip cyclist facilities.

The approved cycle storage / facilities shall be provided in full within each Section prior to the first occupation of the relevant use within that Section, and thereafter retained, unless otherwise approved in writing by the Local Planning Authority.

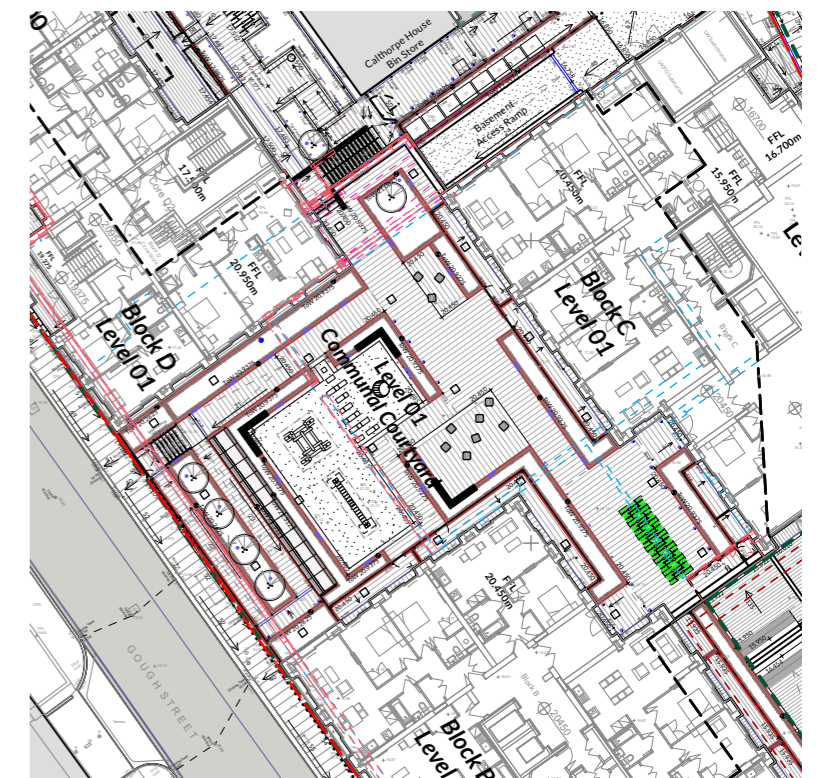


5.1 Cycle Storage and Access

External cycle provision supplements the internal cycle provision made within the building. The external cycle parking is intended for visitors and is located within the secure communal areas.

- The Level 00 Basement includes two internal cycle stores (yellow hatched areas). 156 resident spaces are provided within these secure bike stores.
- A total of 38no. visitor cycle parking spaces are included within the Phase 2 semi-private courtyards (green hatched areas).
- A further 12no. visitor cycle spaces are included within Square P under a bespoke cycle shelter (red hatched area). Details of this shelter are provided in this section and were approved as part of the Phase 1 condition discharge process.

5.1 Level 00 Cycle Parking Spaces



5.1 Level 01 Cycle Parking Spaces