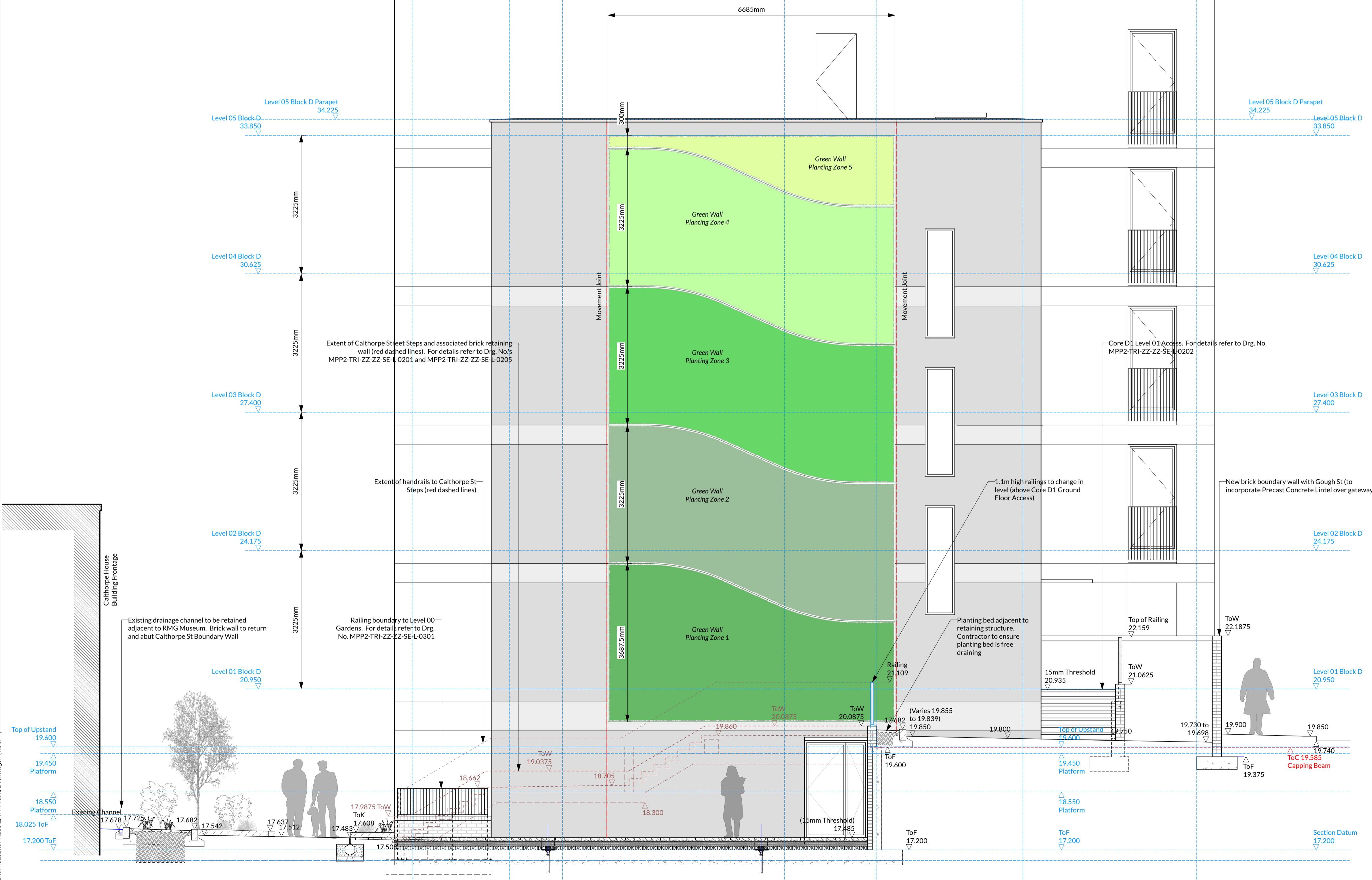


Illustrative 3D View - Block D Green Wall



Scale: 1:50 at A1  
Section Arrangement - Core D1 Ground Floor Access & Green Wall

- NOTES**
- All dimensions in millimetres unless otherwise shown.
  - All levels in metres above Ordnance Datum (mAOOD) unless otherwise shown.
  - All dimensions to be checked on site and any discrepancies reported to Landscape Architect or Employer before pricing / work starts.
  - Any ambiguities or discrepancies within this drawing and any other information given elsewhere must be reported to the Landscape Architect or the Employer for clarification before pricing or construction works commence.
  - All drawings to be read in conjunction with other drawings and specification information as appropriate.
  - Refer to relevant Engineer's and Architect's information as appropriate for confirmation of all engineering and architectural details (including base and sub-base formation layers).
  - All works to be carried out in accordance with the latest British Standards and appropriate codes of practice as a minimum.

**BLOCK D PLANTED GREEN WALL**  
A planted Green Wall system is to be installed to the north elevation of Block D. The Green Wall will provide the adjacent residents of Calthorpe Street with a soft visual façade.

The proposed Green Wall specification must be sympathetic to its northern aspect with appropriate plant species selected to ensure the successful long-term establishment of the planting.  
Exact details of Green Wall system to be coordinated with a Specialist Supplier of Green Wall systems who will install and subsequently maintain the planting system.

**GREEN WALL SUPPLIER**  
Green Wall Supplier to have demonstrable experience of Green Wall (planted 'living wall') installation and to be approved by Landscape Architect.  
Possible Supplier  
ANS Global  
<https://www.ansgroupglobal.com>  
Contact: Scott Anderson, Mobile: 07848 455133 Email: scott.anderson@ans-global

**PLANTING, FABRICATION DRAWINGS AND SETTING OUT**  
Green Wall Supplier to produce fabrication drawings for approval by Landscape Architect following a detailed on-site survey of the 'as-built' architectural finishes.  
Green Wall dimensions to be based upon details and dimensions shown and must be coordinated with the architectural finishes.  
Green Wall width to correspond with 'as-built' movement joint locations within architectural brickwork.  
Specialist Green Wall Supplier to provide Landscape Architect with detailed planting lists for each planting zone (zones 1, 2, 3, 4, and 5 as shown).

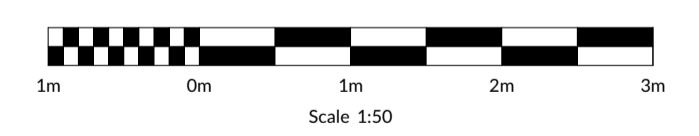
The planting strategy will seek to achieve a subtle gradation of green foliage as shown. Darker green foliage to the bottom of the planted wall through to lighter green foliage at the top.  
The level of each planting 'colour zone' is to correspond with the brick banding of the architectural finishes. Green Wall Supplier to note that each architectural floor level is identified within the façade brickwork by a 450mm high band of 30mm thick bricks (215mm x 30mm x 102.5mm bricks).  
Initial sample panel to be made available for inspection and comment by Landscape Architect in advance of full production and delivery to site.  
Green Wall Supplier to confirm interface between bottom drainage channel, associated downpipe and adjacent external landscape finishes (including railing arrangement and planting bed). Green Wall Supplier to inform Landscape Architect of any changes required to arrangement of nearby walls, railings, planting beds etc.  
All plants to be a full and well formed example of its type, with fully established roots having been grown in the specified container for at least a full season. Landscape Architect to approve any cutting back of flowering plants during the pre-delivery period.  
Plant stock to comply with BS 3936 'Nursery stock. Specification for trees and shrubs'. Handling of plants to be undertaken according to The Horticultural Trades Association (HTA) National Plant Specification (including Appendix 1, 2 and 3). To also comply with the Landscape Institute and HTA guidance: 'The Committee for Plant Handling and Establishment Part 3 - Recommendations for Plant Handling from Delivery to Successful Establishment'.  
Crushed or broken plants damaged during transport are not acceptable. Landscape Architect and Green Wall Supplier to review installed Green Wall and agree replacement strategy for any damaged planting prior to Practical Completion.  
Green Wall to include appropriate powder coated steel flashing arrangement so that sides, top and bottom of planting modules, wall mounting battens, all fixings etc are not visible.  
Details of all fixing rails, mounting battens and waterproof membranes to be supplied to the Architect for approval.

**MAINTENANCE**  
Green Wall costs to allow for separate ongoing maintenance contract. Monthly visits during the 12 months Defects and Liability Period. Quarterly visits during the subsequent ongoing maintenance contract with the Clients Property Management Company.  
Green Wall Supplier to provide a written 'Green Wall Management Plan' which sets out the long-term design objectives, management responsibilities and long-term maintenance requirements for all 'living wall' planting. The Green Wall Management Plan must provide a summary of all the maintenance operations required to ensure the successful establishment of the Green Wall. This plan will form the basis for any agreements between the Contractor and the Clients Property Management Company that will maintain the site following the Defects Liability Period.

The written 'Green Wall Management Plan' must also set out the required access and maintenance strategy for the Green Wall system. Exact details of building access and abseil rope connection points to be agreed with Architect.  
**IRRIGATION SYSTEM**  
Green Wall to be irrigated by automatic drip irrigation system from potable water mains. Exact details to be confirmed with M&E Engineer along with all plant and associated pumping systems.

Specialist Green Wall Supplier to source an appropriate irrigation system design that ensures sufficient application rates of potable water for long-term plant establishment.  
Irrigation system to fulfil the Client's long-term maintenance requirements. Exact details to be agreed with Client, Landscape Architect and M&E Engineer.  
Specialist Green Wall Supplier to provide 12 month guarantee for all materials and workmanship.  
Specialist Green Wall Supplier to provide Client with hand-over operations manual that describes long-term maintenance requirements and operating instructions. System to be drained down in the winter to prevent frost damage and re-commissioned in the early spring (subject to Specialist Supplier comments).  
Specialist Irrigation Supplier to advise Client on precautions required against airborne contamination from water outlets (Legionnaires Disease). Irrigation system to correspond with Health & Safety Executive 'Approved Code of Practice Control of Legionnaires Disease and Management in Water Systems'.

M&E Engineer to review irrigation proposals and confirm any restrictions regarding water supply, water storage, pipe runs etc. M&E Engineer to coordinate any legal permissions that may be required and ensure they are in place before installation begins.  
M&E Engineer to confirm appropriate location for all control equipment, pipe runs, slab penetrations etc. M&E Engineer to detail distribution pipework from appropriate plant room to the planting areas. This must provide an adequate connection point for the proposed irrigation system (the delivery of a pressurized water supply to the irrigation system).  
M&E Engineer to liaise with Specialist Supplier to confirm irrigation system requirements.



|      |            |                                      |             |             |
|------|------------|--------------------------------------|-------------|-------------|
| Rev: | Date:      | Description:                         | Revised by: | Checked by: |
| P00  | 02.03.2022 | -Draft for coordination discussions. | DWJ         | KMW         |

Tri External Landscape Design LLP  
www.tri.co.uk

Mount Pleasant Phase 2, London  
Taylor Wimpey Central London

Section Arrangement - Block D Green Wall

|                               |           |             |
|-------------------------------|-----------|-------------|
| Status:                       | Drawn by: | Checked by: |
| (S1) Issued for co-ordination | DWJ       | KMW         |
| Drawing Number:               | Revision: | Scale:      |
| MP2-TRI-ZZ-ZE-L-0208          | P01       | 1:50@A1     |
|                               |           | Date:       |
|                               |           | 02.03.2022  |