

General Notes

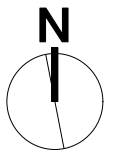
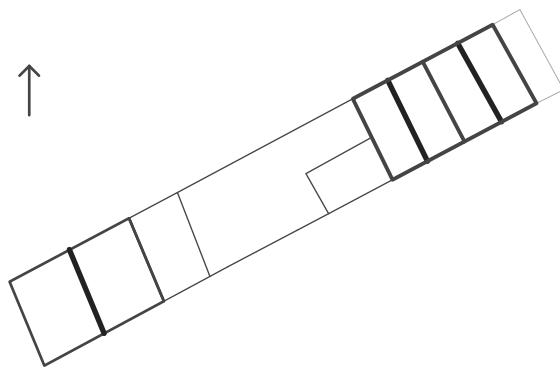
- All dimensions to be verified on site
- To be read in conjunction with all relevant documents
- In the event of discrepancy notify the Architect immediately
- All steel structural elements to be finished with intumescent coating, 30 minutes fire resistance. For all structural elements and connection see SE drawings.
- This document is copyright of Hugh Cullum Architects Ltd

Issue Status

- SK Sketch	- T Tender	- P Permissions
- D Design	- E Existing Condition	- C Contract

Latest Revisions

REV	NOTE	DATE	DRAWN
-----	------	------	-------



0m 10m 20m