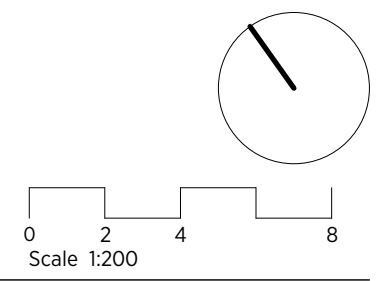
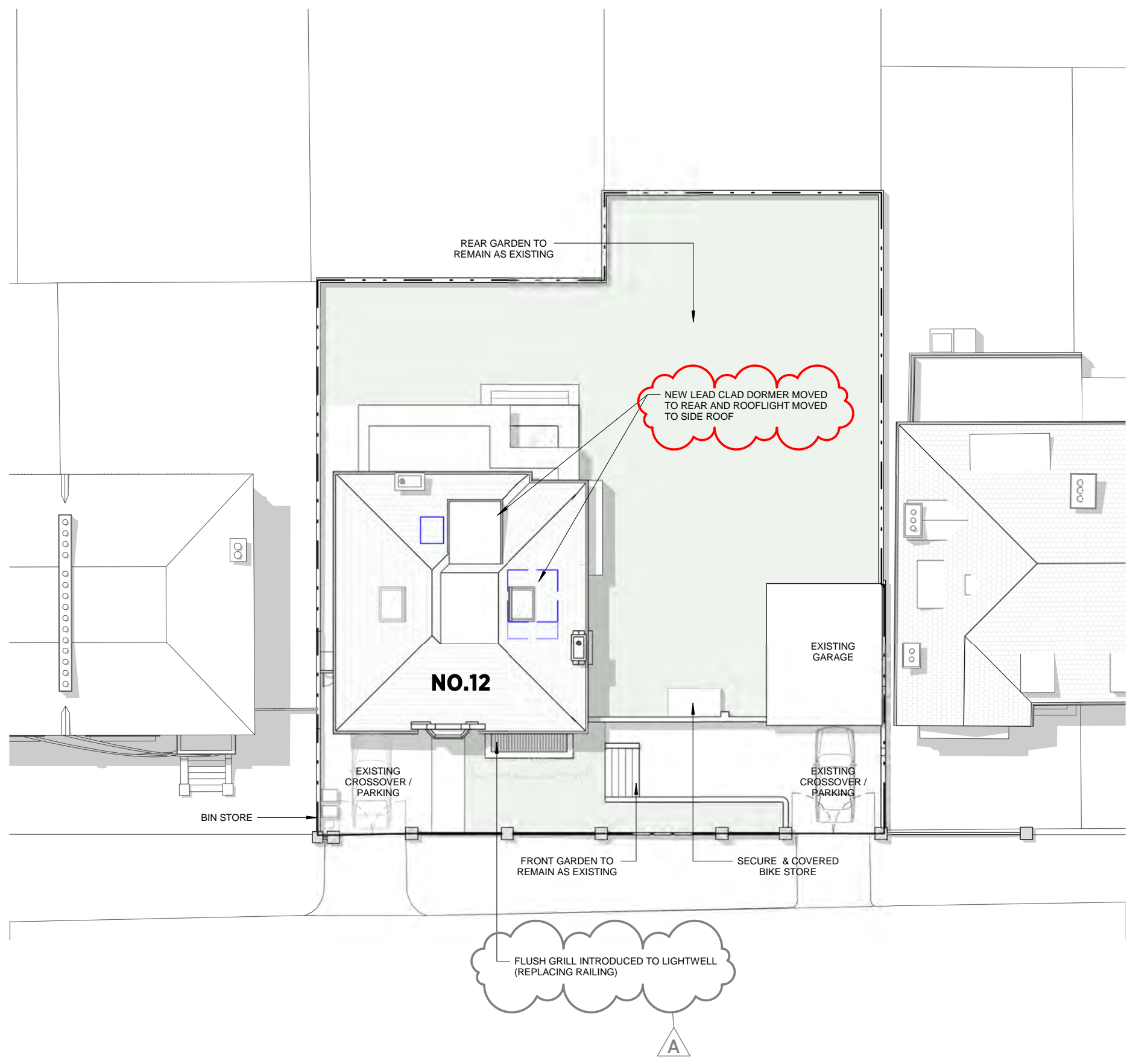


GENERAL NOTES:
 This drawing is copyright of KSR architects.
 This drawing must be read in conjunction with the Designer's Risk Assessment, specification and all other relevant documentation and drawings.
 KSR architects accept no liability for any expense, loss or damage of whatsoever nature and however arising from any variation made to this drawing or in the execution of the work to which it relates which has not been referred to them and their approval obtained.
 Areas are based on unchecked survey and are approximate only.
 Do not scale from this drawing or the digital data, only figured dimensions are to be used. Refer to linear scale for guidance.
 Check all dimensions on site prior to carrying out any works and advise any discrepancy



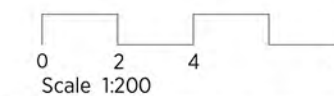
KSR ARCHITECTS & INTERIOR DESIGNERS
 KSR Architects LLP | 14 Greenland Street | London NW1 0ND
 Email: mail@ksrarchitects.com | Phone: +44 (0)20 7692 5000 | Website: www.ksrarchitects.com

12 Eldon Grove

Proposed Site Plan

Date: 03/02/22	Status: PLANNING
Scale: 1:200 @ A3	© KSR Architects
Project Ref: 20012-12	Drawing No: P-002
	Revision: B

GENERAL NOTES:
 This drawing is copyright of KSR architects.
 This drawing must be read in conjunction with the Designer's Risk Assessment, specification and all other relevant documentation and drawings.
 KSR architects accept no liability for any expense, loss or damage of whatsoever nature and however arising from any variation made to this drawing or in the execution of the work to which it relates which has not been referred to them and their approval obtained.
 Areas are based on unchecked survey and are approximate only.
 Do not scale from this drawing or the digital data, only figured dimensions are to be used. Refer to linear scale for guidance.
 Check all dimensions on site prior to carrying out any works and advise any discrepancy



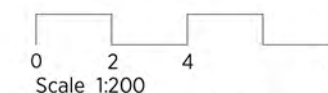
KSR ARCHITECTS & INTERIOR DESIGNERS
 KSR Architects LLP mail@ksrarchitects.com
 14 Greentand Street t: +44 (0)20 7692 5000
 London NW1 0ND www.ksrarchitects.com

12 Eldon Grove

Proposed Street Elevation

Date: 03/02/22	Status: PLANNING
Scale: 1:200 @ A3	© KSR Architects
Project Ref: 20012-12	Drawing No: P-003 Revision: A

GENERAL NOTES:
 This drawing is copyright of KSR architects.
 This drawing must be read in conjunction with the Designer's Risk Assessment, specification and all other relevant documentation and drawings.
 KSR architects accept no liability for any expense, loss or damage of whatsoever nature and however arising from any variation made to this drawing or in the execution of the work to which it relates which has not been referred to them and their approval obtained.
 Areas are based on unchecked survey and are approximate only.
 Do not scale from this drawing or the digital data, only figured dimensions are to be used. Refer to linear scale for guidance.
 Check all dimensions on site prior to carrying out any works and advise any discrepancy



KSR ARCHITECTS & INTERIOR DESIGNERS
 KSR Architects LLP mail@ksrarchitects.com
 14 Greentand Street t: +44 (0)20 7692 5000
 London NW1 0ND www.ksrarchitects.com

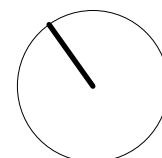
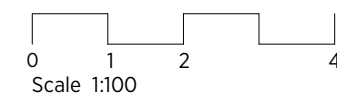
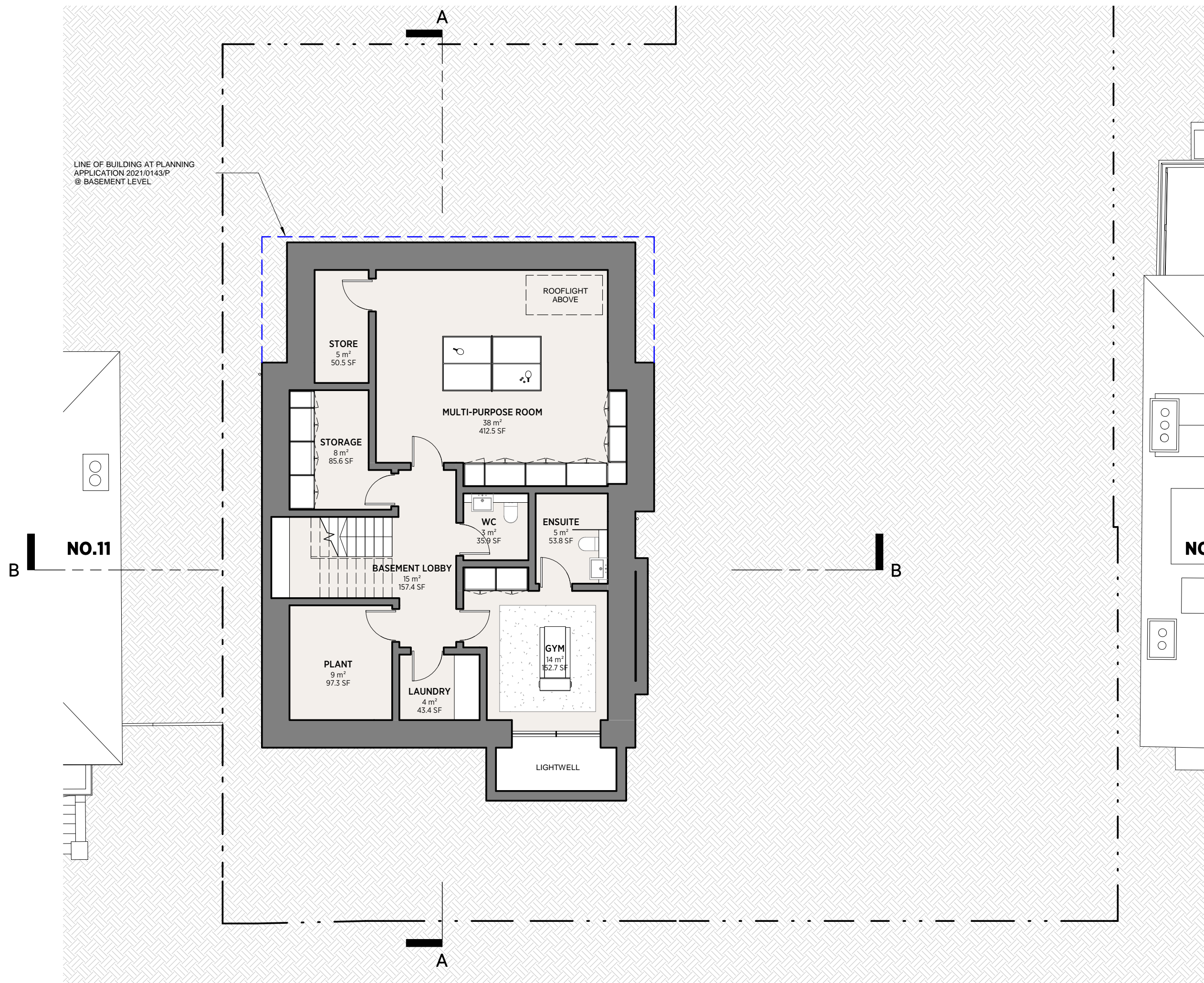
12 Eldon Grove

Proposed Rear Elevation

Date: 03/02/22	Status: PLANNING
Scale: 1:200 @ A3	© KSR Architects
Project Ref: 20012-12	Drawing No: P-004 Revision: A

GENERAL NOTES:
 This drawing is copyright of KSR architects.
 This drawing must be read in conjunction with the Designer's Risk Assessment, specification and all other relevant documentation and drawings.
 KSR architects accept no liability for any expense, loss or damage of whatsoever nature and however arising from any variation made to this drawing or in the execution of the work to which it relates which has not been referred to them and their approval obtained.
 Areas are based on unchecked survey and are approximate only.
 Do not scale from this drawing or the digital data, only figured dimensions are to be used. Refer to linear scale for guidance.
 Check all dimensions on site prior to carrying out any works and advise any discrepancy

LINE OF BUILDING AT PLANNING APPLICATION 2021/0143/P @ BASEMENT LEVEL



KSR ARCHITECTS & INTERIOR DESIGNERS

KSR Architects LLP
 14 Greenland Street
 London NW1 0ND

mail@ksrarchitects.com
 t: +44 (0)20 7692 5000
 www.ksrarchitects.com

12 Eldon Grove

Proposed Basement

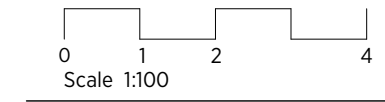
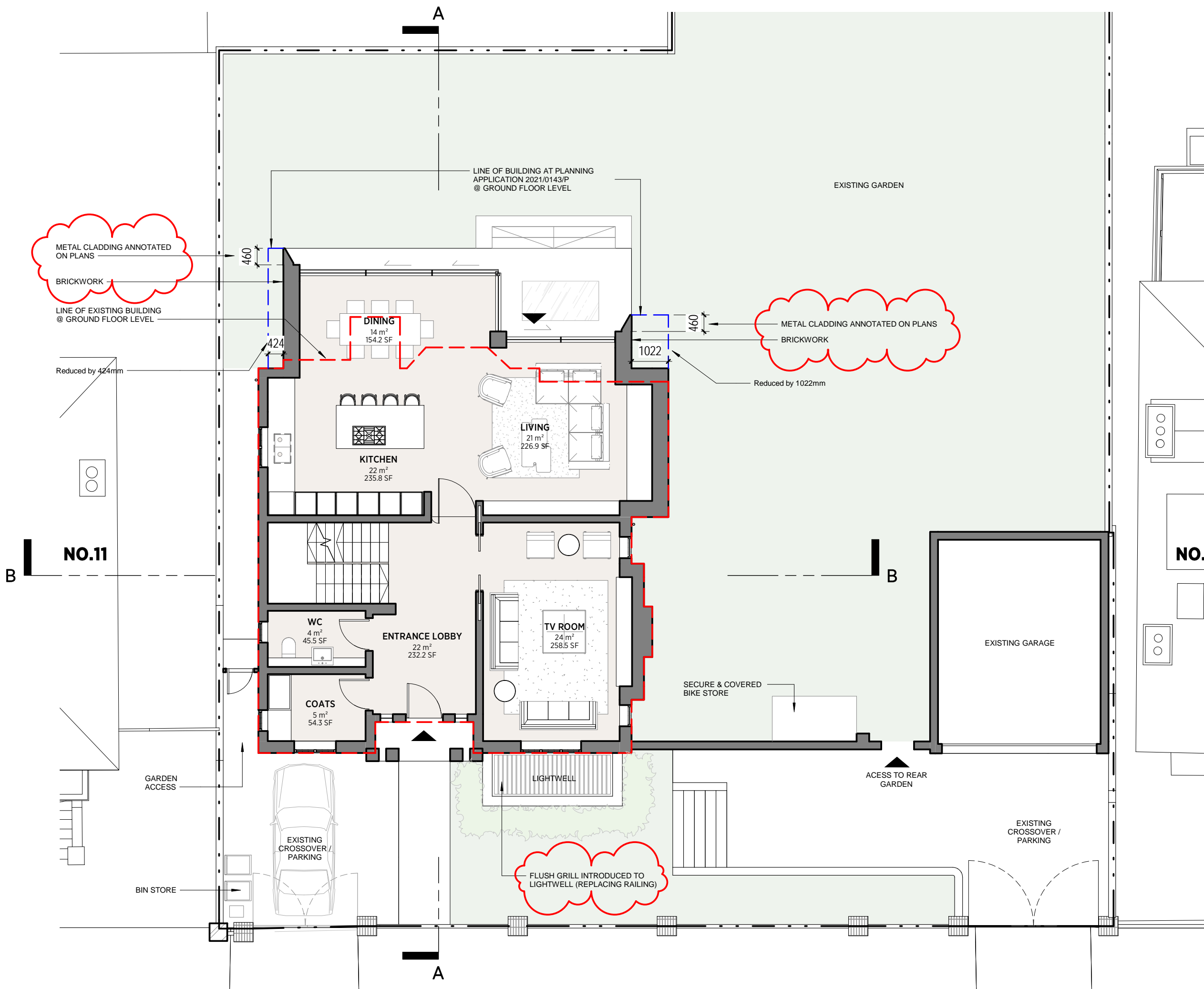
Date: 03/02/22 Status: PLANNING

Scale: 1:100 @ A3 © KSR Architects

Project Ref: Drawing No: Revision:

20012-12 P-090

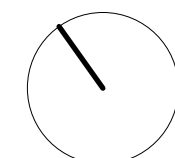
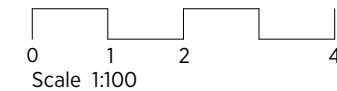
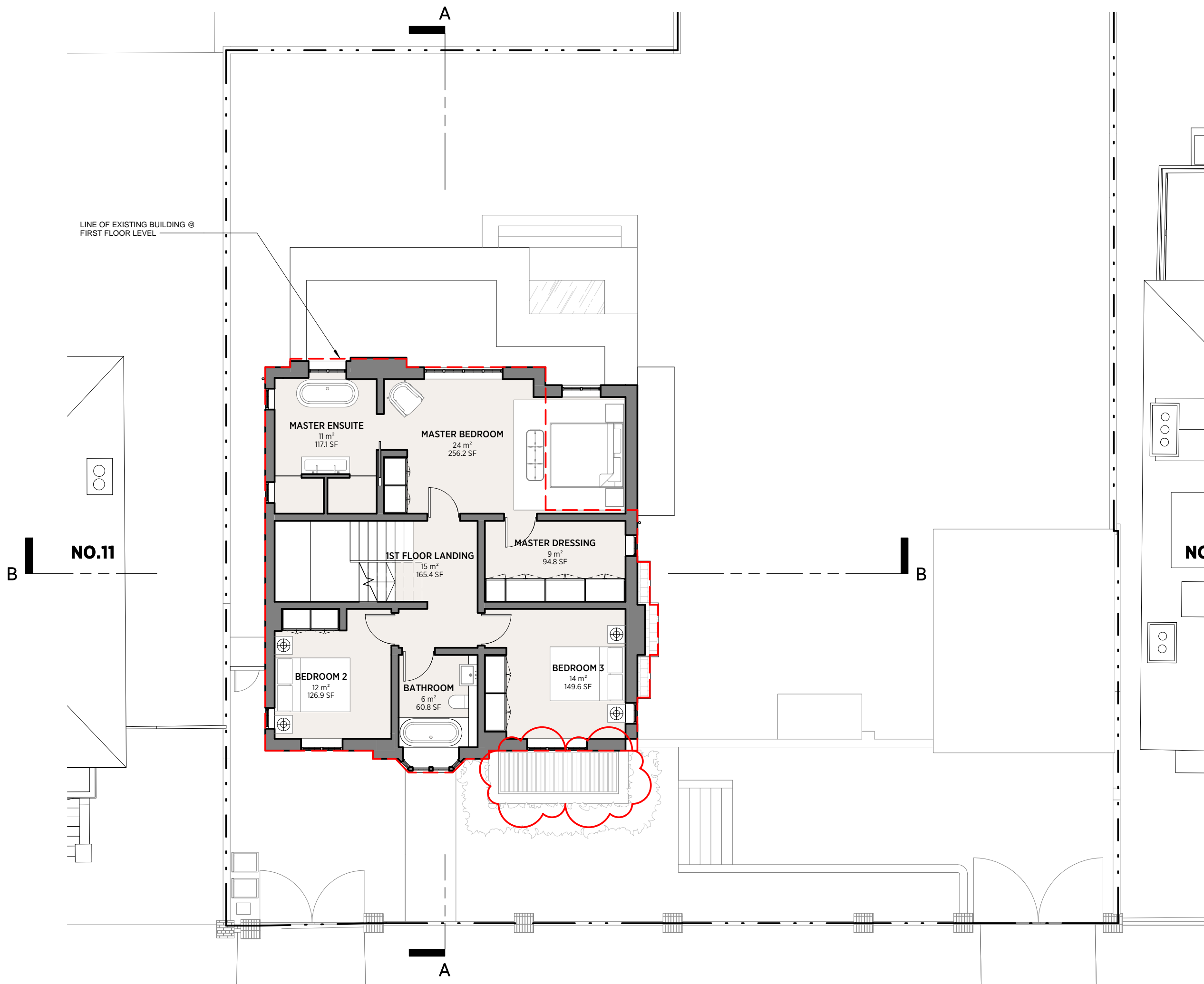
GENERAL NOTES:
 This drawing is copyright of KSR architects.
 This drawing must be read in conjunction with the Designer's Risk Assessment, specification and all other relevant documentation and drawings.
 KSR architects accept no liability for any expense, loss or damage of whatsoever nature and however arising from any variation made to this drawing or in the execution of the work to which it relates which has not been referred to them and their approval obtained.
 Areas are based on unchecked survey and are approximate only.
 Do not scale from this drawing or the digital data, only figured dimensions are to be used. Refer to linear scale for guidance.
 Check all dimensions on site prior to carrying out any works and advise any discrepancy



KSR ARCHITECTS & INTERIOR DESIGNERS
 KSR Architects LLP | 14 Greenland Street | London NW1 0ND
 Email: mail@ksrarchitects.com | Phone: +44 (0)20 7692 5000 | Website: www.ksrarchitects.com

12 Eldon Grove
Proposed Ground Floor
 Date: 03/02/22 | Status: PLANNING
 Scale: 1:100 @ A3 | © KSR Architects
 Project Ref: 20012-12 | Drawing No: P-100 | Revision: A

GENERAL NOTES:
 This drawing is copyright of KSR architects.
 This drawing must be read in conjunction with the Designer's Risk Assessment, specification and all other relevant documentation and drawings.
 KSR architects accept no liability for any expense, loss or damage of whatsoever nature and however arising from any variation made to this drawing or in the execution of the work to which it relates which has not been referred to them and their approval obtained.
 Areas are based on unchecked survey and are approximate only.
 Do not scale from this drawing or the digital data, only figured dimensions are to be used. Refer to linear scale for guidance.
 Check all dimensions on site prior to carrying out any works and advise any discrepancy



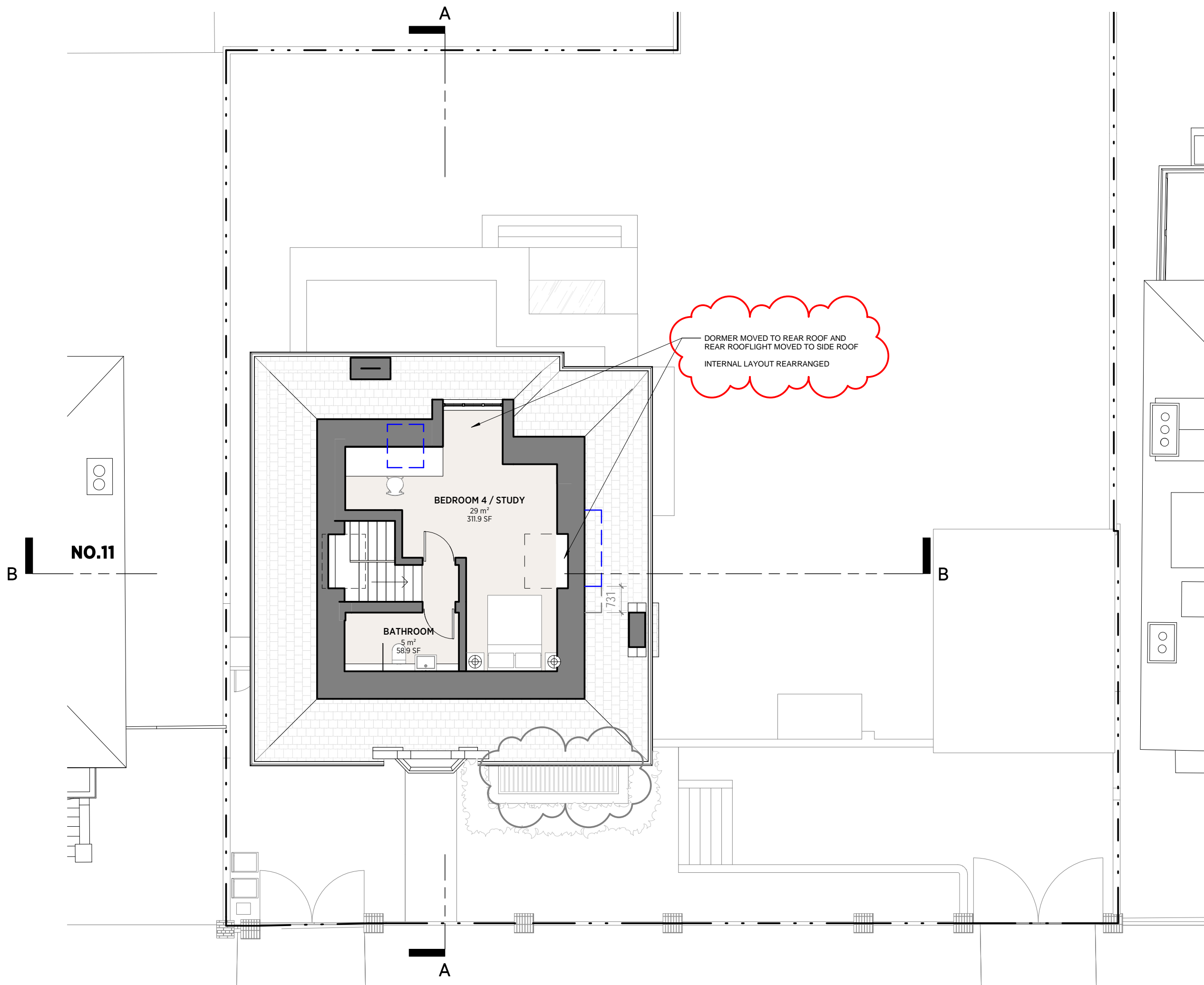
KSR ARCHITECTS & INTERIOR DESIGNERS
 KSR Architects LLP | 14 Greenland Street | London NW1 0ND
 mail@ksrarchitects.com | t: +44 (0)20 7692 5000 | www.ksrarchitects.com

12 Eldon Grove

Proposed First Floor

Date: 03/02/22	Status: PLANNING
Scale: 1:100 @ A3	© KSR Architects
Project Ref: 20012-12	Drawing No: P-110
	Revision: A

GENERAL NOTES:
 This drawing is copyright of KSR architects.
 This drawing must be read in conjunction with the Designer's Risk Assessment, specification and all other relevant documentation and drawings.
 KSR architects accept no liability for any expense, loss or damage of whatsoever nature and however arising from any variation made to this drawing or in the execution of the work to which it relates which has not been referred to them and their approval obtained.
 Areas are based on unchecked survey and are approximate only.
 Do not scale from this drawing or the digital data, only figured dimensions are to be used. Refer to linear scale for guidance.
 Check all dimensions on site prior to carrying out any works and advise any discrepancy



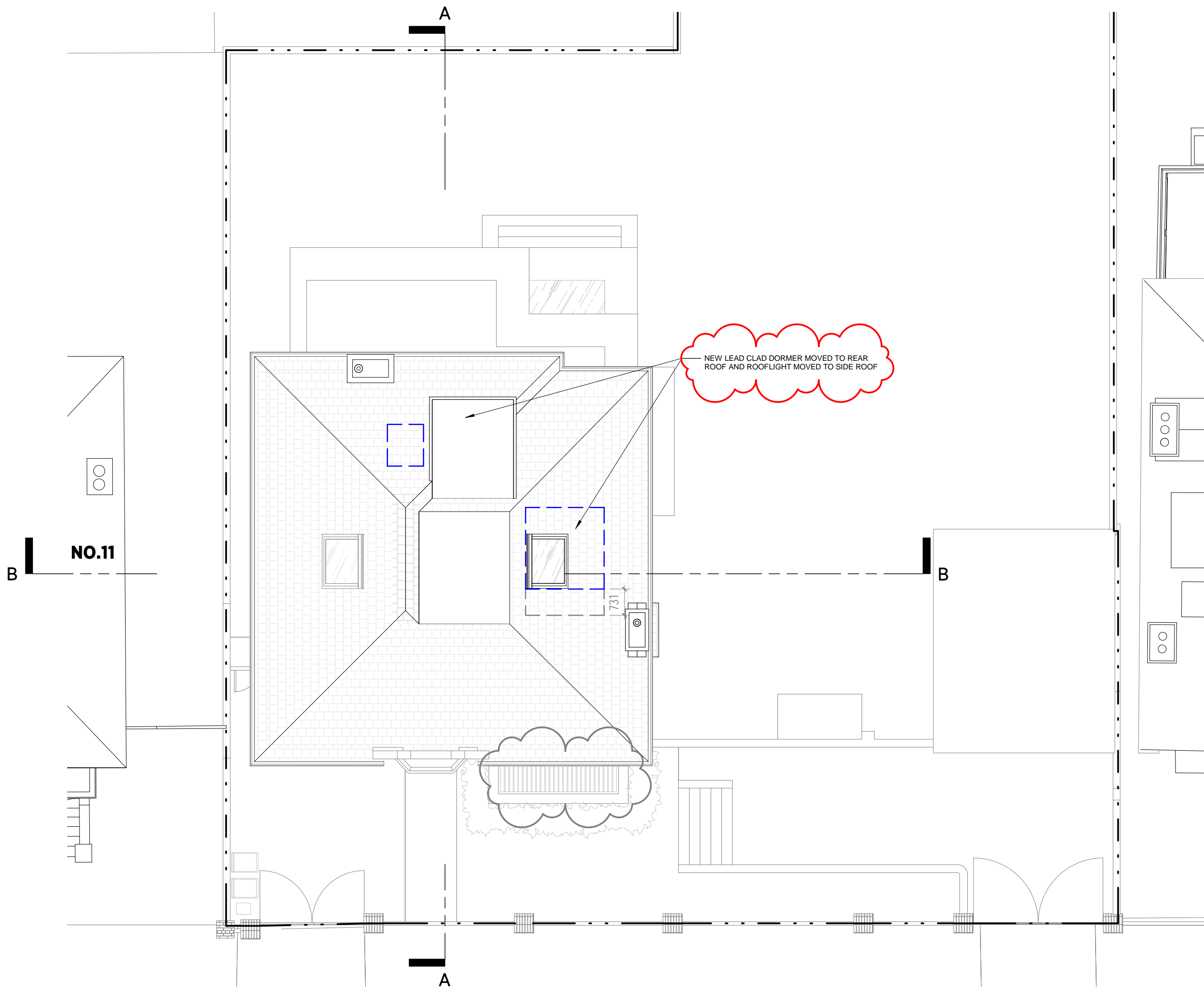
KSR ARCHITECTS & INTERIOR DESIGNERS
 KSR Architects LLP 14 Greenland Street London NW1 0ND
 mail@ksrarchitects.com t: +44 (0)20 7692 5000 www.ksrarchitects.com

12 Eldon Grove

Proposed Second Floor

Date: 03/02/22	Status: PLANNING
Scale: 1:100 @ A3	© KSR Architects
Project Ref: 20012-12	Drawing No: P-120
	Revision: B

GENERAL NOTES:
 This drawing is copyright of KSR architects.
 This drawing must be read in conjunction with the Designer's Risk Assessment, specification and all other relevant documentation and drawings.
 KSR architects accept no liability for any expense, loss or damage of whatsoever nature and however arising from any variation made to this drawing or in the execution of the work to which it relates which has not been referred to them and their approval obtained.
 Areas are based on unchecked survey and are approximate only.
 Do not scale from this drawing or the digital data, only figured dimensions are to be used. Refer to linear scale for guidance.
 Check all dimensions on site prior to carrying out any works and advise any discrepancy



NEW LEAD CLAD DORMER MOVED TO REAR ROOF AND ROOFLIGHT MOVED TO SIDE ROOF

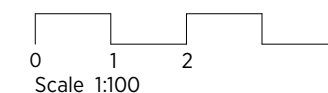
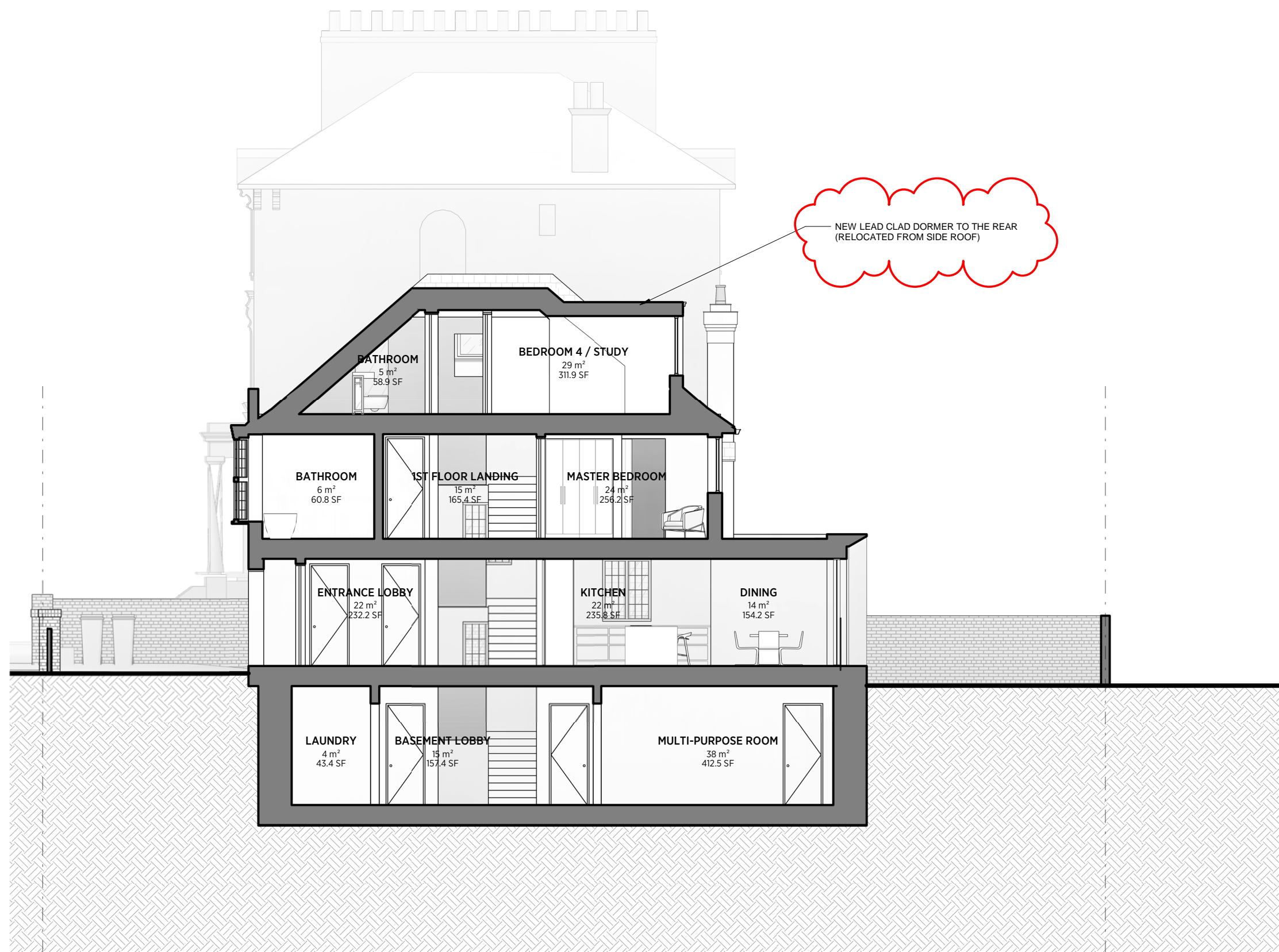
KSR ARCHITECTS & INTERIOR DESIGNERS
 KSR Architects LLP mail@ksrarchitects.com
 14 Greenland Street t: +44 (0)20 7692 5000
 London NW1 0ND www.ksrarchitects.com

12 Eldon Grove

Proposed Roof

Date: 03/02/22	Status: PLANNING
Scale: 1:100 @ A3	© KSR Architects
Project Ref: 20012-12	Drawing No: P-130 Revision: B

GENERAL NOTES:
 This drawing is copyright of KSR architects.
 This drawing must be read in conjunction with the Designer's Risk Assessment, specification and all other relevant documentation and drawings.
 KSR architects accept no liability for any expense, loss or damage of whatsoever nature and however arising from any variation made to this drawing or in the execution of the work to which it relates which has not been referred to them and their approval obtained.
 Areas are based on unchecked survey and are approximate only.
 Do not scale from this drawing or the digital data, only figured dimensions are to be used. Refer to linear scale for guidance.
 Check all dimensions on site prior to carrying out any works and advise any discrepancy



KSR ARCHITECTS & INTERIOR DESIGNERS

KSR Architects LLP
 14 Greenland Street
 London NW1 0ND

mail@ksrarchitects.com
 t: +44 (0)20 7692 5000
 www.ksrarchitects.com

12 Eldon Grove

Proposed Section A

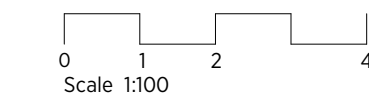
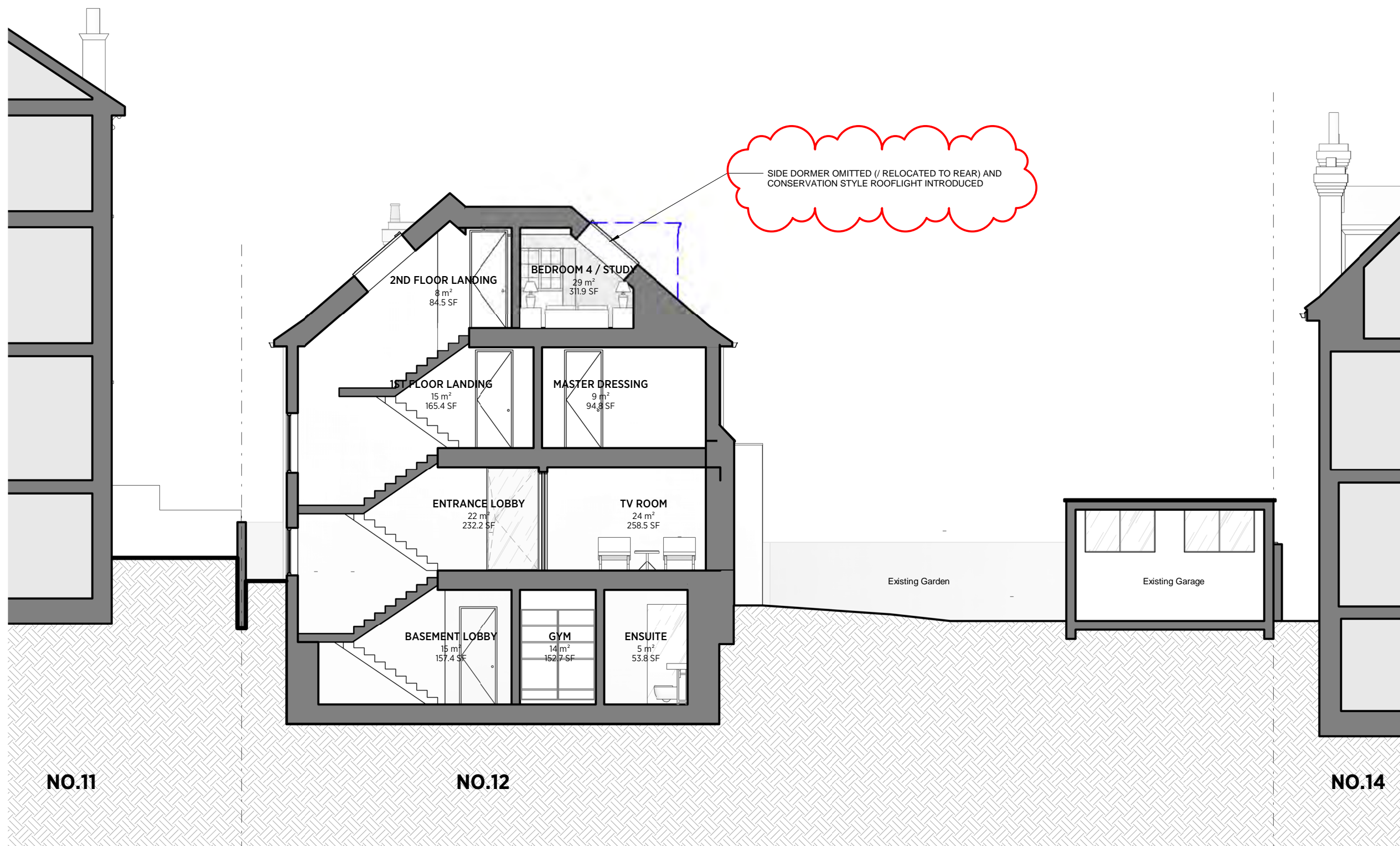
Date: 03/02/22 Status: PLANNING

Scale: 1:100 @ A3 © KSR Architects

Project Ref: Drawing No: Revision:

20012-12 P-200 A

GENERAL NOTES:
 This drawing is copyright of KSR architects.
 This drawing must be read in conjunction with the Designer's Risk Assessment, specification and all other relevant documentation and drawings.
 KSR architects accept no liability for any expense, loss or damage of whatsoever nature and however arising from any variation made to this drawing or in the execution of the work to which it relates which has not been referred to them and their approval obtained.
 Areas are based on unchecked survey and are approximate only.
 Do not scale from this drawing or the digital data, only figured dimensions are to be used. Refer to linear scale for guidance.
 Check all dimensions on site prior to carrying out any works and advise any discrepancy



KSR ARCHITECTS & INTERIOR DESIGNERS
 KSR Architects LLP mail@ksrarchitects.com
 14 Greenland Street t: +44 (0)20 7692 5000
 London NW1 0ND www.ksrarchitects.com

12 Eldon Grove

Proposed Section B

Date: 03/02/22	Status: PLANNING
Scale: 1:100 @ A3	© KSR Architects
Project Ref: 20012-12	Drawing No: P-201
	Revision: A

GENERAL NOTES:
 This drawing is copyright of KSR architects.
 This drawing must be read in conjunction with the Designer's Risk Assessment, specification and all other relevant documentation and drawings.
 KSR architects accept no liability for any expense, loss or damage of whatsoever nature and however arising from any variation made to this drawing or in the execution of the work to which it relates which has not been referred to them and their approval obtained.
 Areas are based on unchecked survey and are approximate only.
 Do not scale from this drawing or the digital data, only figured dimensions are to be used. Refer to linear scale for guidance.
 Check all dimensions on site prior to carrying out any works and advise any discrepancy



No.12 MATERIAL KEY

- 1 EXISTING BRICKWORK or NEW BRICKWORK TO MATCH EXISTING
- 2 METAL CLADDING
- 3 NEW METAL FRAME WINDOWS (TO MATCH EXISTING)
- 4 SLIMLINE ALUMINUM WINDOWS / DOORS
- 5 FLUSH GRILL TO LIGHTWELL
- 6 OBSCURE GLAZING
- 7 NEW RED CLAY ROOF TILES (TO MATCH EXISTING)

NOTE: All existing windows to be replaced with double-glazed metal windows to match existing

KSR ARCHITECTS & INTERIOR DESIGNERS

KSR Architects LLP
 14 Greenlands Street
 London NW1 0ND

mail@ksrarchitects.com
 t: +44 (0)20 7692 5000
 www.ksrarchitects.com

12 Eldon Grove

Proposed Front Elevation

Date: 03/02/22	Status: PLANNING
Scale: 1:100 @ A3	© KSR Architects
Project Ref: 20012-12	Drawing No: P-300
	Revision: B

GENERAL NOTES:
 This drawing is copyright of KSR architects.
 This drawing must be read in conjunction with the Designer's Risk Assessment, specification and all other relevant documentation and drawings.
 KSR architects accept no liability for any expense, loss or damage of whatsoever nature and however arising from any variation made to this drawing or in the execution of the work to which it relates which has not been referred to them and their approval obtained.
 Areas are based on unchecked survey and are approximate only.
 Do not scale from this drawing or the digital data, only figured dimensions are to be used. Refer to linear scale for guidance.
 Check all dimensions on site prior to carrying out any works and advise any discrepancy

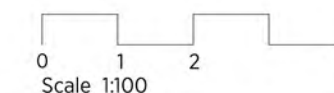


No. 12 MATERIAL KEY

- 1 EXISTING BRICKWORK or NEW BRICKWORK TO MATCH EXISTING
- 2 METAL CLADDING
- 3 NEW METAL FRAME WINDOWS (TO MATCH EXISTING)
- 4 SLIMLINE ALUMINUM WINDOWS / DOORS
- 5 FLUSH GRILL TO LIGHTWELL
- 6 OBSCURE GLAZING
- 7 NEW RED CLAY ROOF TILES (TO MATCH EXISTING)

NOTE: All existing windows to be replaced with double-glazed metal windows to match existing

Flush grill introduced to lightwell (replacing metal balustrade)



KSR ARCHITECTS & INTERIOR DESIGNERS

KSR Architects LLP
 14 Greentand Street
 London NW1 0ND

mail@ksrarchitects.com
 t: +44 (0)20 7692 5000
 www.ksrarchitects.com

12 Eldon Grove

Proposed Side Elevation 1

Date: 03/02/22	Status: PLANNING
Scale: 1:100 @ A3	© KSR Architects
Project Ref: 20012-12	Drawing No: P-301
	Revision: B

GENERAL NOTES:
 This drawing is copyright of KSR architects.
 This drawing must be read in conjunction with the Designer's Risk Assessment, specification and all other relevant documentation and drawings.
 KSR architects accept no liability for any expense, loss or damage of whatsoever nature and however arising from any variation made to this drawing or in the execution of the work to which it relates which has not been referred to them and their approval obtained.
 Areas are based on unchecked survey and are approximate only.
 Do not scale from this drawing or the digital data, only figured dimensions are to be used. Refer to linear scale for guidance.
 Check all dimensions on site prior to carrying out any works and advise any discrepancy



NEW LEAD CLAD DORMER MOVED TO REAR ROOF AND CONSERVATION STYLE ROOFLIGHT MOVED TO SIDE ROOF

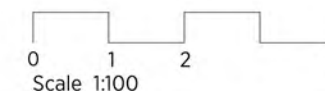
NEW EXTENDED SPAYED ROOF TO MATCH EXISTING ROOF WITH RED CLAY TILES

Flush grill introduced to lightwell (replacing metal balustrade)

No.12 MATERIAL KEY

- 1 EXISTING BRICKWORK or NEW BRICKWORK TO MATCH EXISTING
- 2 METAL CLADDING
- 3 NEW METAL FRAME WINDOWS (TO MATCH EXISTING)
- 4 SLIMLINE ALUMINUM WINDOWS / DOORS
- 5 FLUSH GRILL TO LIGHTWELL
- 6 OBSCURE GLAZING
- 7 NEW RED CLAY ROOF TILES (TO MATCH EXISTING)

NOTE: All existing windows to be replaced with double-glazed metal windows to match existing



KSR ARCHITECTS & INTERIOR DESIGNERS

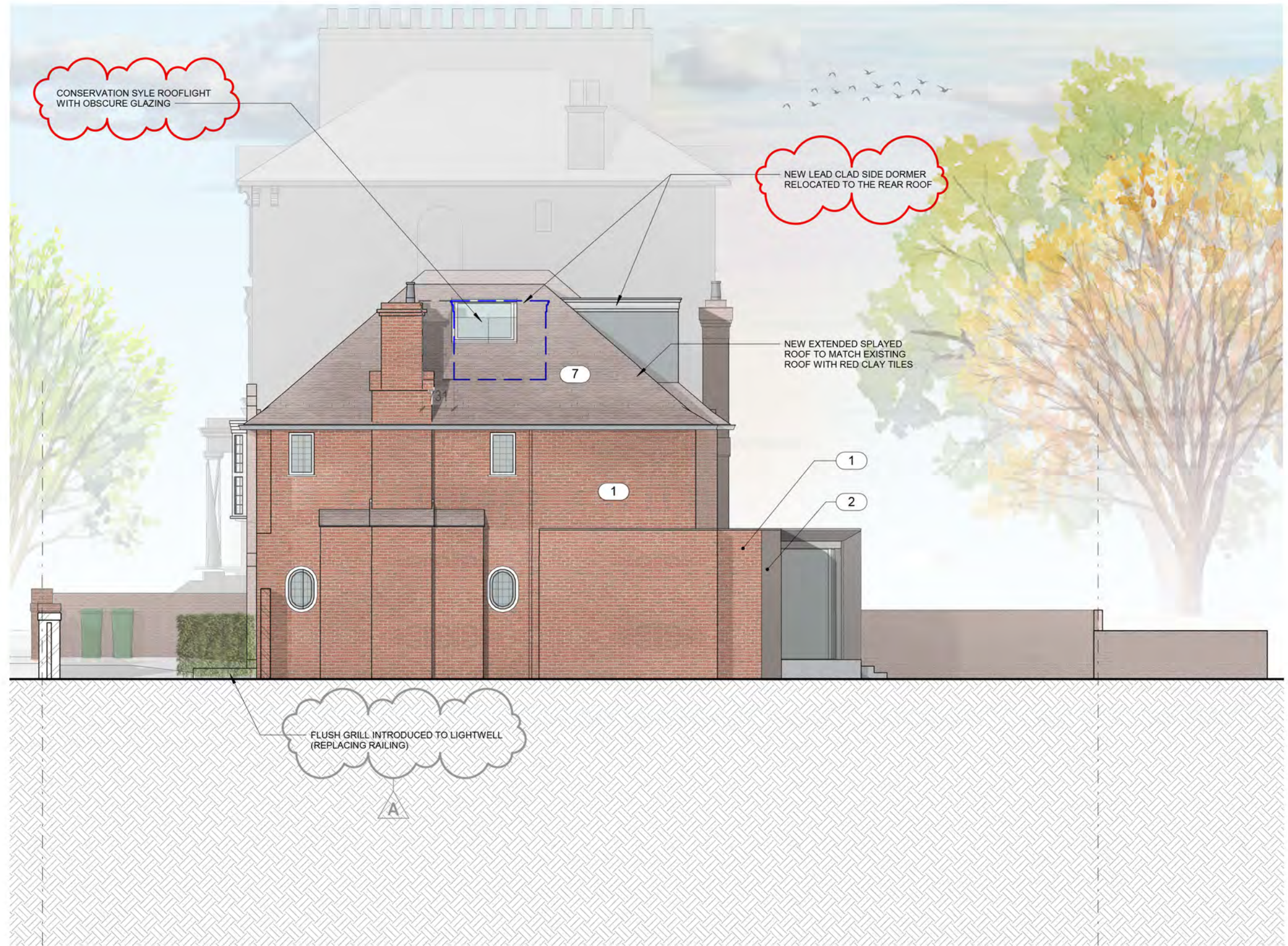
KSR Architects LLP
 14 Greenland Street
 London NW1 0ND

mail@ksrarchitects.com
 t: +44 (0)20 7692 5000
 www.ksrarchitects.com

12 Eldon Grove

Proposed Rear Elevation

Date: 03/02/22	Status: PLANNING
Scale: 1:100 @ A3	© KSR Architects
Project Ref: 20012-12	Drawing No: P-302
	Revision: B



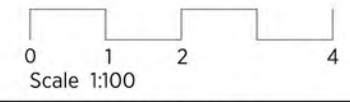
GENERAL NOTES:
 This drawing is copyright of KSR architects.
 This drawing must be read in conjunction with the Designer's Risk Assessment, specification and all other relevant documentation and drawings.
 KSR architects accept no liability for any expense, loss or damage of whatsoever nature and however arising from any variation made to this drawing or in the execution of the work to which it relates which has not been referred to them and their approval obtained.
 Areas are based on unchecked survey and are approximate only.
 Do not scale from this drawing or the digital data, only figured dimensions are to be used. Refer to linear scale for guidance.
 Check all dimensions on site prior to carrying out any works and advise any discrepancy

No.12 MATERIAL KEY

- 1 EXISTING BRICKWORK or NEW BRICKWORK TO MATCH EXISTING
- 2 METAL CLADDING
- 3 NEW METAL FRAME WINDOWS (TO MATCH EXISTING)
- 4 SLIMLINE ALUMINUM WINDOWS / DOORS
- 5 FLUSH GRILL TO LIGHTWELL
- 6 OBSCURE GLAZING
- 7 NEW RED CLAY ROOF TILES (TO MATCH EXISTING)

NOTE: All existing windows to be replaced with double-glazed metal windows to match existing

Flush grill introduced to lightwell (replacing metal balustrade)



KSR ARCHITECTS & INTERIOR DESIGNERS
 KSR Architects LLP mail@ksrarchitects.com
 14 Greentand Street t: +44 (0)20 7692 5000
 London NW1 0ND www.ksrarchitects.com

12 Eldon Grove

Proposed Side Elevation 2

Date: 03/02/22	Status: PLANNING
Scale: 1:100 @ A3	© KSR Architects
Project Ref: 20012-12	Drawing No: P-303 Revision: B