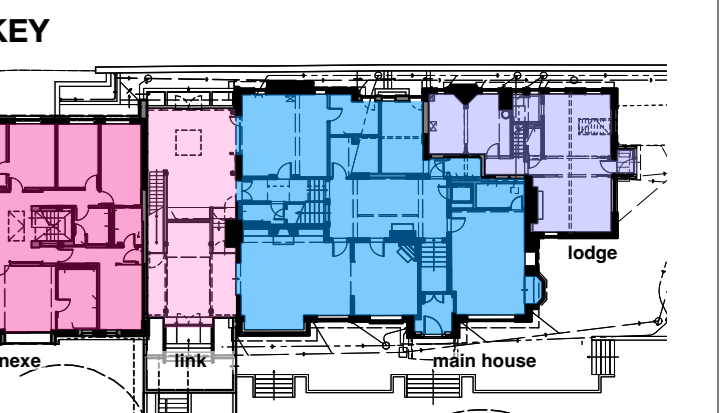


© BOWKER SADLER PARTNERSHIP LIMITED  
 THIS DRAWING IS THE SUBJECT OF COPYRIGHT WHICH VESTS IN BOWKER SADLER PARTNERSHIP LIMITED. IT IS AN INFRINGEMENT OF COPYRIGHT TO REPRODUCE THIS DRAWING, BY WHATEVER MEANS, INCLUDING ELECTRONIC, WITHOUT THE EXPRESS WRITTEN CONSENT OF BOWKER SADLER PARTNERSHIP LIMITED WHICH RESERVES ALL ITS RIGHTS.  
 BOWKER SADLER PARTNERSHIP LIMITED ASSERTS ITS RIGHTS TO BE IDENTIFIED AS THE AUTHOR OF THIS DESIGN.  
 ■ REPORT ERRORS & OMISSIONS TO ARCHITECT.  
 ■ CHECK ALL DIMENSIONS ON SITE.  
 ■ DRAWING TO BE READ IN CONJUNCTION WITH THE HEALTH AND SAFETY PLAN AND ALL RELEVANT RISK ASSESSMENTS.

Survey drawings are kindly provided by Mutton Hughes Land Surveyors Ltd and are assumed to accurately describe the existing buildings, services and external spaces.



- Windows**
- bhc bottom hung timber casement window
  - thc top hung timber casement window
  - shc side hung casement
  - vss vertical sliding sash timber window
  - fl fixed light timber window
  - rt roof light (flat roof)
  - vtf velux style roof light (pitched roof)
  - ort conservation style roof light (pitched roof)
  - h ceiling hatch
  - hf floor hatch
  - sd sliding door
  - sfd sliding folding door
- drainage services and landscape**
- mh Existing manhole
  - ic Existing inspection chamber
  - wic Existing water service inspection chamber
- FWIC 01**
- icw inspection chamber collecting foul water drainage
  - syp soil vent pipe and underground foul water drainage
  - wf waste pipe from washbasin/shower to foul water drainage
  - rwp rainwater pipe, gully and underground surface water drainage
  - rwp+h rainwater hopper draining into rainwater hopper
  - sp rainwater spout
- mechanical: heating**
- gas fire boiler and wall mounted flue
  - unvented cylinder

