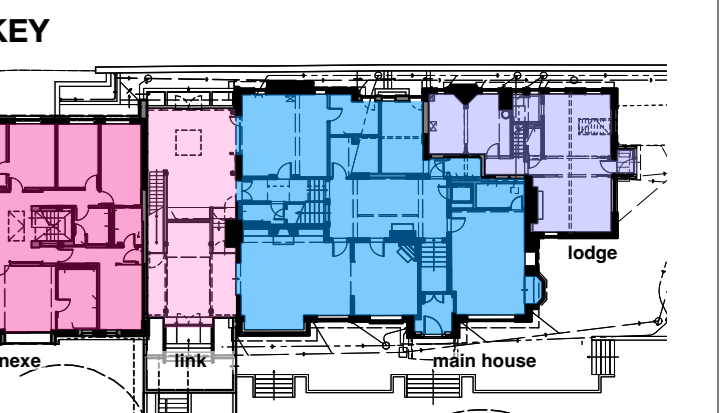


© BOWKER SADLER PARTNERSHIP LIMITED  
 THIS DRAWING IS THE SUBJECT OF COPYRIGHT WHICH VESTS IN BOWKER SADLER PARTNERSHIP LIMITED. IT IS AN INSTRUMENT OF COPYRIGHT TO REPRODUCE THIS DRAWING, BY WHATEVER MEANS, INCLUDING ELECTRONIC, WITHOUT THE EXPRESS WRITTEN CONSENT OF BOWKER SADLER PARTNERSHIP LIMITED WHICH RESERVES ALL ITS RIGHTS.  
 BOWKER SADLER PARTNERSHIP LIMITED ASSURES ITS RIGHTS TO BE IDENTIFIED AS THE AUTHOR OF THIS DESIGN.

■ REPORT ERRORS & OMISSIONS TO ARCHITECT.  
 ■ CHECK ALL DIMENSIONS ON SITE.  
 ■ DRAWING TO BE READ IN CONJUNCTION WITH THE HEALTH AND SAFETY PLAN AND ALL RELEVANT RISK ASSESSMENTS.

Survey drawings are kindly provided by Mutton Hughes Land Surveyors Ltd and are assumed to accurately describe the existing buildings, services and external spaces.

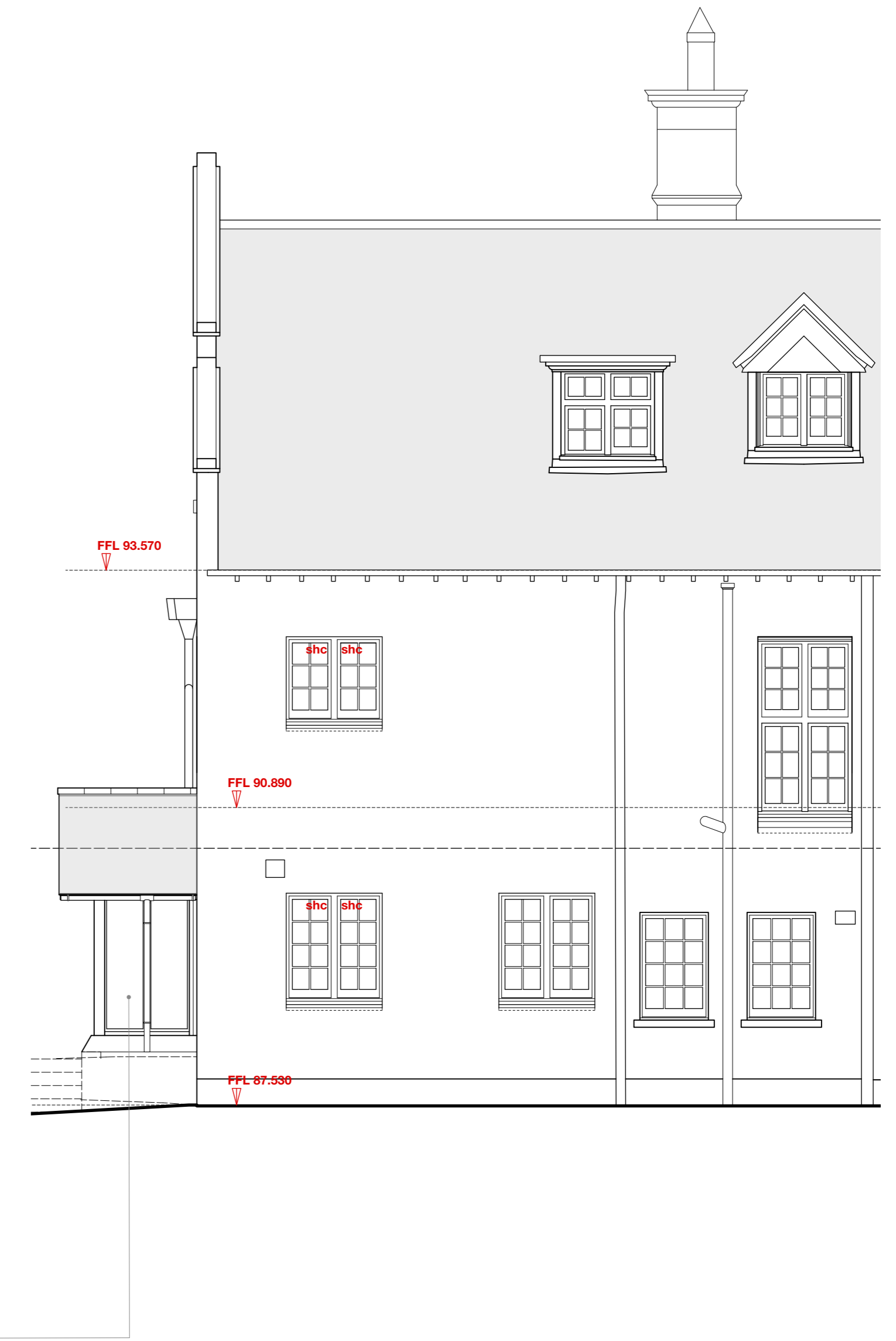
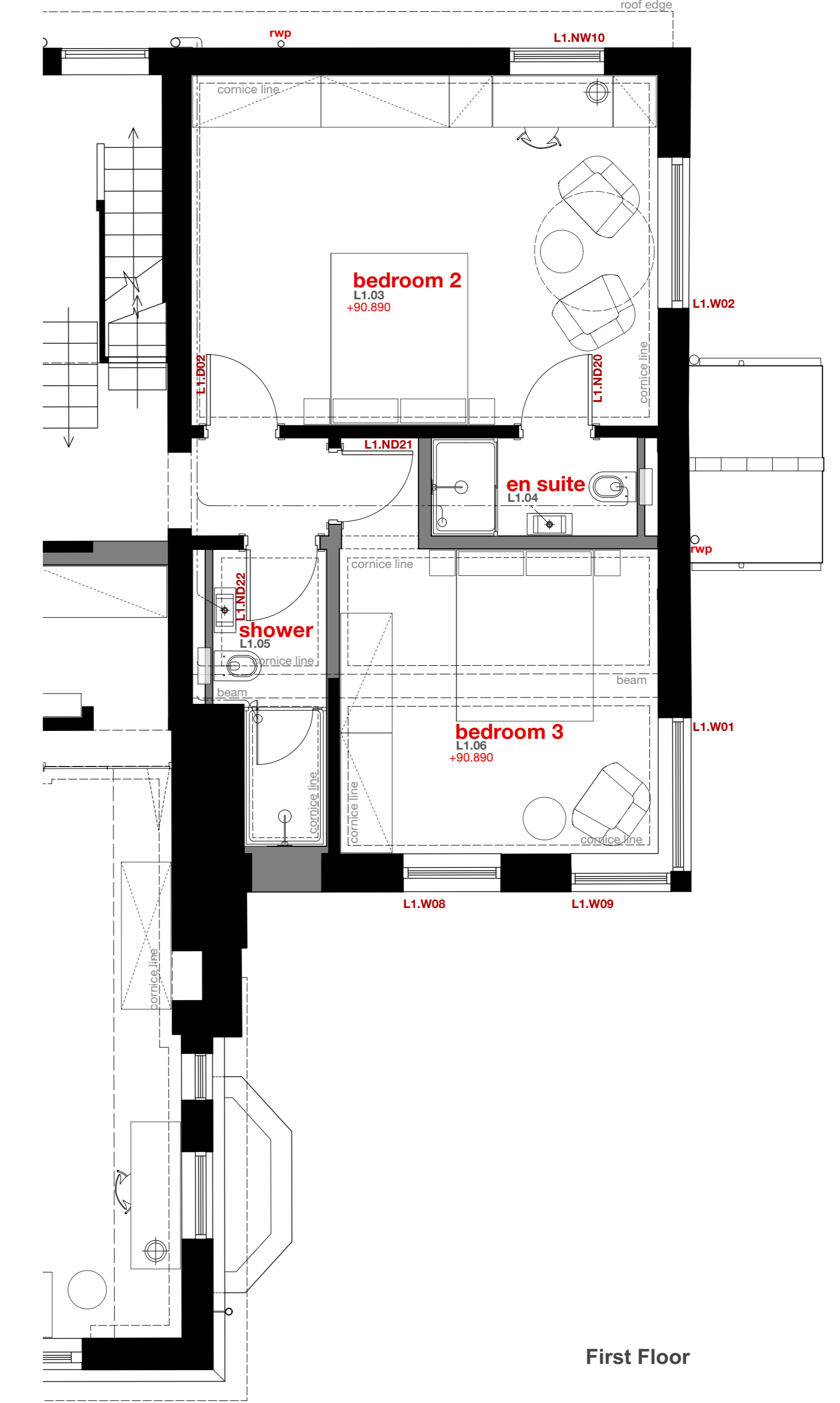
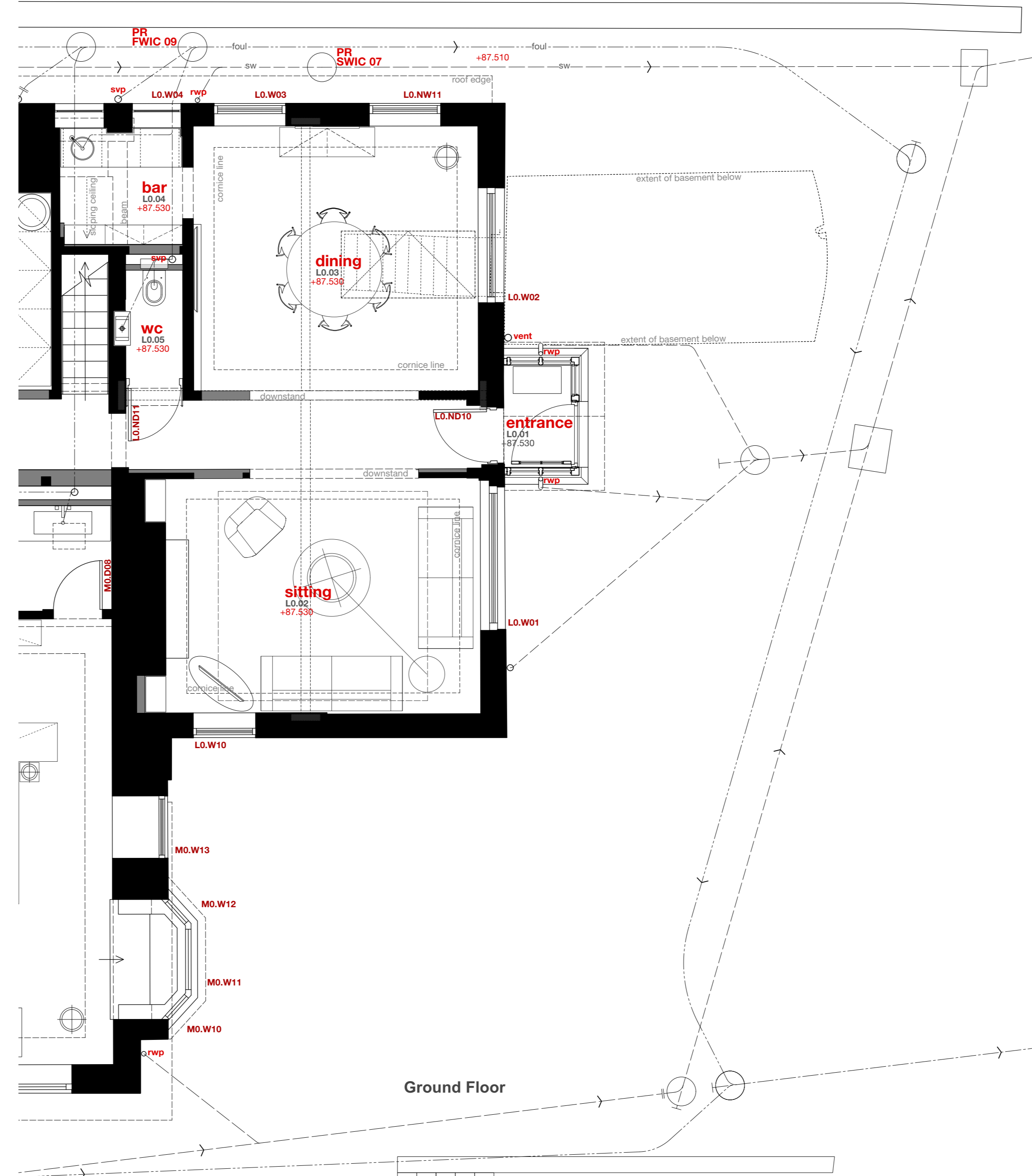
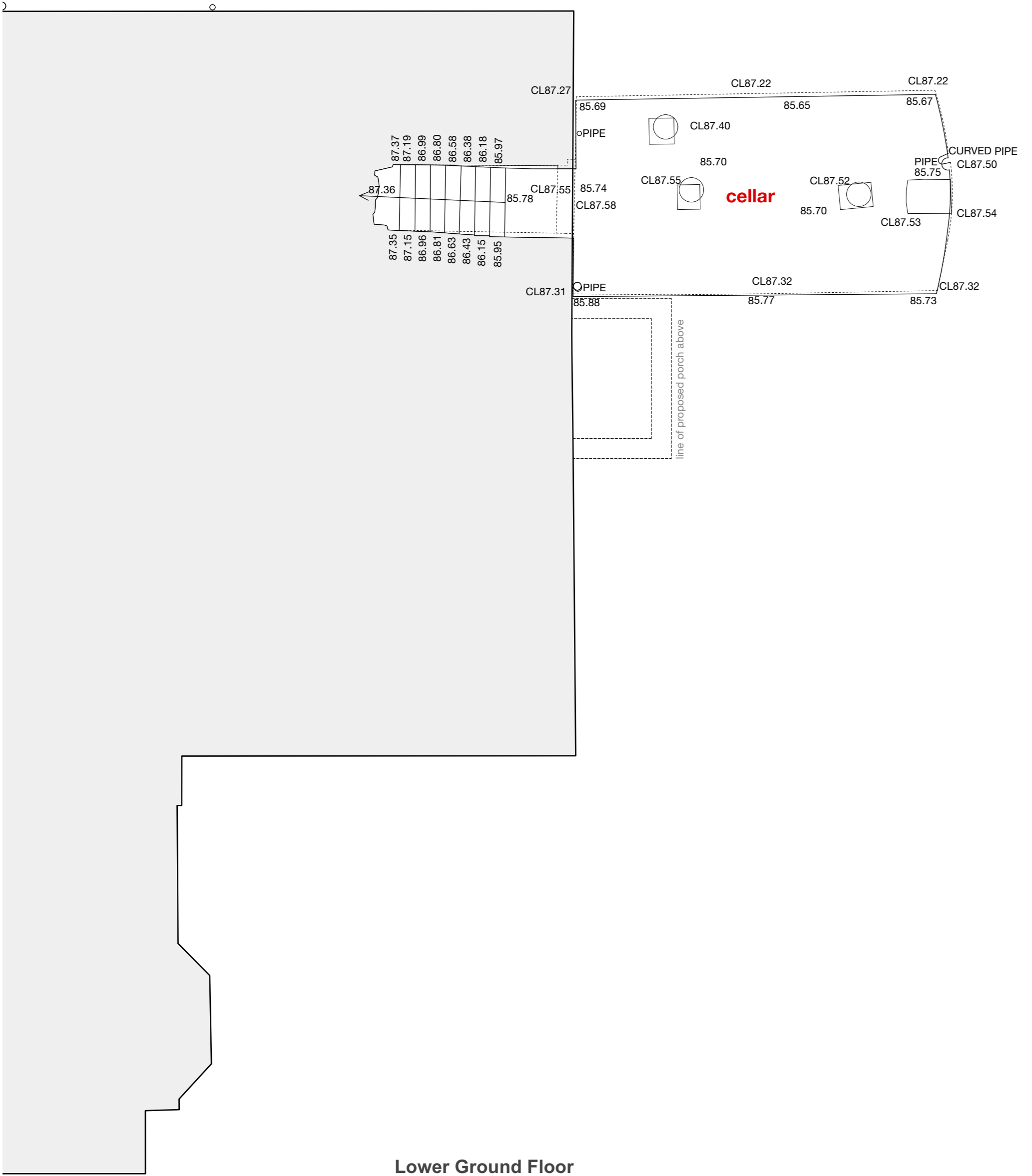


- Features**
- bhc bottom hung timber casement window
  - thc top hung timber casement window
  - shc side hung casement
  - vss vertical sliding sash timber window
  - fl fixed light timber window
  - rt roof light (flat roof)
  - vtf velux style roof light (pitched roof)
  - ort conservation style roof light (pitched roof)
  - h ceiling hatch
  - hf floor hatch
  - sd sliding door
  - sfd sliding folding door

- drainage services and landscape**
- mh Existing manhole
  - ic Existing inspection chamber
  - wic Existing water service inspection chamber

- FWIC 01**
- inspection chamber collecting foul water drainage
  - SYP Soil vent pipe and underground foul water drainage
  - W Waste pipe from washbasin/shower to foul water drainage
  - RWP Rainwater pipe, gully and underground surface water drainage
  - RWP+h Rainwater hopper draining into rainwater hopper
  - RP Rainwater spout

- mechanical: heating**
- gas fire boiler and wall mounted flue
  - unvented cylinder



REV	DATE	DRN	CHKD
PROJECT			
<b>The Hoo: Scheme 2</b>			
<b>17 Lyndhurst Gardens, Hampstead, London</b>			
Returning A Grand Victorian House to Private Domestic Accommodation NW3 SNU			
CLIENT			
<b>Mr and Mrs Yu</b>			
REPRESENTED BY			
<b>JAGA Developments (London)</b>			
DRAWING			
<b>Entrance to Lodge</b>			
<b>New Porch</b>			
<b>As Proposed</b>			
SCALE	SHEET SIZE	DRAWN	CHECKED
1:50	A0	GM:c	Mar 2022

**BOWKER SADLER ARCHITECTURE**  
 A: Hatherlow House, Hatherlow, Romley, Stockport SK6 3DY  
 T: 0161 406 7333  
 E: info@bowker-sadler.co.uk  
 W: www.bowker-sadler.co.uk

JOB No	DRAWING No	REVISION
<b>19013</b>	<b>1161</b>	
STATUS	FOR PLANNING	