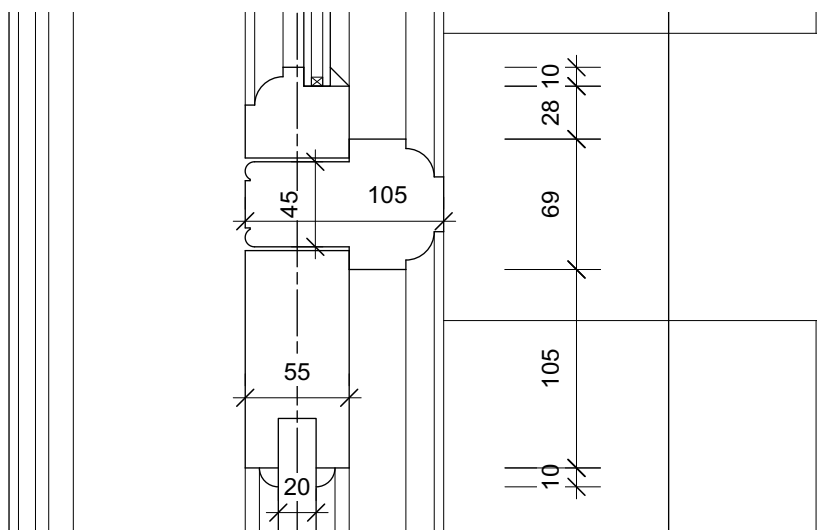
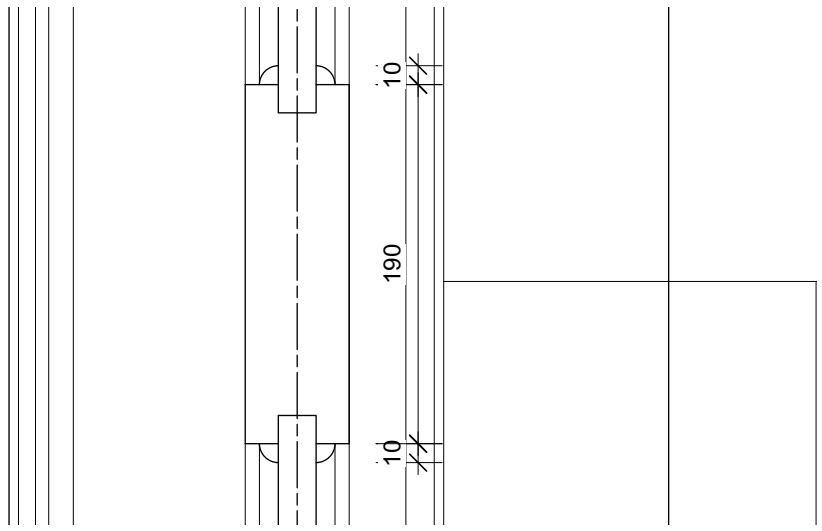


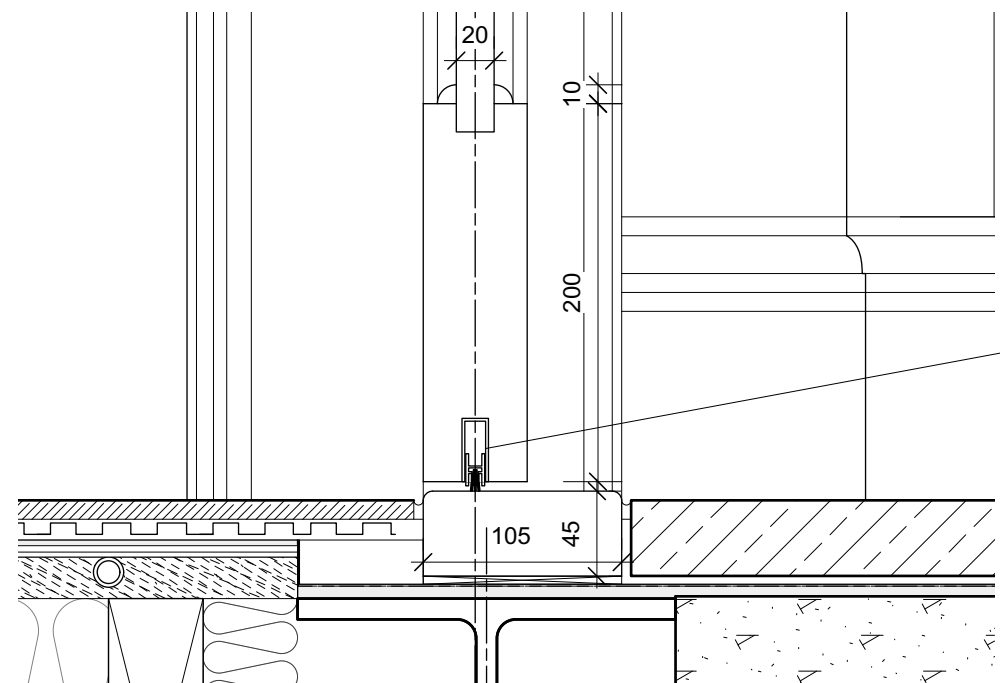
1 HEAD DETAIL AT DOOR  
Scale: 1:4



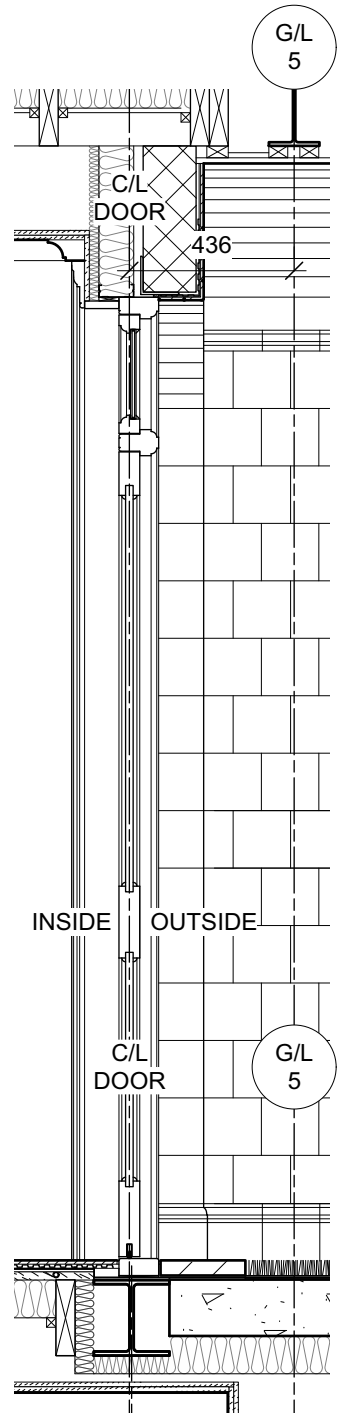
2 TRANSOM DETAIL AT DOOR  
Scale: 1:4



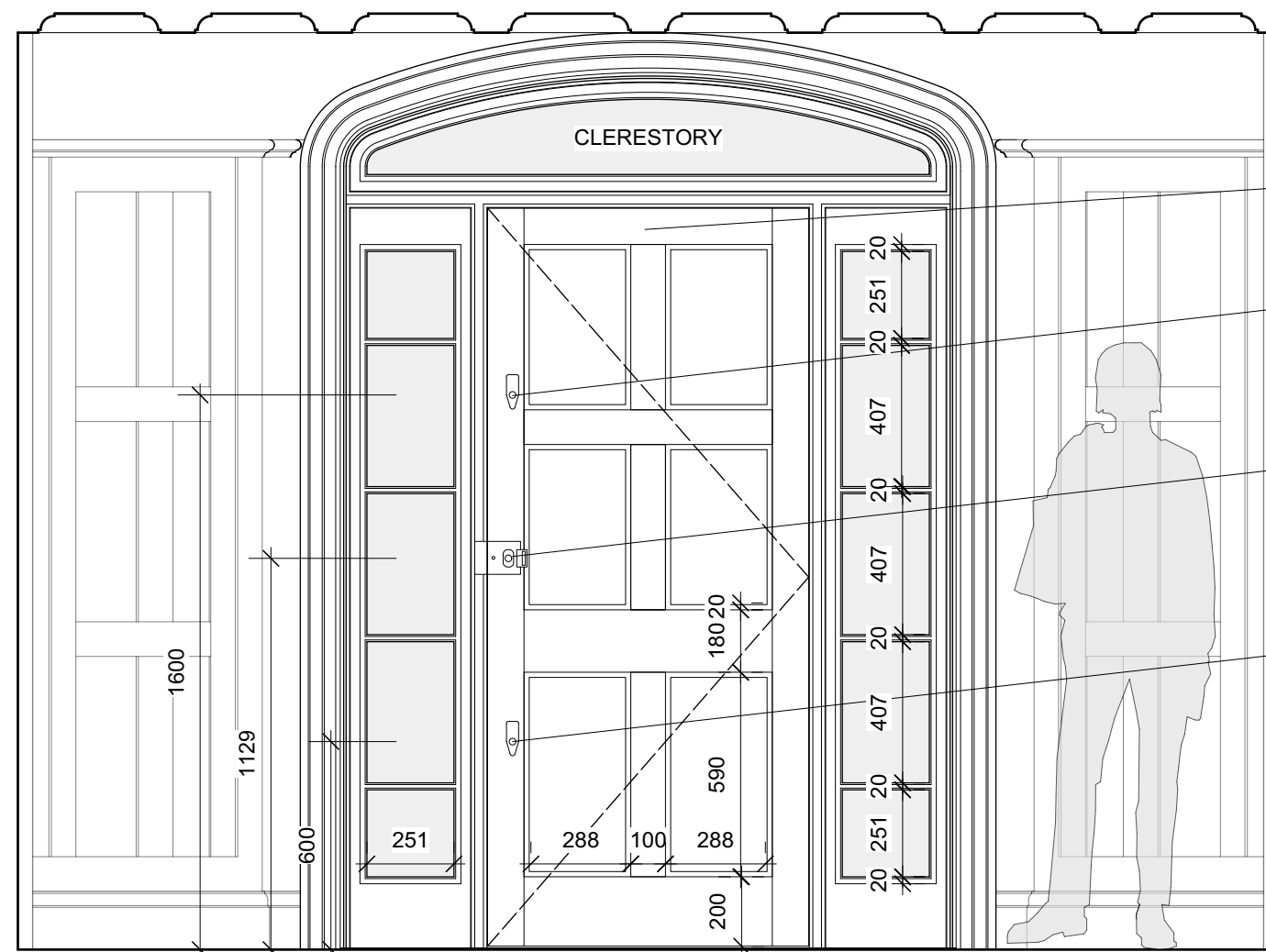
3 MID RAIL DETAIL  
Scale: 1:4



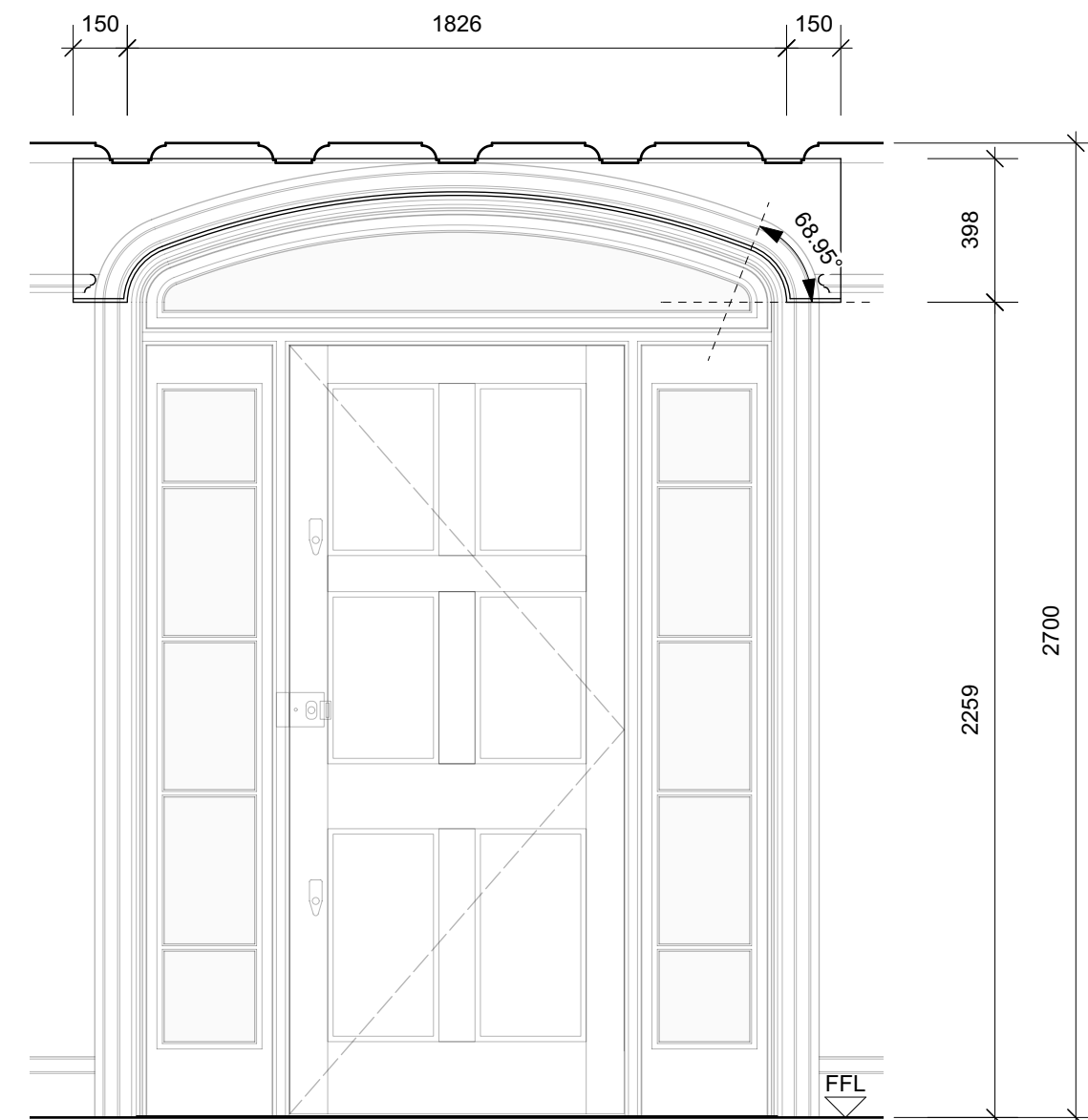
4 DOOR CILL DETAIL  
Scale: 1:4



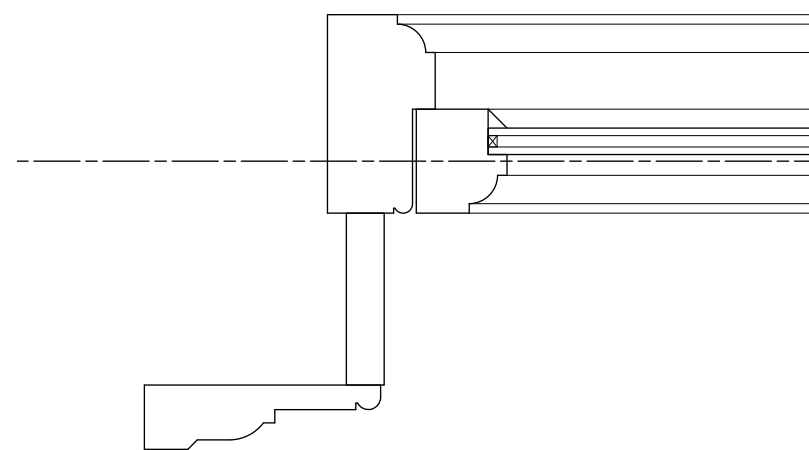
5 SECTION AT DOOR  
Scale: 1:20



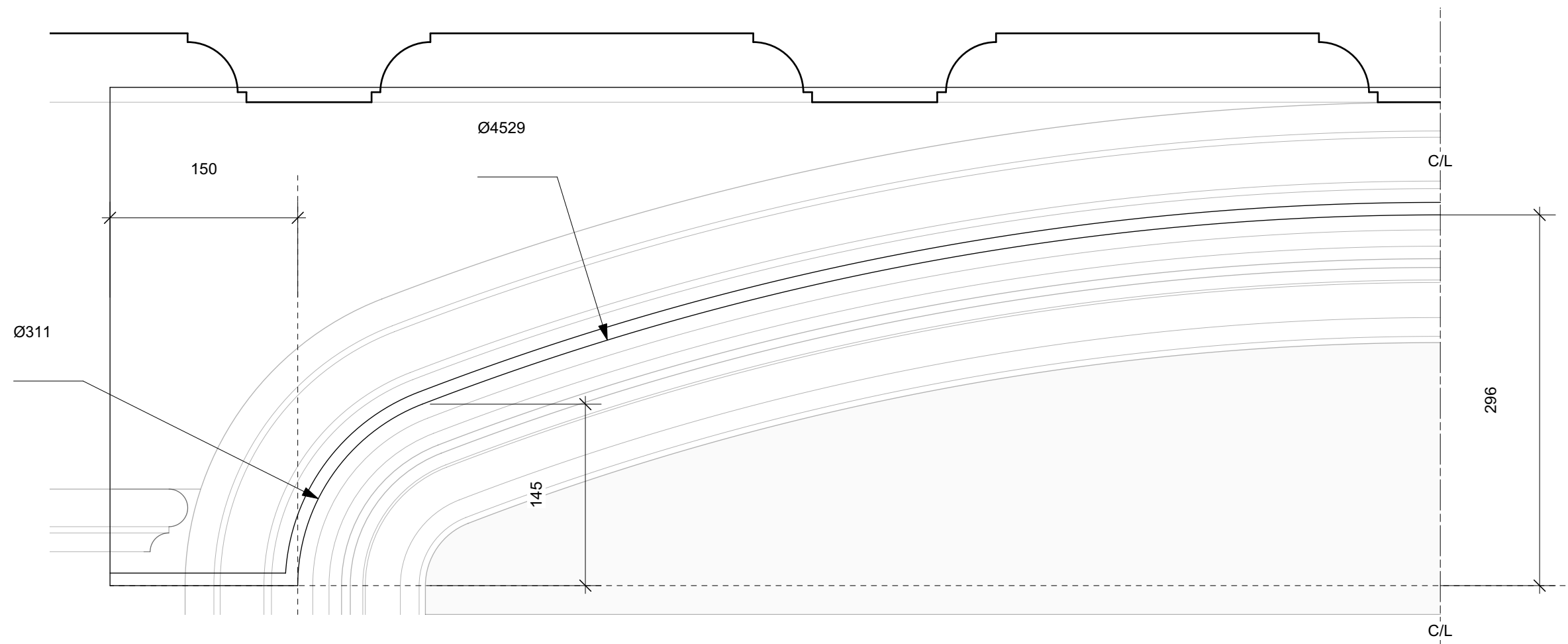
6 INTERNAL ELEVATION  
Scale: 1:20



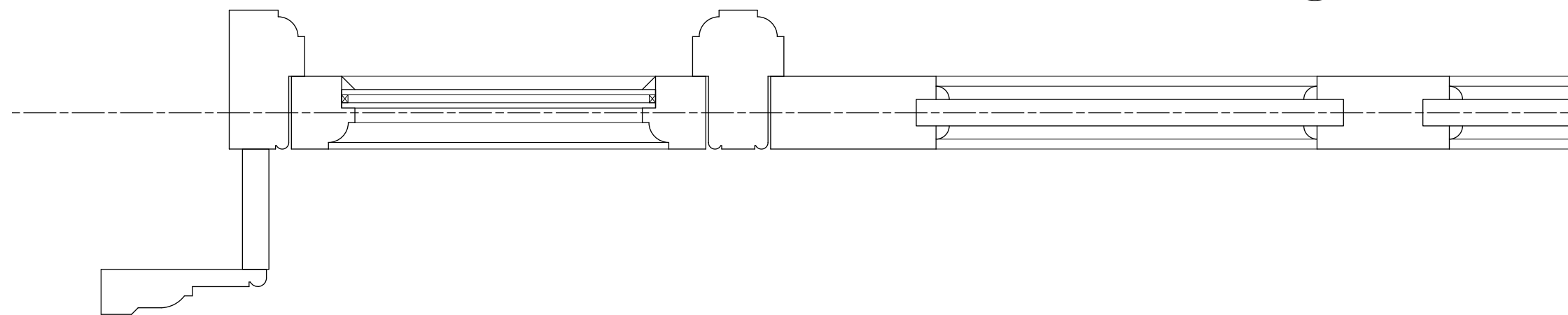
7 BESPOKE LINTEL  
Scale: 1:20



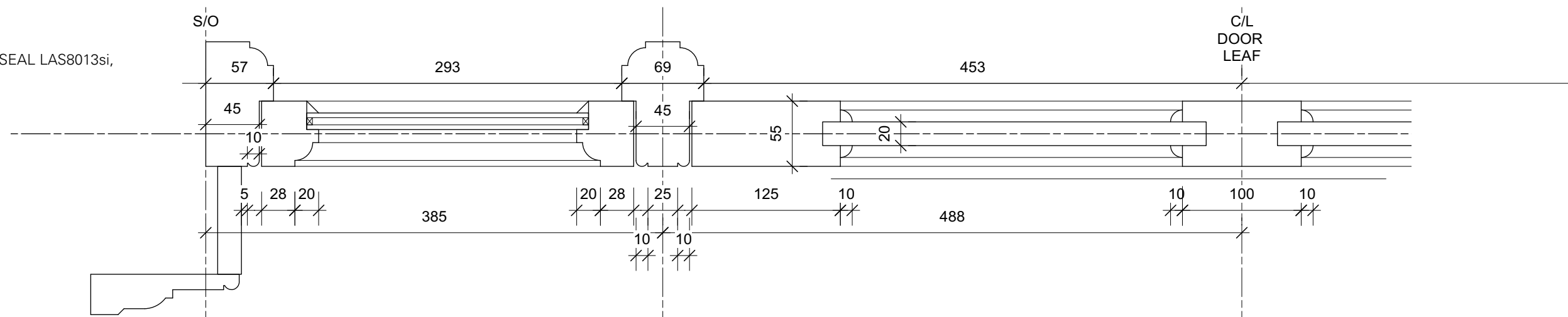
8 SECTION DETAIL AT CLERESTORY  
Scale: 1:4



11 BESPOKE LINTEL DETAIL  
Scale: 1:4



9 SECTION DETAIL ABOVE MID RAIL  
Scale: 1:4



10 SECTION DETAIL BELOW MID RAIL  
Scale: 1:4

#### NOTES.

ALL GLAZED PANELS TO BE GLAZED WITH SLIMLINE  
4/6/4: SOFTCOAT LOW 'E' TOUGHENED CLEAR -  
KRYPTON FILLED - BLACK SPACED - TOUGHENED  
CLEAR. GLAZED W PUTTY.

NO KITE MARKS ARE TO BE DISPLAYED BUT  
CERTIFICATION WILL BE REQUIRED.

ALL TIMBER TO BE ACCOYA + HARDWOOD CILL

DOOR TO BE FULLY WEATHER STRIPPED WITH  
SCHLEGEL AQUAMAC SOFT COMPRESSION SEALS IN  
WHITE FINISH.

UNLESS OTHERWISE NOTED, IRONMONGERY TBC.

DELIVER FULLY PRIMED FOR RECEIVING PAINT FINISH  
ON SITE. COLOUR TBC.

#### NOTES

LH	FOR PLANNING	11/10/22	0
CHECK	REVISION NOTES	DATE	REV

28 REDINGTON ROAD, LONDON, NW3 7RB

#### FRONT DOOR DETAILS

#### FOR PLANNING - CONDITION 5

350	1:4	905	PO
JOB NO.	SCALE (AS SHOWN)	DRAWING NO.	REV

**TC**  
**A**  
Thomas Croft Architects  
Studio 117  
Great Western Studios  
65 Alfred Road  
London, W2 5EU  
United Kingdom  
+44 (0)20 8962 0066  
email@thomascroft.com  
www.thomascroft.com