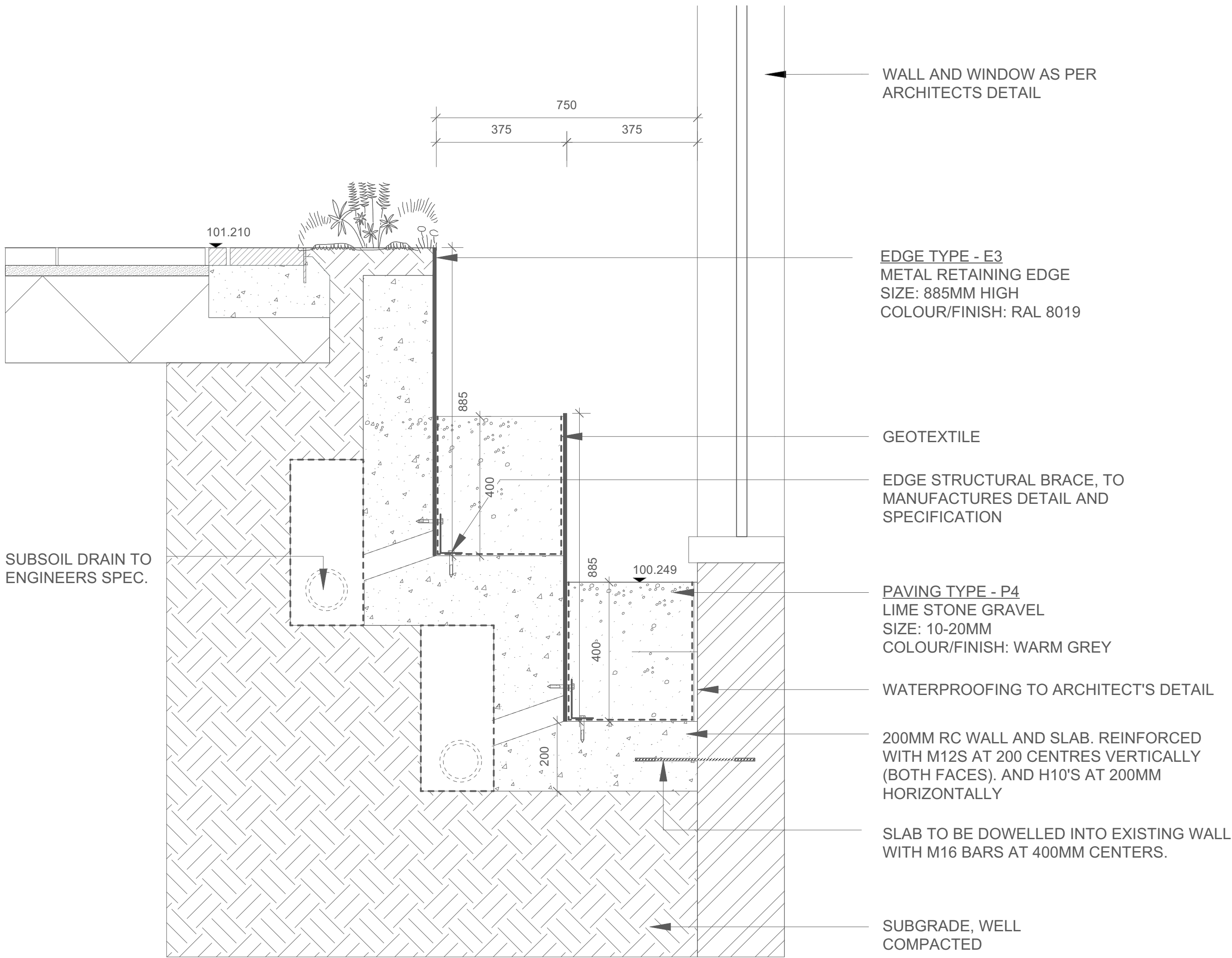
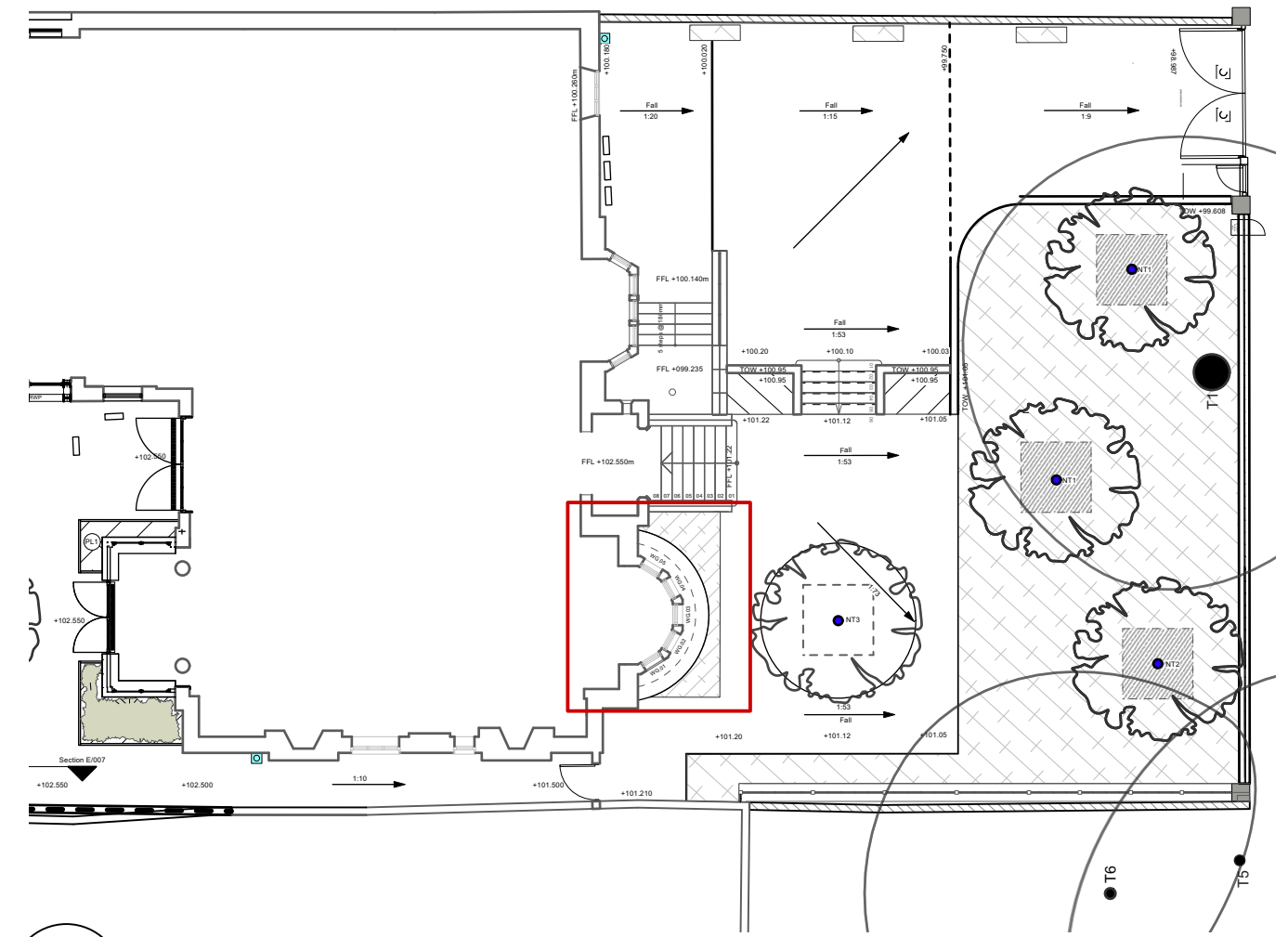


1 LIGHTWELL -Plan view
Scale: 1:25



2 LIGHTWELL - Detail Section
Scale: 1:10



3 KEY PLAN
Scale: 1:200

P1	11/11/2022	AA	Issued for Planning
Revision	Date	By	Notes
Drawing Notes	<ul style="list-style-type: none">- Do not scale dimensions from this drawing. Use figure dimensions only- All drawn dimensions and quantities to be checked on site and discrepancies/omissions to be reported to the designer- All existing dimensions, levels, drain runs and site conditions to be checked prior to construction or commencement of shop drawings.- Any amendments to be reviewed with designer prior to construction- Construction details supplied by Seacon.- This drawing is copyright. Do not reproduce without written permission from the author		
Purpose of Issue	This drawing has been prepared for planning purposes.		
Project	28 Redington Road		
Drawing Title	Lightwell Detail		
Drawing No.	DT-013		
Scale: Varies	@A1	Date 11/11/2022	Drawn By AA Checked By EE
EMILY ERLAM STUDIO	<div>Emily Erlam Studio Ground Floor 84 Marchmont Street London, WC1N 1AG emily@erlamstudio.com</div> <div>Registered Office New Derwent House 69-73 Theobalds Road London, WC1X 8TA Registered No 078 66446</div>		