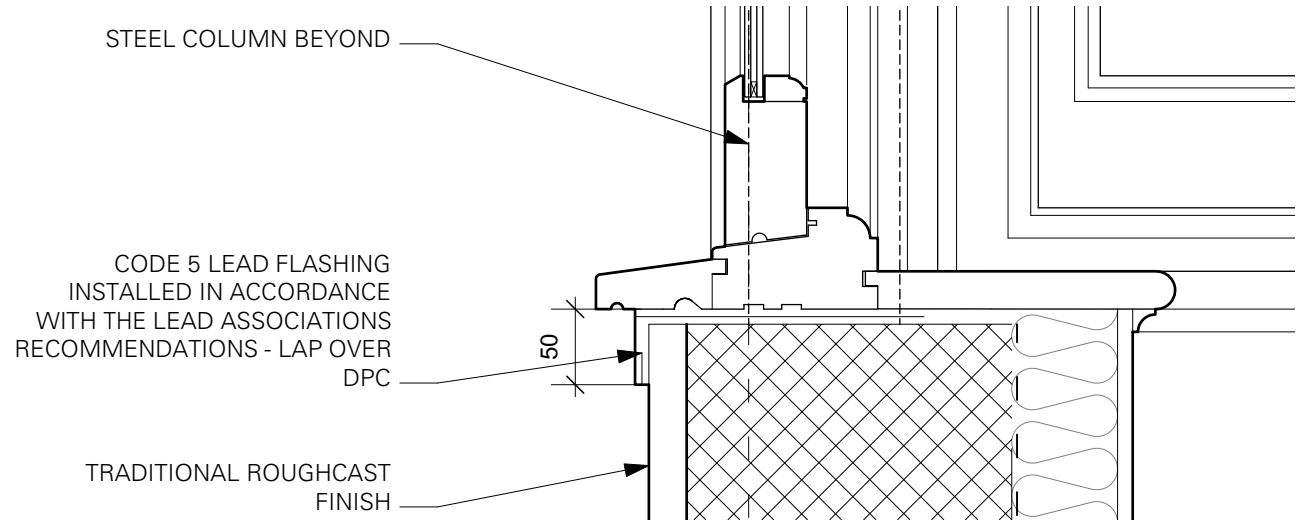
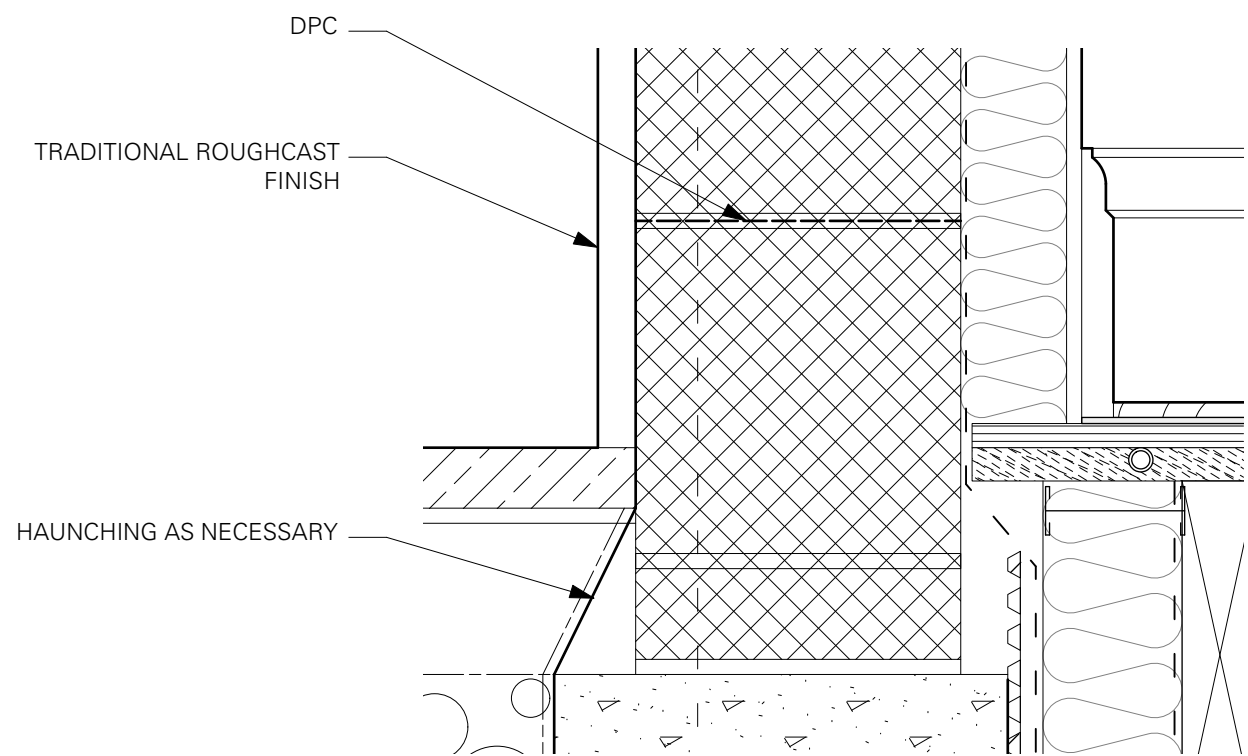


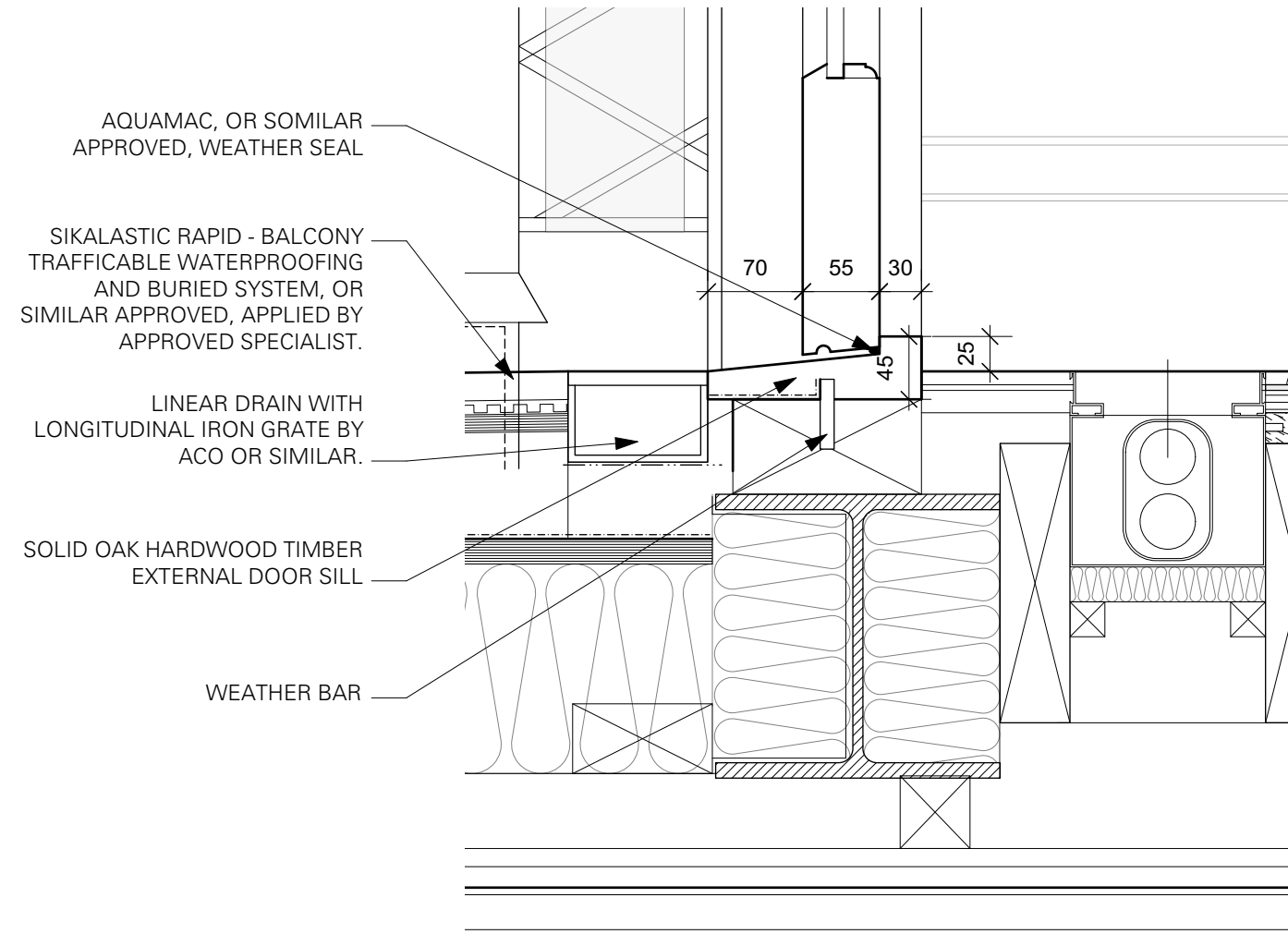
3 TYPICAL CONSERVATORY DETAIL  
Scale: 1:5



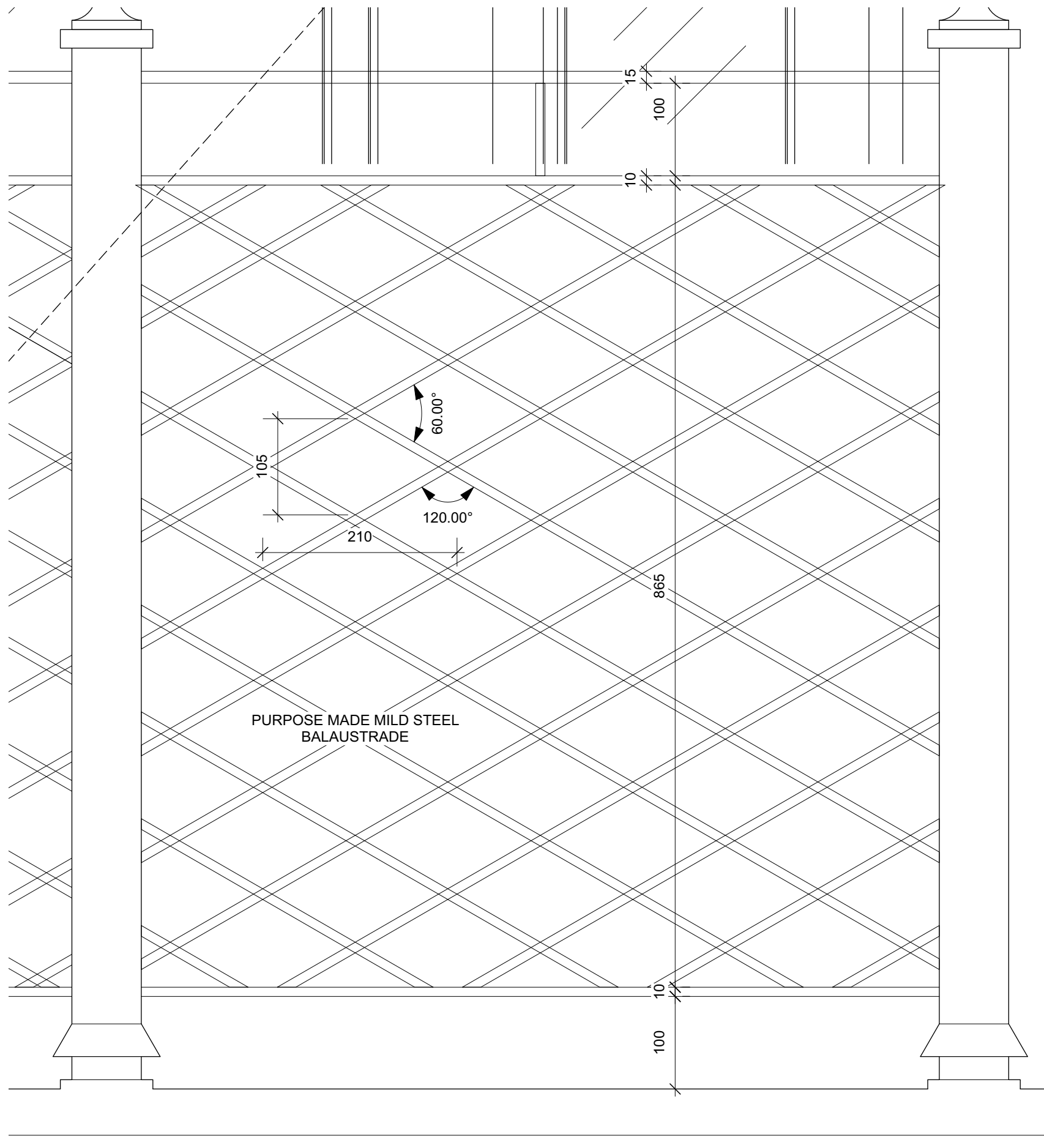
2 TYPICAL CONSERVATORY DETAIL  
Scale: 1:5



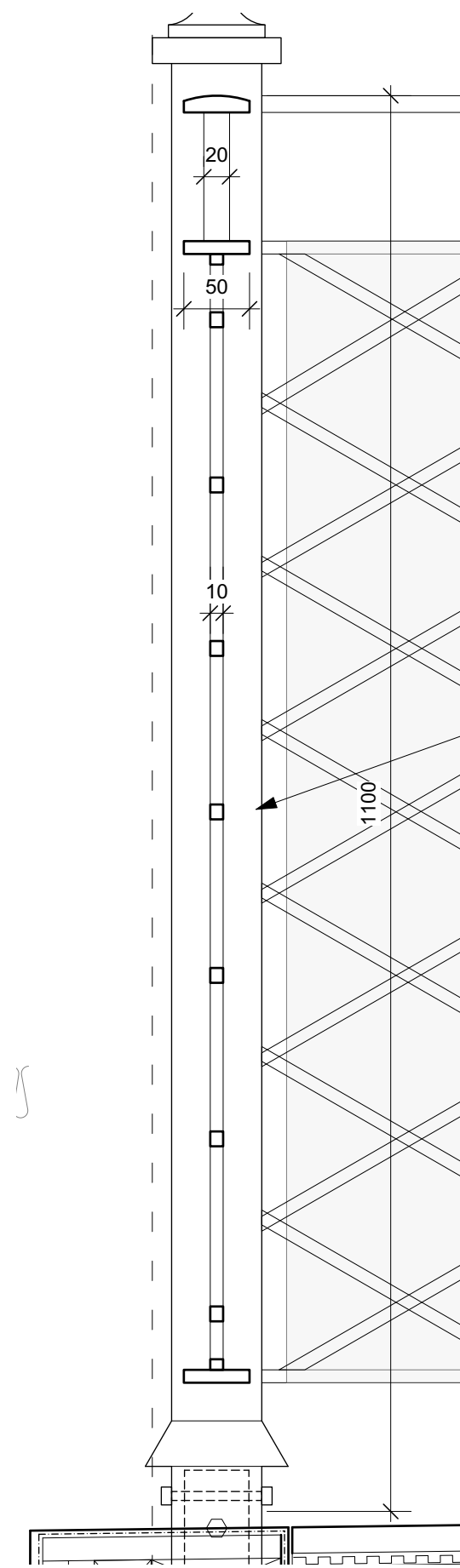
1 TYPICAL CONSERVATORY DETAIL  
Scale: 1:5



4 NEW BALCONY DOOR SILL DETAIL  
Scale: 1:5



5 TYPICAL BALAUSTRADE DETAIL  
Scale: 1:5



INDICATES 50 x 50mm S/S MESH SECRETLY FIXED TO ALL PANELS BETWEEN POSTS. ENSURE THE FITTINGS ARE ACCESSIBLE SO THE MESH COULD BE EASILY REMOVED FOR CLEANING PURPOSES

6 TYPICAL BALAUSTRade DETAIL  
Scale: 1:5

LH	FOR PLANNING	11/10/22	0
CHECK	REVISION NOTES	DATE	REV.

28 REDINGTON RD. LONDON NW3 7RB

## GARDEN RM BAY WINDOW DETAILS

## FOR PLANNING - CONDITION 5

### DRAWING STATUS

350 JOB NO.	1:20 SCALE (AS SHOWN)	502.2 DRAWING NO.	P0 REV
----------------	--------------------------	----------------------	-----------

**TC**  

---

**A**

Thomas Croft Architects  
Studio 117  
Great Western Studios  
65 Alfred Road  
London, W2 5EU  
United Kingdom

+44 (0)20 8962 0066  
email@thomascroft.com  
[www.thomascroft.com](http://www.thomascroft.com)