

NOTES

LH	FOR PLANNING	11/10/22	0
CHECK	REVISION NOTES	DATE	REV

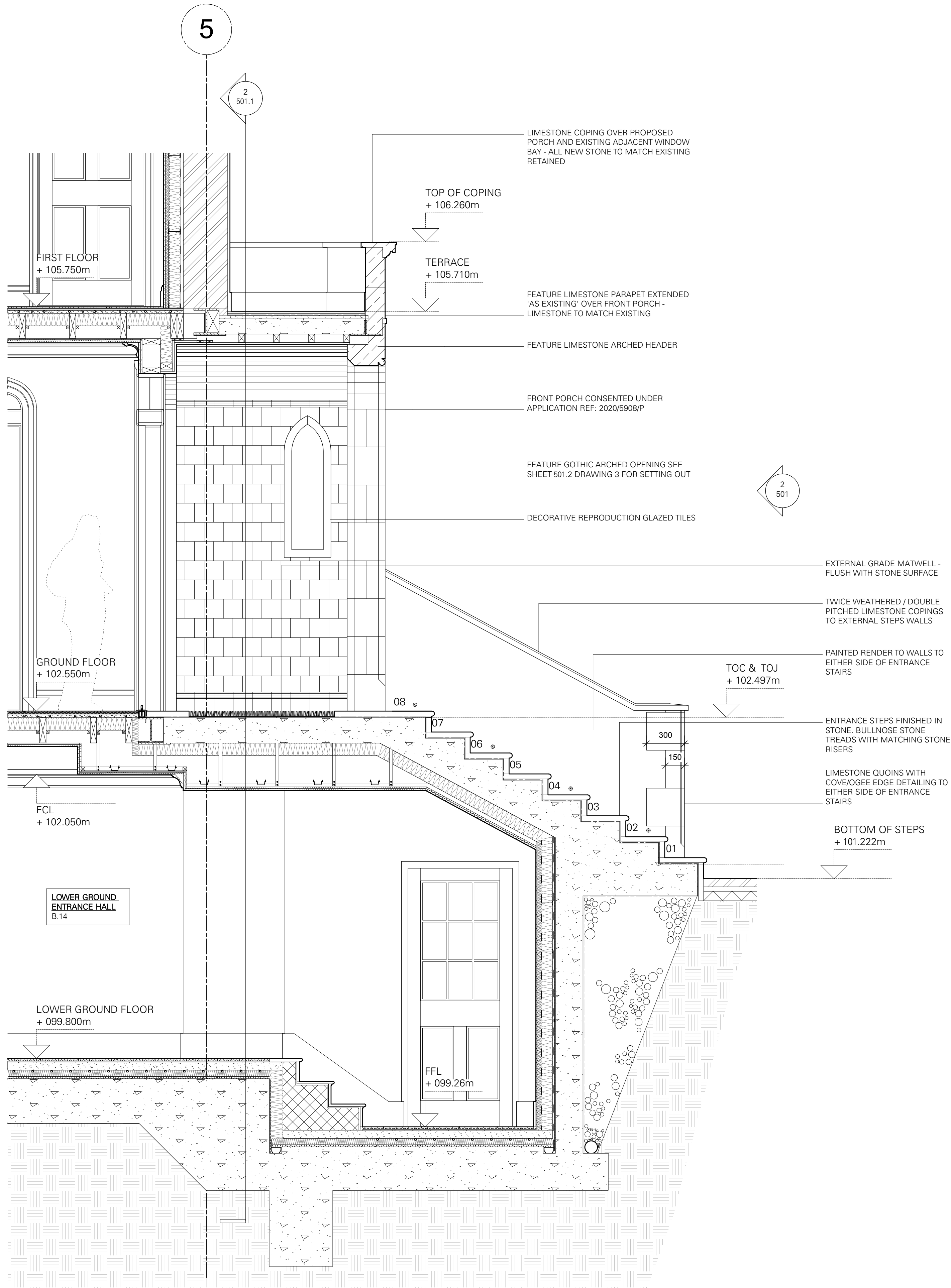
28 REDINGTON RD. LONDON NW3 7RB

ENTRANCE STEPS  
SHEET 2

FOR PLANNING - CONDITION 5  
DRAWING STATUS

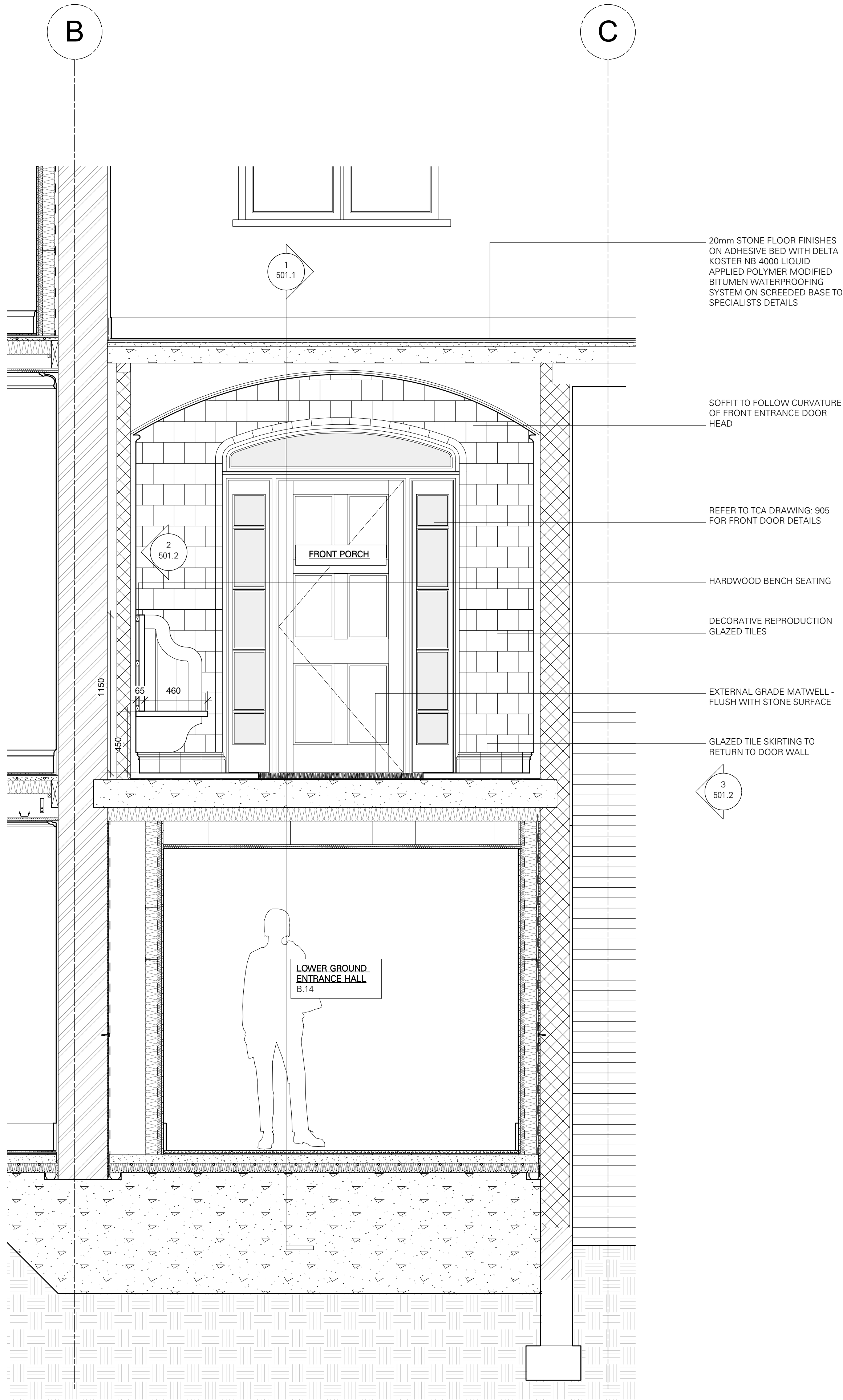
350	1:20	501.1	PO
JOB NO.	SCALE (AS SHOWN)	DRAWING NO.	REV

**TC**  
**A**  
Thomas Croft Architects  
Studio 117  
Great Western Studios  
65 Alfred Road  
London, W2 5EU  
United Kingdom  
+44 (0)20 8962 0066  
email@thomascroft.com  
www.thomascroft.com



1 ENTRANCE STEPS - LONG SECTION  
Scale: 1:20

SCALE 1:20 @ A1  
0 1 2 3m



2 ENTRANCE STEPS - LONG SECTION  
Scale: 1:20

20mm STONE FLOOR FINISHES  
ON ADHESIVE BED WITH DELTA  
KOSTER NB 4000 LIQUID  
APPLIED POLYMER MODIFIED  
BITUMEN WATERPROOFING  
SYSTEM ON SCREEDED BASE TO  
SPECIALISTS DETAILS

SOFFIT TO FOLLOW CURVATURE  
OF FRONT ENTRANCE DOOR  
HEAD

REFER TO TCA DRAWING: 905  
FOR FRONT DOOR DETAILS

HARDWOOD BENCH SEATING

DECORATIVE REPRODUCTION  
GLAZED TILES

EXTERNAL GRADE MATWELL -  
FLUSH WITH STONE SURFACE

GLAZED TILE SKIRTING TO  
RETURN TO DOOR WALL