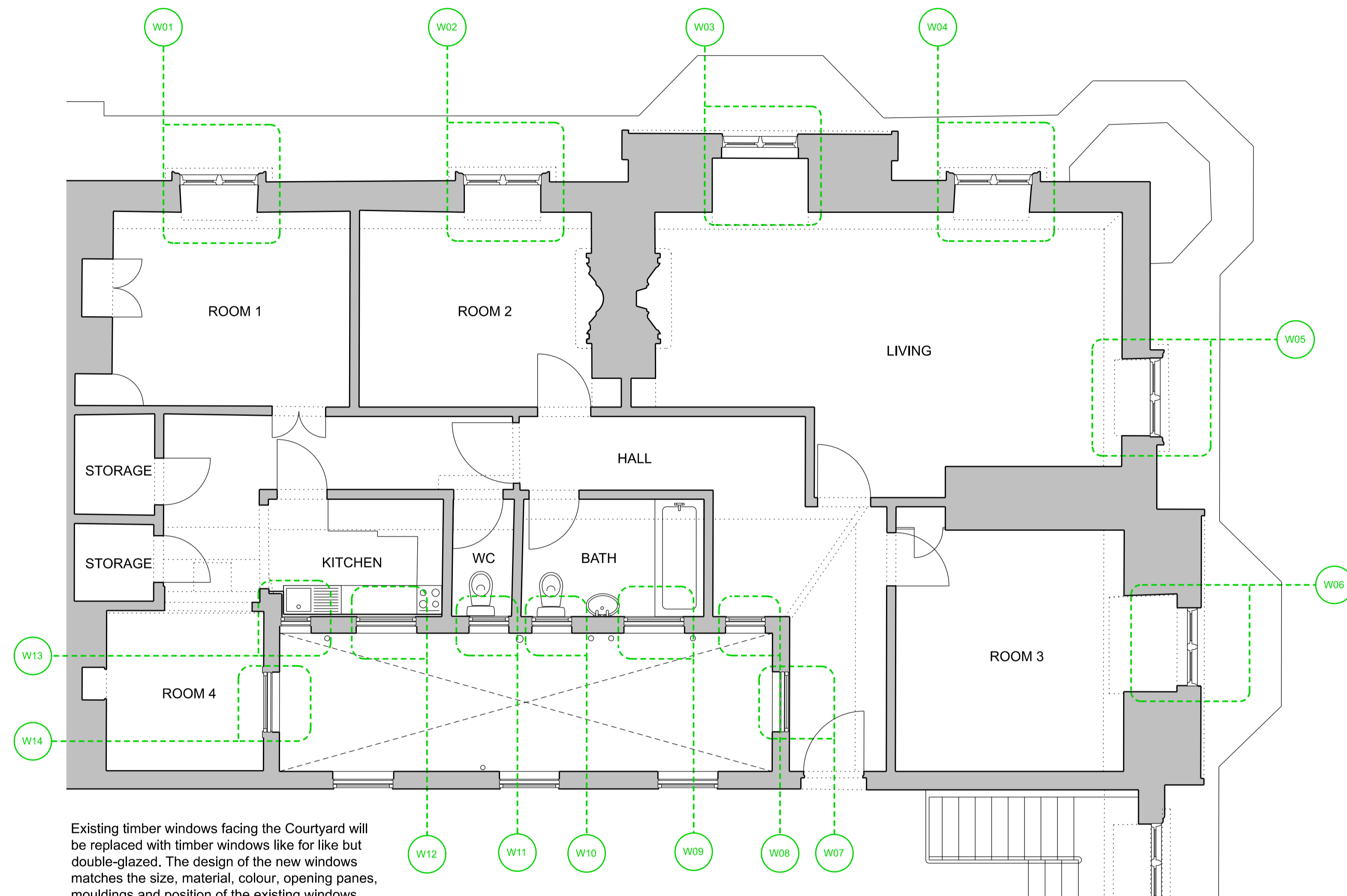


Existing timber windows at the North-West Facade will be replaced with timber windows like for like but double-glazed. The design of the new windows matches in all details the existing windows. Same size, material, position, colour, opening panes, mouldings etc. The windows will be an exact replica of the existing windows externally so there will be no difference to the external elevation of the property.



The existing uPVC windows at the North-East Facade will be replaced with white double-glazed timber windows in the style of the existing windows of the building. There will be a difference to the external elevation of the property.

Existing timber windows facing the Courtyard will be replaced with timber windows like for like but double-glazed. The design of the new windows matches the size, material, colour, opening panes, mouldings and position of the existing windows.

The lower Sash at the Windows W09, W10 and W11 will change from textured to clear glass.

There will be no significant difference to the external elevation of the Courtyard Facade.

01 Proposed Fourth Floor Plan
Scale 1:50 @A1 / 1:100 @A3



Notes

DO NOT SCALE (except for planning use).
Use figured dimensions only for construction. ALL contractors are requested to check all dimensions on site before proceeding.
All discrepancies to be notified in writing to PATALAB.
Dimensions are in millimeters unless stated otherwise.
All levels are in meters above AOD unless stated otherwise.
No areas indicated, or areas calculated from this drawing should be used for valuation purposes or as the basis for development contracts.
Copyright by PATALAB. All rights reserved including the right of reproduction in whole or part, in any form or media.

Client

Zedra Trust Company (UK)
Limited as trustees of
The Victor, Edie and Elaine Trust

Project

The Pryors Flat 31
London
NW3 1BS

Key Plan



Rev	Date	Reason for Issue
00	16.11.2022	Issued for Planning

