

From: Rob Lewis [REDACTED]
Sent: 08 November 2022 21:21
To: Patrick Marfleet [REDACTED]; Planning [REDACTED]
[REDACTED]
Cc: Chairman Queen Square Gardens
[REDACTED]
Subject: Queen Square Gardens / GOSH

Dear Patrick / Camden Planning cc'd,

Request for Investigation & pausing of GOSH application

Further to a request by the Chairman of the Queen Square Gardens Trustees, please find forwarded an executed copy of the letter from the Chairman of the Trustees, as well as the attachment that it refers to. I trust you will consider this and publish it on the portal for public review.

Given it is executed please use this version for the portal.

We hope an investigation into noise pollution commences very soon, as residents are suffering.

Best,

Rob

Trustees of Queen Square Gardens

2 November 2022

Mr Patrick Marfleet
Planning Department
London Borough of Camden
2nd Floor
5 Pancras Square
c/o Town Hall
Judd Street
London
WC1H 9JE

Dear Mr Marfleet,

**Re: Cumulative noise pollution in Queen Square Gardens
in conjunction with proposed Hospital development at Great Ormond Street**

In the past few years, Queen Square Gardens has gone from a place of peace and tranquillity to an area of quite severe noise pollution, due to numerous installations of air conditioning and other noise emitting plant in multiple areas around and near the Square.

Some of these installations have been fully permitted by Camden Planning without consultation of the Trustees of the Garden as a Freeholder and Neighbour.

Other noise emitting installations have unknown planning status.

Installations, such as the two "temporary" MRI Scanners parked on ambulance bays in Queen Square regularly disturb residents, waking many up at night. The Trustees have never been consulted on these scanners either, despite their significant noise pollution.

The Trustees and many residents have made complaints to Camden Noise Control on all these issues but nothing has been resolved. The standard response has always been offering of advice and 'talking' to emitters. Their advice is also, that they are unable to consider noise pollution outside in the Garden - only inside premises. Their remit, apparently, does not include outside spaces and advice was to speak to the Planning Department.

I am therefore attaching an overview of the current issues and requesting these are urgently considered, particularly in light of and in conjunction with Great Ormond Street Hospital's new planning application (which involves even more additional noise emitting plant being installed in the immediate vicinity).

The cumulative noise pollution in Queen Square is significantly reducing the amenity value of this important and historic inner city green area for all, as well as residents in this long standing residential area experiencing incessant disturbances day and night.

We request Camden commence an investigation into the issues we have highlighted as soon as possible with a view to reducing the cumulative effect of noise pollution in this important and historically important square to a noise level not above permitted levels from 11pm to 7am and remove any noise sources that present a statutory nuisance.

GOSH development

We further note that the proposed GOSH development involves two entire floors of noise emitting plant (one at a high level) and that there is no specification for this plant currently detailed.

We would request and hope that the problems in Queen Square can be resolved before any additional planning applications are considered that involve significant additional noise emitting plant.

Should planning permission ever be granted, you must ensure that a detailed schedule of plant is included and that as a condition of planning a maximum amount of noise pollution can be emitted from areas around the building that is <10db above background noise, and that no additional discernible noise can be heard in the Gardens of Queen Square.

We look forward to hearing from you on these issues.



Matthias Suchert
Chair
Trustees of Queen Square Gardens

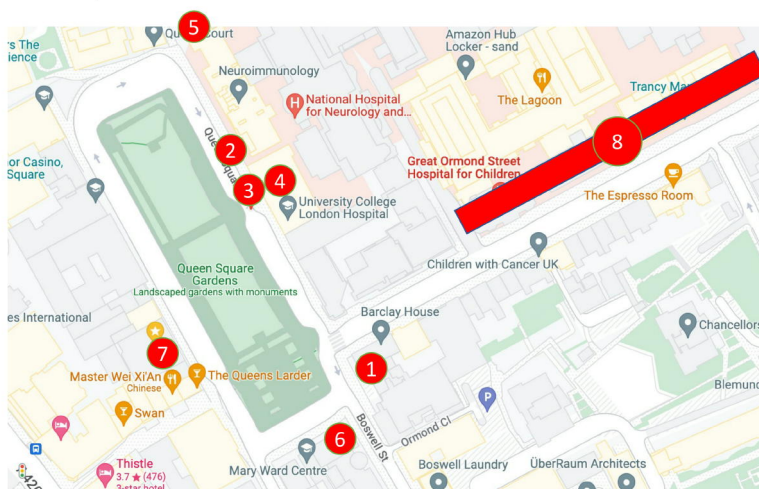
Queen Square Gardens

Plant and Air Conditioning Noise Pollution

Introduction

- Ever increasing air conditioning and plant noise from the surrounding buildings has destroyed the peace and tranquility for which Queen Square was once renowned.
- New air conditioning units such as those in Barclays House, at the National Hospital and in the Institute of Neurology as well as two "temporary" MRI scanner trailers cause distress to residents both in their homes and in the square itself, a vital local amenity.
- Many residents report being woken up in the middle of the night.
- Residents are alarmed to hear that Great Ormond Street Hospital plan a whole floor of air conditioning units in their new building at a level overlooking the square.
- Noise pollution complaints to Camden Council have resulted in some immediate action but further action is needed to ensure residents can sleep and all who use the square can enjoy it peacefully.
- Some of the installations highlighted have no planning despite the area being a Conservation Area.

Map of Concern



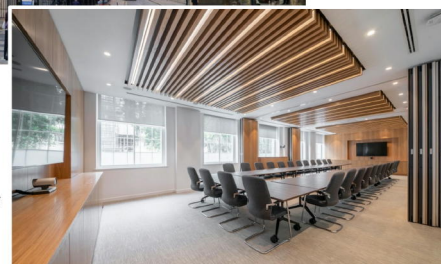
- 1 Barclay House new air con
- 2 Scanner trailer 1 - MRI
- 3 Scanner trailer 2 - MRI
- 4 National Hospital new air con
- 5 Institute of Neurology air con
- 6 GOSH Sight & Sound plant
- 7 West side of Queen Square
- 8 GOSH new development

1 Barclay House New Air Con Units

- When GOSH redeveloped Barclay House office building in a multi-million pound redevelopment, they added air conditioning for the comfort of their management and staff.
- It has been identified as a major source of noise on the square by Camden Council inspectors.
- However, no action has apparently been taken yet and the noise levels are still significant, Mon-Fri in working hours.



*New air con
units at
roof and
lower ground levels*



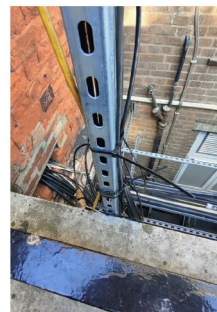
*New air conditioned offices
are good for office
workers, not for residents*

2 Scanner trailer 1 – MRI Scanner

- UCLH have installed a “temporary” MRI Unit on the road on Queen Square within a few metres of a block of 45 flats
- The unit is not designed to be used in a residential setting, given that it emits a huge amount of highly intrusive noise when in use – both equipment noise and air conditioning noise.
- Up to 89db can be generated when in use – even in the middle of the night.
- It has been identified as a major source of noise on the square by Camden Council and it wakes up residents at night.
- However, no action has yet been taken.
- We can see no evidence this installation or the structures attached to it and the hospital have planning permission.
- A permanent structure was added for services to these units recently, above pavement level, apparently with no planning or consent from the council.



Up to 89db of
noise pollution



3 Scanner trailer 2 – MRI Scanner 2

- UCLH have installed a secondary “temporary” MRI Unit on the road on Queen Square beside the existing scanner.
- It too is not designed for residential use, and wakes up residents in the middle of the night.
- No evidence of planning permission for this or the structures erected around it.

Up to 89db of
noise pollution



4 National Hospital - Multiple New Air Con Units

- UCLH have significantly increased the size of the air conditioning units on top of their buildings on Queen Square.
- Attached are photos of new air con units installed August 2022 which were 3-4 x bigger than the original unit.
- Other units were swapped out for bigger units in August 2022.



*Recent upgrades / additional equipment
being delivered and installed*

5 Institute of Neurology – New AC Units *New large air con units*

- The Institute of Neurology also increased the size of the air conditioning units on top of their buildings on Queen Square in August 2022.
- Attached are photos of a new air con units being delivered August 2022.
- Residents are concerned about significant air conditioning noise – particularly residents in Queen Court, a block of 45 flats running parallel to the Institute who suffer from air conditioning noise and a related intermittent hum from the ground floor.



6 GOSH Sight & Sound building

- The redevelopment (now complete) of the GOSH Sight & Sound building has included the installation of a huge amount of new air conditioning plant at roof level. Previously there was none.
- The noise can be heard from the October Gallery garden next door where it is loud and ever present.
- This new building is yet another intrusion on the quiet and tranquility previously experienced in Queen Square by residents, hospital patients, local staff and all who seek a peaceful respite there.

New air con
units at a
high level



7 West of Queen Square

- To compound the air conditioning noise and plant noise in Queen Square, additional commercial extraction and plant equipment has recently been installed to the West of Queen Square.
- These units are in some cases only a metre or two away from residential bedrooms and keep residents awake at night.
- They add further to the noise pollution in the square.



8 GOSH New Building

- GOSH plan a new high rise building on Great Ormond Street, a major development that will create further major issues for Queen Square local residents including a substantial increase in noise pollution, both short and long-term.
- An entire floor of air conditioning and other plant is planned spread out over the whole of floor 7 – which will overlook Queen Square, given its height.



Conclusions

- The tranquility of Queen Square is under threat by noise pollution from all sides, almost entirely generated by buildings which are part of UCLH or UCL.
- Local residents are being woken up every night and anyone who visits the square now is assailed by sound where once there was quiet and tranquility.
- Given that this is a residential area, and that many of these units are waking up residents at night, there is an urgent need to discuss plant noise pollution with the primary parties responsible, namely GOSH, the National Hospital, the Institute of Neurology individually as well as with UCLH and UCL.

