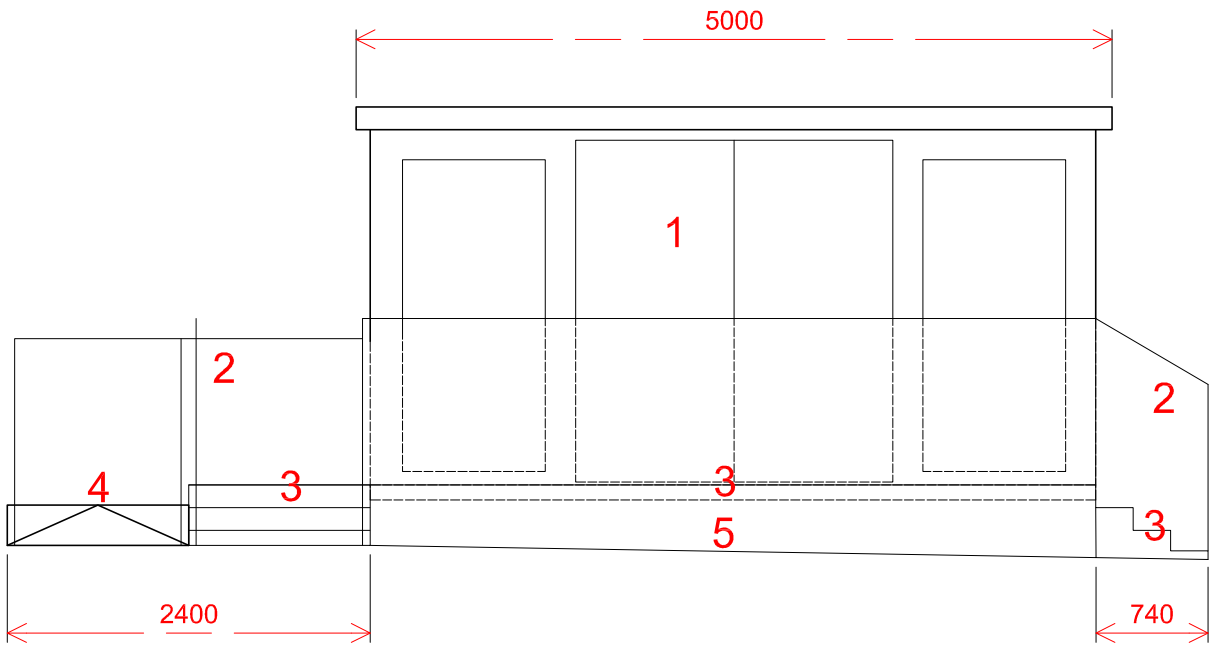
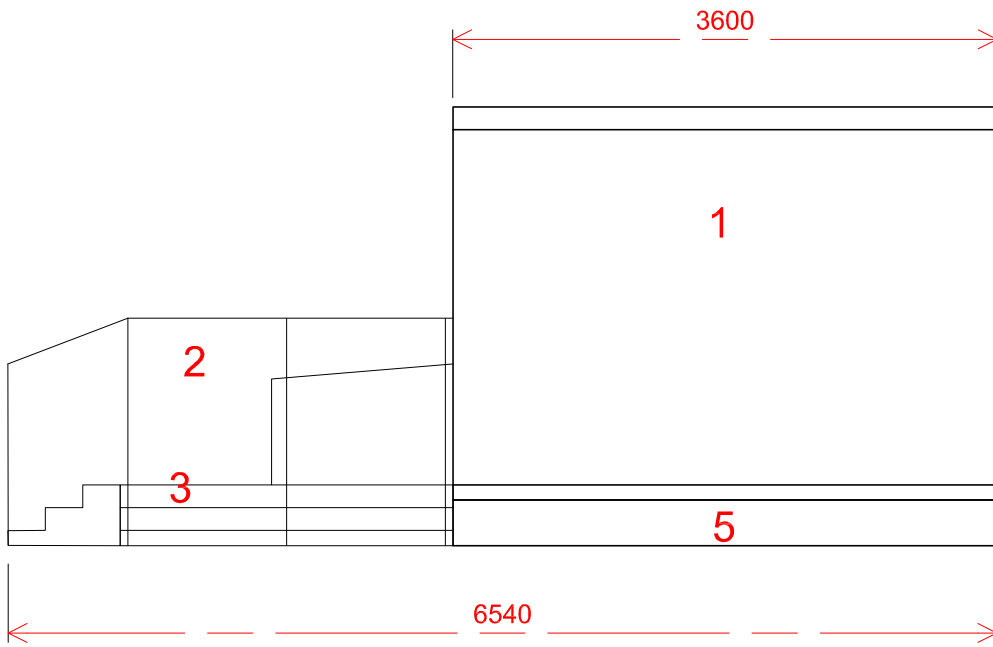


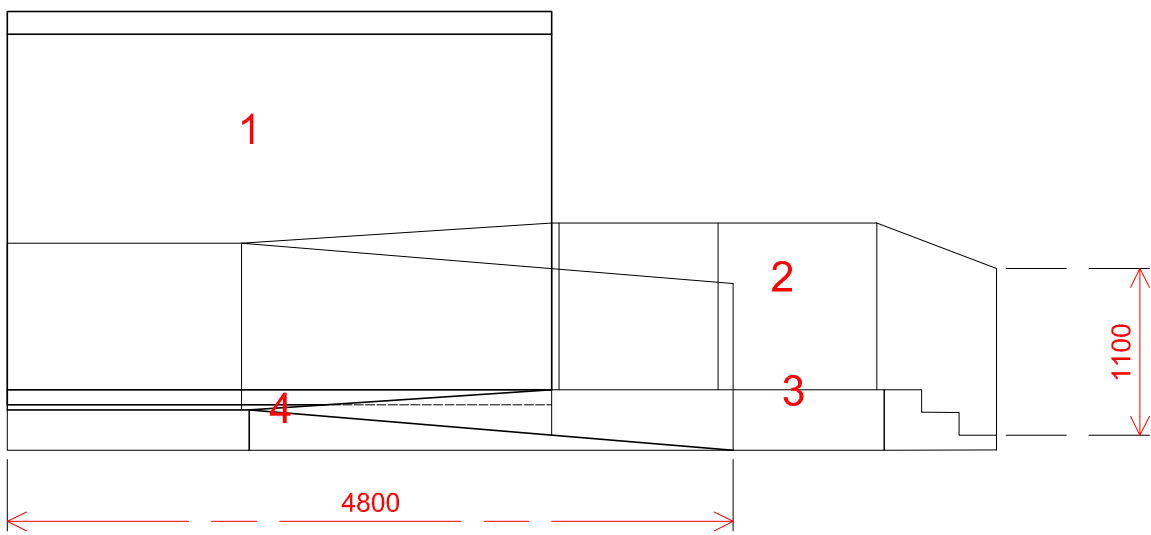
- 1
- CONSULTATION HUB WITH GLAZED WINDOWS AND DOORS TO FRONT ELEVATION AND VINYL, BRANDED WRAP TO SOLID WALLS.
- 2
- BALUSTRADE - TYPE AND MATERIALITY TO BE DECIDED.
- 3
- TIMBER DECKING AND STAIRS WITH SLIP RESISTANT FINISH.
- 4
- TIMBER RAMP WITH SLIP RESISTANT FINISH.
- 5
- TIMBER SKIRTING ALONG BOTTOM OF CONSULTATION HUB.



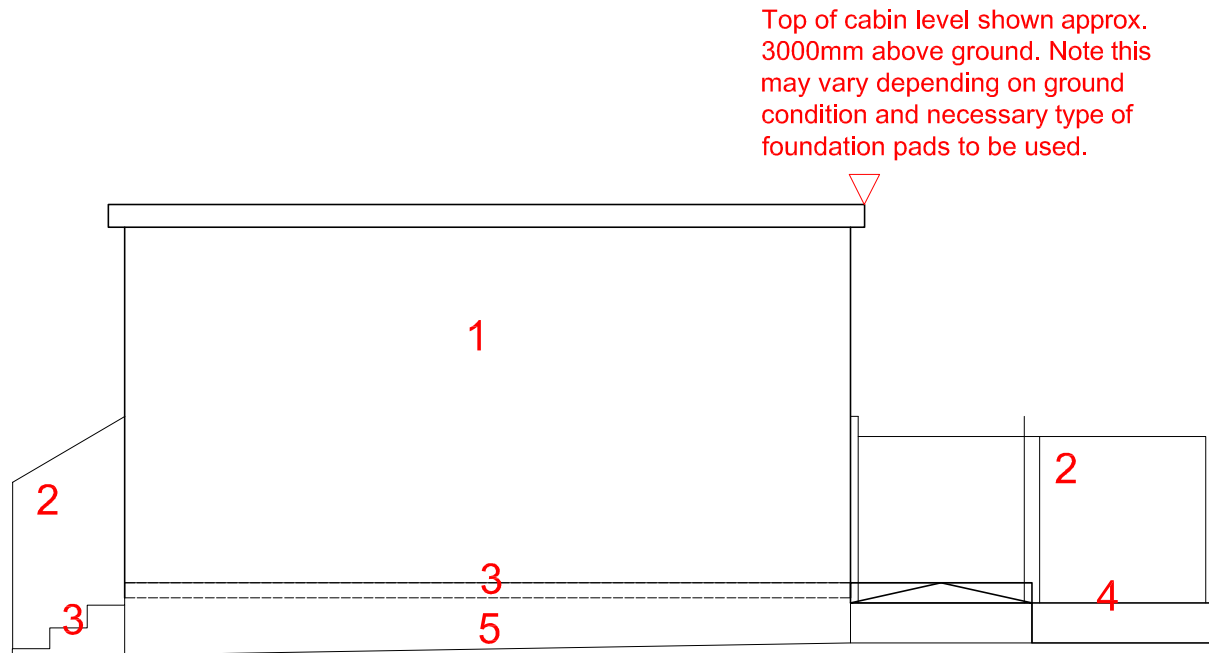
WEST ELEVATION - PROPOSED (FRONT)



SOUTH ELEVATION - PROPOSED (RIGHT)



NORTH ELEVATION - PROPOSED (LEFT)



EAST ELEVATION - PROPOSED (BACK)