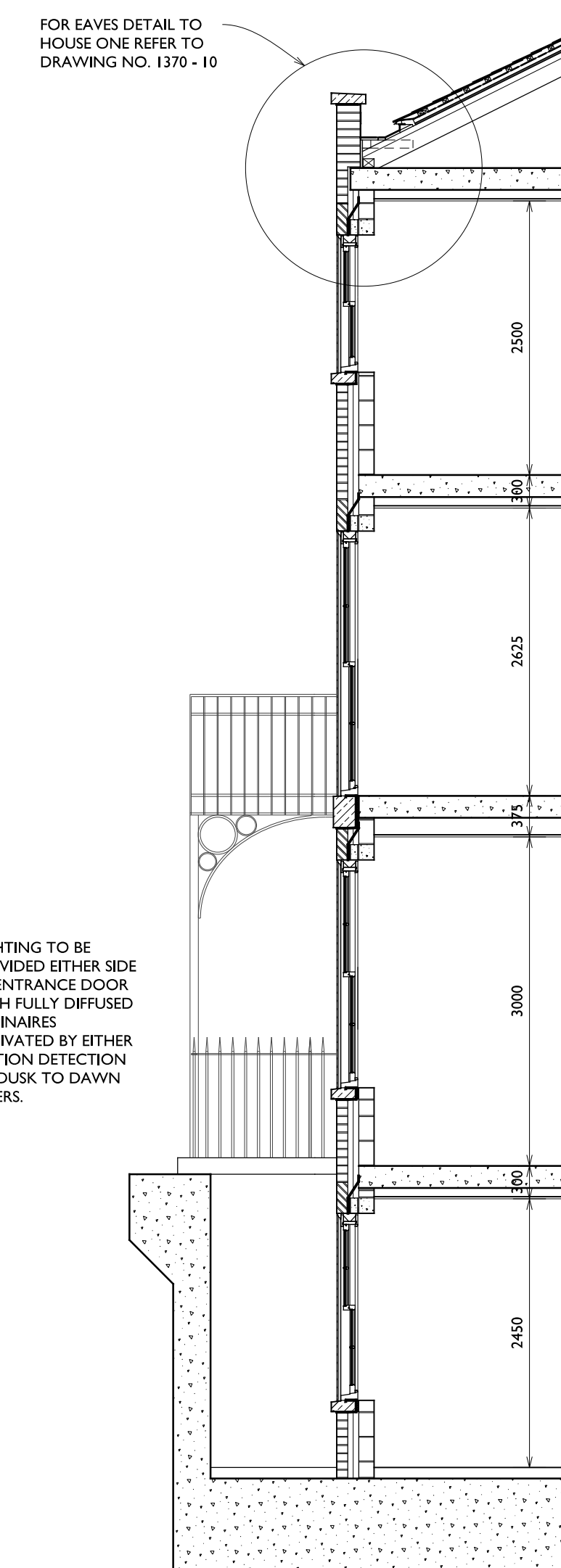
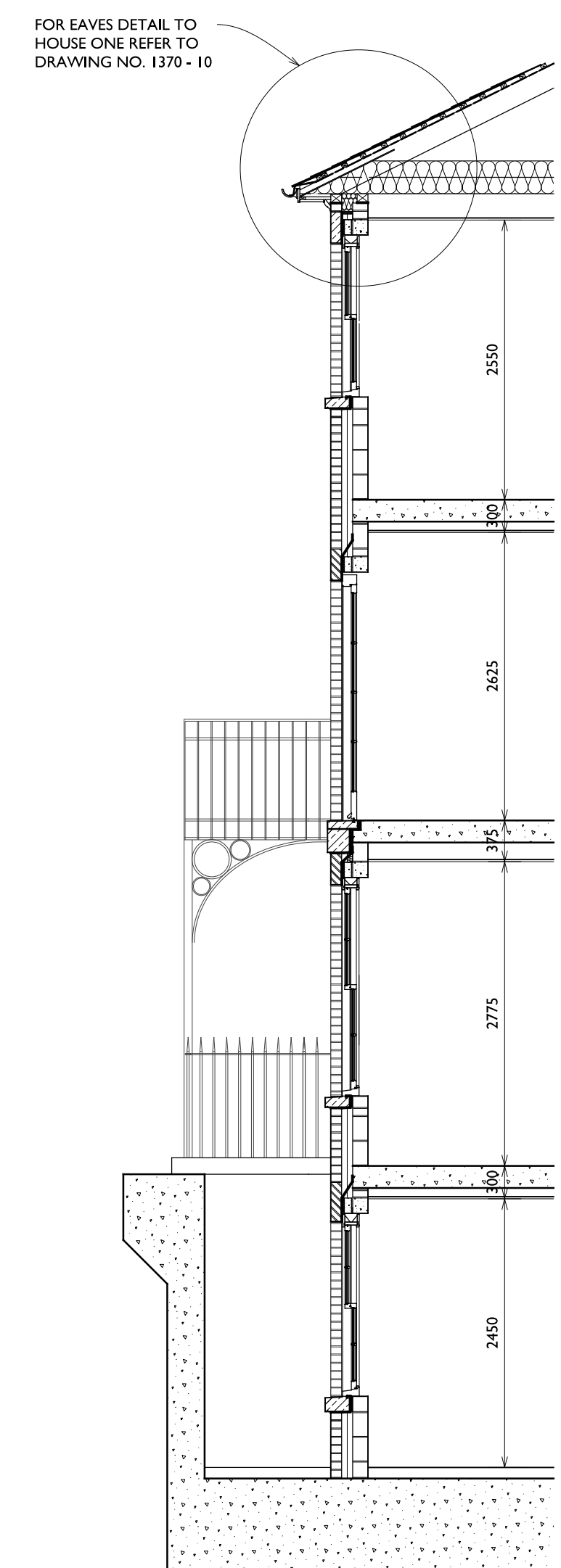




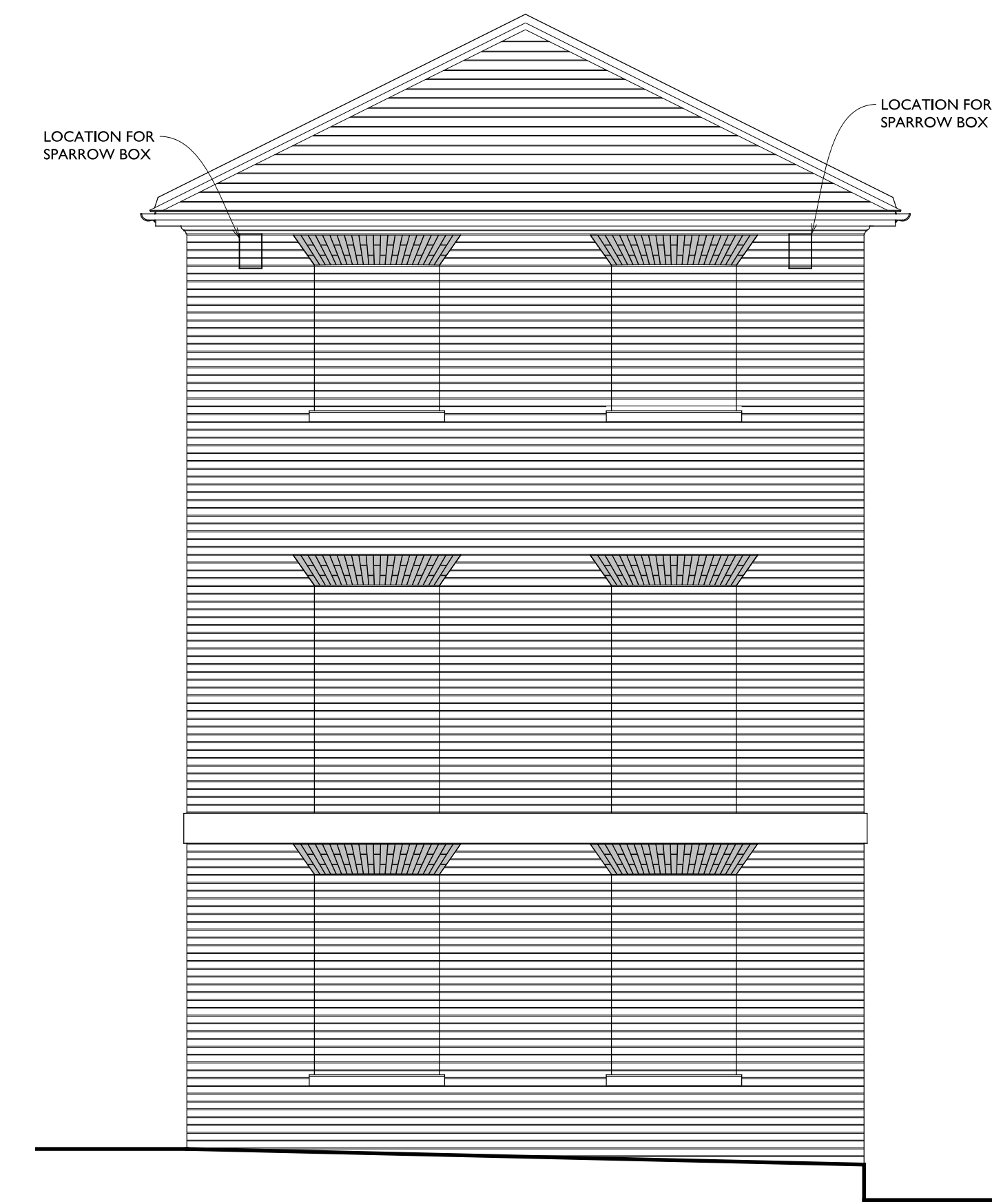
EAST ELEVATION



TYPICAL SECTION HOUSE ONE



TYPICAL SECTION HOUSE TWO

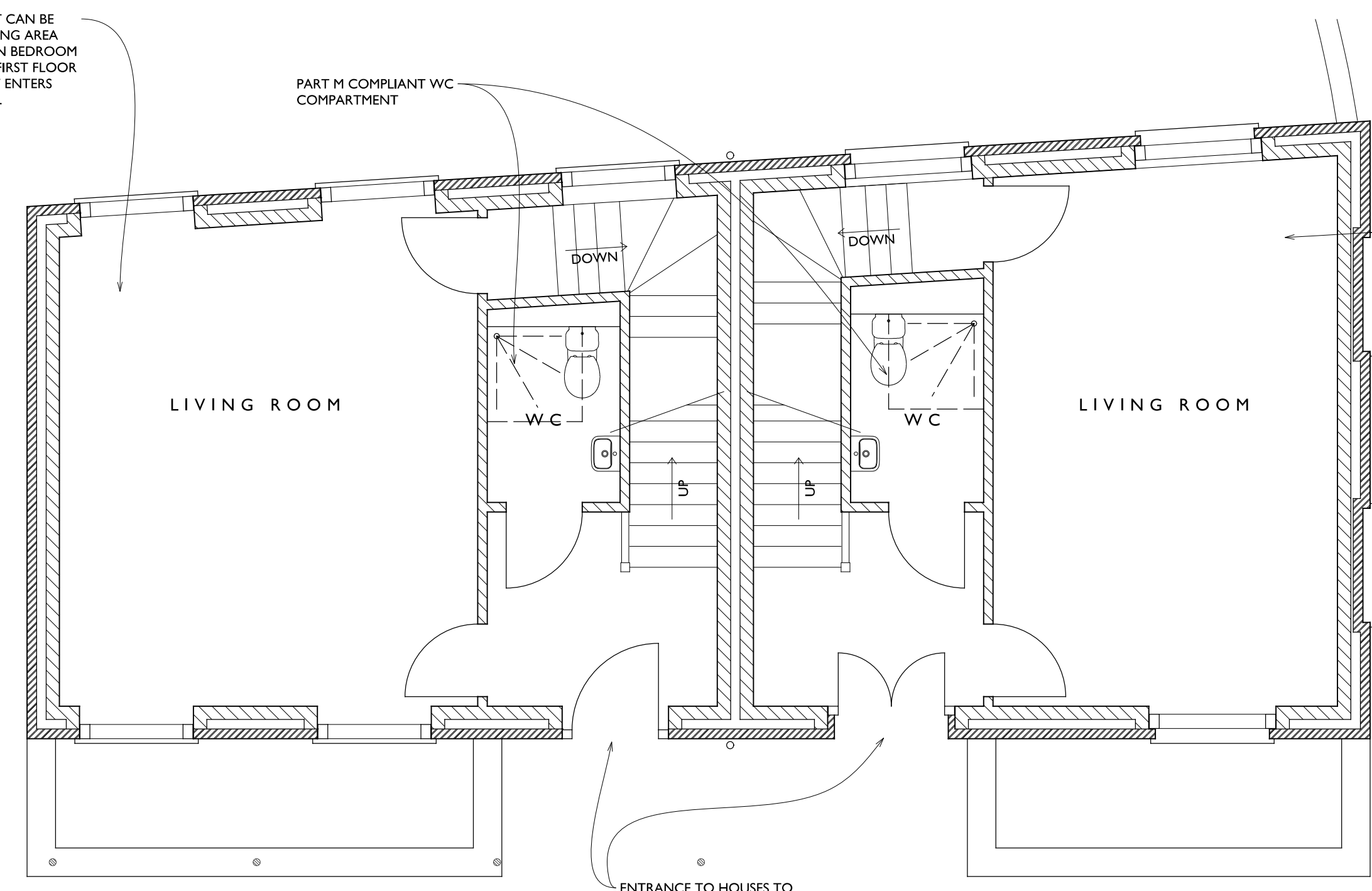


NORTH ELEVATION



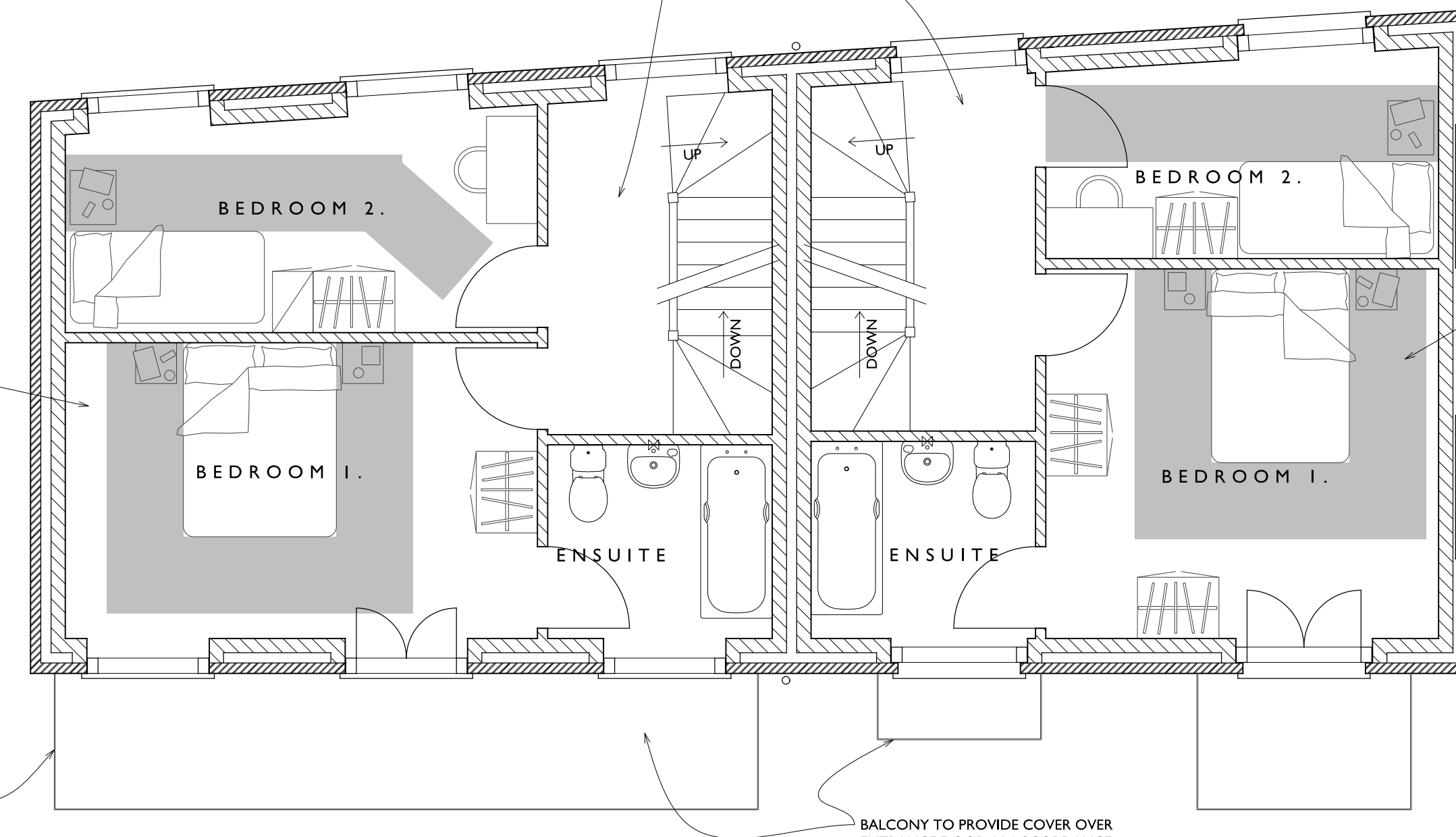
WEST ELEVATION

THROUGH THE FLOOR LIFT CAN BE LOCATED WITHIN THE LIVING AREA, PASSING UP INTO THE MAIN BEDROOM ABOVE OR ALTERING THE FIRST FLOOR LAYOUT SO THAT THE LIFT ENTERS INTO CIRCULATION SPACE.



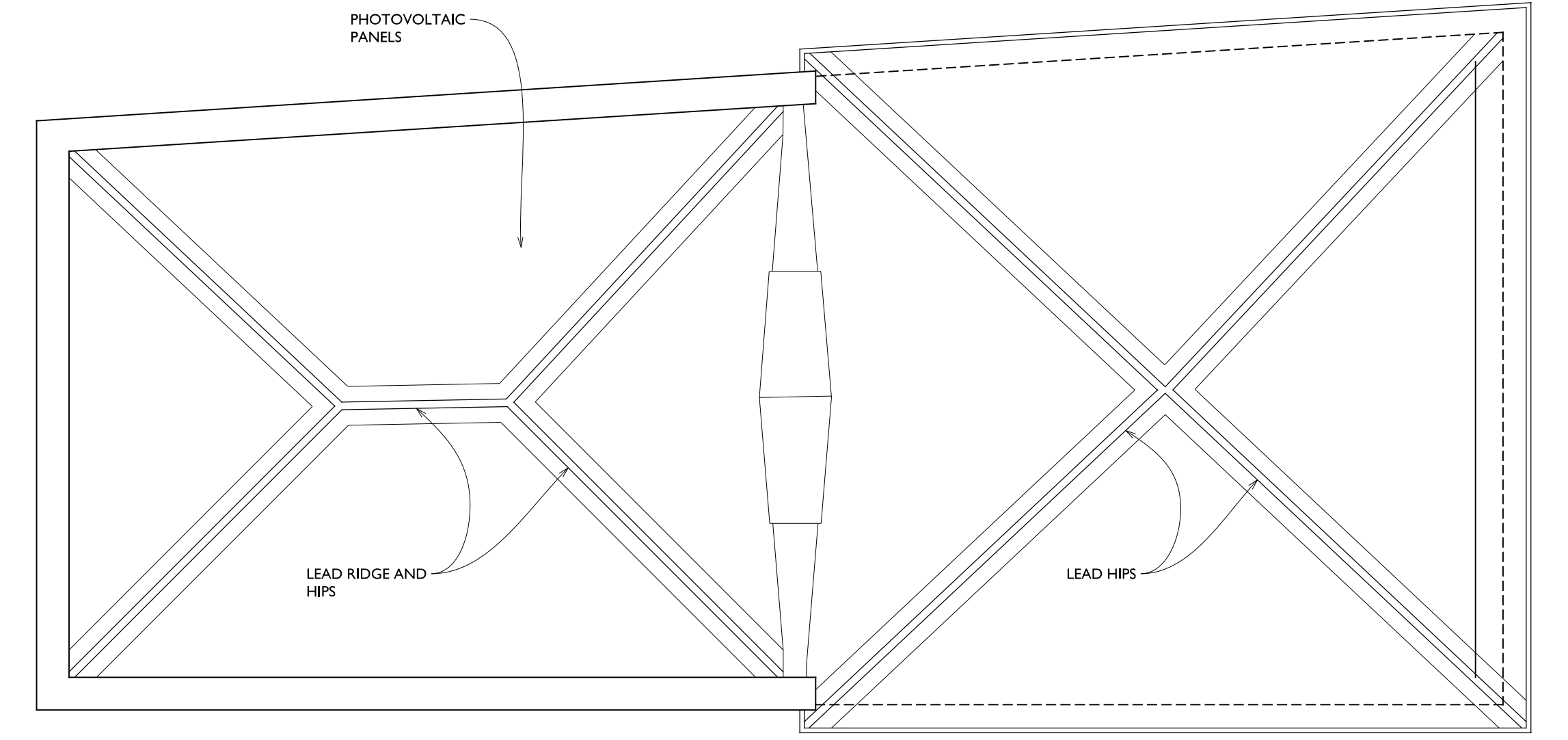
GROUND FLOOR PLAN

THROUGH THE FLOOR LIFT CAN BE LOCATED WITHIN THE LIVING AREA PASSING UP INTO THE MAIN BEDROOM ABOVE OR ALTERING THE FIRST FLOOR LAYOUT SO THAT THE LIFT ENTERS INTO CIRCULATION SPACE.



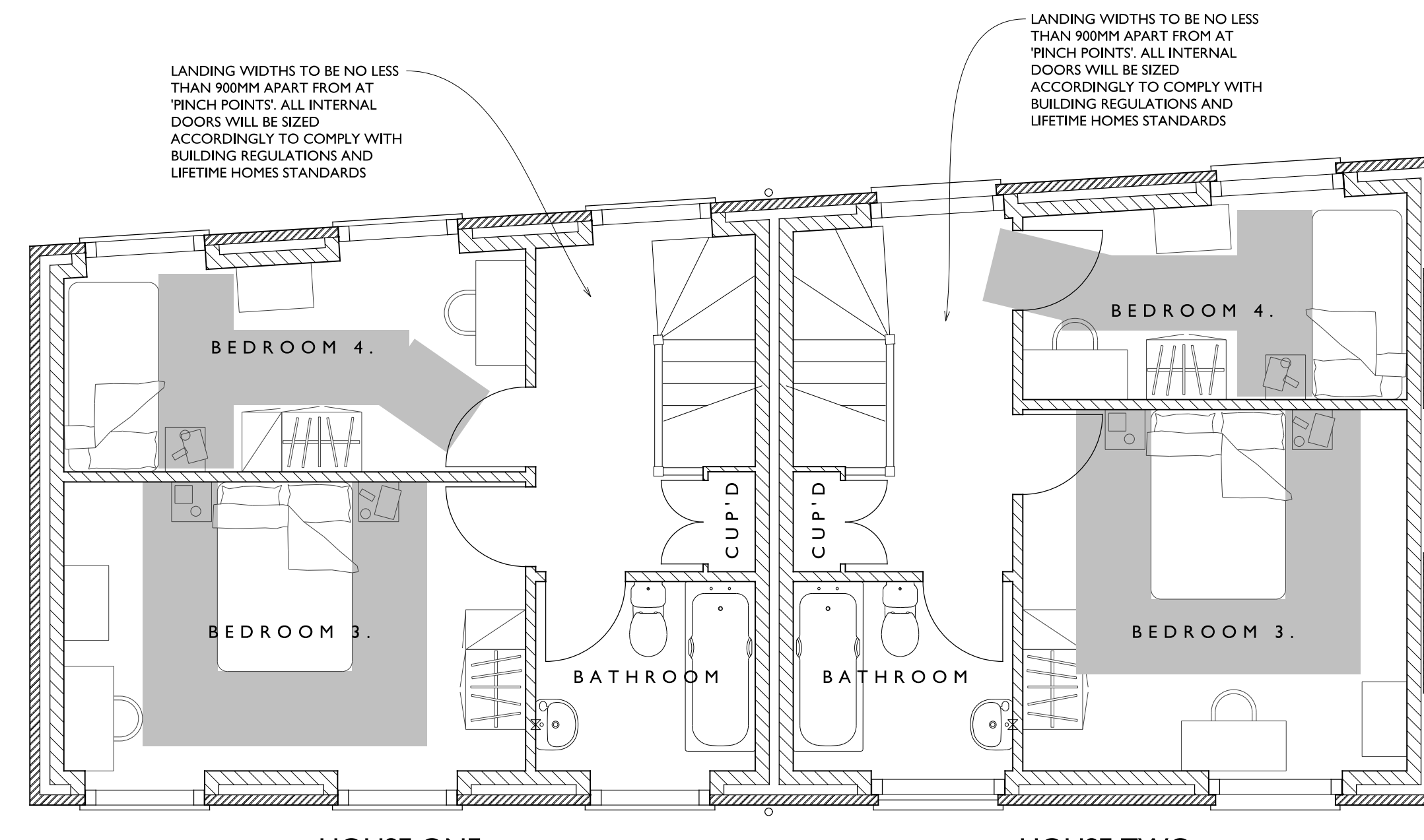
FIRST FLOOR PLAN

THROUGH THE FLOOR LIFT CAN BE LOCATED WITHIN THE LIVING AREA PASSING UP INTO THE MAIN BEDROOM ABOVE OR ALTERING THE FIRST FLOOR LAYOUT SO THAT THE LIFT ENTERS INTO CIRCULATION SPACE.



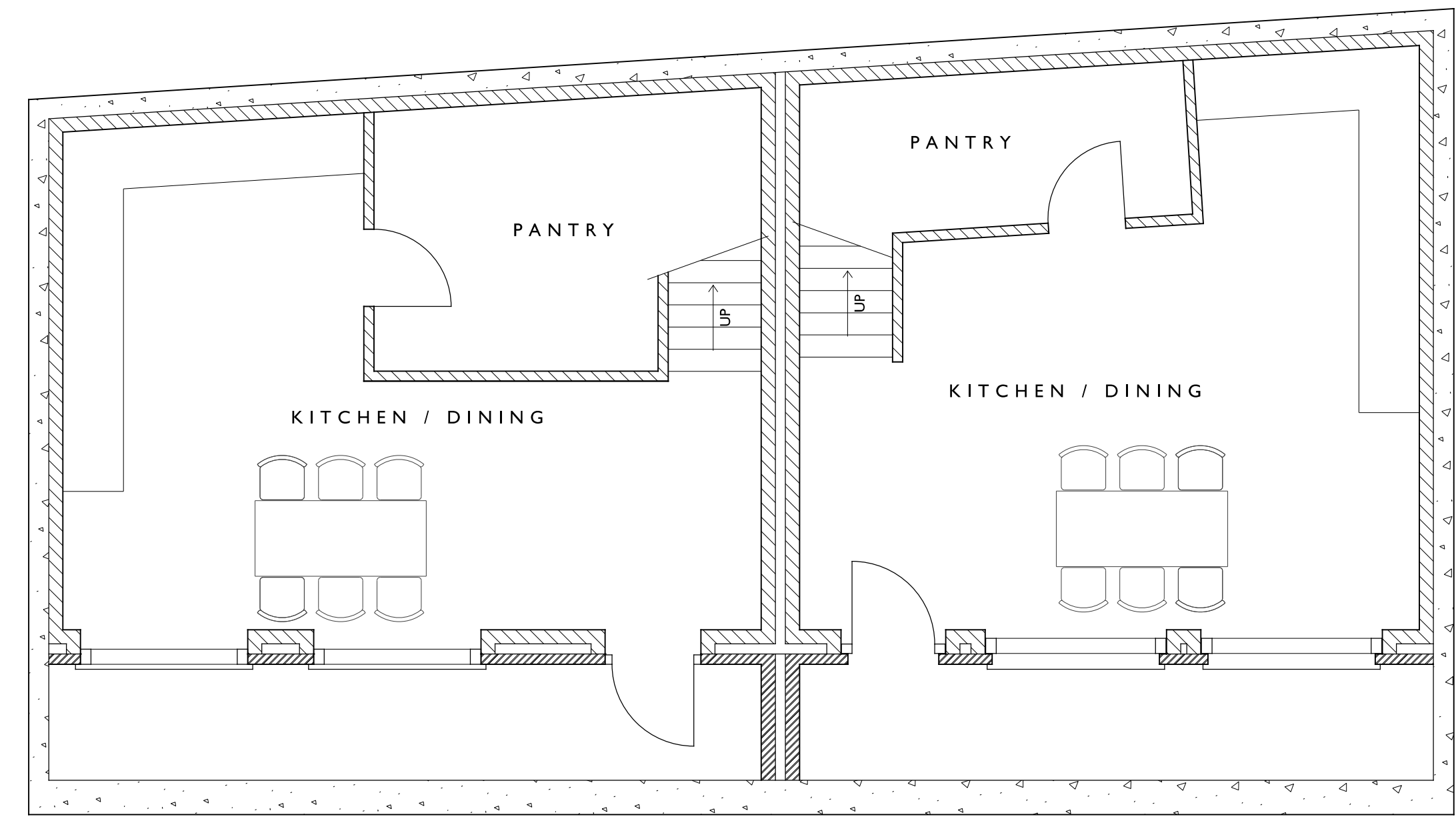
ROOF PLAN

LANDING WIDTHS TO BE NO LESS THAN 900MM APART FROM AT TRINCH POINTS. ALL INTERNAL DOORS WILL BE SIZED ACCORDINGLY TO COMPLY WITH BUILDING REGULATIONS AND LIFETIME HOMES STANDARDS.



SECOND FLOOR PLAN

SHADED AREAS INDICATE CLEAR ACCESS ZONES ACCORDING TO APPROVED DOCUMENT M (1) 2.25



BASEMENT

MATERIALS
LONDON STOCK BRICK IN LIME MORTAR AND FLESH-BOND, RUBBED AND GAUGED BRICK ARCHES, TIMBER SASH WINDOWS SET WITH BRICK RISERS, THIN GLAZING BARS AND STONE OILS ALL TO QUINLAN TERRY ARCHITECTS DETAILS. NATURAL SLATE TO ROOF. CAST IRON BALUSTRADES, STONE STRING COURSE AND COPING. IRON RAILINGS TO BASEMENT AREAS.

REVISIONS:
REV B - BALCONIES ADDED AND REAR GROUND FLOOR WINDOWS REVISED - 07-03-2017
REV C - DRAWING UPDATED - 20-03-2017
REV D - DRAWING UPDATED WITH BASEMENT ELEVATION - 15-03-2017
REV E - DRAWING UPDATED SHOWING CYCLE LOCKERS TO GROUND FLOOR - 12-04-2017
REV F - DRAWING UPDATED FOLLOWING PLANNING COMMENTS - 18-05-2017
REV G - DRAWING UPDATED AND ROOF PLAN ADDED - 19-05-2017
REV H - CYCLE STORAGE REPOSITIONED FROM WITHIN DWELLINGS - 14-09-2017
REV I - BASEMENT LAYOUT ADJUSTED - 25-09-2018
REV K - BASEMENT LIGHTWELL ADJUSTED - 25-09-2018
REV L - BASEMENT LAYOUT ADJUSTED - 27-09-2018
REV M - DRAWING UPDATED - 10-03-2020
REV N - DRAWING UPDATED FOR PLANNING - 10-03-2020
REV O - BAT AND BIRD BOXES ADDED - 16-04-2020

QUINLAN TERRY ARCHITECTS LLP
OLD EXCHANGE,
HIGH STREET, DEBHAM,
ESSEX, CO7 6HA

9TH JANUARY 2017
DRAWING No.: 1370/3 'O'
SCALE: 1:50 SCALE @ A0
PLANS AND ELEVATIONS

