

Note: This working General Arrangement is to assist contractors on site and is to be strictly read in conjunction with the latest **Sessun Designer** drawings that which take precedent.

Electrical Legend

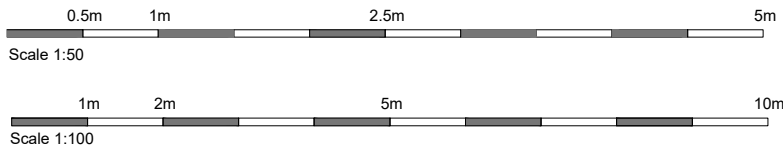
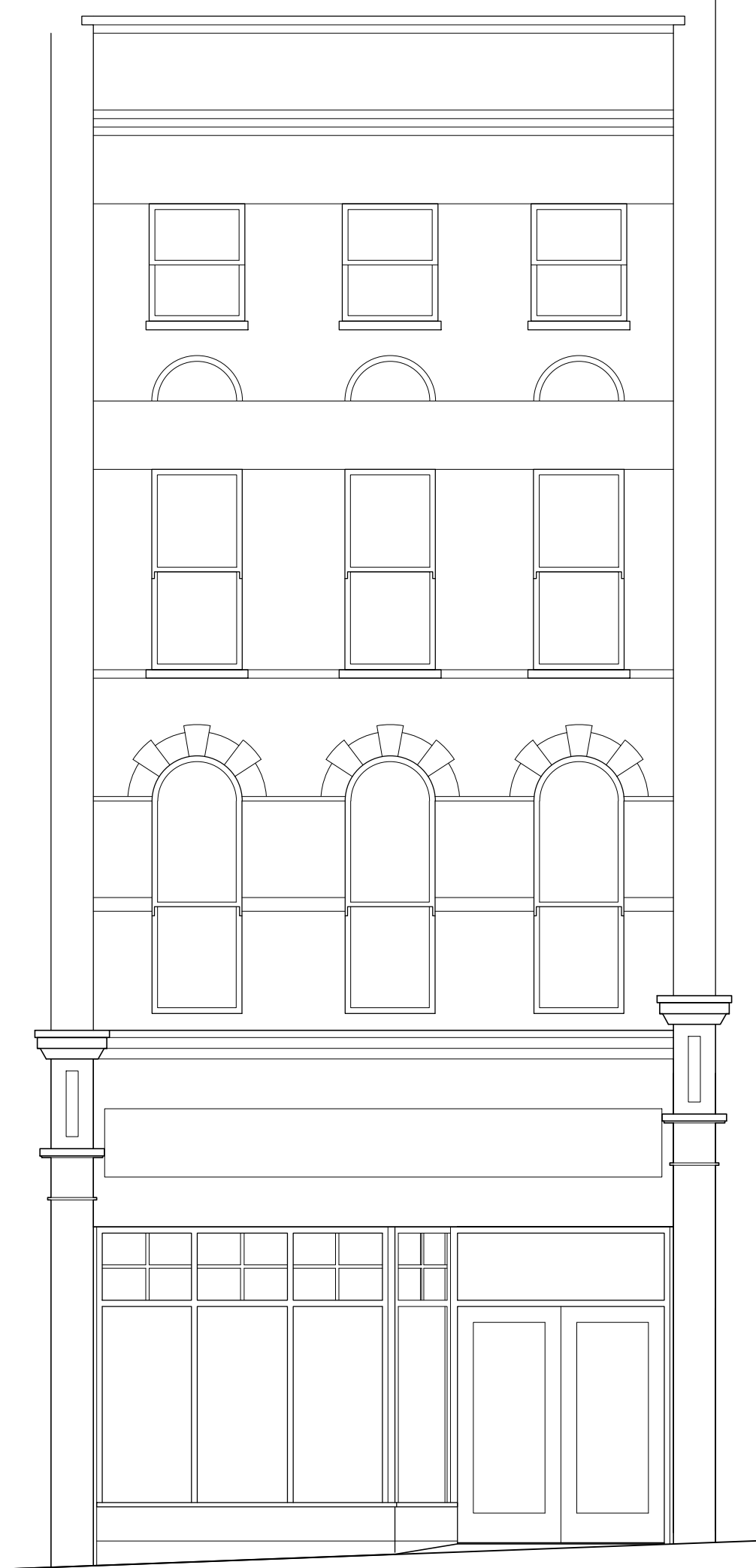
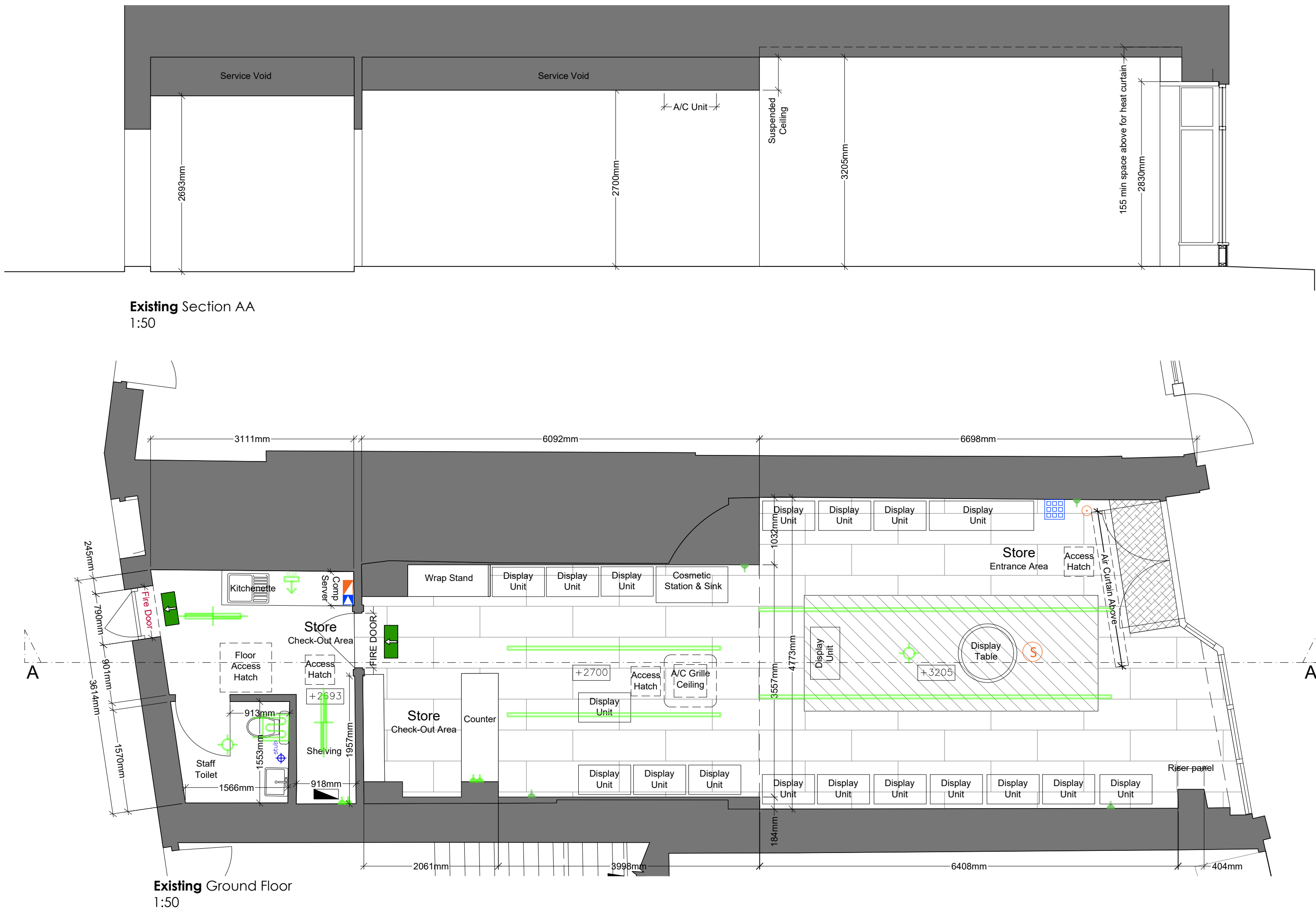
Indication Only - Refer to Electrical Contractors Drawing

- Security Panel
- Single Switched Spur
- 1 Cat 4 Data
- CV 20AMP Spur within ceiling void for AMU
- Emergency Lighting
- Lighting Track
- Single low level switched socket outlet, 13 AMP.
- Double low level switched socket outlet, 13 AMP.
- Double low level switched socket outlet, 13 AMP.
- Electric Water Heater
- Distribution board

Smoke & Fire Detection

Indication only - Refer to Fire Detection Contractors Drawing

- Ceiling Void - Smoke detector
- Smoke Detector
- Call Point
- Flashing Beacon
- Fire Alarm Panel
- Fire Escape Signage
- Compartment Wall: 30min Fire Resistance
- Compartment Wall: 60min Fire Resistance
- Existing Wall



Notes:

Do not scale from these drawings. Figured dimensions only are to be used. All critical dimensions are to be checked on site before work proceeds. If in doubt ask.

All drawings are to be read in conjunction with all other relevant consultants and / or specialists drawings or documents.

Inconsistencies, errors and omissions found within documents (and also in relation to other consultants/specialists documents) are to be notified immediately to RSK Consulting

Revisions:

Job	61 Hampstead HS		
Title	Proposed Plans, Sections		
Scale	1:50	Date	26/04/22
Drawn By		Status	
Drwg. No.	2170_101		
Revisions	A		
RSK Consultants			