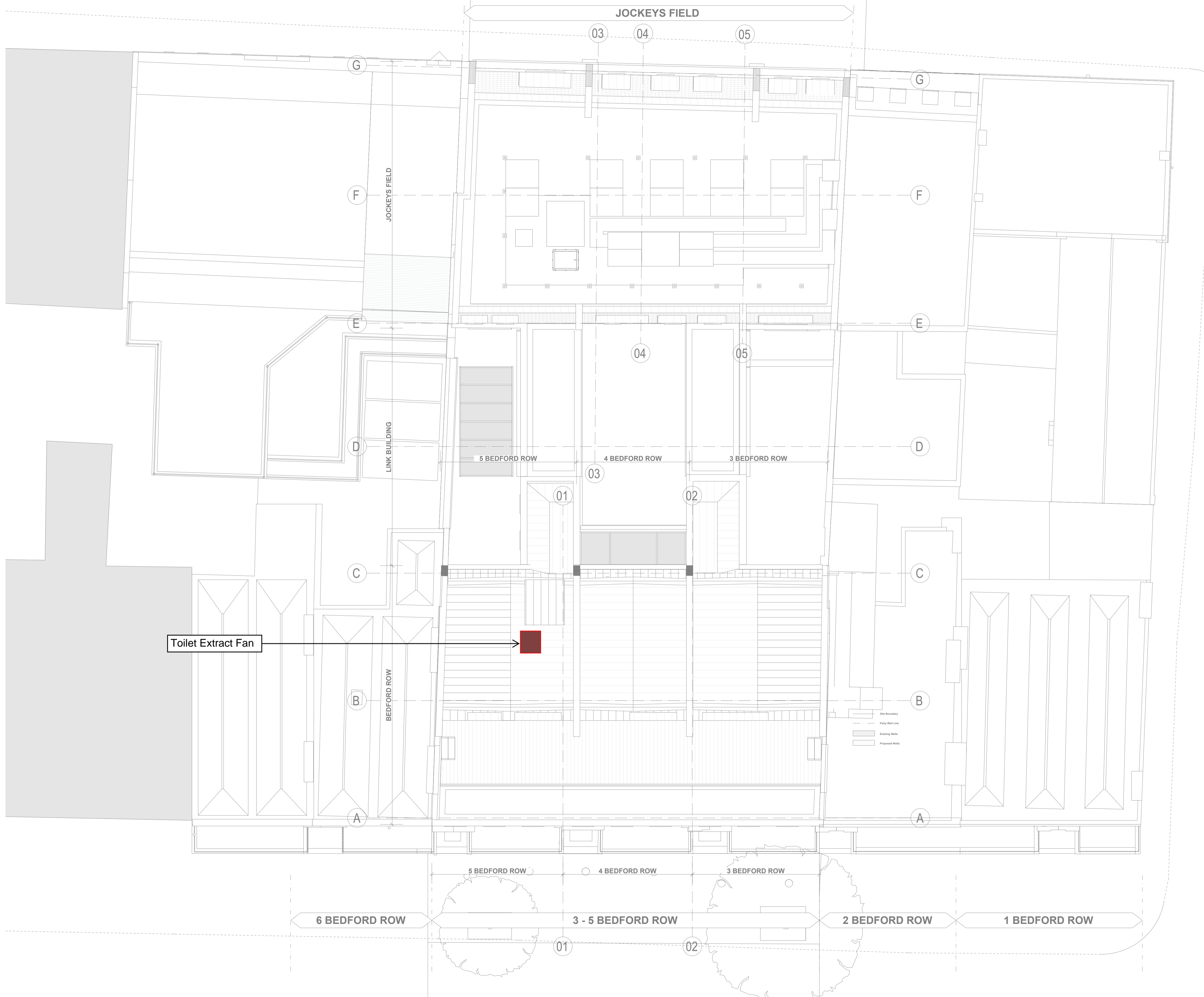


Notes:



Rev	Date	Description	DRN
P2	Oct 22	Stage 2	
P1	Sep 22	Stage 2	

Status: **PRELIMINARY**

Cream
Cream Engineering Services
 204 Super Hall
 Colliers,
 C20 6HY
 t: 01883 818370
 www.creamengineering.co.uk

Client: **FROGMORE ESTATES**

Architect: **HÚT ARCHITECTURE**

Project: **3 - 5 BEDFORD ROW LONDON**

Drawing: **ROOF SERVICES PRINCIPLES**

Filename: 2221-CES-BR | Job No: 2221

Date: AUG 2022 | Scale: 1:100 @ A1

Drg No: 2221-CES-BR-ZZ-RF-DR-Z-1001 | Revision: P2

This drawing is property of Cream Engineering Services Ltd. Copyright is reserved by Cream Engineering Services Ltd and the drawing shall not be copied, reproduced or otherwise used without consent of C.