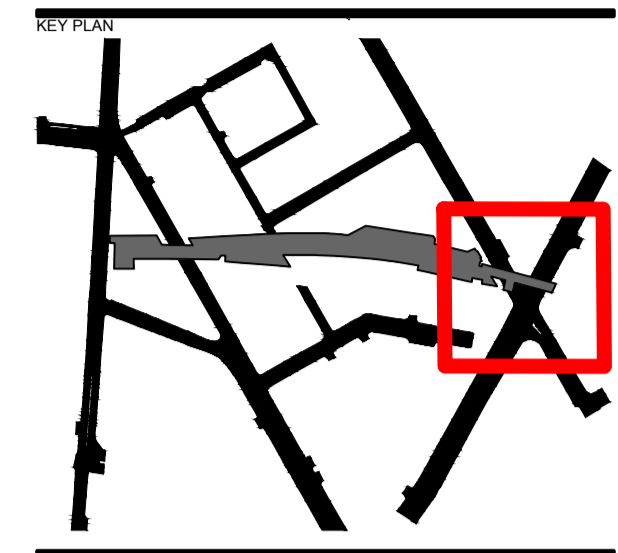


REVISION/ISSUANCE		
NO.	DESCRIPTION	DATE
1	50% CONCEPT DESIGN	18.10.2021
2	100% CONCEPT DESIGN	20.12.2021
3	PLANNING SUBMISSION	MAY 2022
4	PLANNING - REMOVAL OF BALCONY AT RCST	26.10.2022



CONCEPT DESIGN
NOT FOR CONSTRUCTION

CLIENT TEAM:
Camden Highline & Camden Town Unlimited
Top Container, 5-7 Buck Street, London NW1 8N.

LANDSCAPE ARCHITECT:
JAMES CORNER FIELD OPERATIONS
415 Tenth Ave, 5th Floor, New York, NY 10018

vPPR Architects - Architecture
22 Prince of Wales Rd, London NW5 3LG

Tony Gee - Train/Network Rail Engineering
Hardy House, 140 High Street, Surrey KT10 9QJ

AKT II Engineering - Civil & Structural
White Collar Factory, 1 Old Street Yard
London EC1Y 8AF

Speirs Major - Lighting Design
8 Shepherdess Walk, London N1 7LB

RLB - Cost Estimator
Level 3, 110 Bishopsgate, London, EC2N 4AY

Street Space - Community Outreach
50 Cambridge Road, Barking IG11 8FG

Pentagram - Signage
11 Needham Road, London W11 2RP

Piet Oudolf - Horticulture
Broekstraat 17, 6999 DE, Hummelo, NL

Hew Locke - Art
Hales Gallery, The Tea Building,
7 Bethnal Green Road, London, E1 6LB

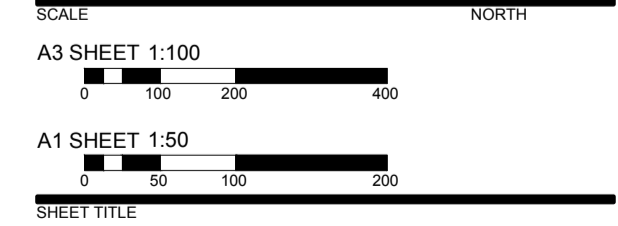
Atelier Ten - Sustainability
19 Perseverance Works, 38 Kingsland Road,
London E2 8DD

Authentic Futures - Heritage
Ground Floor, 72-74 Mare Street, London E8 4RT

PROJECT NAME:
CAMDEN HIGHLINE
223 Royal College Street
London
NW1 9LT

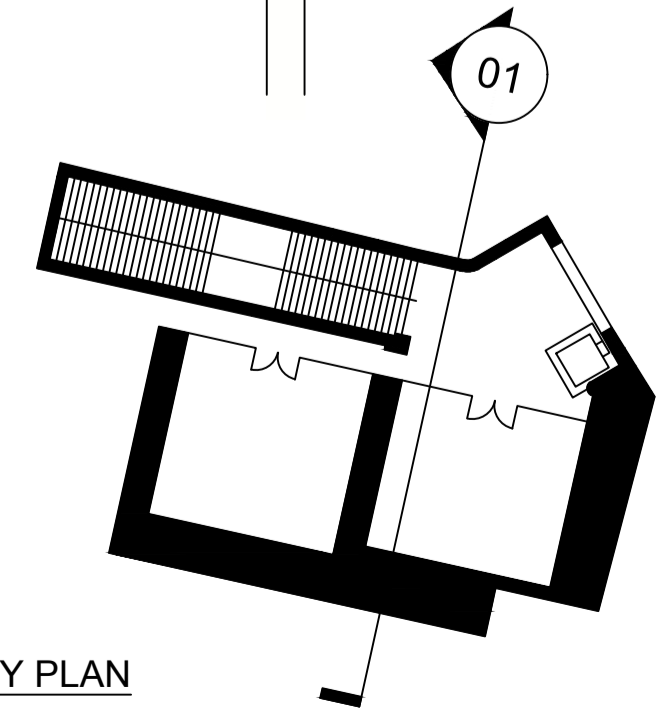
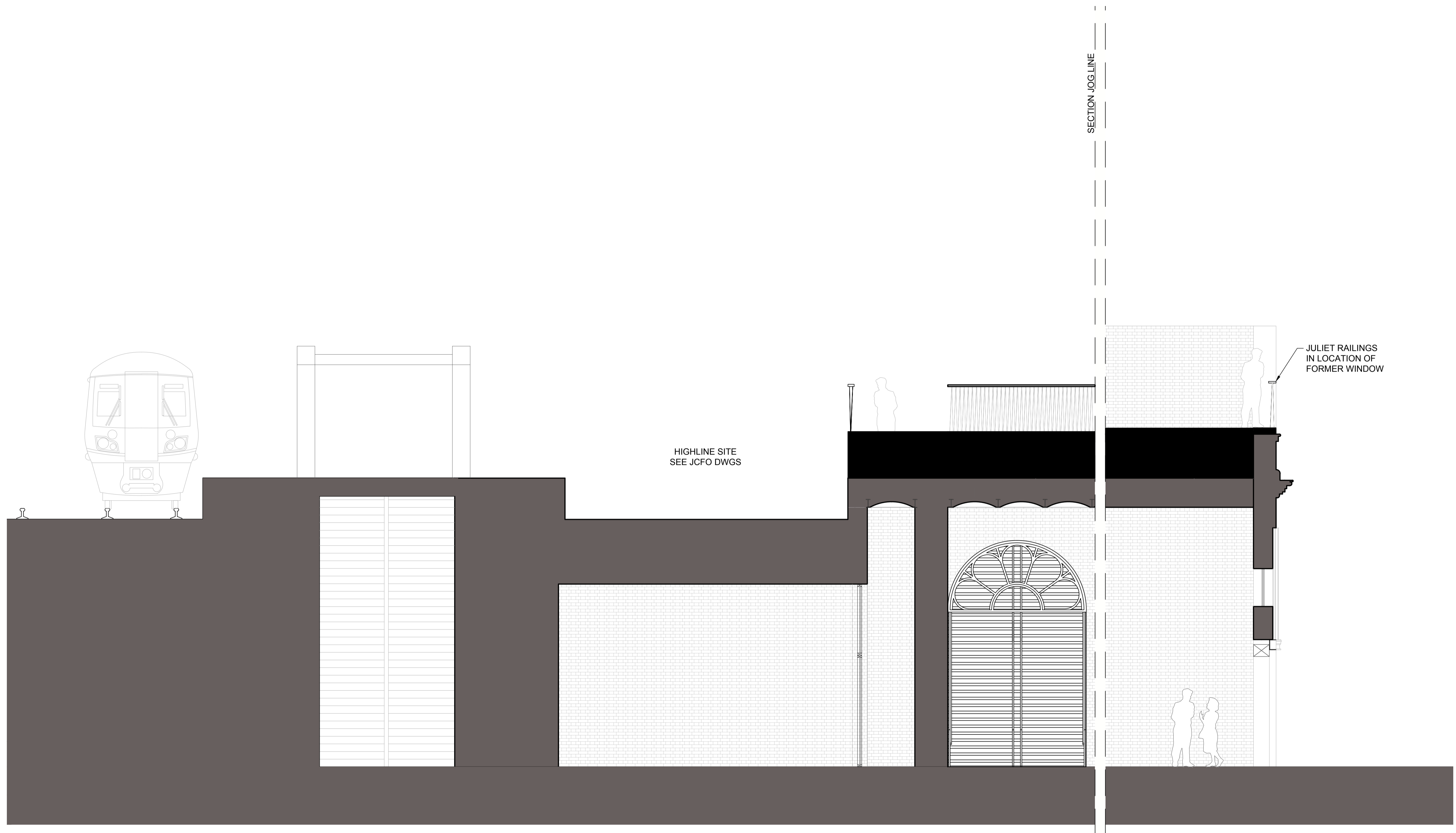
JCFO PROJ # 2105
PROJECT PHASE:
Concept Design

DESIGNED BY: vPPR
DRAWN BY: CM
CHECKED BY: TvP



SHEET TITLE:
**PROPOSED SECTION:
223 ROYAL COLLEGE STREET**

SHEET NUMBER:
A-P1-312



LEGEND

	EXISTING WALL
	NEW BUILD-UP (FOR HIGHLINE SURFACE SEE FO DWGS)
	METAL STRINGER & BALUSTRADE
	MESH & GLASS

01 PROPOSED SECTION: 223 ROYAL COLLEGE STREET
SECTION SCALE: 1:100 A3, 1:50 A1