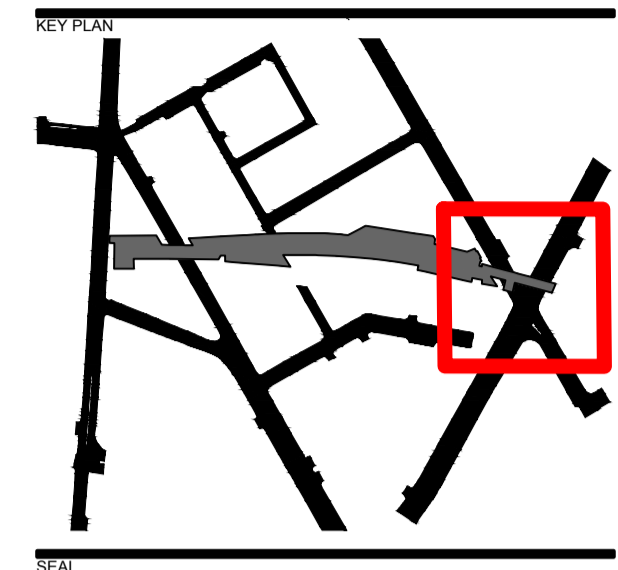


REVISION/ISSUANCE		
NO.	DESCRIPTION	DATE
1	50% CONCEPT DESIGN	18.10.2021
2	100% CONCEPT DESIGN	20.12.2021
3	PLANNING SUBMISSION	MAY 2022
4	PLANNING - REMOVAL OF BALCONY AT RCST	26.10.2022



CONCEPT DESIGN

NOT FOR CONSTRUCTION

CLIENT TEAM:  
**Camden Highline & Camden Town Unlimited**  
 Top Container, 5-7 Buck Street, London NW1 8N.

LANDSCAPE ARCHITECT:  
**JAMES CORNER FIELD OPERATIONS**  
 415 Tenth Ave, 5th Floor, New York, NY 10018

vPPR Architects - Architecture  
 22 Prince of Wales Rd, London NW5 3LG

Tony Gee - Train/Network Rail Engineering  
 Hardy House, 140 High Street, Surrey KT10 9QJ

AKT II Engineering - Civil & Structural  
 White Collar Factory, 1 Old Street Yard  
 London EC1Y 8AF

Speirs Major - Lighting Design  
 8 Shepherdess Walk, London N1 7LB

RLB - Cost Estimator  
 Level 3, 110 Bishopsgate, London, EC2N 4AY

Street Space - Community Outreach  
 50 Cambridge Road, Barking IG11 8FG

Pentagram - Signage  
 11 Needham Road, London W11 2RP

Piet Oudolf - Horticulture  
 Broekstraat 17, 6999 DE, Himmelo, NL

Hew Locke - Art  
 Hales Gallery, The Tea Building,  
 7 Bethnal Green Road, London, E1 6LB

Atelier Ten - Sustainability  
 19 Perseverance Works, 38 Kingsland Road,  
 London E2 8DD

Authentic Futures - Heritage  
 Ground Floor, 72-74 Mare Street, London E8 4RT

PROJECT NAME:  
**CAMDEN HIGHLINE**  
 223 Royal College Street  
 London  
 NW1 9LT  
 JCFO PROJ # 2105

PROJECT PHASE:  
 Concept Design

DESIGNED BY: vPPR  
 DRAWN BY: CM  
 CHECKED BY: TvP

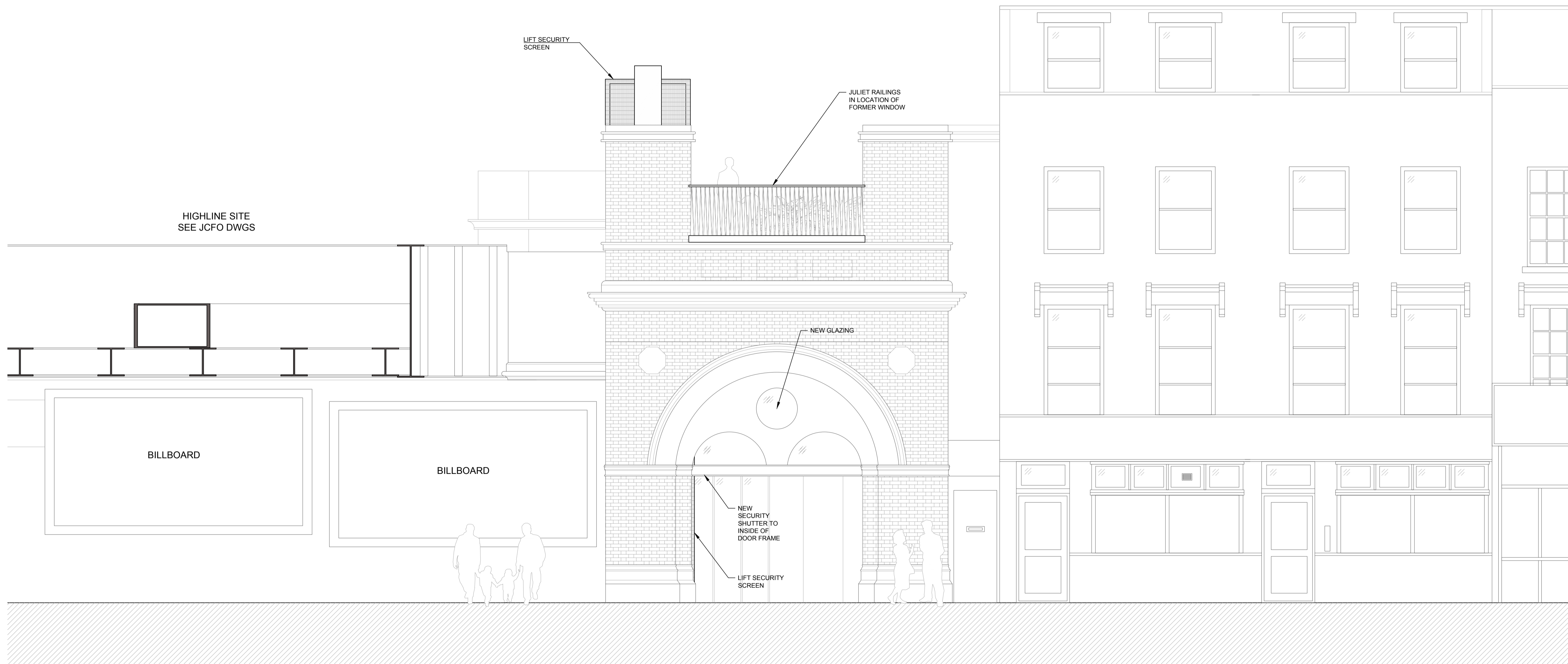
SCALE: NORTH  
 A3 SHEET 1:100  
 0 100 200 400

A1 SHEET 1:50  
 0 50 100 200

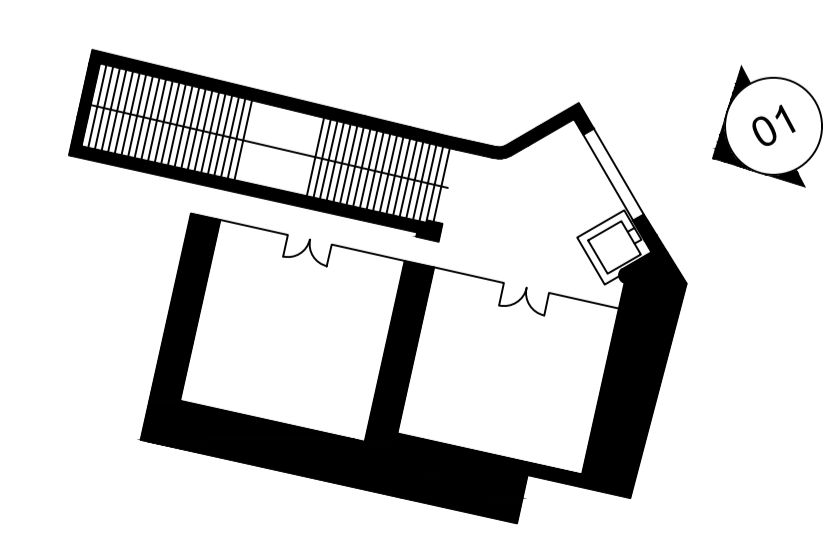
SHEET TITLE:  
 PROPOSED NORTH EAST ELEVATION:  
 223 ROYAL COLLEGE STREET

SHEET NUMBER:

A-P1-360



CAMDEN HIGHLINE ENTRANCE  
 223 ROYAL COLLEGE STREET



KEY PLAN

LEGEND

- METAL STRINGER & BALUSTRADE
- EXISTING BRICK ELEVATION
- MESH & GLASS

01 PROPOSED NORTH EAST ELEVATION: 223 ROYAL COLLEGE STREET  
 ELEVATION SCALE: 1:100 A3, 1:50 A1