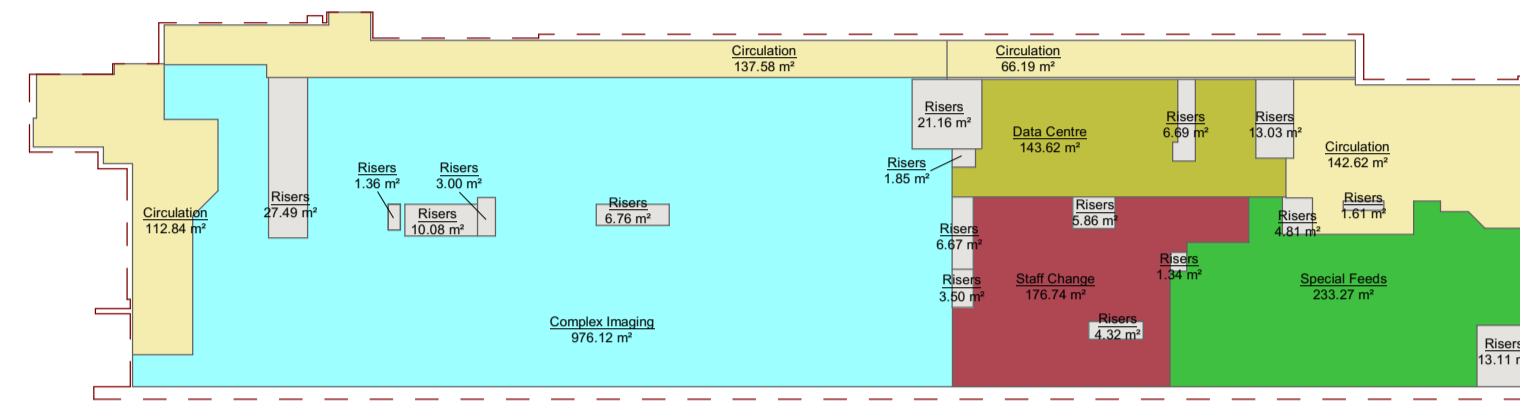
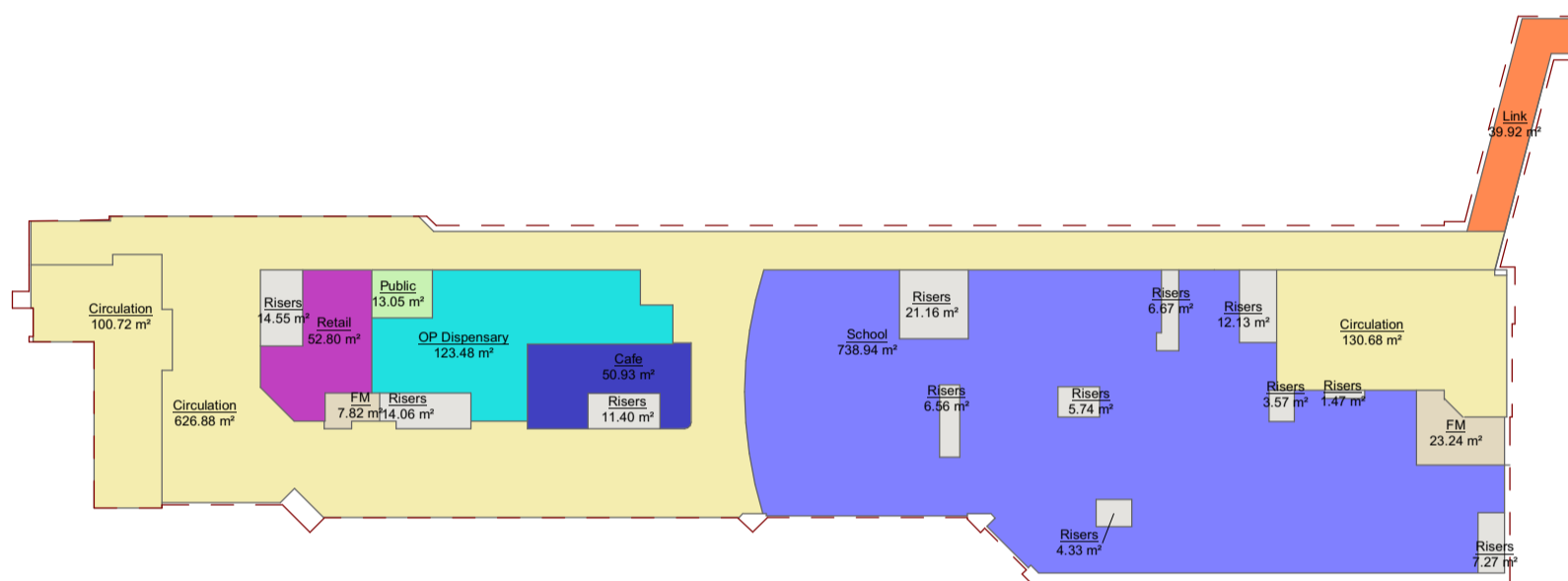


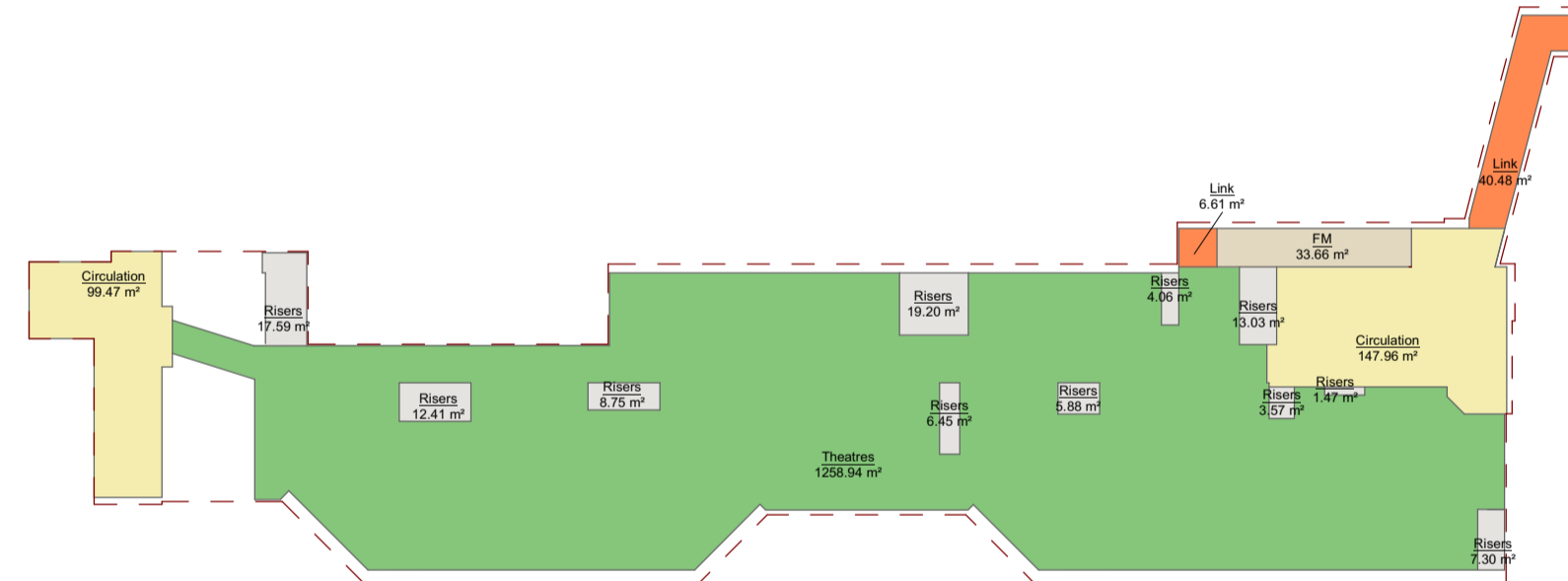
Level 0



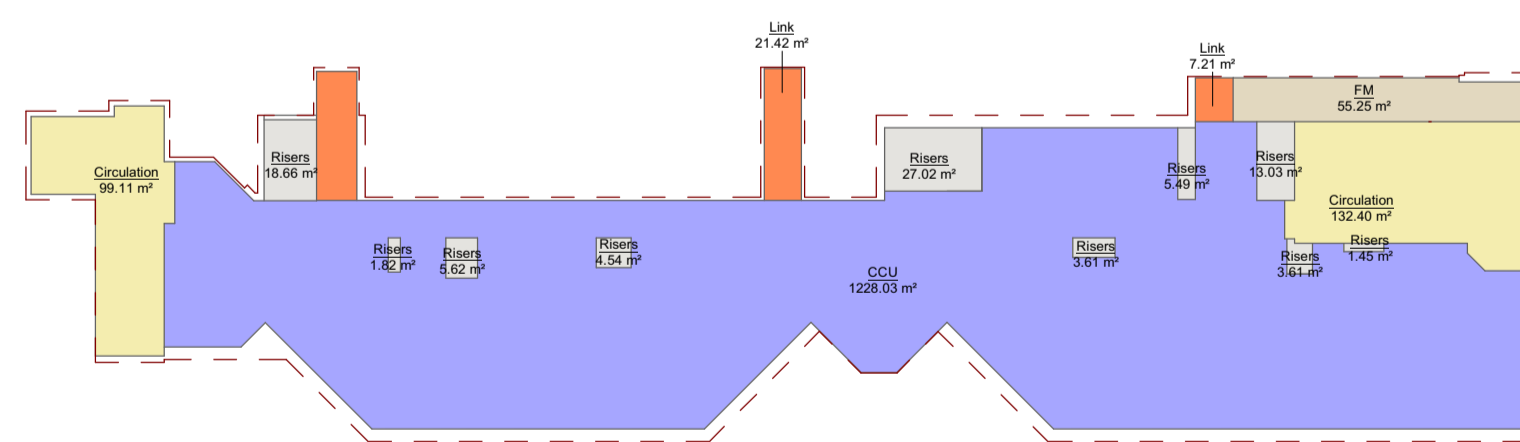
Level 1



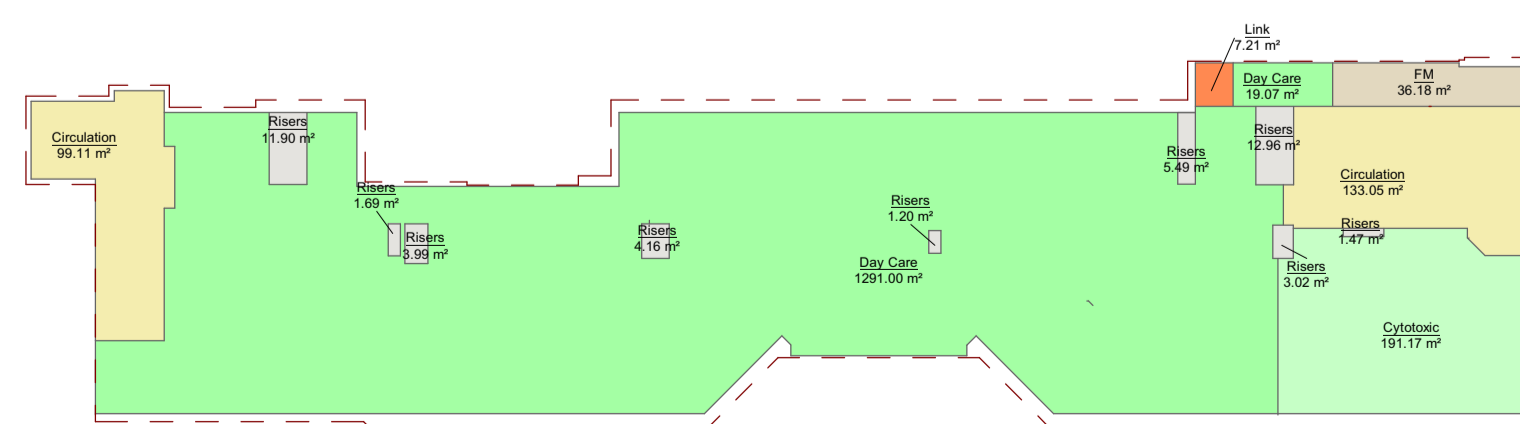
Level 2



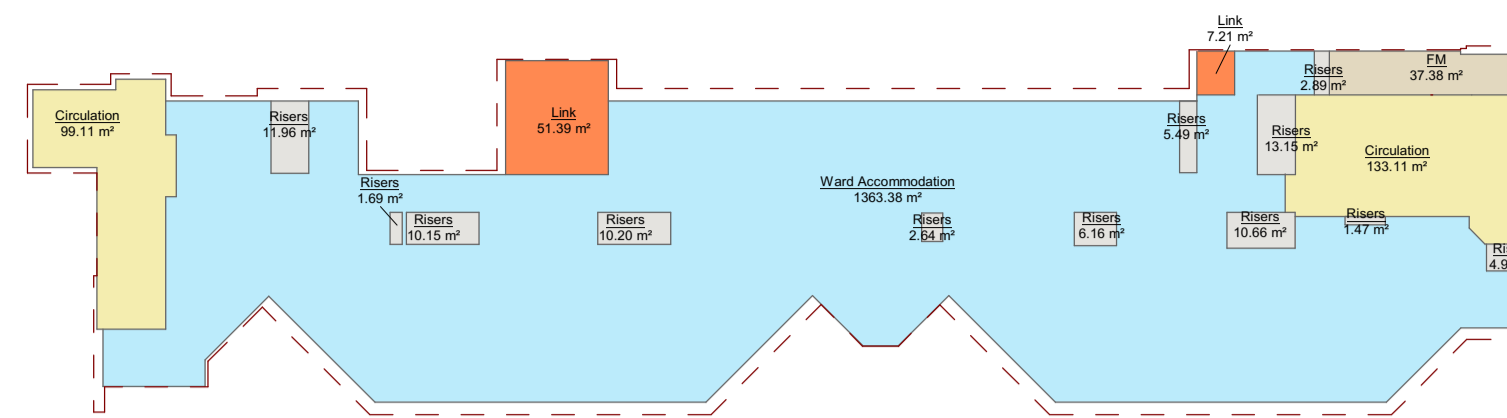
Level 3



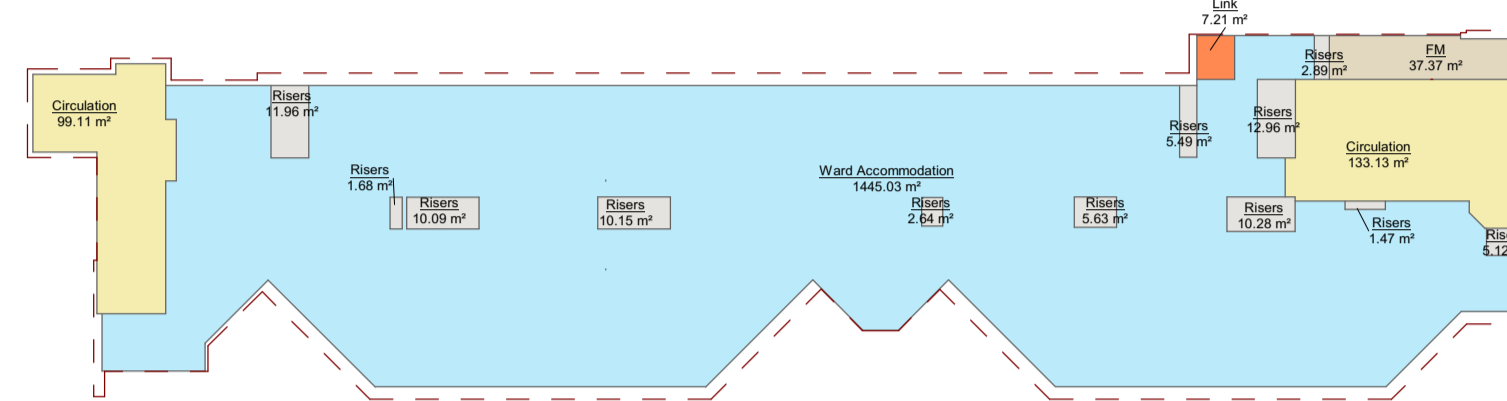
Level 4



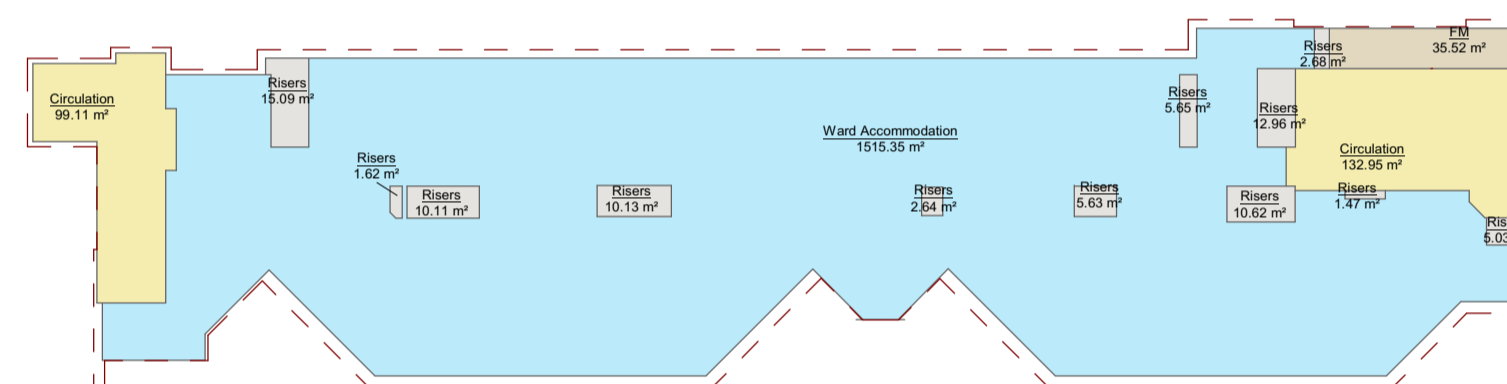
Level 5



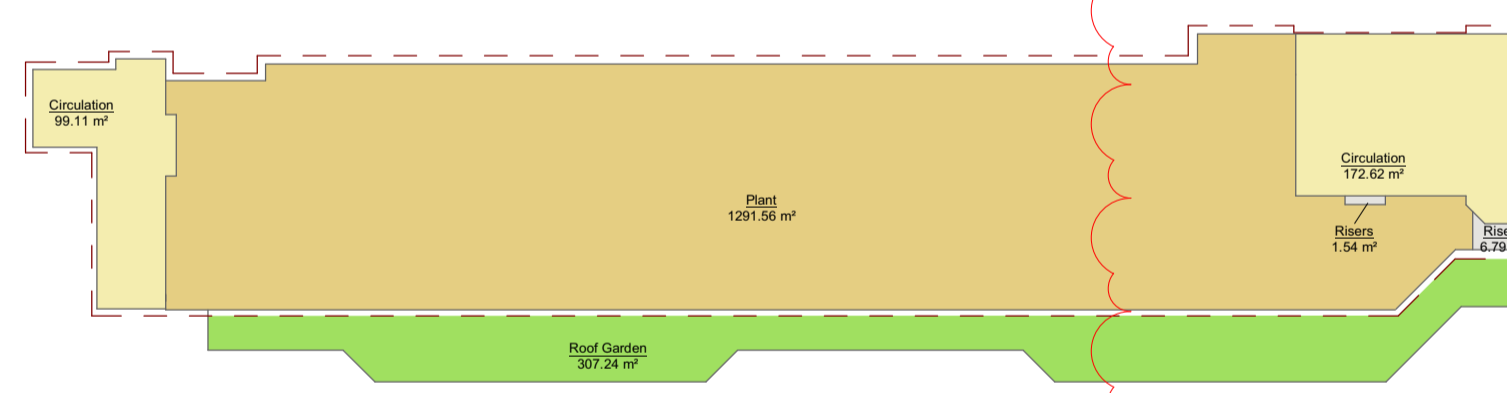
Level 6



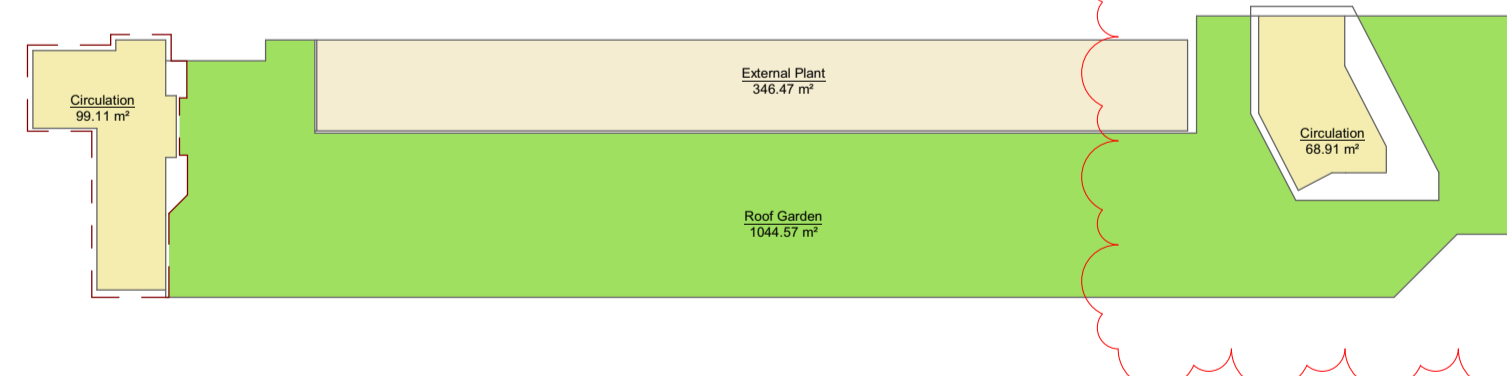
Level 7



Level 8



Level 9



Level 10

Area Schedule (GIA)	
VV	Area
Cafe	51 m <sup>2</sup>
CCU	1228 m <sup>2</sup>
Circulation	3320 m <sup>2</sup>
Complex Imaging	976 m <sup>2</sup>
Cytotoxic	191 m <sup>2</sup>
Data Centre	144 m <sup>2</sup>
Day Care	1310 m <sup>2</sup>
FM	266 m <sup>2</sup>
Link	211 m <sup>2</sup>
OP Dispensary	123 m <sup>2</sup>
Plant	2895 m <sup>2</sup>
Public	13 m <sup>2</sup>
Retail	53 m <sup>2</sup>
Risers	726 m <sup>2</sup>
School	739 m <sup>2</sup>
Special Feeds	233 m <sup>2</sup>
Staff Change	177 m <sup>2</sup>
Theatres	1259 m <sup>2</sup>
Ward Accommodation	4324 m <sup>2</sup>
	18240 m <sup>2</sup>

GIA by Level	
Level	Area
Level 0	1759 m <sup>2</sup>
Level 1	2122 m <sup>2</sup>
Level 2	2017 m <sup>2</sup>
Level 3	1687 m <sup>2</sup>
Level 4	1651 m <sup>2</sup>
Level 5	1823 m <sup>2</sup>
Level 6	1773 m <sup>2</sup>
Level 7	1802 m <sup>2</sup>
Level 8	1867 m <sup>2</sup>
Level 9	1572 m <sup>2</sup>
Level 10	168 m <sup>2</sup>
	18240 m <sup>2</sup>

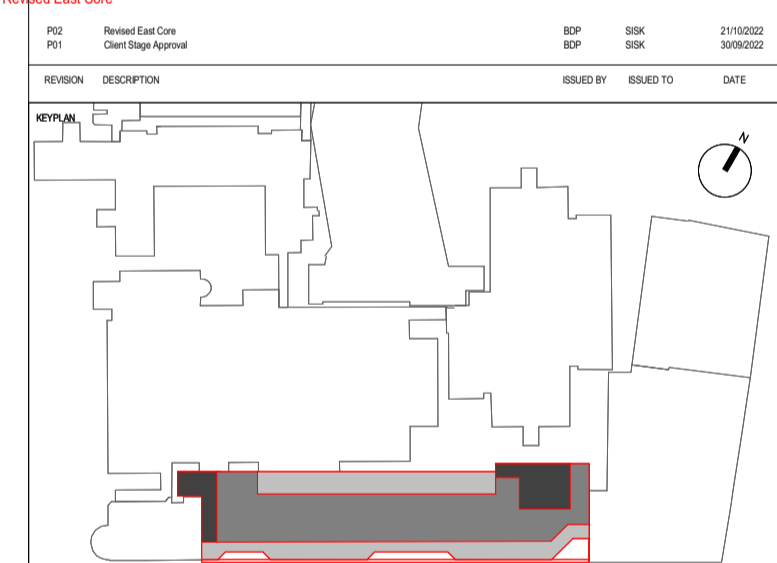
GEA by Level	
Level	Area
Level 0	2059 m <sup>2</sup>
Level 1	2253 m <sup>2</sup>
Level 2	2104 m <sup>2</sup>
Level 3	1899 m <sup>2</sup>
Level 4	1792 m <sup>2</sup>
Level 5	1961 m <sup>2</sup>
Level 6	1923 m <sup>2</sup>
Level 7	1957 m <sup>2</sup>
Level 8	2008 m <sup>2</sup>
Level 9	1679 m <sup>2</sup>
Level 10	241 m <sup>2</sup>
	19877 m <sup>2</sup>

BUILDING DESIGN PARTNERSHIP SHALL HAVE NO RESPONSIBILITY FOR ANY USE MADE OF THIS DOCUMENT OTHER THAN FOR THAT WHICH IT WAS PREPARED AND ISSUED.  
 ALL DIMENSIONS SHOULD BE CHECKED ON SITE.  
 DO NOT SCALE FROM THIS DRAWING.  
 ANY DRAWING ERRORS OR DIVERGENCES SHOULD BE BROUGHT TO THE ATTENTION OF BUILDING DESIGN PARTNERSHIP AT THE ADDRESS SHOWN BELOW.  
 DRAWINGS SHALL BE READ IN CONJUNCTION WITH THE FOLLOWING BEFORE WORK COMMENCES:  
 - THE CDM DESIGN ISSUES REGISTER  
 - THE BDP RISK SERIES OF DRAWINGS  
 - THE PROJECT CDM RISK REGISTER

NOTES

- Cafe
- CCU
- Circulation
- Complex Imaging
- Cytotoxic
- Data Centre
- Day Care
- Dispensary
- External Plant
- FM
- OP Dispensary
- Plant
- Potential Area Saving
- Potential Area Saving (Link)
- Public
- Retail
- Risers
- Roof Garden
- School
- Special Feeds
- Staff Change
- Theatres
- Ward Accommodation

--- GEA OUTLINES



CONTRACTOR <b>SISK CONTRACTORS</b> <small>Established 1958</small>	DESIGN/LEAD <b>BDP.</b>
John Sisk & Son Ltd 2410 Regents Court The Crescent Birmingham Business Park Birmingham B37 7YE	16 Brewhouse Yard Clerkenwell London EC1V 4LJ United Kingdom T +44 (0)20 7812 8000 www.bdp.com

GOSH Children's Cancer Centre		PROJECT NUMBER P2007598
Area Plans		
GOSHCCC-BDP-ZZ-ZZ-DR-A-0900-1200		
ISSUED FOR S3 - For Review & Comment	SCALE 1 : 500	DATE 21/10/2022
ISSUED BY ILR	APPROVED BY MB	REVISION P02