




# Oriel

## St Pancras Hospital and Local Network substation - relocation option analysis



PROJECT NAME		<b>Oriel</b>	
ORIGINATOR		 <b>BOUYGUES UK</b>	
TITLE			
<b>St Pancras Hospital and Local Network substation - relocation option analysis</b>			

STAGE(s) (RIBA/BSRIA):	<b>5</b>	SUITABILITY CODE:	<b>S3</b>
<b>ORL</b>	<b>BYG</b>	<b>EX</b>	<b>XX</b>
PROJECT	ORIGINATOR	FUNCTIONAL BREAKDOWN	SPATIAL BREAKDOWN
<b>TRP</b>	<b>J</b>	<b>000047</b>	<b>P01</b>
FORM	DISCIPLINE	SEQUENCE NUMBER	REVISION



# ORIEL

## St Pancras Hospital and Local Network substation - relocation option analysis



Reference document: ORL-BYG-MTH-000065-Oriol Moorfields Eye Hospital Substation Locations-Options\_P01

This document shows the option analysis for the relocation of both the UKPN hospital substation 24628 and local network substation 20340

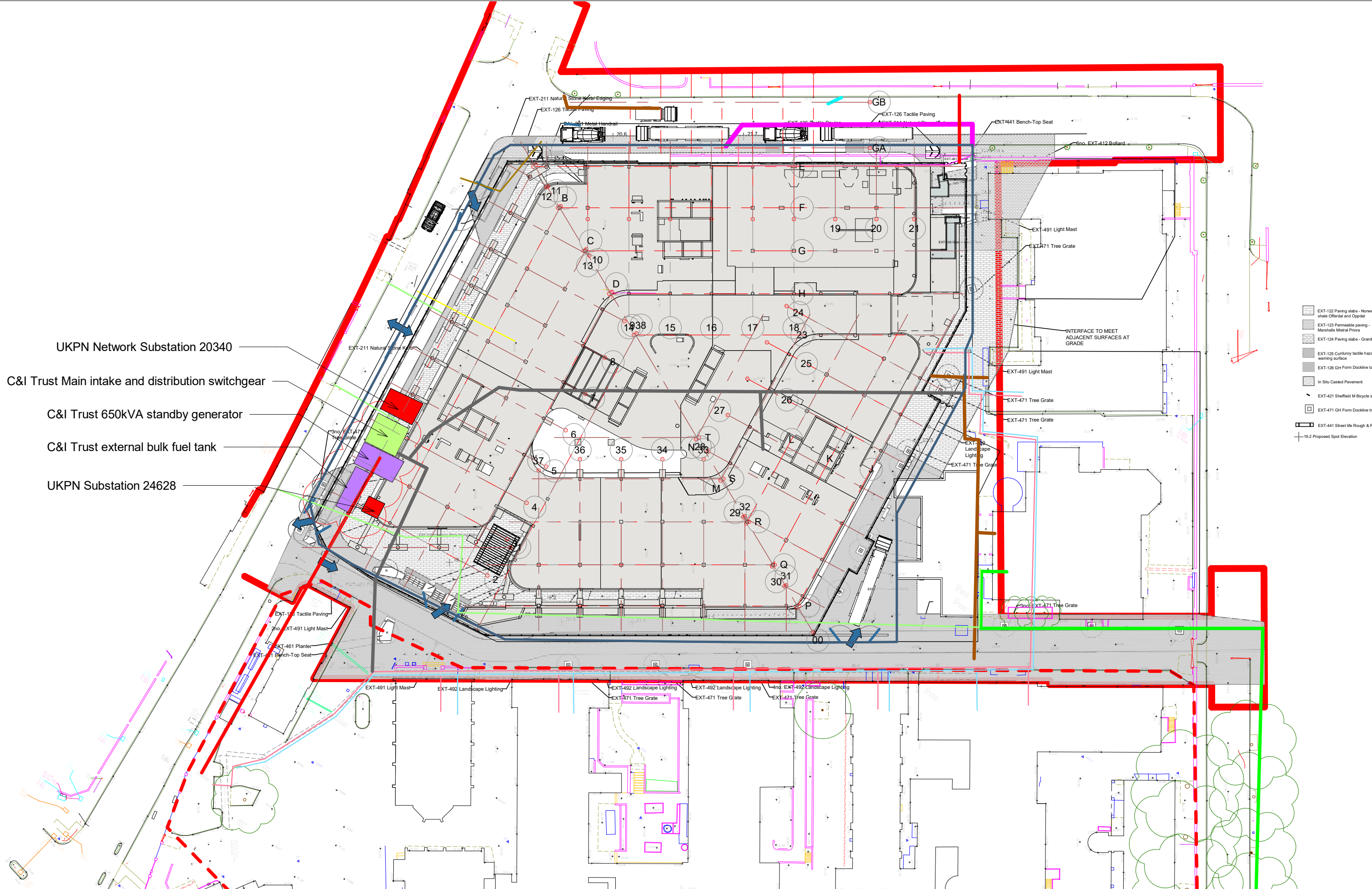
- Page 1 of the document shows that that both these substations are located within the footprint of the new ORIEL building and therefore must be temporary relocated within the St Pancras Hospital Site.

Please note that:

- the relocated UKPN hospital substation 24628 will continue feeding the retained estate on the St Pancras Hospital site – this substation will eventually be redundant upon completion of the KC(SPH)LP works
- The relocated UKPN local network substation 20340 will eventually be accommodated within the new ORIEL building upon completion of the new structure of the building (by end 2025)
- Page 2 of the document shows the initial proposed relocation to the South of the Gatehouse – this location however clashes with the proposed footprint of the Plot A1 part of the KC(SPH)LP development on the St Pancras Hospital site



- Page 3 of the document shows an alternative location to the west of the River Crisis Center. This location restricts :
  - Camden & Islington Trust end users access to the south wing – pedestrian and vehicular;
  - the construction access to KC(SPH)LP's Plot A1 .
- Page 4 of the document shows the preferred and retained proposed relocation for both substations as it does not affect the construction of the ORIEL nor the KC(SPH)LP development.



UKPN Network Substation 20340

C&I Trust Main intake and distribution switchgear

C&I Trust 650kVA standby generator

C&I Trust external bulk fuel tank

UKPN Substation 24628

- EXT-122 Paving slabs - Norwegian shale Offroad and Oppdal
- EXT-123 Permeable paving - Marshalls Mineral Proton
- EXT-124 Paving slabs - Granite
- EXT-125 Curbside tactile hazard warning surface
- EXT-126 GH Form Dockline tactile
- In Situ Casted Pavement
- EXT-421 Sheffield M Bicycle stand
- EXT-471 GH Form Dockline tree gr
- EXT-441 Street life Rough & Ready
- +19.2 Proposed Spot Elevation



**Drawing Reference** ORL-BYG-MTH-000065-Oriel Moorfields Eye Hospital Substation Locations - Options\_P01

**Project** ORIEL MOORFIELDS EYE HOSPITAL

**Drawing Title** Substation Locations - Options

**Phase** Existing Substation and Oriel Footprint

**Page** 01 / 04

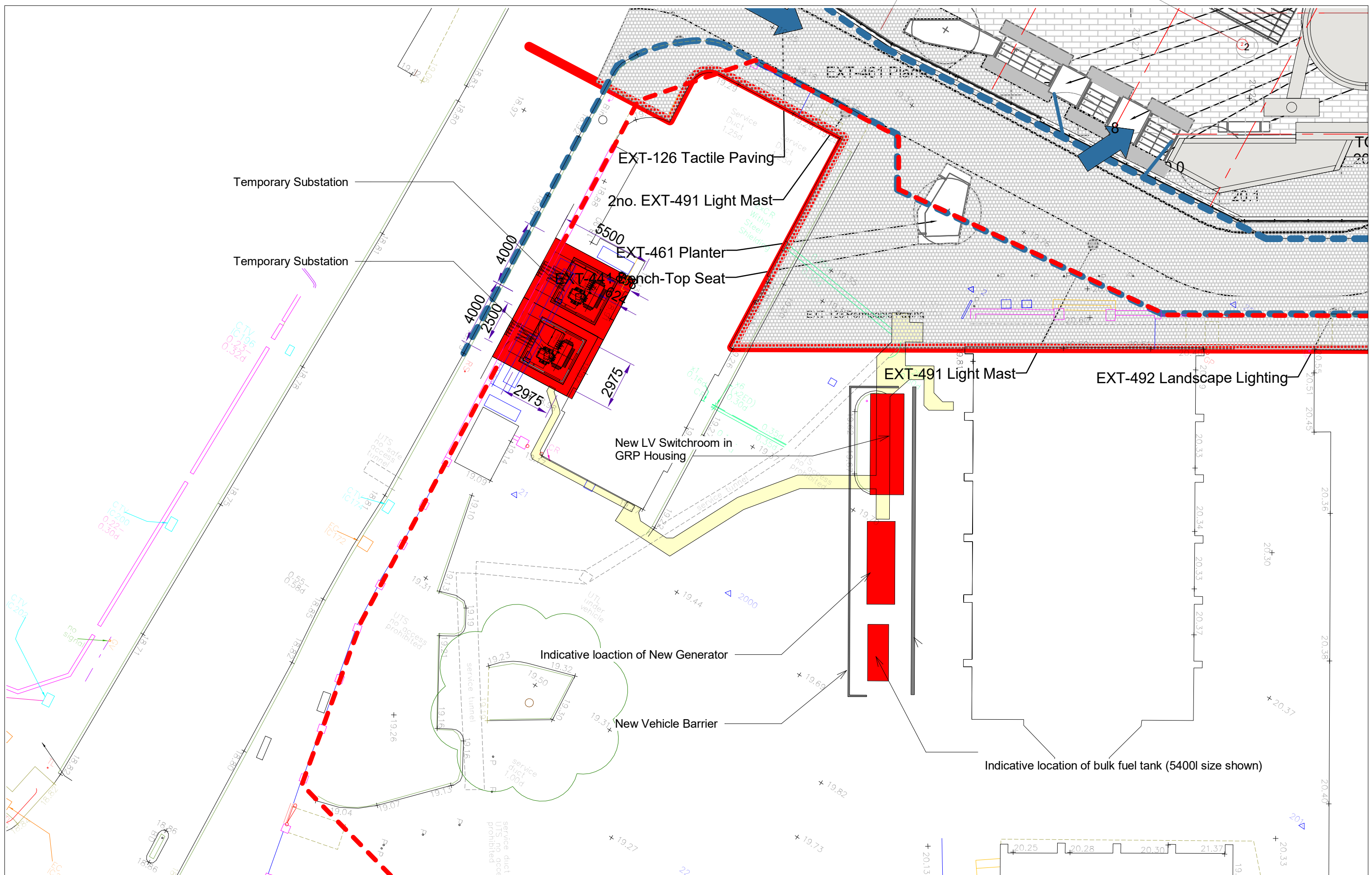
**Scale** 1 : 600 @ A3

**Date** 06/10/2022 14:27:21

In confidence: Not to be circulated to other bidders







**Drawing Reference** ORL-BYG-MTH-00065-Oriol Moorfields Eye Hospital Substation Locations - Options\_P01  
**Project** ORIEL MOORFIELDS EYE HOSPITAL  
**Drawing Title** Substation Locations - Options  
**Phase** Option 4 Preferred Relocation Option

**Page** 04 / 04  
**Scale** 1 : 200 @ A3  
**Date** 06/10/2022 14:27:23



In confidence: Not to be circulated to other bidders