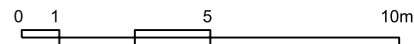
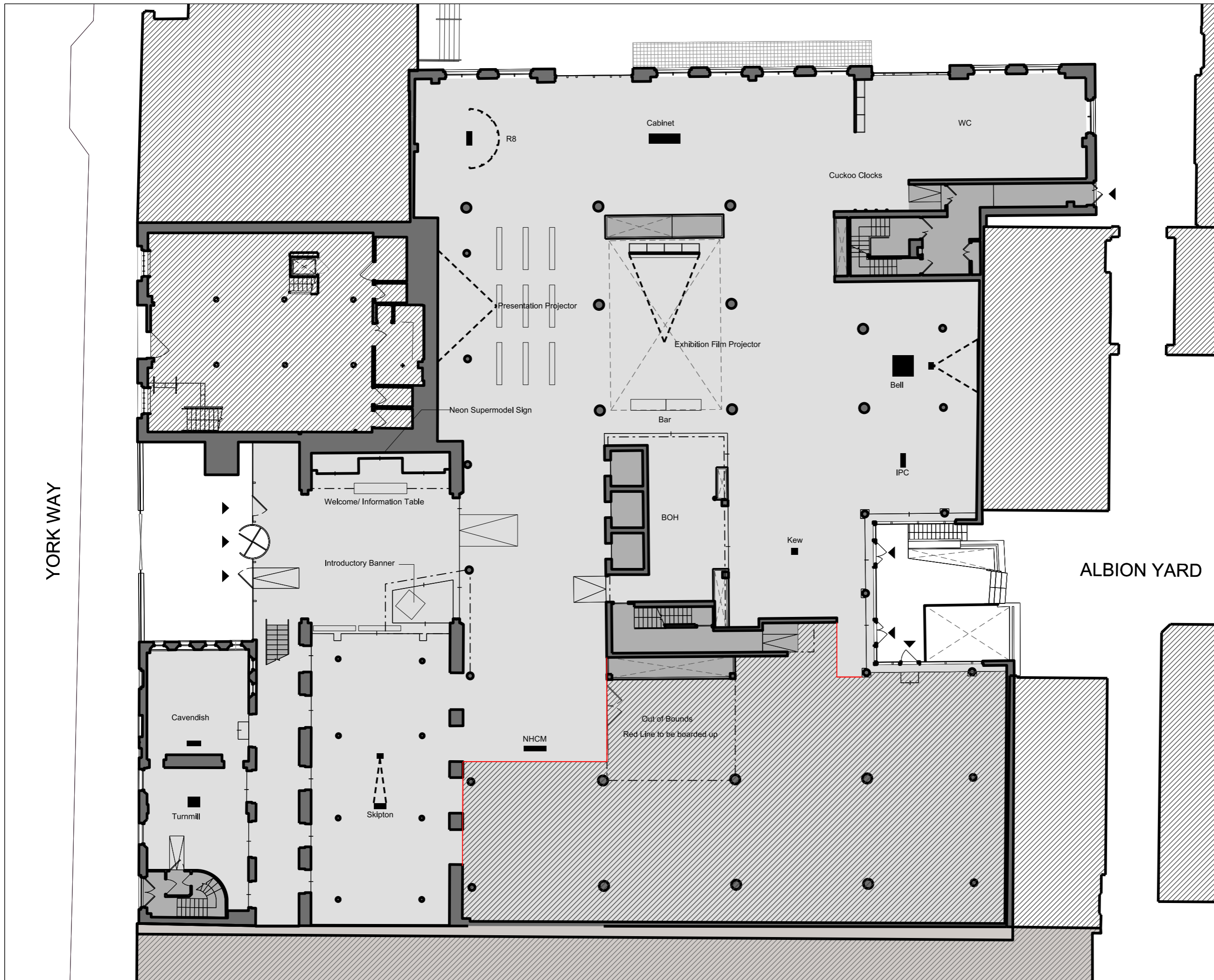


Notes

**Model Electrical Requirements:**

- Skipton - 2x power sockets  
- 1x model, 1x projector + 1x HDMI
- R8 - 2x power sockets  
- from dimmer box
- Bell - 2x power sockets  
- 1x model, 1x projector + 1x HDMI
- IPC - 1x power socket
- Cavendish - 1x power socket
- Kew - 1x power socket
- Turnmill - 2x power socket  
- 1x model, 1x projector + 1x HDMI
- NHCM - 2x power sockets



Project PCO Exhibition				
Client -				
Date 11.10.22		Scale 1:100 at A1 1:200 at A3		
Drawing Title Jahn Court Electrical Layout - Option 02				
Drawn JPR	Checked -	Approved -		
Drawing Status For Information				
Project 13568	Discipline A	View -	Drawing No -	Rev -

The Centro Building  
39 Plender Street  
London NW1 0DT

info@percycandco.com  
www.percycandco.com

Telephone  
+44(0)2074249611