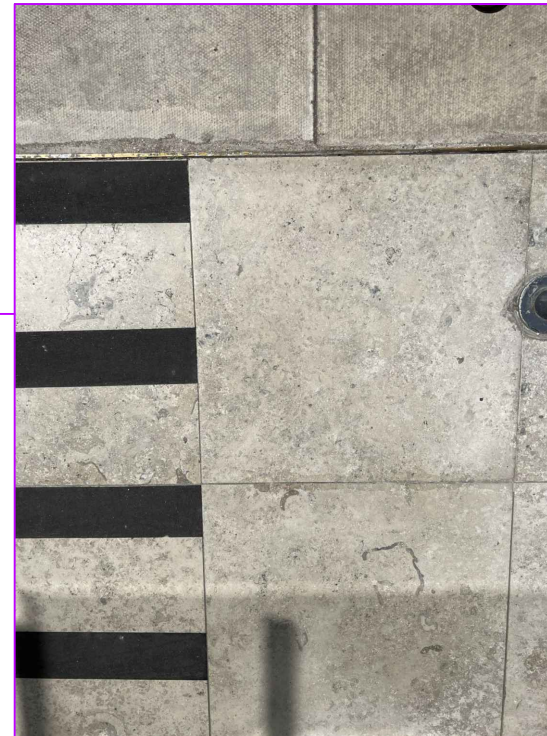




EXISTING 40 WHITFIELD STREET ENTRANCE TO BE MATCHED



New Aluminium door finish to match RAL 7024



NEW LIMESTONE PAVING WITH NON SLIP BLACK INSERTS TO MATCH

THIS DRAWING REMAINS THE PROPERTY OF **BASE INTERIORS LTD.** IT MAY NOT BE COPIED OR REPRODUCED WITHOUT EXPRESS WRITTEN CONSENT. FIGURED DIMENSIONS SHOULD BE USED WHERE GIVEN.

REV	DESCRIPTION	DATE

Estates & Agency

CLIENT  
 40 Whitfield Street  
 London W1T 2RH

SITE ADDRESS

Materials Palette

DRAWING TITLE		
EAA 516	E 003	1
PROJECT NO.	DRAWING NO	REV.
Scale	Materials	
AV	16.05.2022	
DRAWN	DATE	

T. 020 7487 3222  
 F. 020 7487 3555  
 BASEINTERIORS



15 BERKELEY MEWS LONDON W1H 7AX

# Materials Palette