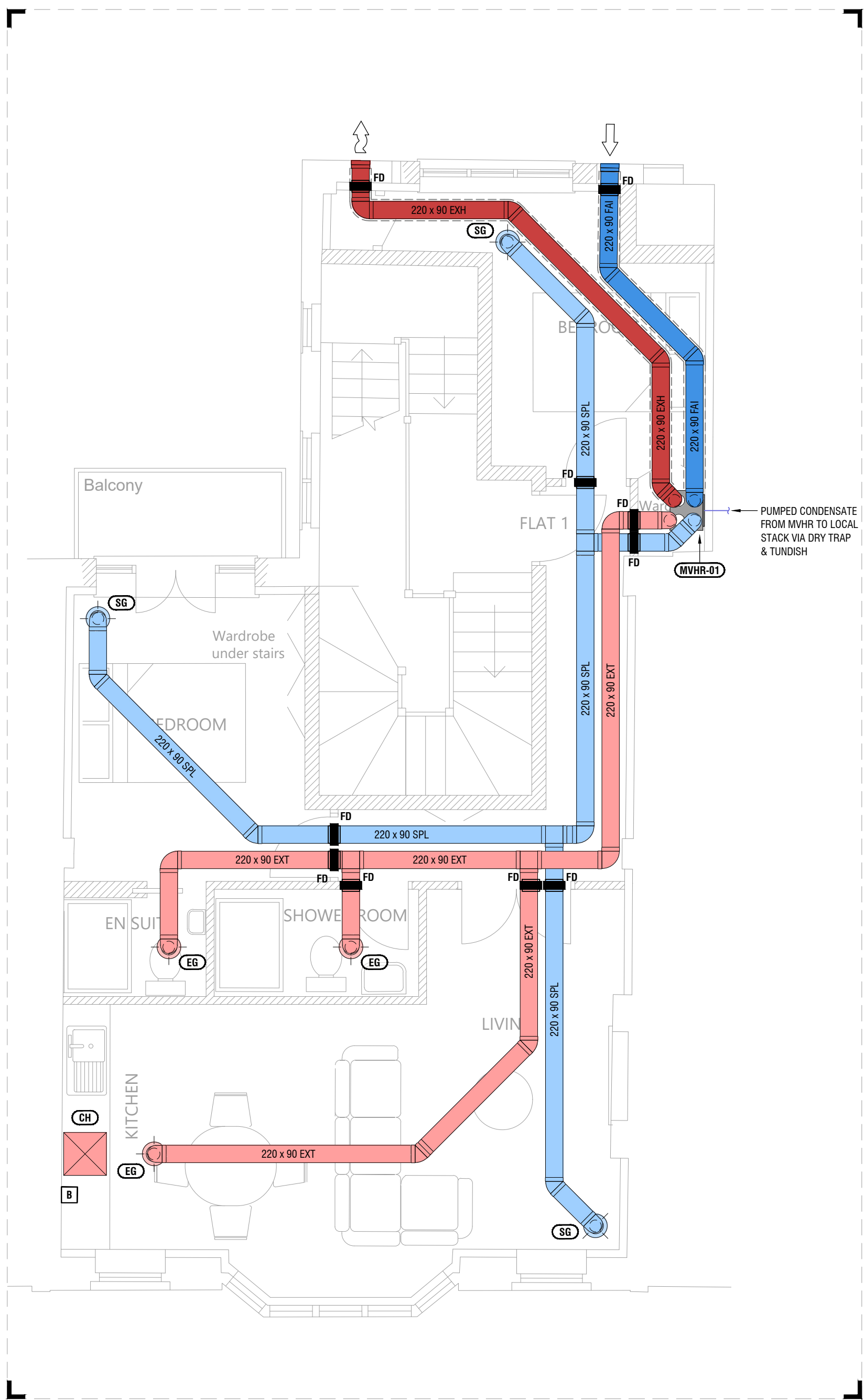
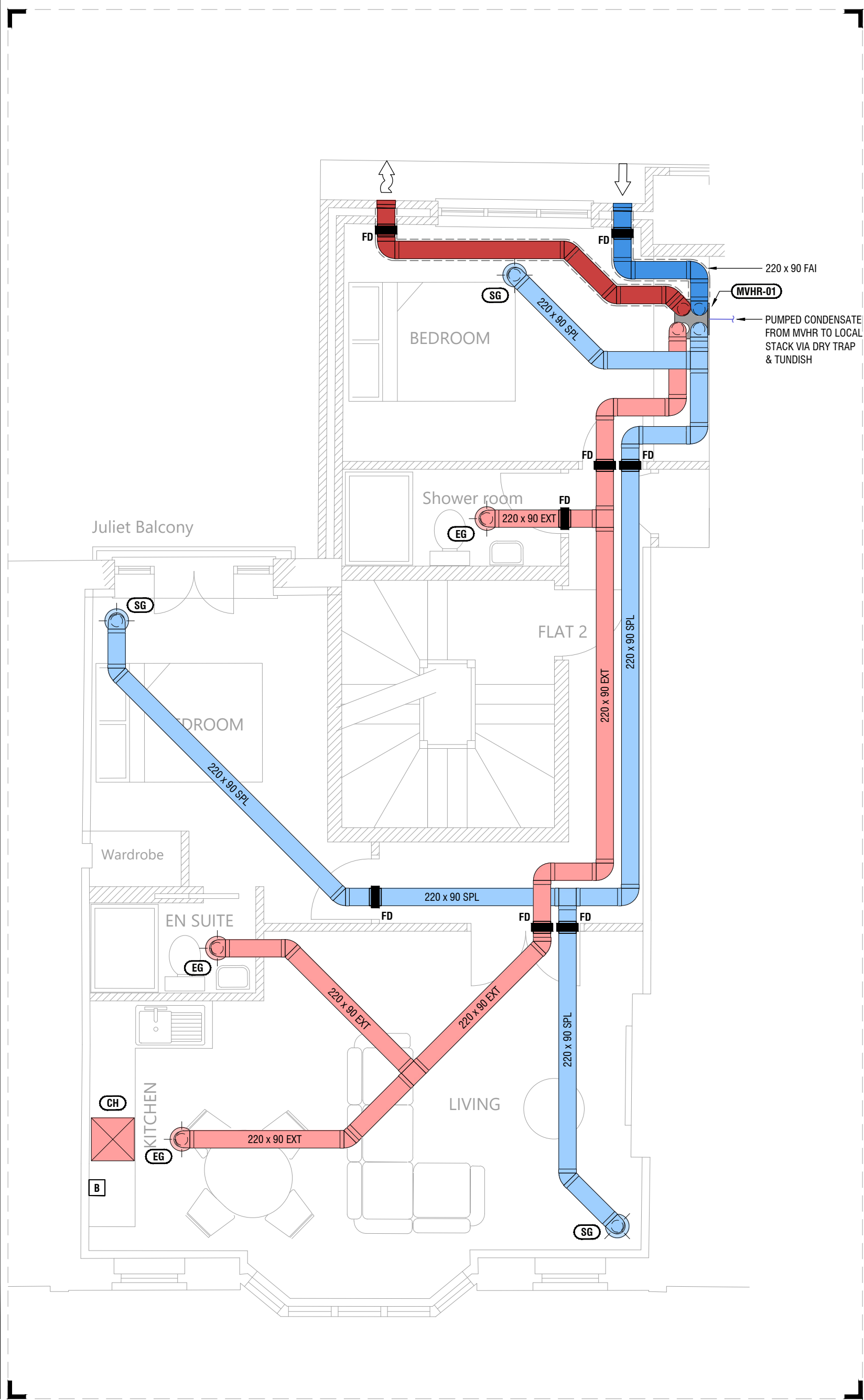


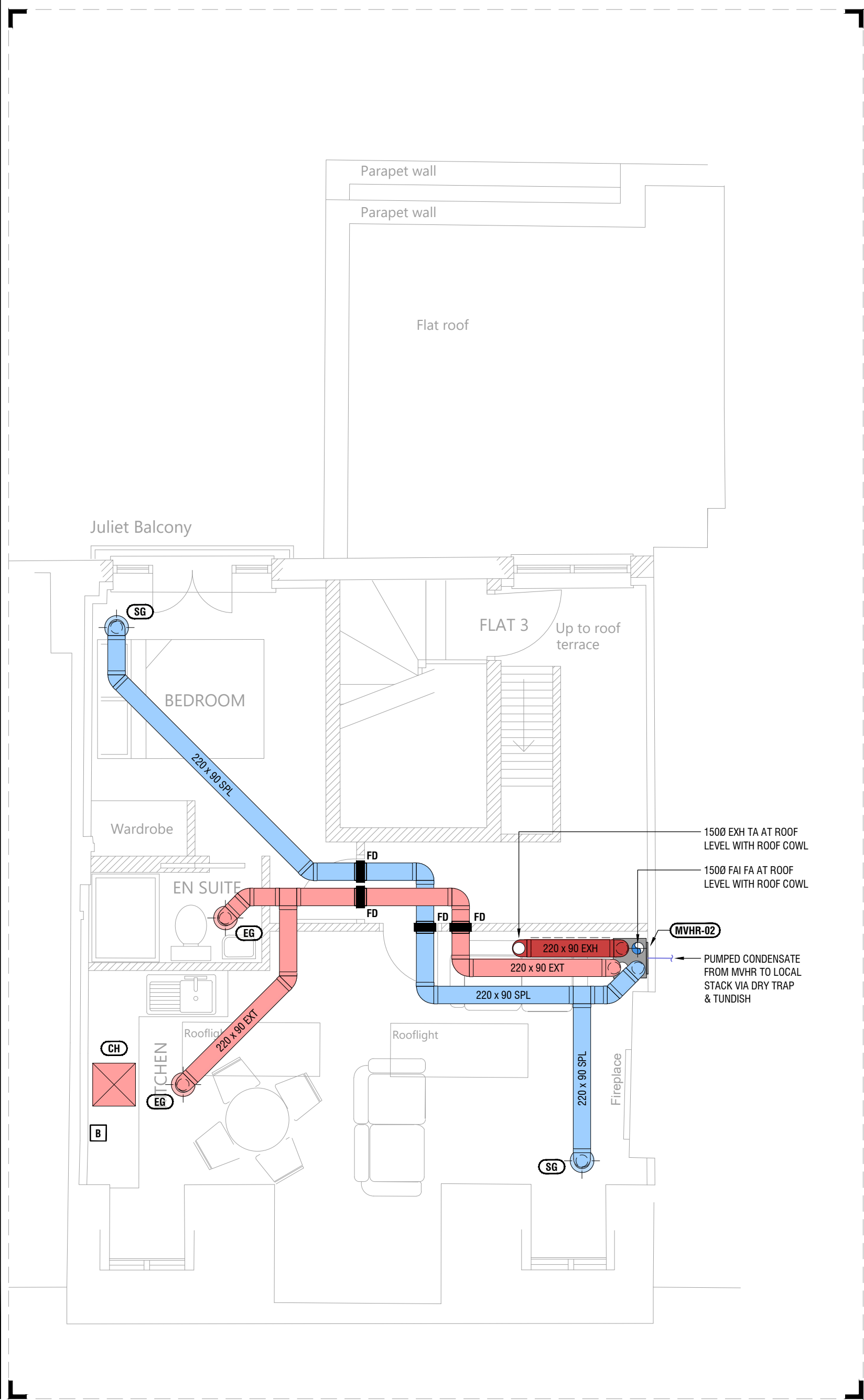
1ST FLOOR  
SCALE: 1:50



2ND FLOOR  
SCALE: 1:50



3RD FLOOR  
SCALE: 1:50



DRAWING NOTES

- THIS DRAWING SHALL BE READ IN CONJUNCTION WITH ALL PROJECT RELEVANT QUINROSS INFORMATION, THE CONTRACT SPECIFICATION, ALL ARCHITECTS & CONSULTANTS LATEST INFORMATION & ALL RELEVANT THIRD PARTY INFORMATION.
- ALL DIMENSIONS ARE IN MILLIMETRES (mm) UNLESS OTHERWISE STATED.

VENTILATION NOTES

- WHERE DUCT WORK PASSES THROUGH A FIRE COMPARTMENT IT SHALL BE SUITABLY FIRE STOPPED.
- SYSTEM SHALL BE DESIGNED & INSTALLED TO A.D. PART F.
- USE OF FLEXIBLE DUCTWORK SHALL BE KEPT TO A MINIMUM. WHERE USED IT SHALL BE PULLED TO 90% OF ITS LENGTH.
- FAI & EXH DUCTWORK SHALL BE INSULATED.
- DUCTWORK TERMINATING AT ROOF LEVEL SHALL TERMINATE WITH A SUITABLE COWL, TO BE AGREED WITH THE ARCHITECT.
- KITCHENS ARE TO BE PROVIDED WITH A RE-CIRCULATING COOKER HOOD TO COOKER HOOD TO BE INSTALLED TO MANUFACTURERS REQUIREMENTS.
- ALL FANS TO BE INSTALLED ON ANTI-VIBRATION MOUNTS.
- FOR ACOUSTIC REQUIREMENTS PLEASE REFER TO SPECIALISTS REPORT.

EQUIPMENT LEGEND

- NUAIRE MRXBOXAB-EC02  
MIN 25 L/S (BACKGROUND)  
29 L/S @ 50Pa (BOOST)  
SFP (W/Ls) 0.5 (BOOST) 0.5 (BACKGROUND)
- MVHR-01
- NUAIRE MRXBOXAB-EC02  
MIN 19 L/S (BACKGROUND)  
21 L/S @ 50Pa (BOOST)  
SFP (W/Ls) 0.4 (BOOST) 0.4 (BACKGROUND)
- MVHR-02
- CH RE-CIRCULATING COOKER HOOD
- B VENTILATION BOOST SWITCH

VENTILATION LEGEND

- EXHAUST DUCTWORK (EXH)
- EXTRACT DUCTWORK (EXT)
- FRESH AIR DUCTWORK (FAI)
- SUPPLY DUCTWORK (SPL)
- CONDENSATE PIPEWORK
- INSULATION

VENTILATION ABBREVIATIONS

- AHU AIR HANDLING UNIT  
ATT ATTENUATOR  
DTG DOOR TRANSFER GRILLE  
FCU FAN COIL UNIT  
FIO FLAT OVAL  
EF EXTRACT FAN  
EG EXTRACT GRILLE  
EXH EXHAUST AIR  
EXT EXTRACT AIR  
FAI FRESH AIR INTAKE  
FC FIRE COLLAR  
FD FIRE DAMPER  
MVHR MECHANICAL VENTILATION HEAT RECOVERY  
RA RETURN AIR  
RAG RETURN AIR GRILLE  
SG SUPPLY GRILLE  
SPL SUPPLY AIR  
VAV VARIABLE AIR VOLUME  
VCD VOLUME CONTROL DAMPER

GENERAL ABBREVIATIONS

- AP ACCESS PANEL  
CW COMPLETE WITH  
CV CEILING VOID  
FA / FB FROM ABOVE / FROM BELOW  
FFL FINISHED FLOOR LEVEL  
LL / HL / ML LOW LEVEL / HIGH LEVEL / MID LEVEL  
SD / SU SET DOWN / SET UP  
TA / TB TO ABOVE / TO BELOW

NOTE:

ALL LOUVER/AIR BRICK TERMINALS TO BE METAL CONSTRUCTION

NOTE:

ALL DUCTWORK TO BE 220 x 90

NOTE:

ALL AIR VALVES TO BE 2000 AS GILBERTS GX-200 & SX-200 WHITE STOVE ENAMEL

NOTE:

MVHR IN BOOST MODE VIA BATHROOM LIGHT SWITCHES & MANUAL SWITCHES IN KITCHENS

THIS DRAWING MUST BE  
PRINTED IN COLOUR

FOR COMMENT

CLIENT

PROJECT

TITLE

1ST TO 3RD FLOOR  
MECHANICAL SERVICES  
VENTILATION LAYOUTS

P1	13.09.22	ISSUED FOR COMMENT	HW	DC
REV	DATE	DESCRIPTION	DRN	CHK
© THIS DRAWING IS THE PROPERTY OF QUINROSS CONSULTANTS LTD. & IS ISSUED IN CONFIDENCE. IT MUST NOT BE COPIED OR DISCLOSED TO THIRD PARTIES WITHOUT WRITTEN PERMISSION OF THE COMPANY.				

QuinnRoss  
CONSULTANTS LTD

KENT | MED BNY  
LONDON | N1 9JU  
T: 01783 841035  
W: www.quinnross.com  
E: admin@quinnross.com

SCALE: 1:50  
SIZE: A1  
PLOTTED: HWELLS

DRAWING No. P2414-(M3)-4-101  
REV: P1