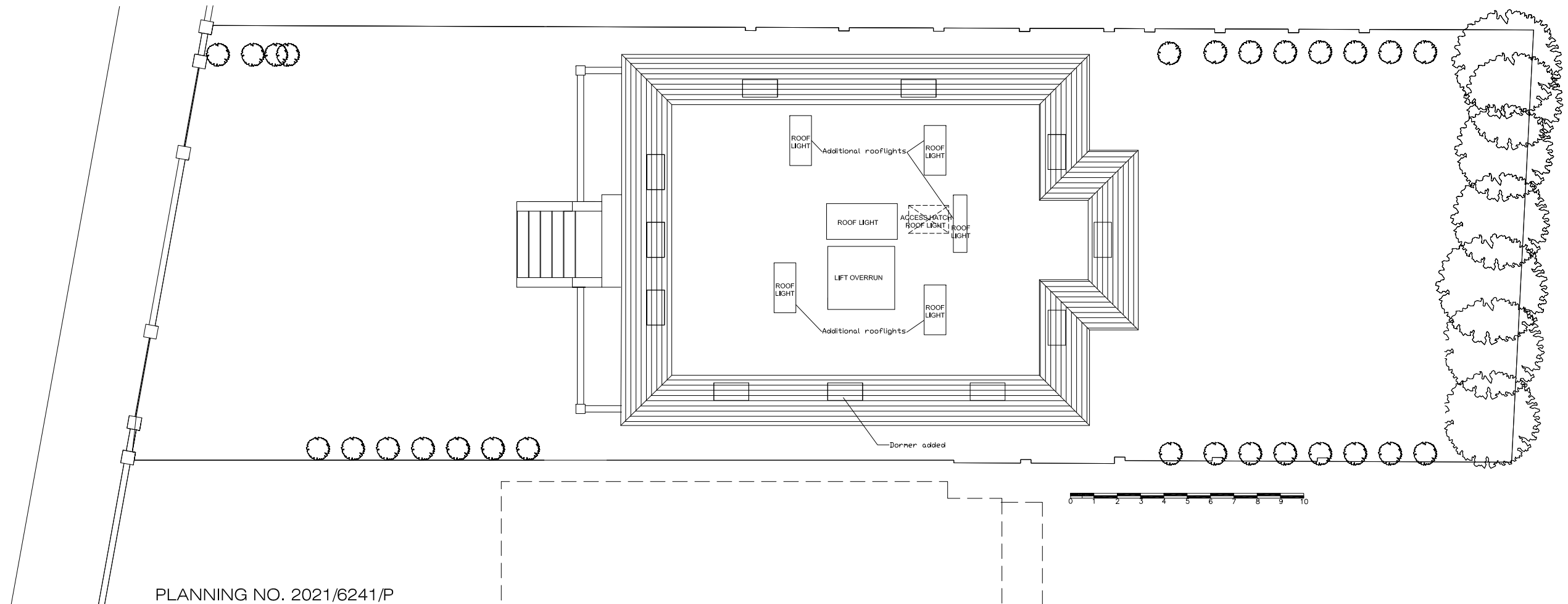
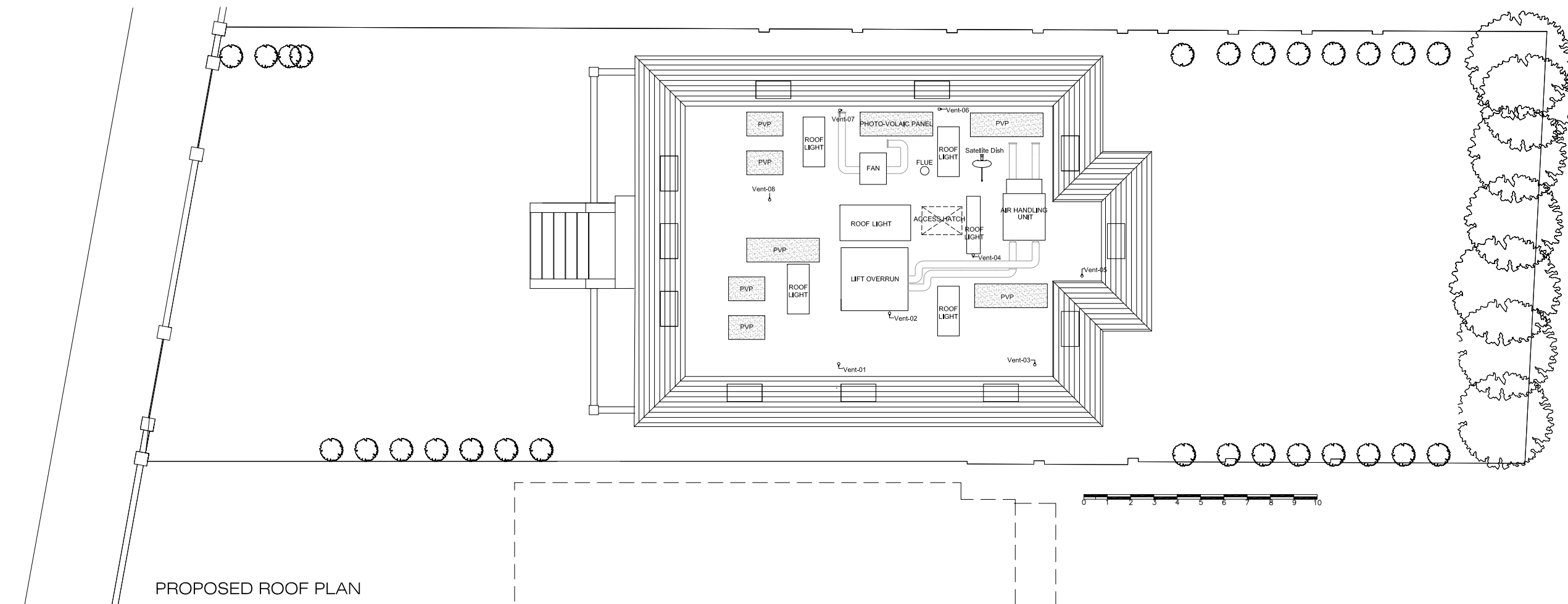


General notes:
 This drawing is copyright of KSR architects. This drawing must be read in conjunction with the Designer's Risk Assessment, specification and all other relevant documentation and drawings. KSR architects accept no liability for any expense, loss or damage of whatsoever nature and however arising from any variation made to this drawing or in the execution of the work to which it relates which has not been referred to them and their approval obtained.
 Do not scale from this drawing or the digital data, only figured dimensions are to be used. For Planning refer to linear scale.
 Check all dimensions on site prior to carrying out any works – advise any discrepancy



PLANNING NO. 2021/6241/P



PROPOSED ROOF PLAN

A	PLANNING AMENDMENT	07.10.22	By	Chd
-	PLANNING APPLICATION	09.06.22	By	Chd
Rev	Notes	05.06.22	By	Chd

© KSR architects

KSR ARCHITECTS & INTERIOR DESIGNERS
 KSR Architects LLP
 14 Gower Street
 London WC1E 6BT
 info@ksrarchitects.com
 t: +44 (0)20 7862 8000
 www.ksrarchitects.com

Project:
 62 Avenue Road
 NW8 6HT

Title:
 Roof Plan

Date:	Drawn By:	Checked:
Scale: 1:100 @ A1	-	1:200 @ A3
Project Ref: 19021	Drawing No: EZR-050	Revision: A