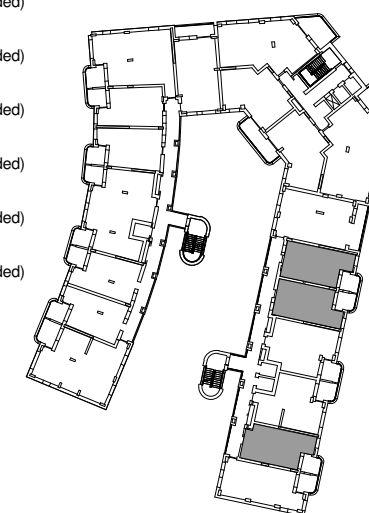


Plot Numbers:

- A05
- A08 (handed)
- A09
- A12
- A15 (handed)
- A16
- A19
- A22 (handed)
- A23
- A26
- A29 (handed)
- A30
- A33
- A36 (handed)
- A37
- A39
- A42 (handed)
- A43

Key Plan:
Unit locations denoted in grey



Job Title
Belmont Street, Camden

Drawing Title
Apartment Type A (1B/1P)

Scale
1:50 @ A3



Drawn Checked Date
DB DU 29/09/22

Project Originator Volume Level Type Role Drawing No Rev
LD504 - ECE - ZZ - ZZ - PL - A - 1120.P01

Status
NMA Application

P01 30.09.22 NMA Application DB DU

Rev Date Revision Details Dr Ch

London: 76 Great Suffolk Street
London, SE1 0BL
T 020 7928 2773 E london@ecearchitecture.com
Sussex: Brooklyn Chambers, 11 Goring Road,
Worthing, West Sussex, BN1 2 4AP
T 01903 248777 E sussex@ecearchitecture.com
Bristol: Westworks, Beacon Tower,
Colston Street, Bristol, BS1 4XE
T: 0117 214 1101 E bristol@ecewestworks.com
ECE Architecture
www.ecearchitecture.com