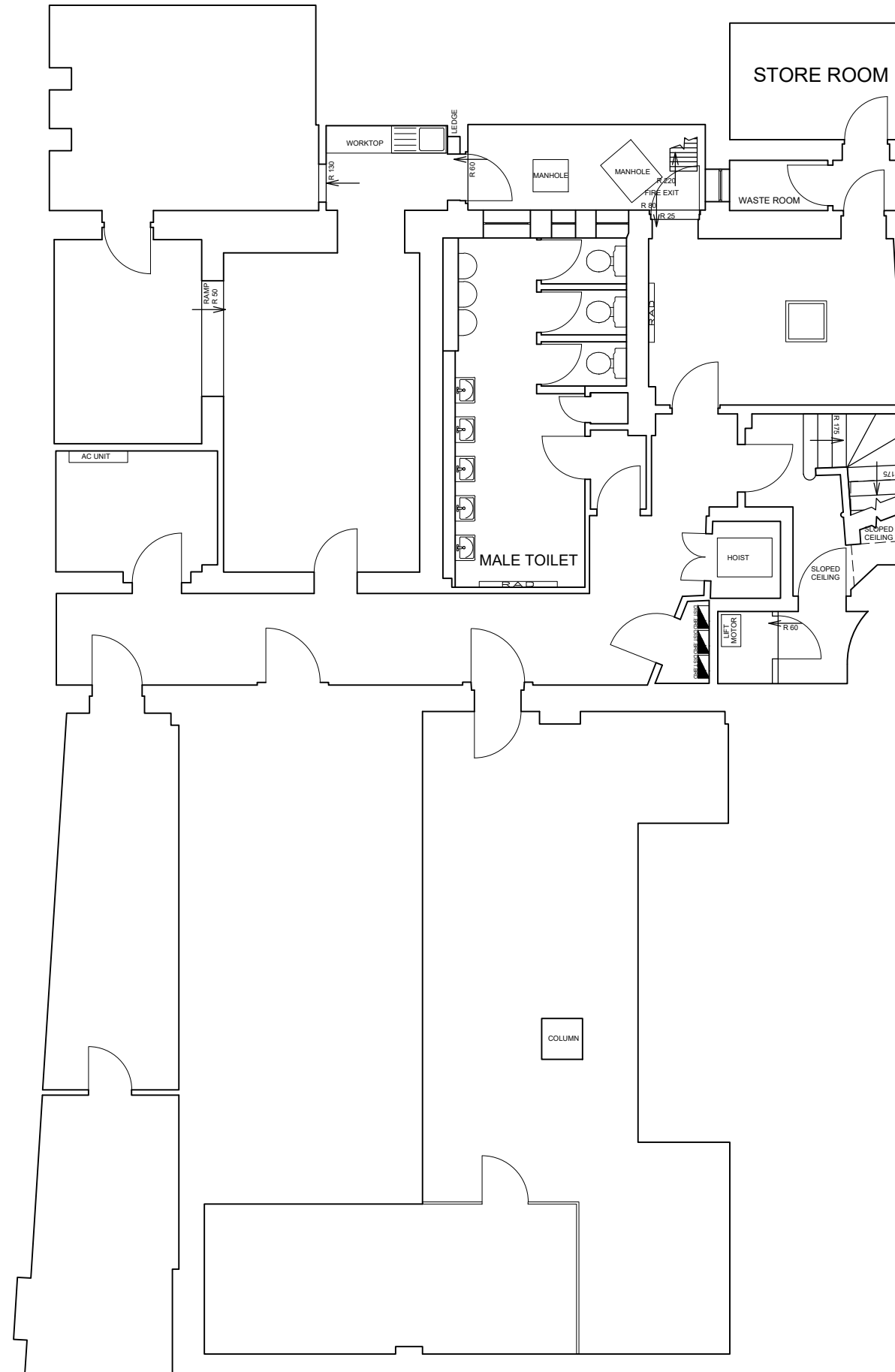




Architecture

Lewis & Hickey Ltd
1 St. Bernard's Row
Edinburgh, EH4 1HW
0131 343 6222
edinburgh@lewis-hickey.com

Edinburgh | Guildford | London | Manchester | Nottingham



rev	date	description	drawn	checked



address
NW BLOOMSBURY PARR'S
214 HIGH HOLBORN
LONDON
WC1V 7BF

ref no. - sortcode -

description
**BASEMENT PLAN
PROPOSED LAYOUT**

status
-

IPMS1	-	sqm	-
IPMS2	-	sqm	-
IPMS3	-	sqm	-

scale	1:100	paper size	A3	brand	
drn	KL	date	23/09/22	chk	MD
		date	11/10/22		

nw drawing number
E7284-GA-BA PUBLIC

rev.
-

