

SITE SPECIFIC SCOPE - MEZZANINE FLOOR

REFER TO THE EXTERNAL ELEVATION DRAWINGS FOR SITE SPECIFIC SCOPE

THROUGHOUT THE MEZZANINE FLOOR, CAREFULLY REMOVE NON-ORIGINAL INTERNAL SIGNAGE, FIXTURES, FITTINGS, FURNITURE AND EQUIPMENT RELATING TO THE OPERATION OF THIS RETAIL BANK, AS SHOWN ON PLAN BY RED DASHED LINES.

NO WORKS TO REDECORATE ARE PROPOSED

This drawing is the copyright and property of NatWest Group plc. It must not be copied or published without written consent. Only scale from this drawing for planning consent purposes.







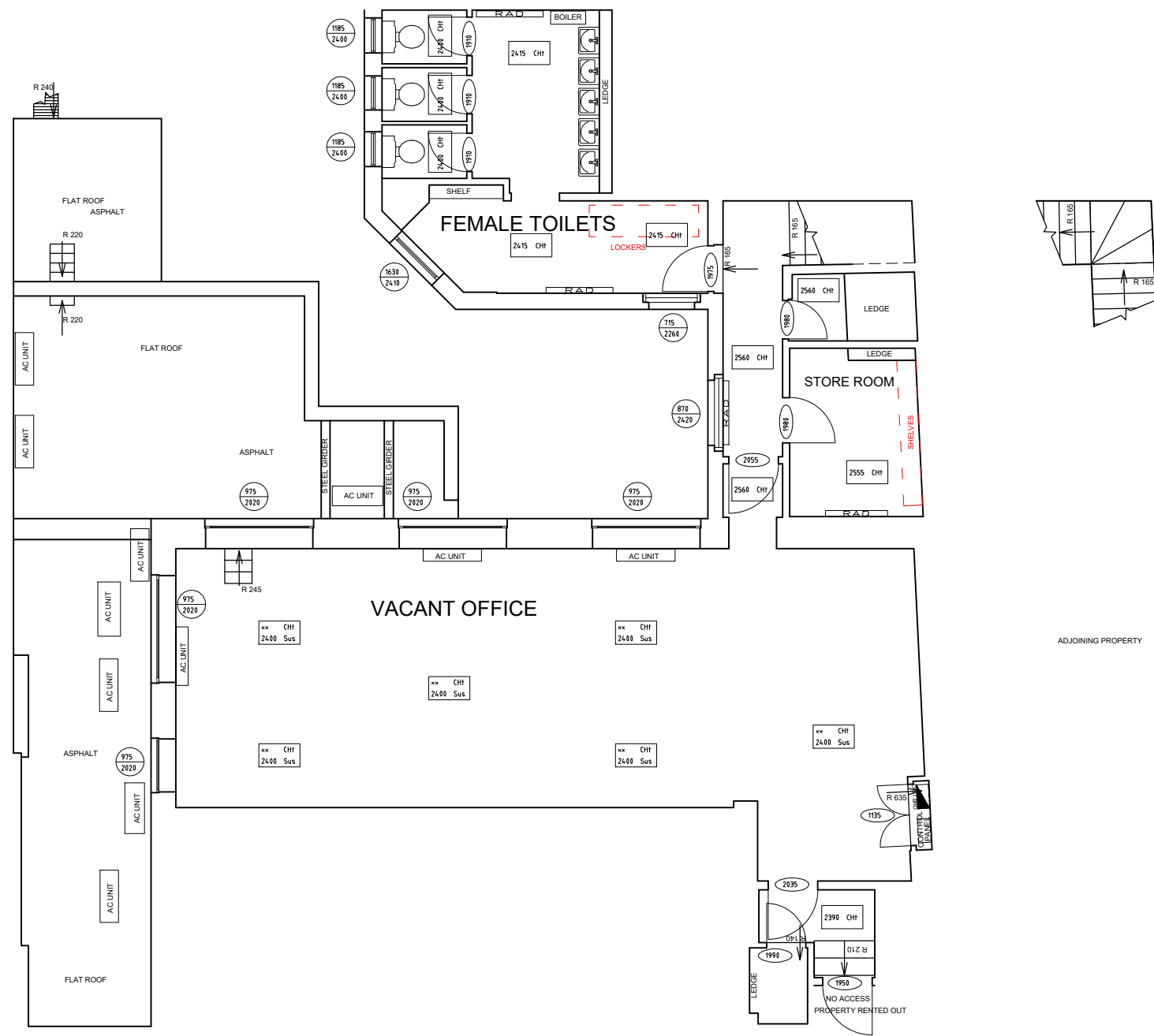
Architecture

Lewis & Hickey Ltd
1 St. Bernard's Row
Edinburgh, EH4 1HW
0131 343 6222
edinburgh@lewishickey.com

Edinburgh | Guildford | London | Manchester | Nottingham

KEY

-  NO WORKS
-  REMOVALS
-  DOWNTAKINGS / REMOVALS
-  REINSTATEMENTS



ADJOINING PROPERTY

ADJOINING PROPERTY

| rev | date | description | drawn | checked |
|-----|------|-------------|-------|---------|
| | | | | |




address
NW BLOOMSBURY PARR'S
214 HIGH HOLBORN
LONDON
WC1V 7BF

ref no. - sortcode -

description
MEZZANINE FLOOR PLAN
EXISTING LAYOUT
CLOSURE

status
-

| | | | |
|-------|---|-----|---|
| IPMS1 | - | sqm | - |
| IPMS2 | - | sqm | - |
| IPMS3 | - | sqm | - |

| | | | | | |
|-------|-------|------------|----------|-------|---|
| scale | 1:100 | paper size | A3 | brand |  |
| drn | KL | date | 23/09/22 | chk | MD |
| | | date | 11/10/22 | | |

| | | | |
|-------------------|-------------|------|---|
| nw drawing number | E7284-EX-MZ | rev. | - |
|-------------------|-------------|------|---|

