



Ajuga reptans



Epimedium x youngianum 'Niveum'



Geranium



Geranium cinereum 'Ballerina'



Hebe 'Carl Teschner'



Verbena 'Lollipop'



Vinca minor 'Bowles variety'



Lavandula 'Hidcote'



Rosmarinus prostratus



Hylotelephium 'Matrona'



Luzula nivea



Pinus mugo



Pittosporum 'Golf Ball'



Penstemon 'Sour Grapes'



Polystichum setiferum 'Densum'

## Plant Specification

### Shrubs

Number	Species	Density	Pot Size
5	Hebe 'Carl Teschner'	Counted	10L
4	Pittosporum tenuifolium 'Golf Ball'	Counted	10L
6	Rosmarinus officinalis 'Prostratus'	Counted	5-7.5L
6	Sarcococca hookeriana 'Winter Gem'	Counted	5-7.5L
8	Vinca minor 'Bowles' Variety	Counted	3L

### Herbaceous

Number	Species	Density	Pot Size
27	Gaura lindheimeri	Counted	3L
6	Geranium cinereum 'Ballerina'	Counted	3L
6	Geranium macrorrhizum 'Bevan's Variety'	Counted	3L
6	Hylotelephium 'Matrona'	Counted	3L
6	Penstemon 'Sour Grapes'	Counted	3L
8	Verbena 'Lollipop'	Counted	3L

### Climbers

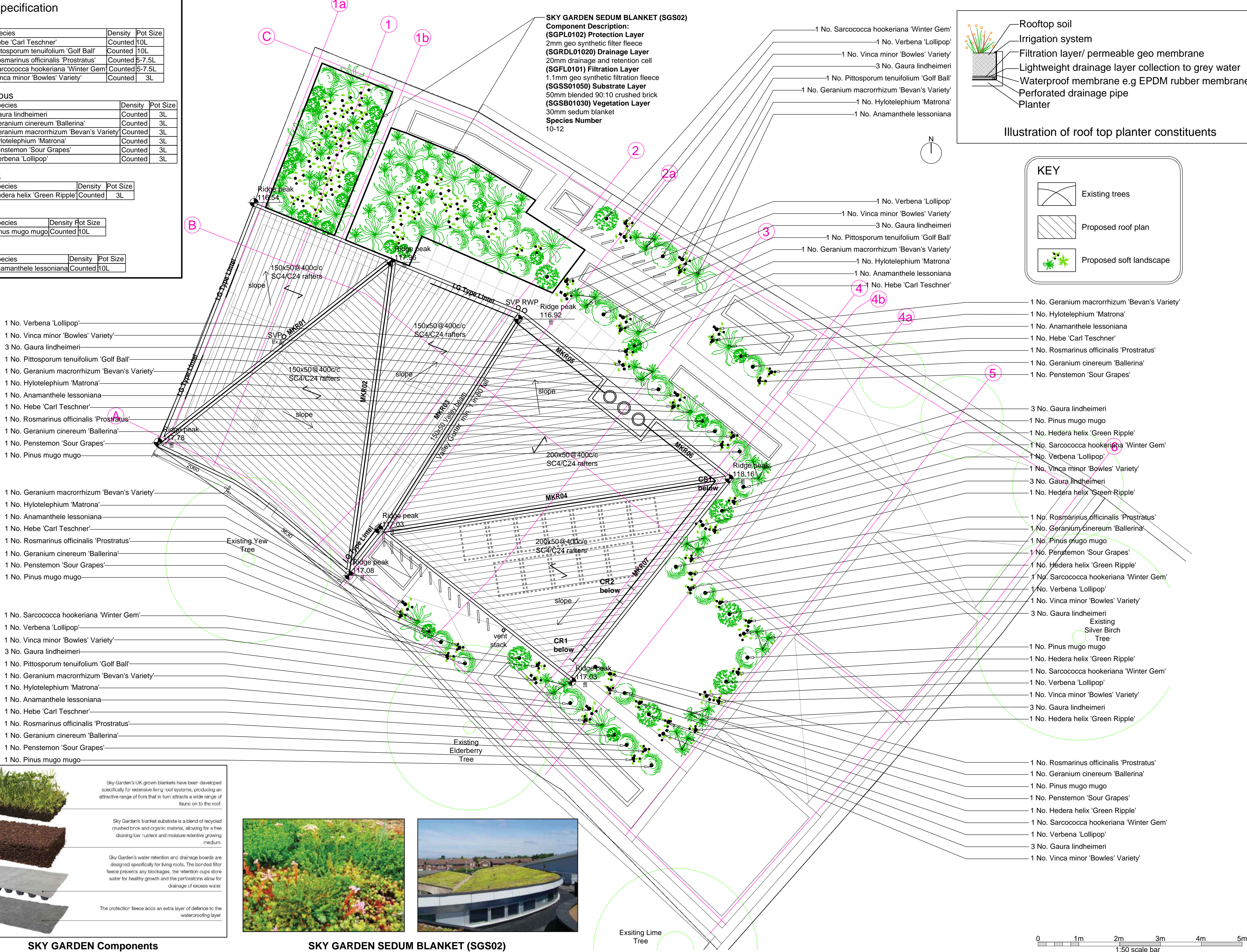
Number	Species	Density	Pot Size
6	Hedera helix 'Green Ripple'	Counted	3L

### Conifers

Number	Species	Density	Pot Size
7	Pinus mugo mugo	Counted	10L

### Grasses

Number	Species	Density	Pot Size
6	Anamanthe lessoniana	Counted	10L



SKY GARDEN Components

SKY GARDEN SEDUM BLANKET (SGS02)

## NOTES

### Design Rationale

The landscaping for the proposed building has been designed in line with the National Planning Policy Framework 2018 Parts and policies of The Core Strategy 2011: SP11 Open spaces and wildlife; SP12 Design and conservation; SP13 High environmental standards, and Saved Policies of The Southwark Plan 2007: Policy 3.2 Protection of amenity; Policy 3.12 Quality in Design; Policy 3.13 Urban Design and Policy 3.28 Biodiversity, in particular ensuring that the design is sympathetic to the borough's suburban character, incorporating shrubs, trees and perennials. The landscaping style is integral to the overall design of the property. The shrubs and plants for the proposed planters have been selected to cope with the north facing and roof aspects and aim to soften the building, increase biodiversity and create amenity value.

The community garden aims to provide a green refuge in a shady garden with wildflowers instead of grass, native plants, mixed native hedging and a rowan. The inclusion of plants from the RHS list of good pollinators will ensure a net gain in bio-diversity in line with policy 3.28 Biodiversity: "...will encourage the inclusion in developments of features which enhance biodiversity..." and SP12 Open spaces and Wildlife. Planters for growing of vegetables have been proposed (in line with Policy SP12 'we are looking at ways to encourage local food growing...') one built at a height to allow inclusion of the disabled. The path proposed is in compacted Breerton to ensure accessibility and space allowed at the end of the bench for inclusivity in line with Policy 3.12 Quality in design'...including the specific needs of disabled people or mobility impaired.' The single species hedging in the form of a very narrow native ivy screen and the hornbeam hedge reference the suburban location and contributes to the street scene, the former enabling generous seating in a narrow setting, thus maximising the amenity of an awkward narrow shaped space in line with policy 3.12 'design specific to the site's shape, size and location...', and Policy 3.12: Urban Design 'landscape design that enhances the area and biodiversity.' The garden provides a safe enclosed outdoor space for residents and children to enjoy whilst also providing new habitats to increase bio- diversity in line with Policy SP12.

Additional green infrastructure in the form of the planted roof, the frontage and the incorporation of climbers, proposed trees, shrubs, grasses and perennials from the RHS list of good pollinators included in the proposals for the roof garden planters, aims to comply with Policy 3.12 Urban Design 'that enhances the area and biodiversity.' It also provides a green corridor linking the community garden and the proposed building to the street in line with Policy SP11 Open spaces and wildlife 'improving the overall greenness of places, including promoting green corridors, gardens and local food growing'. The planting style aims to complement the proposed building and also the character of Streatley Place in line with Strategic Policy 12 Design and Conservation.

Rev.	Amendments	Date	Chkd.
------	------------	------	-------

Client  
STREATLEY PLACE (HAMPSTEAD) LIMITED

**S T S Structural Engineering Ltd**  
58 Crossway, Welwyn Garden City, Hertfordshire, AL8 7EE  
Tel: 01707 695466 Fax: 01707 692006  
Web: www.sts-ec.co.uk Email: sta@sts-ec.co.uk

Project  
6 Streatley Place,  
London NW3 1HP

Title  
Soft Landscape Plan - Roof Plan

Drawn	ND	Date	Aug 22	Scale
Checked	MN	Date	Aug 22	1:50
Approved	SS	Date	Aug 22	Size A1

Drawing No.	Rev.
20101-1326-F01	-