



ASTECO INDUSTRIA s.r.l.
STEEL KIOSKS AND MODULAR BUILDINGS

ATTICO SOA
Azienda certificata
SOA 0518 classe IV
e UNI EN ISO 9001:2008



Viale della Siderurgia n°18 - CERQUETO DI SANTA PALOMBA 00040 POMEZIA (ROMA)

DESIGNED BY
R.M.
DATE
14/10/22

DRAWING TITLE:

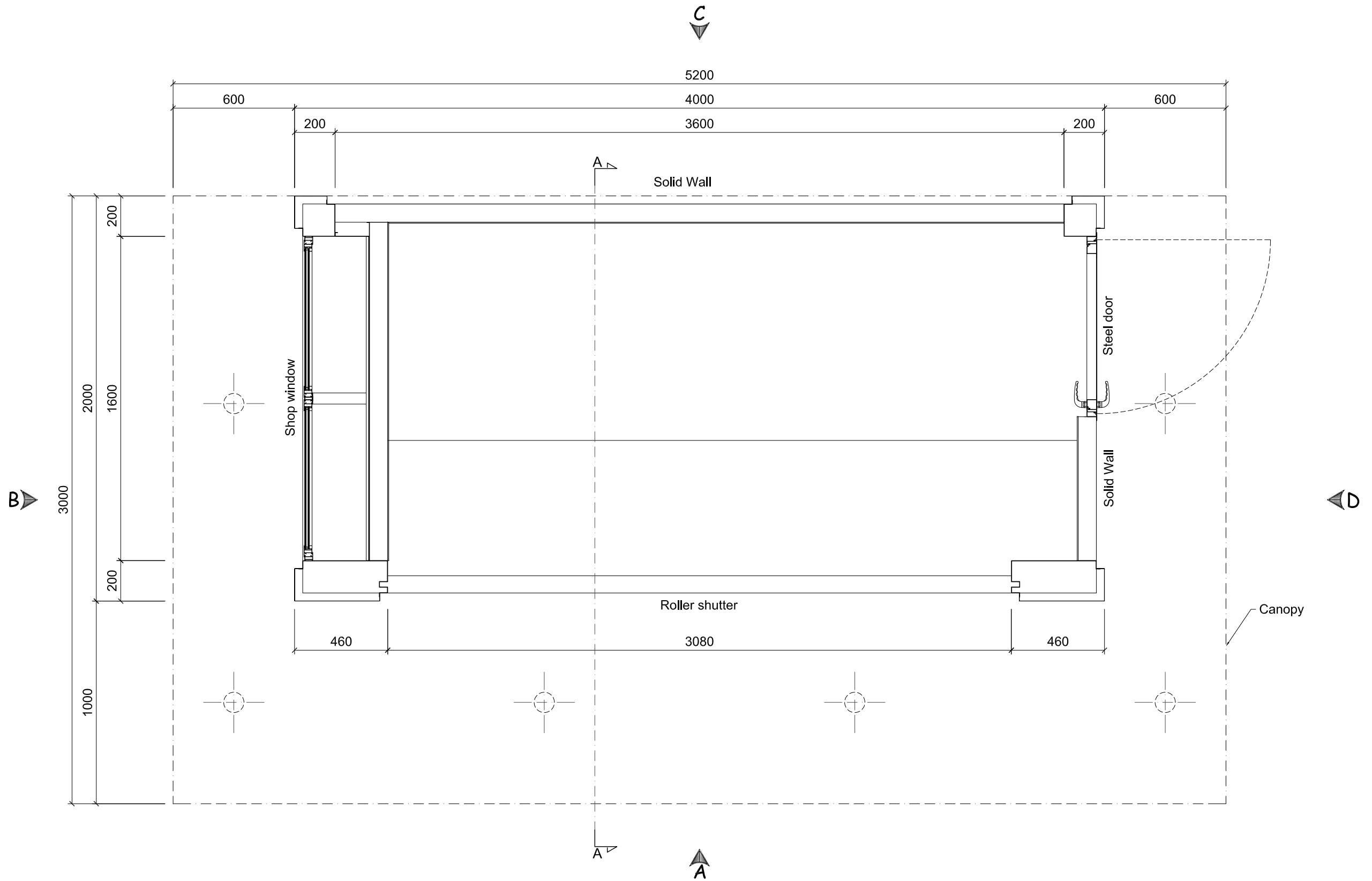
ASTECO INDUSTRIA reserves the ownership rights on this drawing and the same cannot be reproduced or transferred to third parties without its written authorization

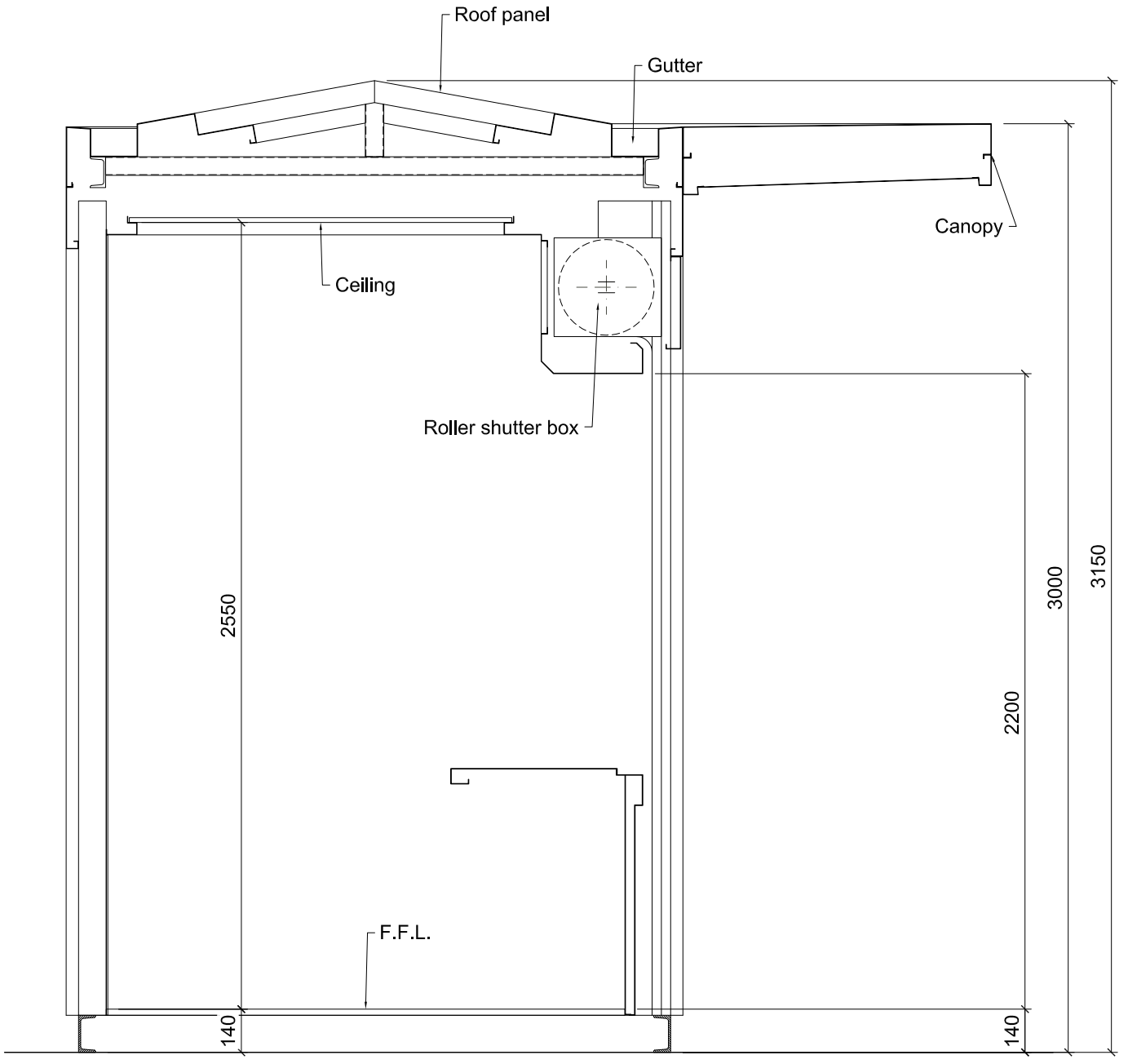
SET OF DRAWINGS NUMBER:
AIC 10/16
REV. 9

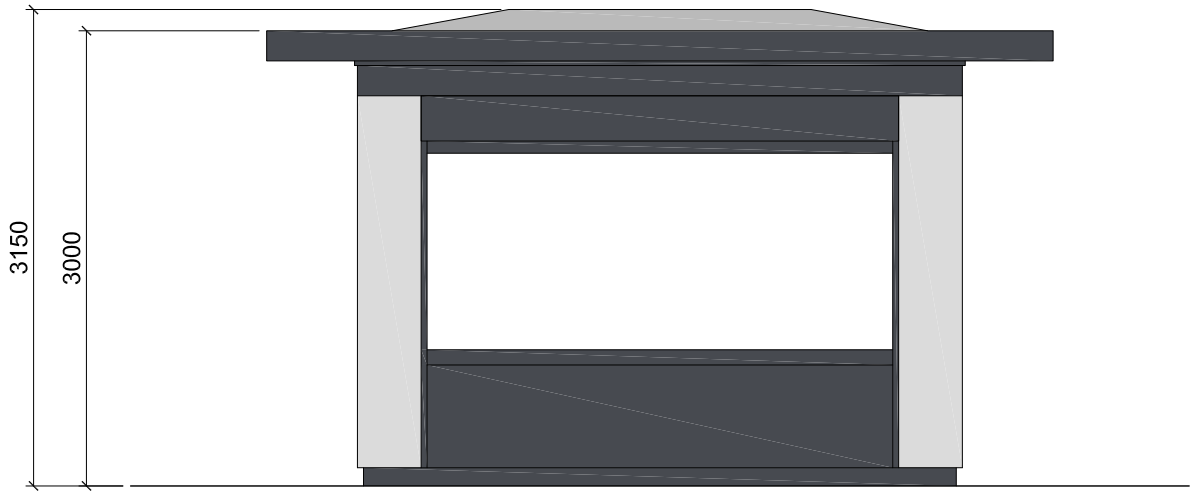
OUTLINE DESCRIPTION

EXTERNAL DIMENSIONS

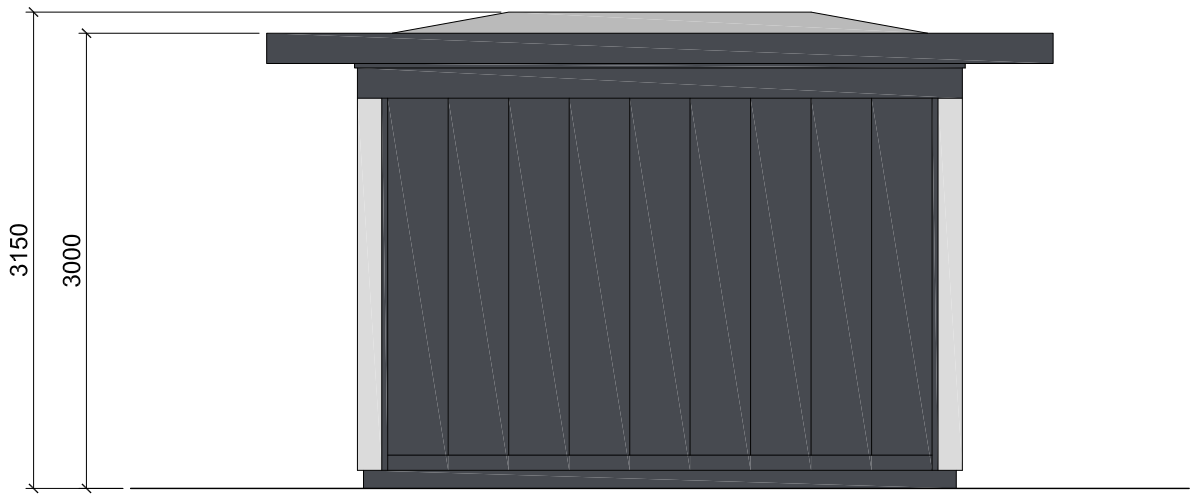
- BODY LENGTH AT FLOOR LEVEL: **4000 mm**
- BODY WIDTH AT FLOOR LEVEL: **2000 mm**
- TOTAL FLOOR AREA: **08.00 sqm**
- OVERALL LENGTH OF ROOF: **5200 mm**
- OVERALL WIDTH OF ROOF: **3000 mm**
- TOTAL COVERED AREA: **15.60 sqm**
- HEIGHT TO ROOF APEX: **3150 mm**



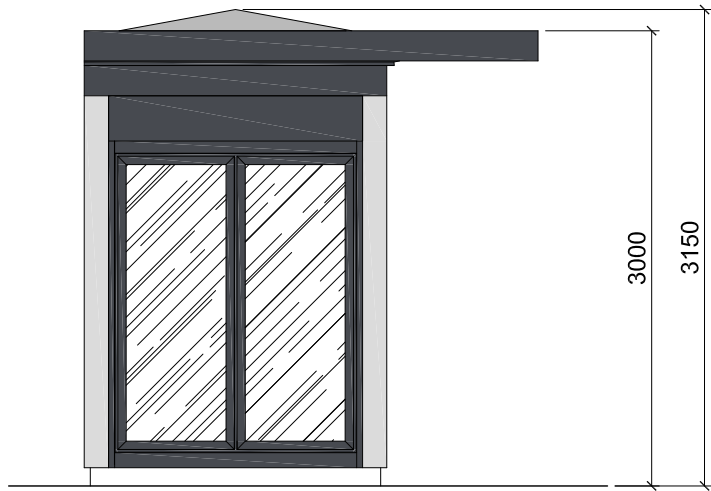




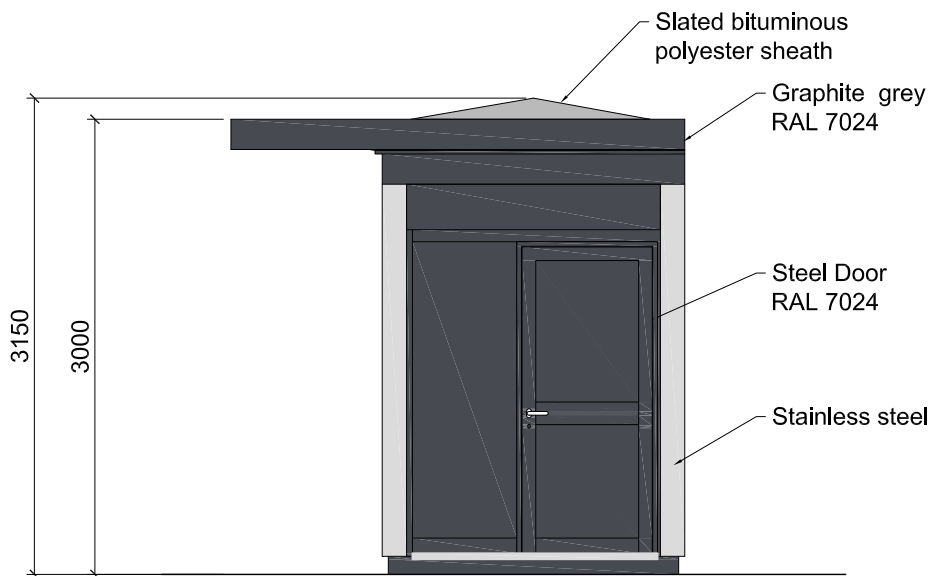
Elevation A



Elevation C



Elevation B



Elevation D