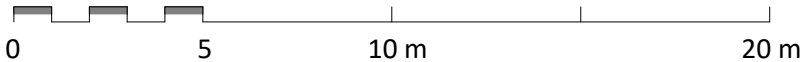
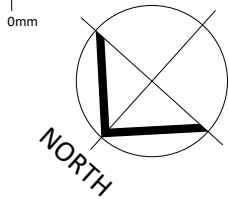


Proposed - Site Plan
1 : 200



C:\Users\David Obaro\Dropbox\1214-Buckland Crescent\BIM\Revit\1214 - Buckland Crescent.No29.rvt
Responsibility is not accepted for errors made by others in scaling from this drawing.
All construction information should be taken from figured dimensions only.



Key Notes - General Arrangement

- 1 Single Bedroom
- 2 Double Bedroom
- 3 Bathroom
- 4 Ensuite
- 5 Storage/Utility
- 6 Entrance Lobby with fully glazed wall and door with painted timber frames
- 7 Hallway
- 8 Terrace
- 9 Kitchen
- 10 Living Room
- 11 Powder coated aluminium brise soleil
- 12 Single ply membrane flat roof to new entrance lobby
- 13 Increase window structural opening. Replace window with good quality painted timber sash window to match existing.
- 14 High quality external porcelain tiles
- 15 New high quality painted timber casement window in enlarged opening
- 16 Infill existing door opening and install new high quality powder coated aluminium window
- 17 All front elevation windows are to be retained and reglazed with slimline double glazed units in existing sashes
- 18 Retain and relocate existing lower ground floor high quality timber casement window to upper ground level.
~~Window to be obscure glazed and non-opening.~~

P05	11/10/22	Revised for Planning. Clarification on window materials
P04	29/09/22	Revised for Planning. Includes replacement window details and glazed lobby external material
P03	01/08/2022	Revised to show relocated window at upper ground level. Issued for Planning
P02	14/07/2022	Revised for Planning
P01	04/04/2022	Issued for Planning

STATUS	REV	DATE	DESCRIPTION	REVISED BY
CLIENT				DO
Audrey & Jonathan Stevens				SC
ORIGINATOR NO				1214.1

CONSULTANT	 <div>E2 Architecture•Interiors Unit 57 ContainerVile 1 Emma Street London E2 9FP 02071832285 studio@e2architecture.com</div>
------------	--

PROJECT
Buckland Crescent
29 Buckland Crescent
Belsize Park, London
NW3 5DJ

DRAWING TITLE
Proposed GA Plan - Site Plan

SUITABILITY STATUS PL : PLANNING	SCALE 1 : 200 @ A3
PROJECT ORIGINATOR ZONE LEVEL TYPE ROLE CLASSIFICATION NUMBER 1214.1-E2-0100	REVISION P05



Proposed - Lower Ground Floor Plan
1 : 100

C:\Users\David Obaro\Dropbox\1214-Buckland Crescent\BIM\Revit\1214 - Buckland Crescent.No29.rvt
Responsibility is not accepted for errors made by others in scaling from this drawing.
All construction information should be taken from figured dimensions only.

0mm 50mm

NORTH

Key Notes - General Arrangement

- Single Bedroom
- Double Bedroom
- Bathroom
- Ensuite
- Storage/Utility
- Entrance Lobby with fully glazed wall and door with painted timber frames
- Hallway
- Terrace
- Kitchen
- Living Room
- Powder coated aluminium brise soleil
- Single ply membrane flat roof to new entrance lobby
- Increase window structural opening. Replace window with good quality painted timber sash window to match existing.
- High quality external porcelain tiles
- New high quality painted timber casement window in enlarged opening
- Infill existing door opening and install new high quality powder coated aluminium window
- All front elevation windows are to be retained and reglazed with slimline double glazed units in existing sashes
- Retain and relocate existing lower ground floor high quality timber casement window to upper ground level.
~~Window to be obscure glazed and non-opening.~~

P05	11/10/22	Revised for Planning. Clarification on window materials
P04	29/09/22	Revised for Planning. Includes replacement window details and glazed lobby external material
P03	01/08/2022	Revised to show relocated window at upper ground level. Issued for Planning
P02	14/07/2022	Revised for Planning
P01	04/04/2022	Issued for Planning

STATUS	REV	DATE	DESCRIPTION	REVISED BY
				DO
CLIENT				CHECKED BY
Audrey & Jonathan Stevens				SC
				ORIGINATOR NO
				1214.1

CONSULTANT

E2

E2 Architecture+Interiors
Unit 57 ContainerVile
1 Emma Street
London
E2 9FP
02071832285
studio@e2architecture.com

www.e2architecture.com

PROJECT

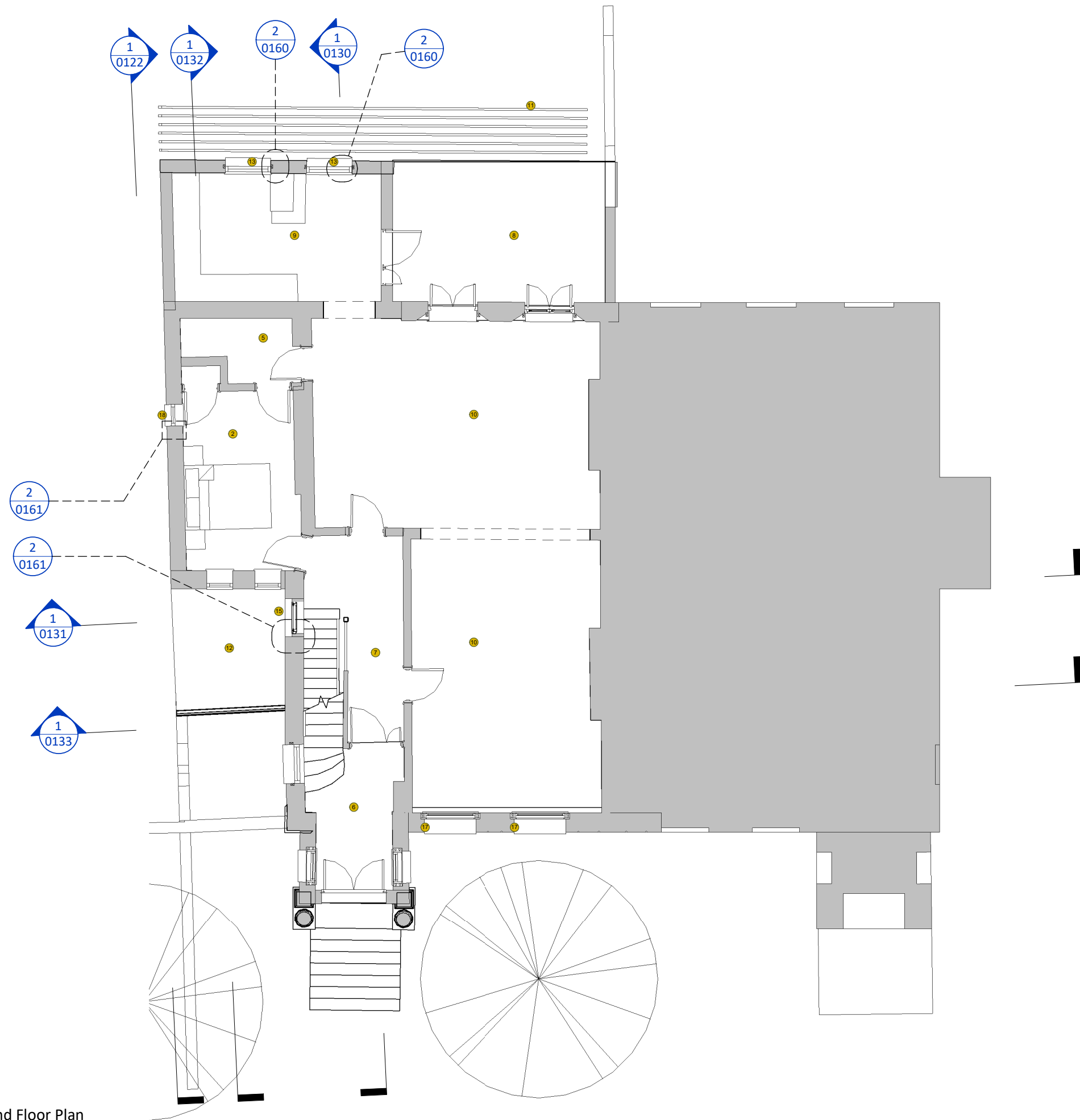
Buckland Crescent
29 Buckland Crescent
Belsize Park, London
NW3 5DJ

DRAWING TITLE

Proposed GA Plan - Lower Ground Floor Plan

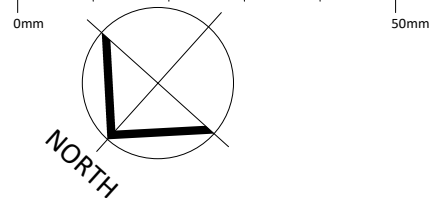
SUITABILITY STATUS PL : PLANNING	SCALE 1 : 100 @ A3
-------------------------------------	-----------------------

PROJECT ORIGINATOR ZONE LEVEL TYPE ROLE CLASSIFICATION NUMBER	REVISION
1214.1-E2-0111	P05



Proposed - Upper Ground Floor Plan
1 : 100

C:\Users\David Obaro\Dropbox\1214-Buckland Crescent\BIM\Revit\1214 - Buckland Crescent\No29.rvt
Responsibility is not accepted for errors made by others in scaling from this drawing.
All construction information should be taken from figured dimensions only.



Key Notes - General Arrangement

- 1 Single Bedroom
- 2 Double Bedroom
- 3 Bathroom
- 4 Ensuite
- 5 Storage/Utility
- 6 Entrance Lobby with fully glazed wall and door with painted timber frames
- 7 Hallway
- 8 Terrace
- 9 Kitchen
- 10 Living Room
- 11 Powder coated aluminium brise soleil
- 12 Single ply membrane flat roof to new entrance lobby
- 13 Increase window structural opening. Replace window with good quality painted timber sash window to match existing.
- 14 High quality external porcelain tiles
- 15 New high quality painted timber casement window in enlarged opening
- 16 Infill existing door opening and install new high quality powder coated aluminium window
- 17 All front elevation windows are to be retained and reglazed with slimline double glazed units in existing sashes
- 18 Retain and relocate existing lower ground floor high quality timber casement window to upper ground level. Window to be obscure glazed and non-opening.

P05	11/10/22	Revised for Planning. Clarification on window materials
P04	29/09/22	Revised for Planning. Includes replacement window details and glazed lobby external material
P03	01/08/2022	Revised to show relocated window at upper ground level. Issued for Planning
P02	14/07/2022	Revised for Planning
P01	04/04/2022	Issued for Planning

STATUS	REV	DATE	DESCRIPTION	REVISED BY
CLIENT				DO
Audrey & Jonathan Stevens				CHECKED BY
				SC
				ORIGINATOR NO
				1214.1

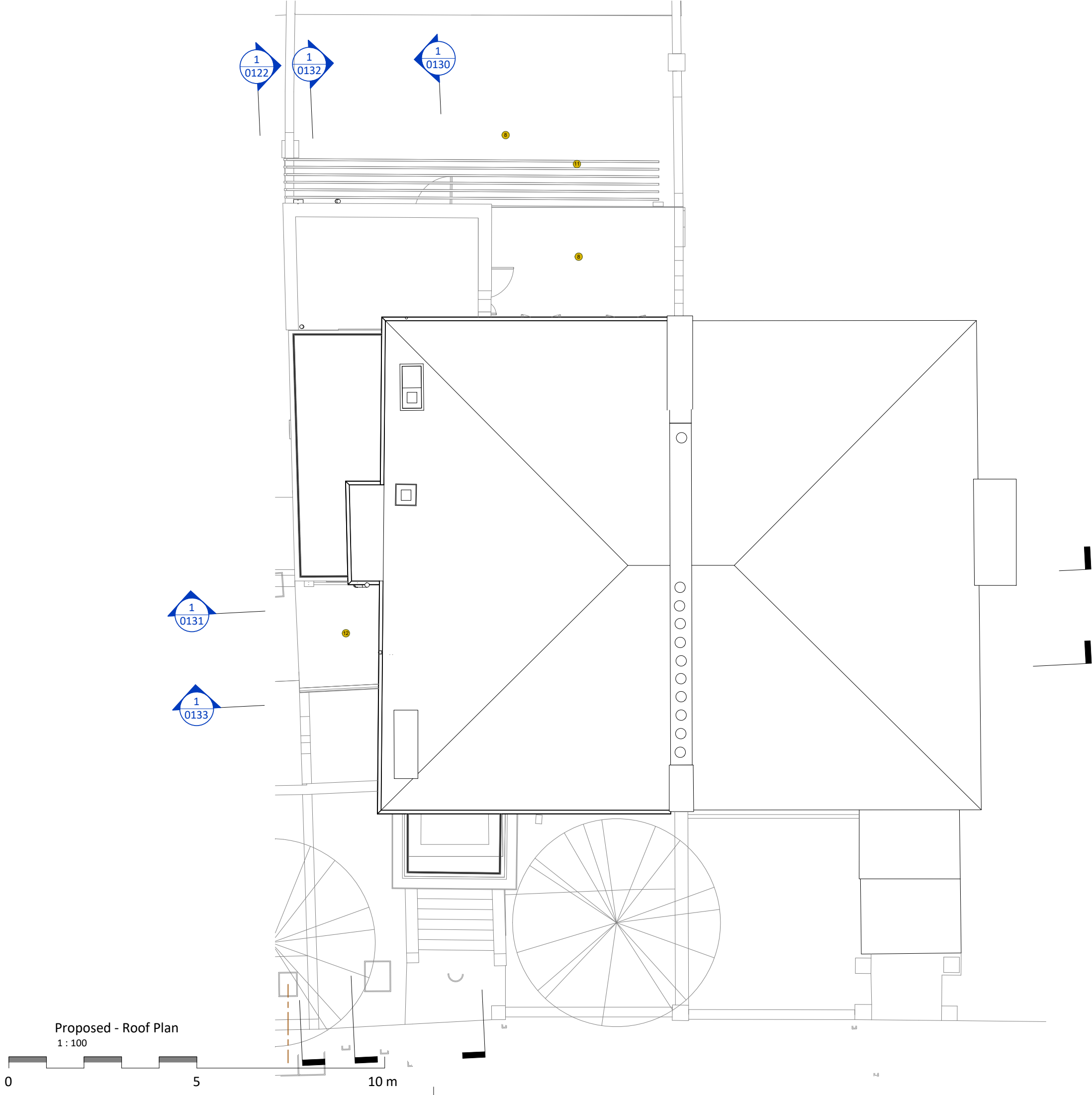
CONSULTANT	E2 Architecture+Interiors Unit 57 ContainerVile 1 Emma Street London E2 9FP 02071832285 studio@e2architecture.com
------------	---

PROJECT	Buckland Crescent 29 Buckland Crescent Belsize Park, London NW3 5DJ
---------	--

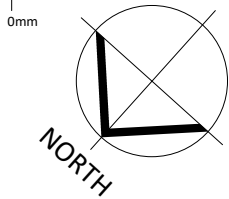
DRAWING TITLE	Proposed GA Plan - Upper Ground Floor Plan
---------------	--

SUITABILITY STATUS	SCALE
PL : PLANNING	1 : 100 @ A3

PROJECT ORIGINATOR ZONE LEVEL TYPE ROLE CLASSIFICATION NUMBER	REVISION
1214.1-E2-0112	P05



C:\Users\David Obaro\Dropbox\1214-Buckland Crescent\BIM\Revit\1214 - Buckland Crescent.No29.rvt
Responsibility is not accepted for errors made by others in scaling from this drawing.
All construction information should be taken from figured dimensions only.



Key Notes - General Arrangement

- 1 Single Bedroom
- 2 Double Bedroom
- 3 Bathroom
- 4 Ensuite
- 5 Storage/Utility
- 6 Entrance Lobby with fully glazed wall and door with painted timber frames
- 7 Hallway
- 8 Terrace
- 9 Kitchen
- 10 Living Room
- 11 Powder coated aluminium brise soleil
- 12 Single ply membrane flat roof to new entrance lobby
- 13 Increase window structural opening. Replace window with good quality painted timber sash window to match existing.
- 14 High quality external porcelain tiles
- 15 New high quality painted timber casement window in enlarged opening
- 16 Infill existing door opening and install new high quality powder coated aluminium window
- 17 All front elevation windows are to be retained and reglazed with slimline double glazed units in existing sashes
- 18 Retain and relocate existing lower ground floor high quality timber casement window to upper ground level.
~~Window to be obscure glazed and non-opening.~~

P05	11/10/22	Revised for Planning. Clarification on window materials
P04	29/09/22	Revised for Planning. Includes replacement window details and glazed lobby external material
P03	01/08/2022	Revised to show relocated window at upper ground level. Issued for Planning
P02	14/07/2022	Revised for Planning
P01	04/04/2022	Issued for Planning

STATUS	REV	DATE	DESCRIPTION	REVISED BY
CLIENT				DO
Audrey & Jonathan Stevens				CHECKED BY
				SC
				ORIGINATOR NO
				1214.1

CONSULTANT	 <div>E2 Architecture•Interiors Unit 57 ContainerVile 1 Emma Street London E2 9FP 02071832285 studio@e2architecture.com</div>
www.e2architecture.com	

PROJECT
Buckland Crescent
29 Buckland Crescent
Belsize Park, London
NW3 5DJ

DRAWING TITLE
Proposed GA Plan - Roof Plan

SUITABILITY STATUS	SCALE
PL : PLANNING	1 : 100 @ A3

PROJECT ORIGINATOR ZONE LEVEL TYPE ROLE CLASSIFICATION NUMBER	REVISION
1214.1-E2-0113	P05



Proposed - Front Elevation
1 : 100

Key Notes - General Arrangement

- 1 Single Bedroom
- 2 Double Bedroom
- 3 Bathroom
- 4 Ensuite
- 5 Storage/Utility
- 6 Entrance Lobby with fully glazed wall and door with painted timber frames
- 7 Hallway
- 8 Terrace
- 9 Kitchen
- 10 Living Room
- 11 Powder coated aluminium brise soleil
- 12 Single ply membrane flat roof to new entrance lobby
- 13 Increase window structural opening. Replace window with good quality painted timber sash window to match existing.
- 14 High quality external porcelain tiles
- 15 New high quality painted timber casement window in enlarged opening
- 16 Infill existing door opening and install new high quality powder coated aluminium window
- 17 All front elevation windows are to be retained and reglazed with slimline double glazed units in existing sashes
- 18 Retain and relocate existing lower ground floor high quality timber casement window to upper ground level.
Window to be obscure glazed and non-opening.

P05	11/10/22	Revised for Planning. Clarification on window materials
P04	29/09/22	Revised for Planning. Includes replacement window details and glazed lobby external material
P03	01/08/2022	Revised to show relocated window at upper ground level. Issued for Planning
P02	14/07/2022	Revised for Planning
P01	04/04/2022	Issued for Planning

STATUS	REV	DATE	DESCRIPTION	REVISED BY
CLIENT				DO
Audrey & Jonathan Stevens				CHECKED BY
				SC
ORIGINATOR NO				1214.1

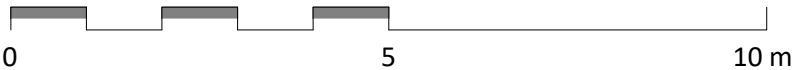
CONSULTANT	<div><div>E2</div><div>E2 Architecture•Interiors Unit 57 ContainerVile 1 Emma Street London E2 9FP 02071832285 studio@e2architecture.com</div></div>
www.e2architecture.com	

PROJECT
Buckland Crescent
29 Buckland Crescent
Belsize Park, London
NW3 5DJ

DRAWING TITLE
Proposed GA Elevation - Front Elevation

SUITABILITY STATUS PL : PLANNING	SCALE 1 : 100 @ A3
-------------------------------------	-----------------------

PROJECT ORIGINATOR ZONE LEVEL TYPE ROLE CLASSIFICATION NUMBER	REVISION
1214.1-E2-0120	P05





Proposed - Rear Elevation
1 : 100

Key Notes - General Arrangement

- 1 Single Bedroom
- 2 Double Bedroom
- 3 Bathroom
- 4 Ensuite
- 5 Storage/Utility
- 6 Entrance Lobby with fully glazed wall and door with painted timber frames
- 7 Hallway
- 8 Terrace
- 9 Kitchen
- 10 Living Room
- 11 Powder coated aluminium brise soleil
- 12 Single ply membrane flat roof to new entrance lobby
- 13 Increase window structural opening. Replace window with good quality painted timber sash window to match existing.
- 14 High quality external porcelain tiles
- 15 New high quality painted timber casement window in enlarged opening
- 16 Infill existing door opening and install new high quality powder coated aluminium window
- 17 All front elevation windows are to be retained and reglazed with slimline double glazed units in existing sashes
- 18 Retain and relocate existing lower ground floor high quality timber casement window to upper ground level.
Window to be obscure glazed and non-opening.

P05	11/10/22	Revised for Planning. Clarification on window materials
P04	29/09/22	Revised for Planning. Includes replacement window details and glazed lobby external material
P03	01/08/2022	Revised to show relocated window at upper ground level. Issued for Planning
P02	14/07/2022	Revised for Planning
P01	04/04/2022	Issued for Planning

STATUS	REV	DATE	DESCRIPTION	REVISED BY
CLIENT				DO
Audrey & Jonathan Stevens				CHECKED BY
				SC
ORIGINATOR NO				1214.1

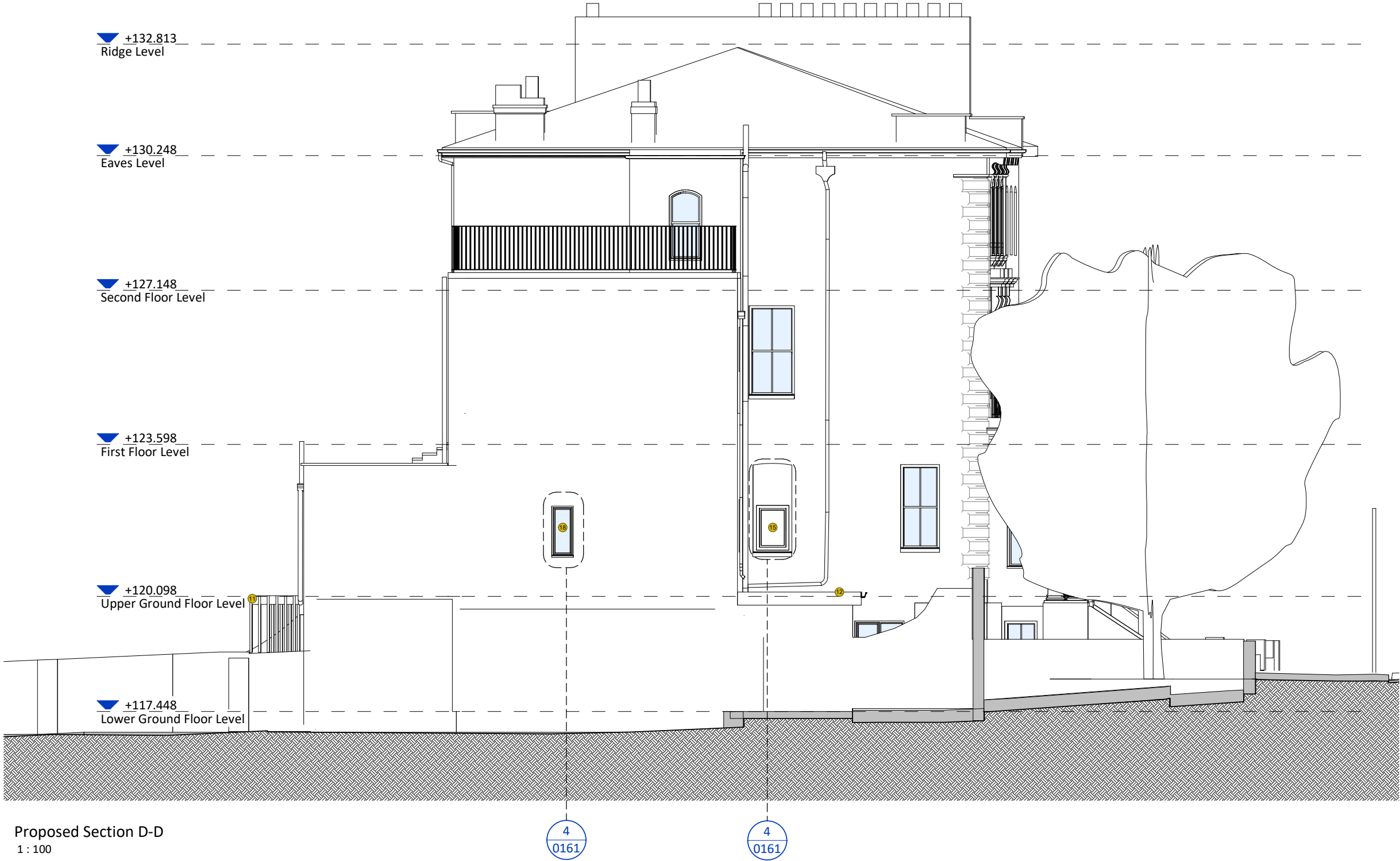
CONSULTANT	E2 Architecture+Interiors Unit 57 ContainerVile 1 Emma Street London E2 9FP 02071832285 studio@e2architecture.com
------------	---

PROJECT	Buckland Crescent 29 Buckland Crescent Belsize Park, London NW3 5DJ
---------	--

DRAWING TITLE	Proposed GA Elevation - Rear Elevation
---------------	--

SUITABILITY STATUS PL : PLANNING	SCALE 1 : 100 @ A3
-------------------------------------	-----------------------

PROJECT ORIGINATOR ZONE LEVEL TYPE ROLE CLASSIFICATION NUMBER	REVISION
1214.1-E2-0121	P05



Key Notes - General Arrangement

- 1 Single Bedroom
- 2 Double Bedroom
- 3 Bathroom
- 4 Ensuite
- 5 Storage/Utility
- 6 Entrance Lobby with fully glazed wall and door with painted timber frames
- 7 Hallway
- 8 Terrace
- 9 Kitchen
- 10 Living Room
- 11 Powder coated aluminium brise soleil
- 12 Single ply membrane flat roof to new entrance lobby
- 13 Increase window structural opening. Replace window with good quality painted timber sash window to match existing.
- 14 High quality external porcelain tiles
- 15 New high quality painted timber casement window in enlarged opening
- 16 Infill existing door opening and install new high quality powder coated aluminium window
- 17 All front elevation windows are to be retained and reglazed with slimline double glazed units in existing sashes
- 18 Retain and relocate existing lower ground floor high quality timber casement window to upper ground level.
Window to be obscure glazed and non-opening.

P05	11/10/22	Revised for Planning. Clarification on window materials
P04	29/09/22	Revised for Planning. Includes replacement window details and glazed lobby external material
P03	01/08/2022	Revised to show relocated window at upper ground level. Issued for Planning
P02	14/07/2022	Revised for Planning
P01	04/04/2022	Issued for Planning

STATUS	REV	DATE	DESCRIPTION	REVISED BY
				DO
CLIENT				CHECKED BY
Audrey & Jonathan Stevens				SC
				ORIGINATOR NO
				1214.1

CONSULTANT	E2 Architecture+Interiors Unit 57 ContainerVile 1 Emma Street London E2 9FP 02071832285 studio@e2architecture.com
------------	---

PROJECT	Buckland Crescent 29 Buckland Crescent Belsize Park, London NW3 5DJ
---------	--

DRAWING TITLE	Proposed GA Elevation - East Elevation
---------------	--

SUITABILITY STATUS	SCALE
PL : PLANNING	1 : 100 @ A3

PROJECT ORIGINATOR ZONE LEVEL TYPE ROLE CLASSIFICATION NUMBER	REVISION
1214.1-E2-0122	P05

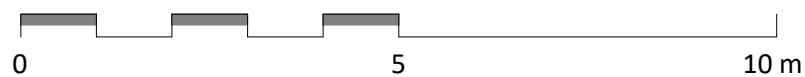
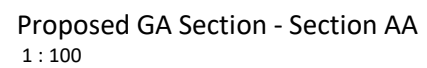
- 1 Single Bedroom
- 2 Double Bedroom
- 3 Bathroom
- 4 Ensuite
- 5 Storage/Utility
- 6 Entrance Lobby with fully glazed wall and door with painted timber frames
- 7 Hallway
- 8 Terrace
- 9 Kitchen
- 10 Living Room
- 11 Powder coated aluminium brise soleil
- 12 Single ply membrane flat roof to new entrance lobby
- 13 Increase window structural opening. Replace window with good quality painted timber sash window to match existing.
- 14 High quality external porcelain tiles
- 15 New high quality painted timber casement window in enlarged opening
- 16 Infill existing door opening and install new high quality powder coated aluminium window
- 17 All front elevation windows are to be retained and reglazed with slimline double glazed units in existing sashes
- 18 Retain and relocate existing lower ground floor high quality timber casement window to upper ground level.

Window to be obscure glazed and non-opening.

STATUS	REV	DATE	DESCRIPTION
CLIENT			REVISED BY
Audrey & Jonathan Stevens			DO
			CHECKED BY
			SC
			ORIGINATOR NO
			1214.1

PROJECT
Buckland Crescent
29 Buckland Crescent
Belsize Park, London
NW3 5DJ

PROJECT ORIGINATOR ZONE LEVEL TYPE ROLE CLASSIFICATION NUMBER	REVISION
1214.1-E2-0130	P05



Key Notes - General Arrangement

- 1

Single Bedroom
- 2

Double Bedroom
- 3

Bathroom
- 4

Ensuite
- 5

Storage/Utility
- 6

Entrance Lobby with fully glazed wall and door with painted timber frames
- 7

Hallway
- 8

Terrace
- 9

Kitchen
- 10

Living Room
- 11

Powder coated aluminium brise soleil
- 12

Single ply membrane flat roof to new entrance lobby
- 13

Increase window structural opening. Replace window with good quality painted timber sash window to match existing.
- 14

High quality external porcelain tiles
- 15

New high quality painted timber casement window in enlarged opening
- 16

Infill existing door opening and install new high quality powder coated aluminium window
- 17

All front elevation windows are to be retained and reglazed with slimline double glazed units in existing sashes
- 18

Retain and relocate existing lower ground floor high quality timber casement window to upper ground level.
Window to be obscure glazed and non-opening.

P05	11/10/22	Revised for Planning. Clarification on window materials
P04	29/09/22	Revised for Planning. Includes replacement window details and glazed lobby external material
P03	01/08/2022	Revised to show relocated window at upper ground level. Issued for Planning
P02	14/07/2022	Revised for Planning
P01	04/04/2022	Issued for Planning

STATUS	REV	DATE	DESCRIPTION	REVISED BY
CLIENT				DO
Audrey & Jonathan Stevens				CHECKED BY SC
				ORIGINATOR NO 1214.1

CONSULTANT	<div><div>E2</div><div>E2 Architecture+Interiors Unit 57 ContainerVile 1 Emma Street London E2 9FP 02071832285 studio@e2architecture.com</div></div>
www.e2architecture.com	

PROJECT	Buckland Crescent 29 Buckland Crescent Belsize Park, London NW3 5DJ
---------	--

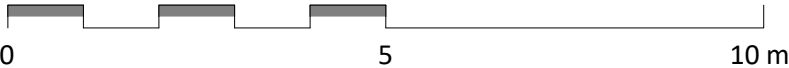
DRAWING TITLE	Proposed GA Section - Section BB
---------------	----------------------------------

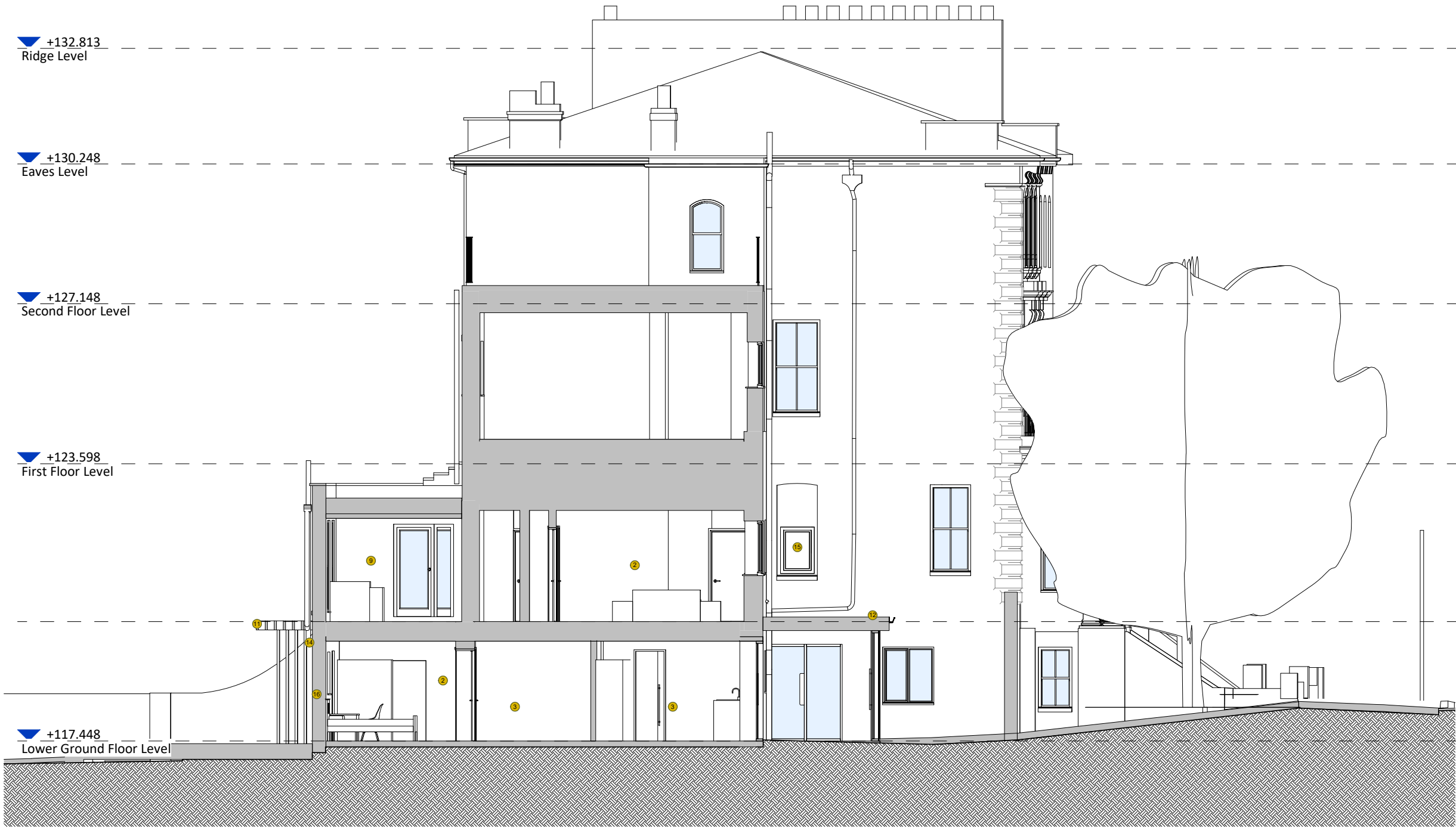
SUITABILITY STATUS PL : PLANNING	SCALE 1 : 100 @ A3
-------------------------------------	-----------------------

PROJECT ORIGINATOR ZONE LEVEL TYPE ROLE CLASSIFICATION NUMBER	REVISION
1214.1-E2-0131	P05



Proposed GA Section - Section BB
1 : 100





Proposed Section C-C
1 : 100

Key Notes - General Arrangement

- 1 Single Bedroom
- 2 Double Bedroom
- 3 Bathroom
- 4 Ensuite
- 5 Storage/Utility
- 6 Entrance Lobby with fully glazed wall and door with painted timber frames
- 7 Hallway
- 8 Terrace
- 9 Kitchen
- 10 Living Room
- 11 Powder coated aluminium brise soleil
- 12 Single ply membrane flat roof to new entrance lobby
- 13 Increase window structural opening. Replace window with good quality painted timber sash window to match existing.
- 14 High quality external porcelain tiles
- 15 New high quality painted timber casement window in enlarged opening
- 16 Infill existing door opening and install new high quality powder coated aluminium window
- 17 All front elevation windows are to be retained and reglazed with slimline double glazed units in existing sashes
- 18 Retain and relocate existing lower ground floor high quality timber casement window to upper ground level.
Window to be obscure glazed and non-opening.

P05	11/10/22	Revised for Planning. Clarification on window materials
P04	29/09/22	Revised for Planning. Includes replacement window details and glazed lobby external material
P03	01/08/2022	Revised to show relocated window at upper ground level. Issued for Planning
P02	14/07/2022	Revised for Planning
P01	04/04/2022	Issued for Planning

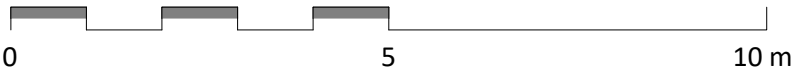
STATUS	REV	DATE	DESCRIPTION	REVISED BY
CLIENT				DO
Audrey & Jonathan Stevens				CHECKED BY
				SC
				ORIGINATOR NO
				1214.1

CONSULTANT	<div><div>E2</div><div>E2 Architecture+Interiors Unit 57 ContainerVile 1 Emma Street London E2 9FP 02071832285 studio@e2architecture.com</div></div>
www.e2architecture.com	

PROJECT	Buckland Crescent 29 Buckland Crescent Belsize Park, London NW3 5DJ
---------	--

DRAWING TITLE	Proposed GA Section - Section CC
---------------	----------------------------------

SUITABILITY STATUS PL : PLANNING	SCALE 1 : 100 @ A3
PROJECT ORIGINATOR ZONE LEVEL TYPE ROLE CLASSIFICATION NUMBER 1214.1-E2-0132	REVISION P05



Key Notes - General Arrangement

- 1 Single Bedroom
- 2 Double Bedroom
- 3 Bathroom
- 4 Ensuite
- 5 Storage/Utility
- 6 Entrance Lobby with fully glazed wall and door with painted timber frames
- 7 Hallway
- 8 Terrace
- 9 Kitchen
- 10 Living Room
- 11 Powder coated aluminium brise soleil
- 12 Single ply membrane flat roof to new entrance lobby
- 13 Increase window structural opening. Replace window with good quality painted timber sash window to match existing.
- 14 High quality external porcelain tiles
- 15 New high quality painted timber casement window in enlarged opening
- 16 Infill existing door opening and install new high quality powder coated aluminium window
- 17 All front elevation windows are to be retained and reglazed with slimline double glazed units in existing sashes
- 18 Retain and relocate existing lower ground floor high quality timber casement window to upper ground level.
Window to be obscure glazed and non-opening.

P05	11/10/22	Revised for Planning. Clarification on window materials
P04	29/09/22	Revised for Planning. Includes replacement window details and glazed lobby external material
P03	01/08/2022	Revised to show relocated window at upper ground level. Issued for Planning
P02	14/07/2022	Revised for Planning
P01	04/04/2022	Issued for Planning

STATUS	REV	DATE	DESCRIPTION	REVISED BY
CLIENT				DO
Audrey & Jonathan Stevens				CHECKED BY
				SC
				ORIGINATOR NO
				1214.1

CONSULTANT	<div>E2 Architecture•Interiors Unit 57 ContainerVile 1 Emma Street London E2 9FP 02071832285 studio@e2architecture.com</div>
www.e2architecture.com	

PROJECT

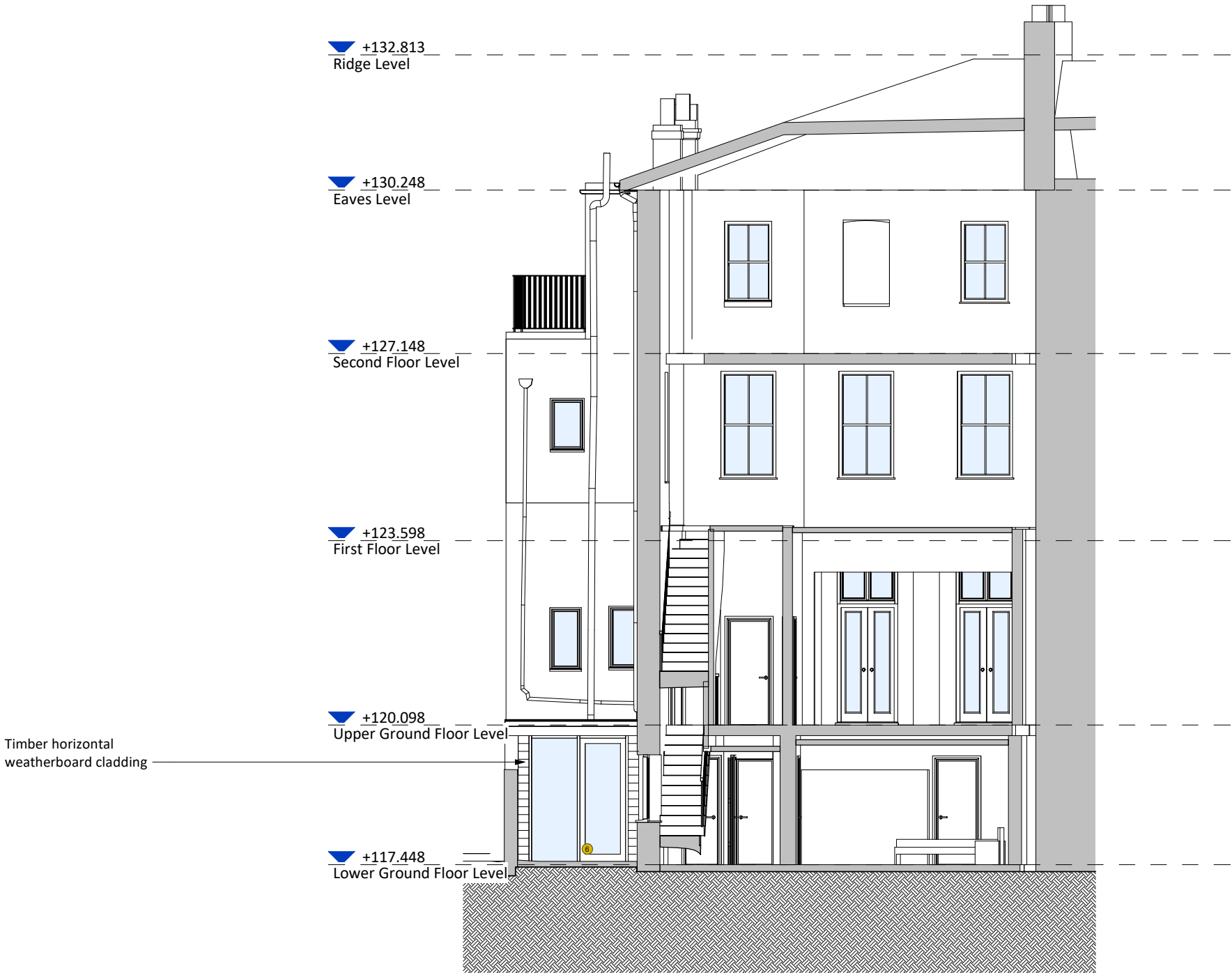
Buckland Crescent
29 Buckland Crescent
Belsize Park, London
NW3 5DJ

DRAWING TITLE

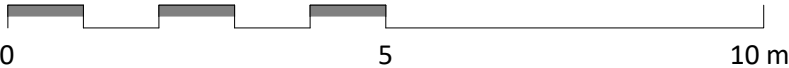
Proposed GA Section - Section DD

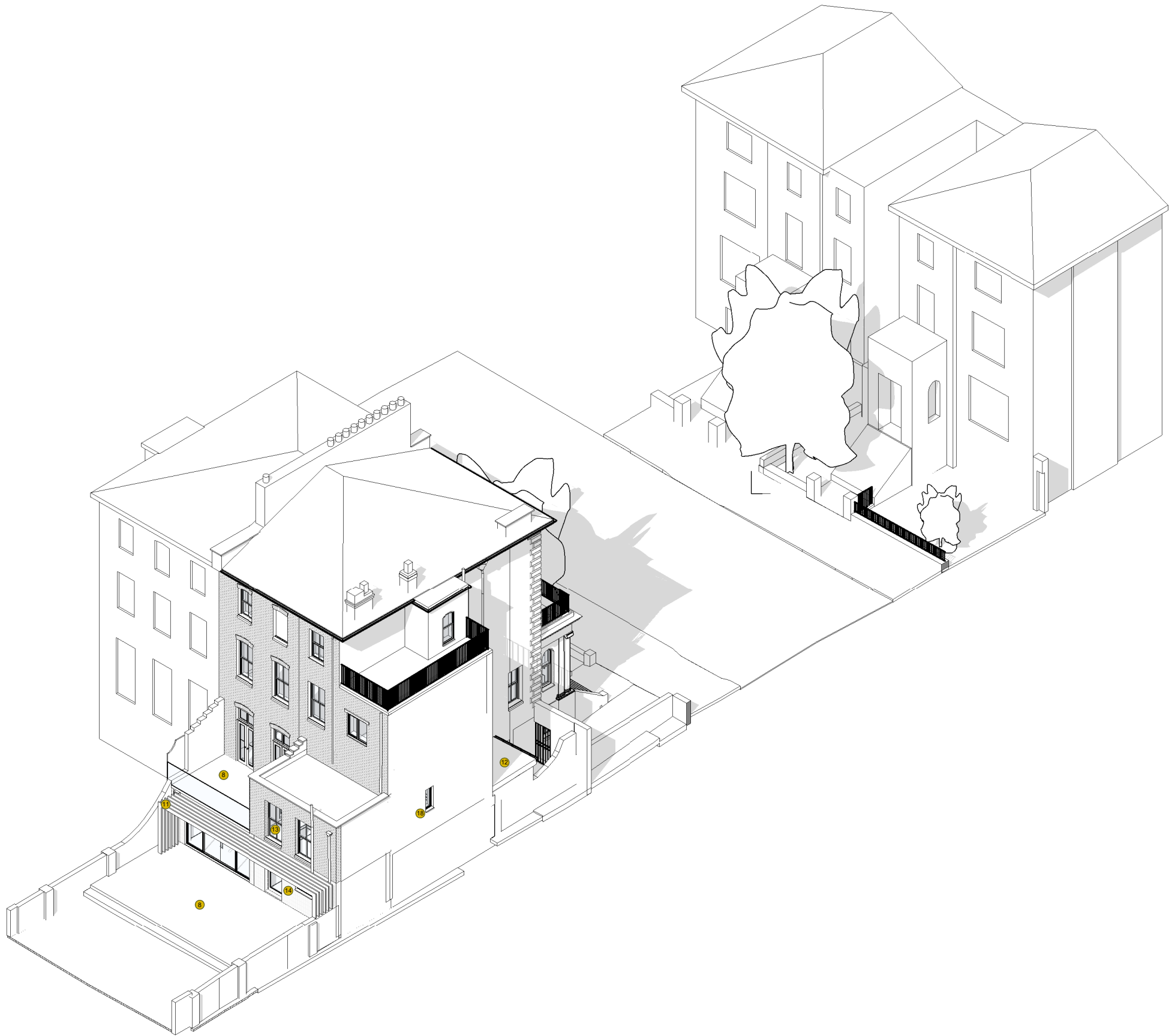
SUITABILITY STATUS	SCALE
PL : PLANNING	1 : 100 @ A3

PROJECT	ORIGINATOR	ZONE	LEVEL	TYPE	ROLE	CLASSIFICATION	NUMBER	REVISION
1214.1-E2-0133								P05



Proposed GA Section - Section DD
1 : 100





Proposed 3D View - Rear Axo

Key Notes - General Arrangement

- 1 Single Bedroom
- 2 Double Bedroom
- 3 Bathroom
- 4 Ensuite
- 5 Storage/Utility
- 6 Entrance Lobby with fully glazed wall and door with painted timber frames
- 7 Hallway
- 8 Terrace
- 9 Kitchen
- 10 Living Room
- 11 Powder coated aluminium brise soleil
- 12 Single ply membrane flat roof to new entrance lobby
- 13 Increase window structural opening. Replace window with good quality painted timber sash window to match existing.
- 14 High quality external porcelain tiles
- 15 New high quality painted timber casement window in enlarged opening
- 16 Infill existing door opening and install new high quality powder coated aluminium window
- 17 All front elevation windows are to be retained and reglazed with slimline double glazed units in existing sashes
- 18 Retain and relocate existing lower ground floor high quality timber casement window to upper ground level.
Window to be obscure glazed and non-opening.

P05	11/10/22	Revised for Planning. Clarification on window materials
P04	29/09/22	Revised for Planning. Includes replacement window details and glazed lobby external material
P03	01/08/2022	Revised to show relocated window at upper ground level. Issued for Planning
P02	14/07/2022	Revised for Planning
P01	04/04/2022	Issued for Planning

STATUS	REV	DATE	DESCRIPTION	REVISED BY
CLIENT				DO
Audrey & Jonathan Stevens				CHECKED BY
				SC
ORIGINATOR NO				1214.1

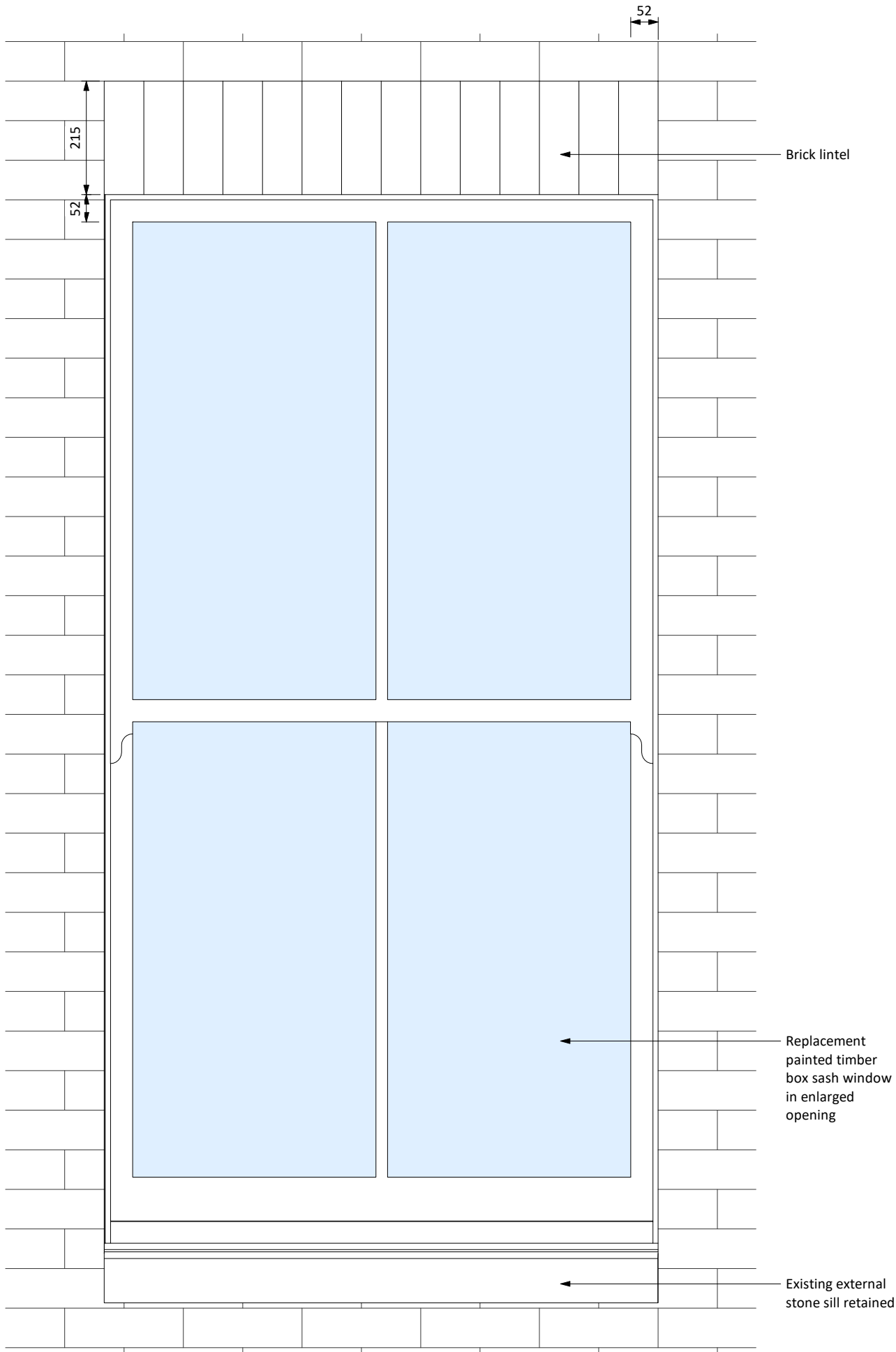
CONSULTANT	<div>E2 Architecture+Interiors Unit 57 ContainerVile 1 Emma Street London E2 9FP 02071832285 studio@e2architecture.com</div>
------------	--

PROJECT	Buckland Crescent 29 Buckland Crescent Belsize Park, London NW3 5DJ
---------	--

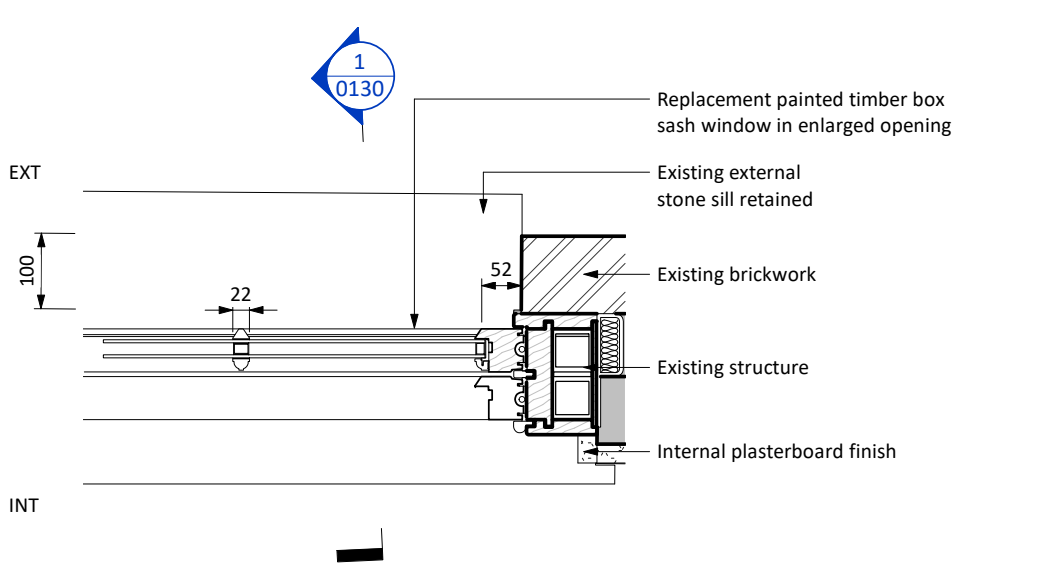
DRAWING TITLE	Proposed 3D View - Rear Axo
---------------	-----------------------------

SUITABILITY STATUS PL : PLANNING	SCALE @ A3
-------------------------------------	---------------

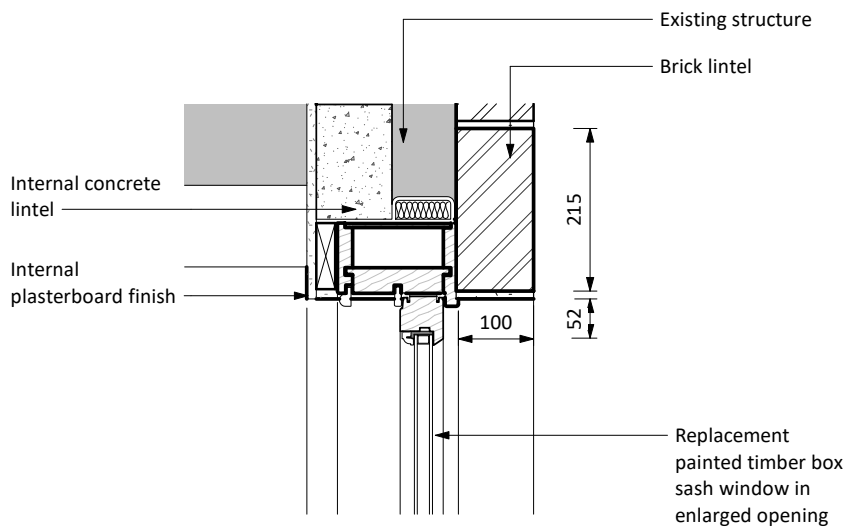
PROJECT ORIGINATOR ZONE LEVEL TYPE ROLE CLASSIFICATION NUMBER	REVISION
1214.1-E2-0150	P05



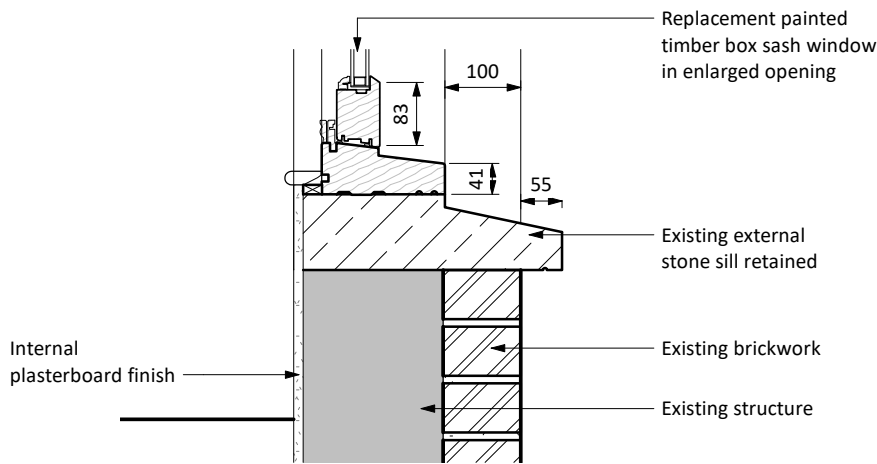
1 Proposed Detail - Rear Elevation - Replacement Sash Window Elevation Detail
1 : 10



2 Proposed Detail - Upper Ground Floor - Replacement Sash Window Jamb Detail
1 : 10



3 Proposed GA Detail - Section AA - Replacement Sash Window Head Detail
1 : 10



4 Proposed GA Detail - Section AA - Replacement Sash Window Sill Detail
1 : 10

C:\Users\David Obaro\Dropbox\1214-Buckland Crescent\BIM\Revit\1214 - Buckland Crescent No29.rvt
Responsibility is not accepted for errors made by others in scaling from this drawing.
All construction information should be taken from figured dimensions only.

0mm 50mm

Key Notes - General Arrangement

- 1 Single Bedroom
- 2 Double Bedroom
- 3 Bathroom
- 4 Ensuite
- 5 Storage/Utility
- 6 Entrance Lobby with fully glazed wall and door with painted timber frames
- 7 Hallway
- 8 Terrace
- 9 Kitchen
- 10 Living Room
- 11 Powder coated aluminium brise soleil
- 12 Single ply membrane flat roof to new entrance lobby
- 13 Increase window structural opening. Replace window with good quality painted timber sash window to match existing.
- 14 High quality external porcelain tiles
- 15 New high quality painted timber casement window in enlarged opening
- 16 Infill existing door opening and install new high quality powder coated aluminium window
- 17 All front elevation windows are to be retained and reglazed with slimline double glazed units in existing sashes
- 18 Retain and relocate existing lower ground floor high quality timber casement window to upper ground level.
~~Window to be obscure glazed and non-opening.~~

P05	11/10/22	Revised for Planning. Clarification on window materials
P04	29/09/22	Revised for Planning. Includes replacement window details and glazed lobby external material
P03	01/08/2022	Revised to show relocated window at upper ground level. Issued for Planning
P02	14/07/2022	Revised for Planning
P01	04/04/2022	Issued for Planning

STATUS	REV	DATE	DESCRIPTION
--------	-----	------	-------------

CLIENT

Audrey & Jonathan Stevens

REVISED BY

DO

CHECKED BY

SC

ORIGINATOR NO

1214.1

CONSULTANT

E2

E2 Architecture+Interiors
Unit 57 ContainerVile
1 Emma Street
London
E2 9FP
02071832285
studio@e2architecture.com

www.e2architecture.com

PROJECT

Buckland Crescent
29 Buckland Crescent
Belsize Park, London
NW3 5DJ

DRAWING TITLE

Proposed GA Detail - Replacement Painted
Timber Sash Window Detail

SUITABILITY STATUS
PL : PLANNING

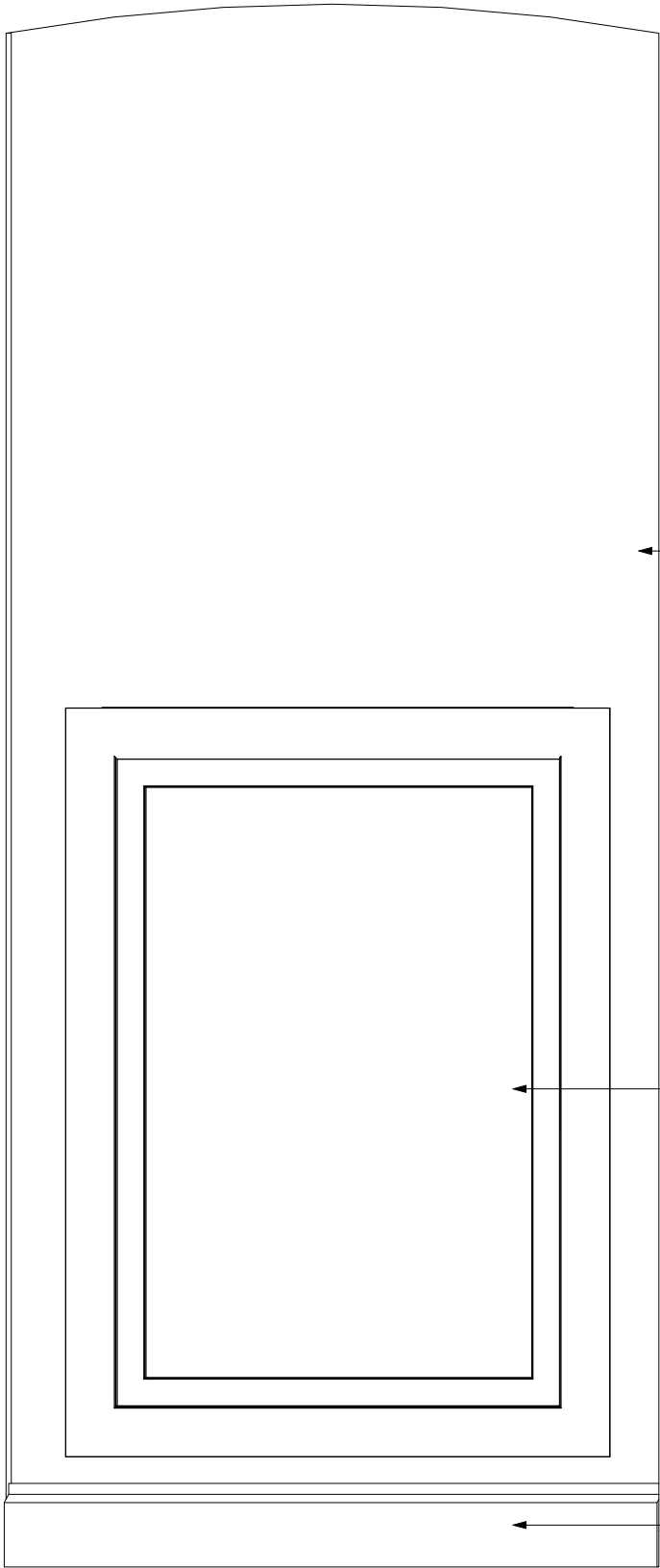
SCALE
1 : 10 @ A3

PROJECT | ORIGINATOR | ZONE | LEVEL | TYPE | ROLE | CLASSIFICATION | NUMBER

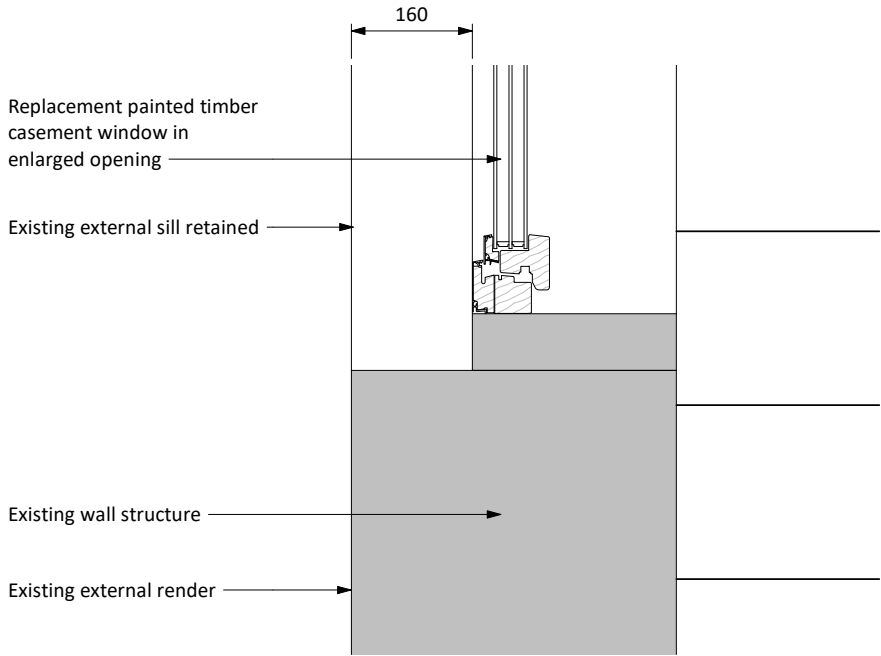
1214.1-E2-0160

REVISION

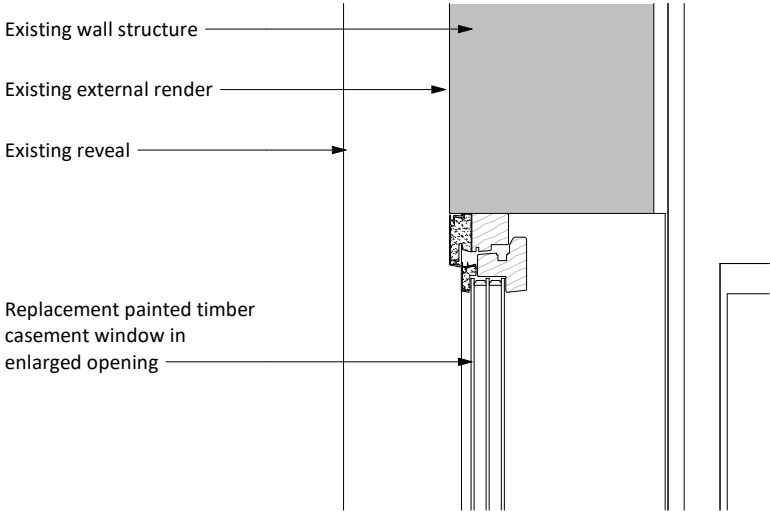
P05



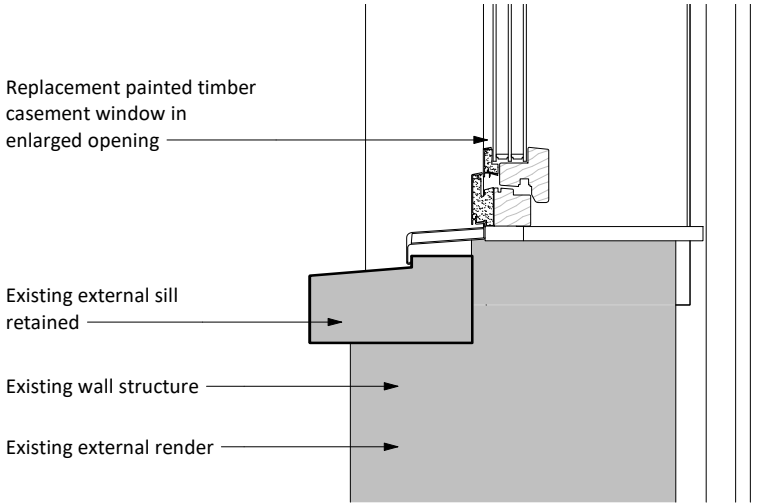
Proposed Detail - Casement Window Elevation
1 : 10



2 Proposed Detail - Replacement Casement Window Jamb Detail
1 : 10



3 Proposed Detail - Replacement Casement Window Head Detail
1 : 10



Proposed Detail - Casement Window Sill Detail
1 : 10

Key Notes - General Arrangement

- 1 Single Bedroom
- 2 Double Bedroom
- 3 Bathroom
- 4 Ensuite
- 5 Storage/Utility
- 6 Entrance Lobby with fully glazed wall and door with painted timber frames
- 7 Hallway
- 8 Terrace
- 9 Kitchen
- 10 Living Room
- 11 Powder coated aluminium brise soleil
- 12 Single ply membrane flat roof to new entrance lobby
- 13 Increase window structural opening. Replace window with good quality painted timber sash window to match existing.
- 14 High quality external porcelain tiles
- 15 New high quality painted timber casement window in enlarged opening
- 16 Infill existing door opening and install new high quality powder coated aluminium window
- 17 All front elevation windows are to be retained and reglazed with slimline double glazed units in existing sashes
- 18 Retain and relocate existing lower ground floor high quality timber casement window to upper ground level.
~~Window to be obscure glazed and non-opening.~~

P05	11/10/22	Revised for Planning. Clarification on window materials
P04	29/09/22	Revised for Planning. Includes replacement window details and glazed lobby external material
P03	01/08/2022	Revised to show relocated window at upper ground level. Issued for Planning
P02	14/07/2022	Revised for Planning
P01	04/04/2022	Issued for Planning

STATUS	REV	DATE	DESCRIPTION	REVISED BY
CLIENT				DO
Audrey & Jonathan Stevens				CHECKED BY
				SC
				ORIGINATOR NO
				1214.1

CONSULTANT	 <div>E2 Architecture+Interiors Unit 57 ContainerVile 1 Emma Street London E2 9FP 02071832285 studio@e2architecture.com</div>
------------	--

PROJECT	Buckland Crescent 29 Buckland Crescent Belsize Park, London NW3 5DJ
---------	--

DRAWING TITLE	Proposed GA Detail - Replacement Painted Timber Casement Window Detail
---------------	--

SUITABILITY STATUS PL : PLANNING	SCALE 1 : 10 @ A3
-------------------------------------	----------------------

PROJECT ORIGINATOR ZONE LEVEL TYPE ROLE CLASSIFICATION NUMBER	REVISION
1214.1-E2-0161	P05