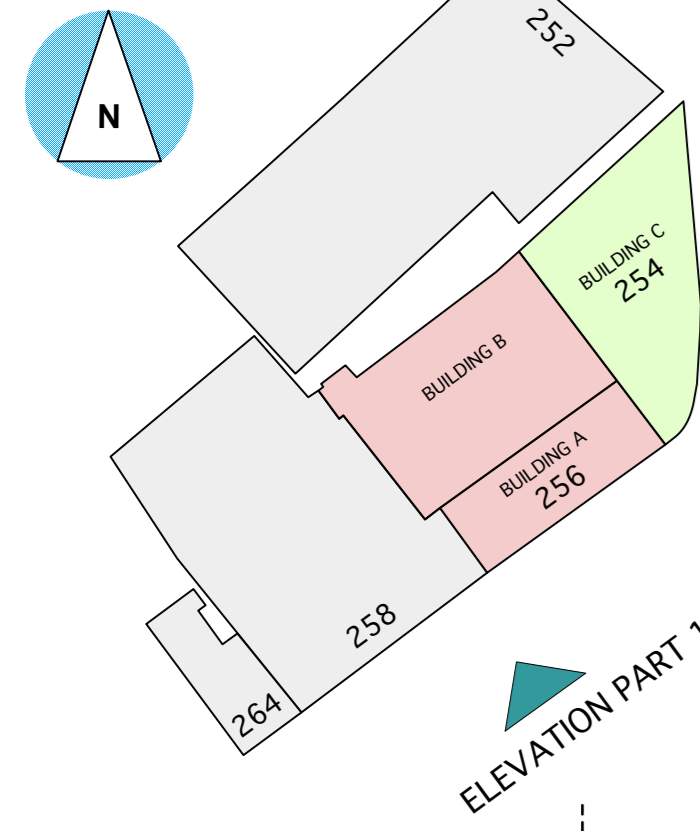


Key Plan



Key

To be demolished



ELEVATION PART 1
(SEE KEY PLAN)

264 BELSIZE ROAD 258 BELSIZE ROAD APPLICATION SITE 256 BELSIZE ROAD 254 BELSIZE ROAD

TO CONTINUE ON
ELEVATION PART 2
BELOW



ELEVATION PART 2
(SEE KEY PLAN)

254 BELSIZE ROAD APPLICATION SITE 252 BELSIZE ROAD



Rev C 22.07.25 Planning application Issue
Rev B 22.06.23 Draft Planning application
Rev A 22.05.10 Revised Elevations following Pre-App Meeting with Camden Planning Dept.

PLANNING APPLICATION

A1
1:100 @ A1
1:200 @ A3

 alan power (ARCHITECTS.) <small>Alan Power Architects Ltd 13 Newham Road London, W11 2BP Tel: 020 7229 9175 Fax: 020 7221 4172</small>	DRAWING South-East East Elevations as proposed	DRWG. N° 625 - 110
	PROJECT 254-256 BELSIZE RD LONDON NW6 4BT	Rev. C
	CLIENT EMPIRE COMMUNICATIONS LTD	Scale 1:100 @ A1 1:200 @ A3
	Date June 2022	Drawn

DO NOT SCALE FROM THIS DRAWING. ALL DIMENSIONS TO BE CHECKED ON SITE AND DISCREPANCIES REPORTED TO ARCHITECT