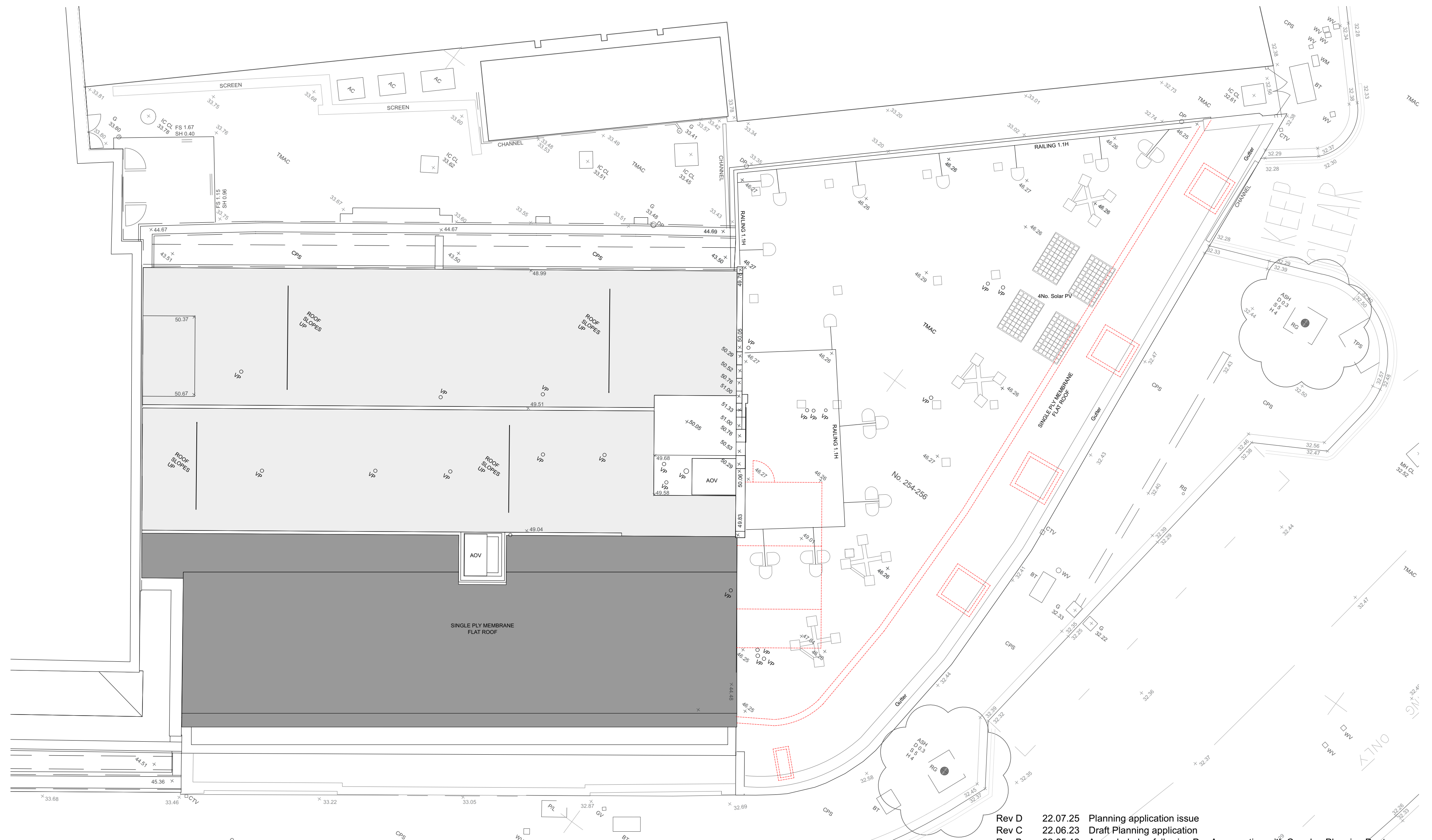


NOTE:  
Layout based on survey information

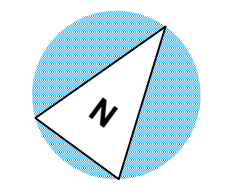


- Rev D 22.07.25 Planning application issue
- Rev C 22.06.23 Draft Planning application
- Rev B 22.05.12 Amended plan following Pre-App meeting with Camden Planning Dept.
- Rev A 22.02.18 Amended plan as per survey

**PLANNING APPLICATION**

**A2** 1:100 @ A2  
1:200 @ A4

Key  
 To be demolished



 <b>alan power</b>   (ARCHITECTS.) <small>Alan Power Architects Ltd 13 Needham Road London, W11 2RP Tel. 020 7229 9375 Fax. 020 7221 4172</small>	<b>DRAWING</b> Roof Plan as proposed	<b>DRWG. N°.</b> 625 - 107
	<b>PROJECT</b> 254-256 BELSIZE RD LONDON NW6 4BT	<b>Rev.</b> D <b>Scale</b> 1:100 @ A2 1:200 @ A4
	<b>CLIENT</b> EMPIRE COMMUNICATIONS LTD	<b>Date</b> July 2022
	<b>Drawn</b>	

DO NOT SCALE FROM THIS DRAWING. ALL DIMENSIONS TO BE CHECKED ON SITE AND DISCREPANCIES REPORTED TO ARCHITECT