

Section BB ← Section AA

Section BB ← Section AA

KEY ELECTRICAL SYSTEM :	
	LED Downlight
	LED Downlight emergency fitting IP54D/S-PIR
	LED Downlight with daylight sensor and timer
	LED Wall light with daylight sensor and timer
	Brick Led Downlight with daylight sensor and timer
	LED Strip ribbon (two denote top & bottom ribbons)
	Smoke detector/alarms
	Spur for AoV actuator with link to fire alarm system
	PIR - ceiling mounted
	Consumer Unit
	Aerial source in adaptable distribution box
	2-way switch
	1-way switch
	BT fiber connection
	Vent air-extract - indicative
	Main water supply pipes
	Electrical supply cables
	Telecoms
	Dry riser
	Satellite Socket
	Double Socket
	Double socket with USB connections
	Shaver point
	Control panel lighting and heating/cooling systems
	Code key access control -Handle
	Illuminated mirror
	Electrical Heated Towel Rail
	CCTV Camera
	CCTV Control
	Washer spur outlet
	Drier spur outlet

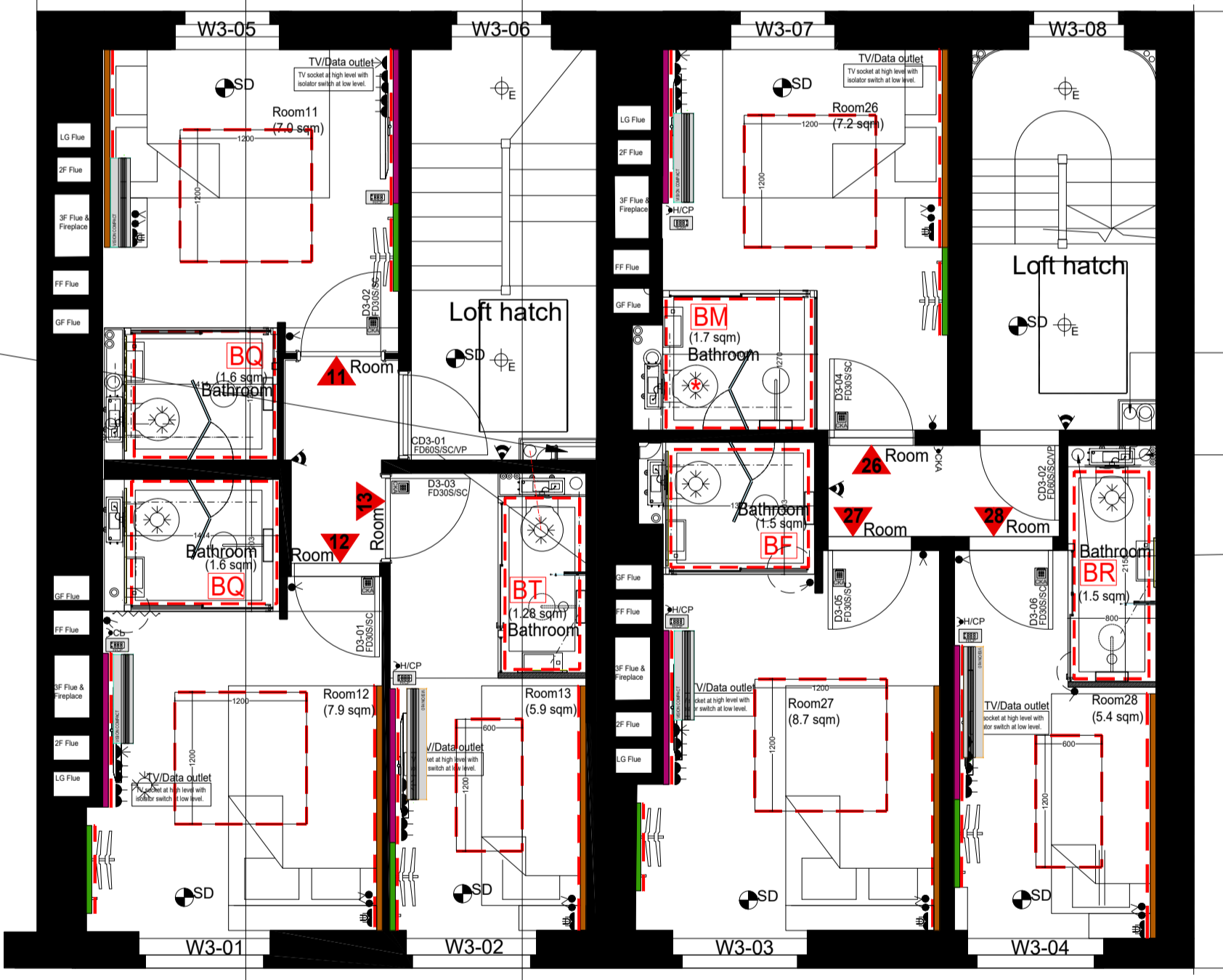
KEY SYSTEM :	
	VISION COMPACT 2.3 DW (air) HP and AC without external unit 810WX549HX165Dmm
	VISION H20 3.6 DW (water) HP and AC without external unit 1010WX549HX165Dmm
	ASHS external unit for HP and AC
	Electrical Buffer for DHW L (TBC)

Note:
The M&E contractor is to comply with all national building regulations and with the specification and requirements of the Services Engineer.
MEV system to be designed by others. What is shown is indicative ONLY.
Suspended ceiling to allow the location of the internal split unit.
Height of ceiling
H=(TBC) mm from FFL

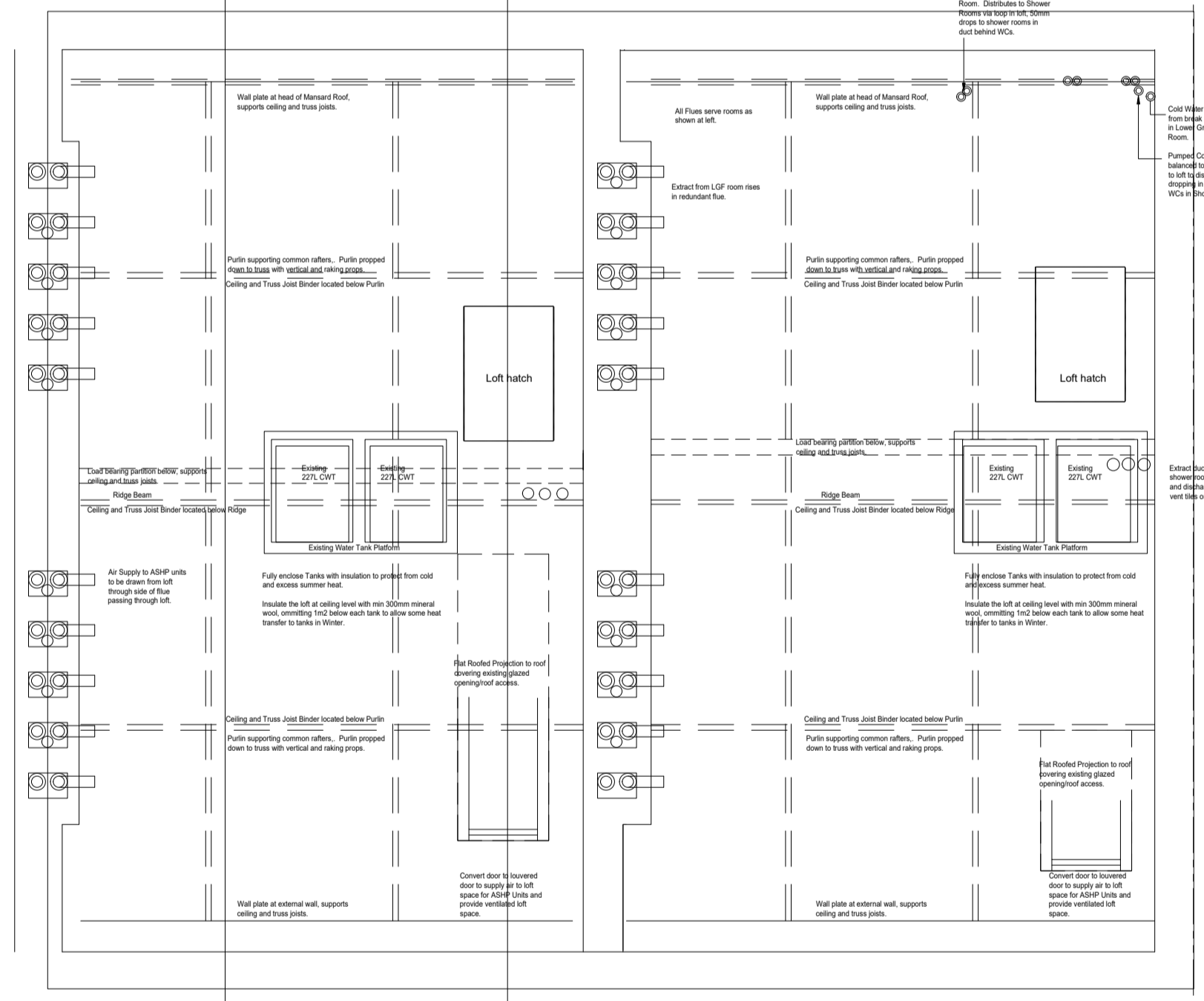
MDF perforated panel with LED lighting installed with a frame to the existing ceiling.
Panel size:
1200x1700 mm
1200x1200 mm
600x1200 mm

KEY FURNITURE :	
	TV and control wall panel
	Hanging cloths pre-assembled wall panel Type HC01 - HC02
	Hanging cloths pre-assembled wall panel Type HC03
	Double bedroom bedside pre-assembled wall panel Type 2B03
	Double bedroom bedside pre-assembled wall panel Type 2B01
	Double bedroom bedside pre-assembled wall panel Type 2B02
	Single bedroom bedside pre-assembled wall panel Type 1B01
	Single bedroom bedside pre-assembled wall panel Type 1B02

Please refer to the 2105/BC/D 101-106 for the furniture design drawings.



No. 32 Proposed Third Floor Plan



Loft plant room Loft plant room

No. 32 Proposed Loft Plan

Low level connections pass thro' wall to adjoining SVP to preserve cornice on floor below.

100mm flexible air duct from 1st Floor rises in duct beside waste pipe, dropping to below.

100mm air duct as above rises to loft from 3rd Floor.

100mm duct as above rises from 2nd Floor through 3rd Floor Cistern enclosure to loft.

GENERAL NOTES:
Copyright of this document (including its electronic form) and the designs described reside with PHD Associates. This document is protected under the COPYRIGHT, Designs & Patents Act 1988. Please do not scale from prints made from pdfs without verifying the scale using the scale bars or marked dimensions. Prints and Photocopies are distorted by the printing process. Dimensions are in millimetres.
Site checking
All dimensions and levels indicated must be site checked prior to commencement of works, and any discrepancies found must be reported.
Please consult with the architect in the event of an anomaly or conflicting information.
Please also refer to the structural engineer's details and specification for structural information and the services engineer's details and manufacture drawing

REV	BRIEF DETAILS	DATE	P.H.D. ASSOCIATES	Project	Date	
A	Initial Issue	29-06-22	P.H.D. ASSOCIATES SHARON HOUSE WATER LANE STANSTED, ESSEX CM24 8BJ TEL: 01279 812342 FAX: 01279 847066 EMAIL: INFO@PHDASSOCIATES.CO.UK	Oxford House Hostel Tavistock Place, London WC1H 9RE	30-08-2022	
B	Changed heating system room 16-17 and access control	21-07-22				Drawn by: SHD/VM
C	Amended bathroom design and added door numbering	30/08/22				Scale: 1-50at A1
				M&E Third and loft floor plans	Drawing Number: 2105/BC/ 603 C	